

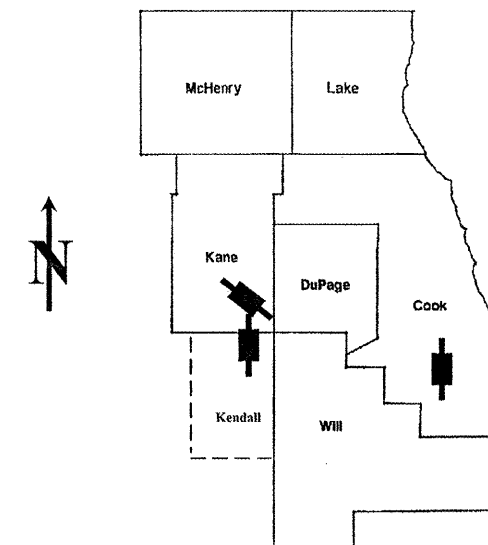
ROUTE	SECTION	COUNTY	TOTAL SHEETS	SHEET NUMBER
VARIOUS	2008-052 BP	VARIOUS	19+3=22	1

FOR INDEX OF SHEETS SEE SHEET 2

CONTRACT NO. 60F03

**STATE OF ILLINOIS**  
**DEPARTMENT OF TRANSPORTATION**  
**DIVISION OF HIGHWAYS**  
**DISTRICT ONE**  
**PROPOSED HIGHWAY PLANS**

D-91-565-08



LOCATION OF IMPROVEMENT INDICATED THUS:

IMPROVEMENTS ARE LOCATED IN THE VILLAGES OF BRIDGEVIEW AND MONTGOMERY

VARIOUS ROUTES  
 VARIOUS LOCATIONS  
 SECTION 2008-052 BP  
 BRIDGE PAINTING  
 VARIOUS COUNTIES  
 C-91-565-08

- 1) SN 047-0006: IL 31 OVER BNSF RR
- 2) SN 045-0039: US 30 OVER IL 31, BNSF RR & IL RAILNET RR
- 3) SN 016-1010: 95<sup>TH</sup> STREET RAMP TO SB. IL 43 OVER CSX RR & RICHARD ST.

**STATE OF ILLINOIS**  
**DEPARTMENT OF TRANSPORTATION**  
**DIVISION OF HIGHWAYS**

SUBMITTED: SEPTEMBER 3, 2008  
*Diana M. O'Keefe*  
 DEPUTY DIRECTOR OF HIGHWAYS, REGION ENGINEER

October 3, 2008  
*Eric E. Haran*  
 INTERIM ENGINEER OF DESIGN AND ENVIRONMENT

October 3, 2008  
*Christine M. Reed*  
 DIRECTOR OF HIGHWAYS, CHIEF ENGINEER

**PRINTED BY THE AUTHORITY**  
**OF THE STATE OF ILLINOIS**

J.U.L.I.E.: JOINT UTILITY LOCATION  
 INFORMATION FOR EXCAVATION  
 (800) 892-0123 OR 811

PROJECT ENGINEER ROBERT BORO (847) 705-4178  
 PROJECT MANAGER KEN ENG

CONTRACT NO. 60F03

ROUTE	SECTION	COUNTY	TOTAL SHEETS	SHEET NUMBER
VARIOUS	2008-052 BP	VARIOUS	19	2

CONTRACT 60F03

**INDEX OF SHEETS**

- 1 TITLE SHEET
- 2 INDEX OF SHEETS, STATE STANDARDS AND GENERAL NOTES
- 3 GENERAL PAINT NOTES
- 4 SUMMARY OF QUANTITIES
- 5 LOCATION MAPS
- 6-8A . EXISTING BRIDGE PLANS (SN 047-0006: LOCATION 1)
- 9-12A . EXISTING BRIDGE PLANS (SN 045-0039: LOCATION 2)
- 13-15A. EXISTING BRIDGE PLANS (SN 016-1010: LOCATION 3)
- 16 TRAFFIC STAGING PLAN (LOC 2: U.S. RTE 30 OVER IL 31 & BNSF RR)
- 17 TRAFFIC CONTROL FOR SHOULDER CLOSURES AND PARTIAL RAMP CLOSURES
- 18 TRAFFIC CONTROL AND PROTECTION FOR SIDE ROADS, INTERSECTIONS AND DRIVEWAYS
- 19 TRAFFIC CONTROL AND PROTECTION AND TURN BAYS (TO REMAIN OPEN TO TRAFFIC)

**STATE STANDARDS**

- 701101 - 01 MULTI-LANE OFF-ROAD OPERATIONS
- 701201 - 02 LANE CLOSURE 2L, 2W, DAY ONLY, FOR SPEEDS ≥45 MPH
- 701301 - 02 LANE CLOSURE 2L, 2W SHORT TIME OPERATIONS
- 701411 - 04 LANE CLOSURE, MULTILANE, AT ENTRANCE OR EXIT RAMP, FOR SPEEDS ≥45 MPH
- 701601 - 05 URBAN LANE CLOSURE, MULTILANE, 1W OR 2W WITH NONTRAVERSABLE MEDIAN
- 701606 - 05 URBAN LANE CLOSURE, MULTILANE, 2W WITH MOUNTABLE MEDIAN
- 701901 TRAFFIC CONTROL DEVICES

**GENERAL NOTES**

BEFORE STARTING ANY EXCAVATION, THE CONTRACTOR SHALL CALL "J.U.L.I.E." AT (800) 892-0123 OR 811. FOR FIELD LOCATIONS OF BURIED ELECTRIC, TELEPHONE AND GAS UTILITIES. 48 HOUR NOTIFICATION IS REQUIRED.

THE CONTRACTOR SHALL COORDINATE CONSTRUCTION ACTIVITIES WITH UTILITY COMPANIES, VILLAGES OF BRIDGEVIEW AND MONTGOMERY.

IT SHALL BE THE CONTRACTOR'S RESPONSIBILITY TO VERIFY ALL DIMENSIONS & CONDITIONS EXISTING IN THE FIELD PRIOR TO CONSTRUCTION & ORDERING OF MATERIALS.

THE CONTRACTOR WILL NOT BE ALLOWED TO SET UP A YARD OR FIELD OFFICE ON STATE PROPERTY WITHOUT WRITTEN PERMISSION FROM THE DEPARTMENT.

THE CONTRACTOR SHALL CONTACT THE DISTRICT ONE TRAFFIC CONTROL SUPERVISOR AT (847) 705-4470 A MINIMUM OF 72 HOURS IN ADVANCE OF BEGINNING WORK.

IT SHALL BE THE CONTRACTORS RESPONSIBILITY TO PROTECT AND MAINTAIN THE EXISTING BRIDGE LIGHTING AT ALL LOCATIONS.

THE CONTRACTOR SHALL BE REQUIRED TO PROVIDE ACCESS TO ABUTTING PROPERTY AT ALL TIMES DURING THE CONSTRUCTION OF THIS PROJECT.

DO NOT SCALE PLANS FOR CONSTRUCTION DIMENSIONS.

ILLINOIS DEPARTMENT OF TRANSPORTATION

INDEX OF SHEETS  
STATE STANDARDS  
GENERAL NOTES

ROUTE	SECTION	COUNTY	TOTAL SHEETS	SHEET NUMBER
VARIOUS	2008-052 BP	VARIOUS	19	3

CONTRACT 60F03

### GENERAL NOTES FOR PAINT

CLEANING AND PAINTING OF THE EXISTING STRUCTURAL STEEL SHALL BE AS SPECIFIED IN THE SPECIAL PROVISION FOR "CLEANING AND PAINTING EXISTING STEEL STRUCTURES".

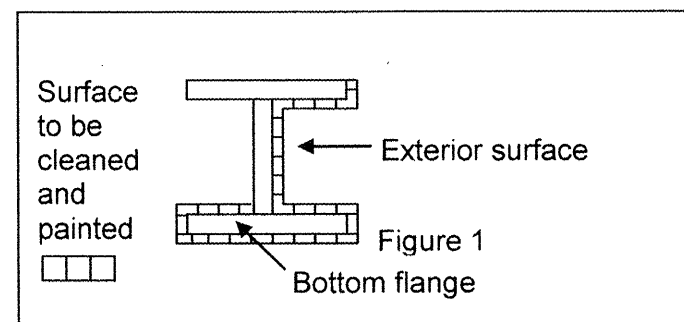
THE AREAS DESIGNATED TO BE CLEANED PER NEAR WHITE BLAST CLEANING SSPC-SP10 SHALL BE PAINTED ACCORDING TO THE REQUIREMENTS OF PAINT SYSTEM 1 - OZ/E/U. THE COLOR OF THE FINAL FINISH COAT FOR INTERIOR STEEL SURFACES SHALL BE GRAY, MUNSELL NO 5B 7/1. THE COLOR OF THE FINAL FINISH COAT FOR THE EXTERIOR AND BOTTOM FLANGE OF THE FASCIA BEAMS SHALL BE REDDISH BROWN, MUNSELL NO 2.5YR 3/4.

ALL ITEMS (SUCH AS, BUT NOT LIMITED TO; CONDUITS, BRACKETS AND DECK DRAINS) ATTACHED TO THE OUTSIDE OF THE FASCIA BEAMS SHOULD BE CLEANED AND PAINTED.

A MINIMUM OF FOUR (AT LOCATIONS 1 [SN 047-0006] AND 2 [SN 045-0039]) AND TWO (AT LOCATION 3 [SN 016-1010]) AIR MONITORS WILL BE REQUIRED TO MONITOR ABRASIVE BLASTING OPERATIONS PER LOCATION, SEE SPECIAL PROVISIONS FOR "CONTAINMENT AND DISPOSAL OF LEAD PAINT CLEANING RESIDUE".

ALL BEAMS, BEARINGS AND OTHER STRUCTURAL STEEL WITHIN FIVE (5) FT., (MEASURED ALONG THE BEAM) OF EITHER SIDE OF THE DECK JOINTS, SHALL BE CLEANED PER NEAR WHITE BLAST CLEANING SSPC-SP10. THE EXTERIOR SURFACES AND TOP AND BOTTOM OF THE BOTTOM FLANGE OF THE FASCIA BEAMS (SEE FIGURE 1) SHALL BE CLEANED PER NEAR WHITE BLAST CLEANING SSPC-SP10.

*NOTE: THE SSPC-QP1 AND QP2 PAINTING CONTRACTOR CERTIFICATIONS WILL BE REQUIRED FOR THIS CONTRACT.*



ILLINOIS DEPARTMENT OF TRANSPORTATION

GENERAL PAINT NOTES

Rev.

ROUTE	SECTION	COUNTY	TOTAL SHEETS	SHEET NUMBER
VARIOUS	2008-052 BP	VARIOUS	19	4

CONTRACT: 60F03

SUMMARY OF QUANTITIES

Code No.	Description	Unit	URBAN 100% STATE Total Quantities	CONSTRUCTION TYPE CODE: SFTY - 2A		
				LOCATION 1 SN 047-0006	LOCATION 2 SN 045-0039	LOCATION 3 SN 016-1010
50600600	CLEANING AND PAINTING STEEL BRIDGE NO. 1	L SUM	1	1		
50600700	CLEANING AND PAINTING STEEL BRIDGE NO. 2	L SUM	1		1	
50600800	CLEANING AND PAINTING STEEL BRIDGE NO. 3	L SUM	1			1
50606400	CONTAINMENT AND DISPOSAL OF LEAD PAINT CLEANING RESIDUES	L SUM	1	0.3	0.4	0.3
67000400	ENGINEER'S FIELD OFFICE, TYPE A	CAL MO	9	3	3	3
67100100	MOBILIZATION	L SUM	1	0.3	0.4	0.3
70100450	TRAFFIC CONTROL <sup>AND</sup> PROTECTION, STANDARD 701201	L SUM	1			1
70101800	TRAFFIC CONTROL <sup>AND</sup> PROTECTION, (SPECIAL)	L SUM	1		1	
70102625	TRAFFIC CONTROL <sup>AND</sup> PROTECTION, STANDARD 701606	L SUM	1	1		
X0322467	TEMPORARY INFORMATION SIGNING FOR LANE CLOSURE	SQ FT	216	48	96	72
Z0048665	RAILROAD PROTECTIVE LIABILITY INSURANCE	L SUM	1	0.3	0.4	0.3

ILLINOIS DEPARTMENT OF TRANSPORTATION  
SUMMARY OF QUANTITIES

ROUTE	SECTION	COUNTY	TOTAL SHEETS	SHEET NUMBER
VARIOUS	2008-052 BP	VARIOUS	19	5

IMPROVEMENTS ARE LOCATED IN THE VILLAGE OF MONTGOMERY

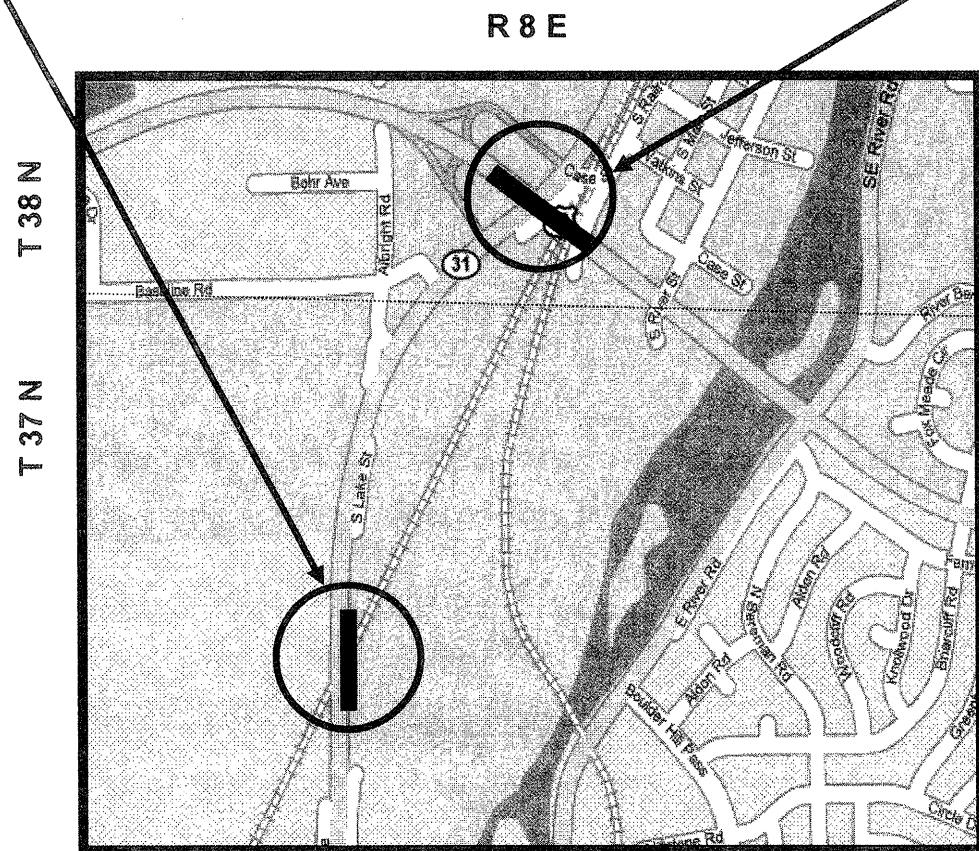
Contract 60F03

LOCATION 2 : US 30 OVER IL 31, BNSF RR & IL RAILNET RR (SN 045-0039)

IMPROVEMENT IS LOCATED IN THE CITY OF BRIDGEVIEW

LOCATION 1 : IL 31 OVER BNSF RR (SN 047-0006)

LOCATION 3 : 95TH STREET RAMP TO SB IL 43 OVER CSX RAILROAD & RICHARD ST (SN 016-1010)

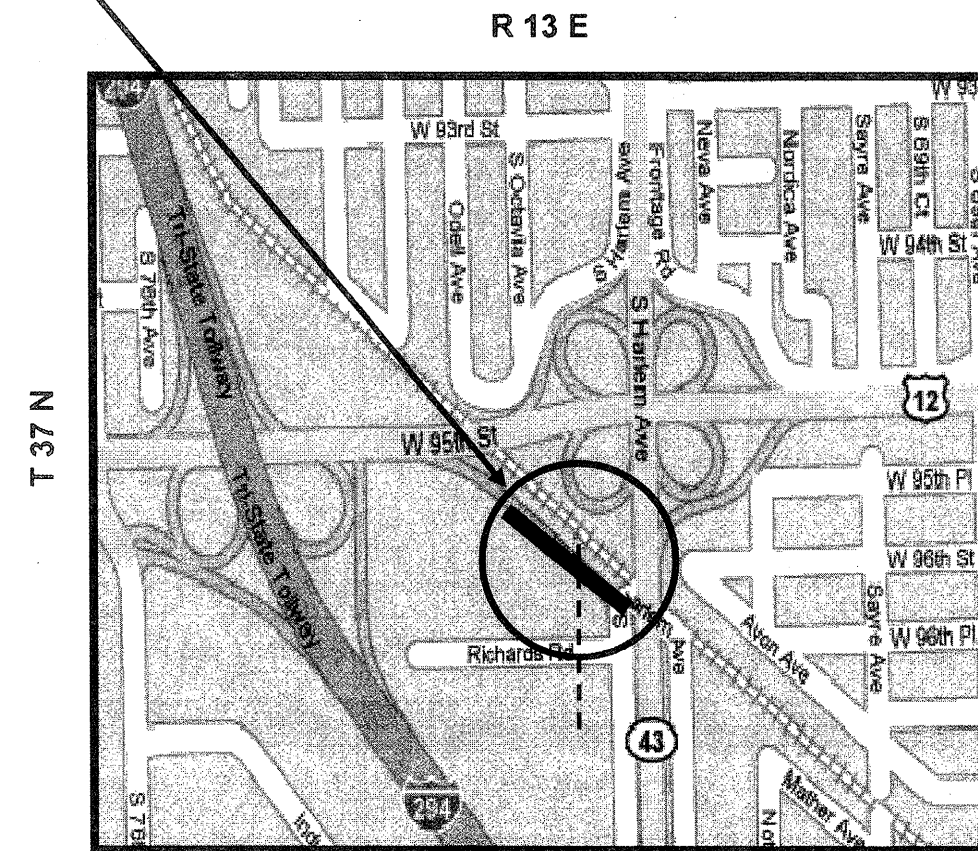


AURORA & OSWEGO TOWNSHIPS  
KANE AND KENDAL COUNTIES

**TRAFFIC DATA:**

IL 31: SPEED LIMIT = 45 MPH  
2007 ADT = 18,400

US 30: SPEED LIMIT = 45 MPH  
2007 ADT = 23,000



WORTH TOWNSHIP  
COOK COUNTY

**TRAFFIC DATA:**

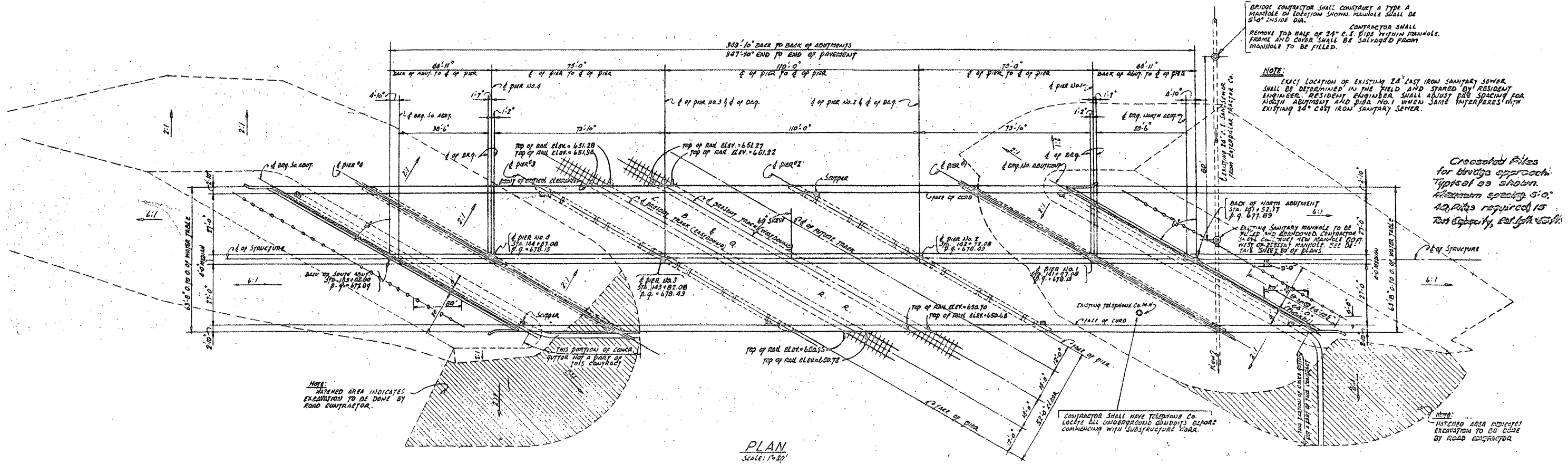
95<sup>TH</sup> STREET RAMP: SPEED LIMIT = 40 MPH  
2007 ADT = 21,300

ILLINOIS DEPARTMENT OF TRANSPORTATION

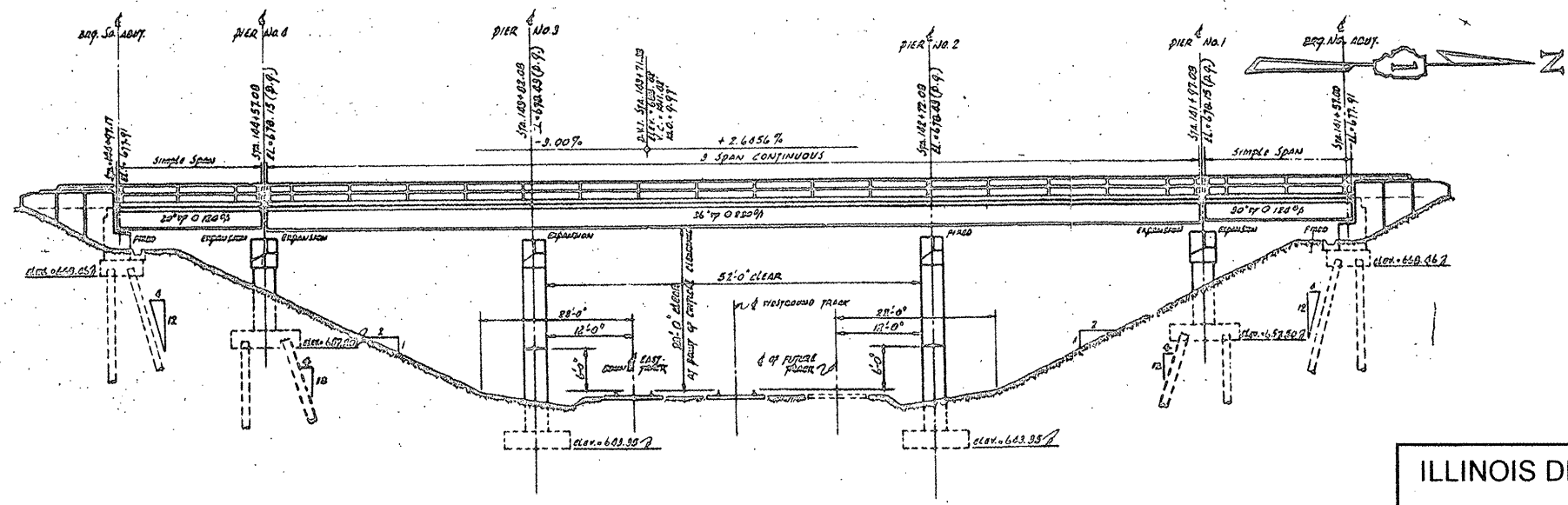
LOCATION MAPS

ROUTE VARIOUS	SECTION 2008-052 BP	COUNTY VARIOUS	TOTAL SHEETS 19	SHEET NUMBER 6
------------------	------------------------	-------------------	--------------------	-------------------

CONTRACT 60F03



PLAN  
Scale: 1"=20'



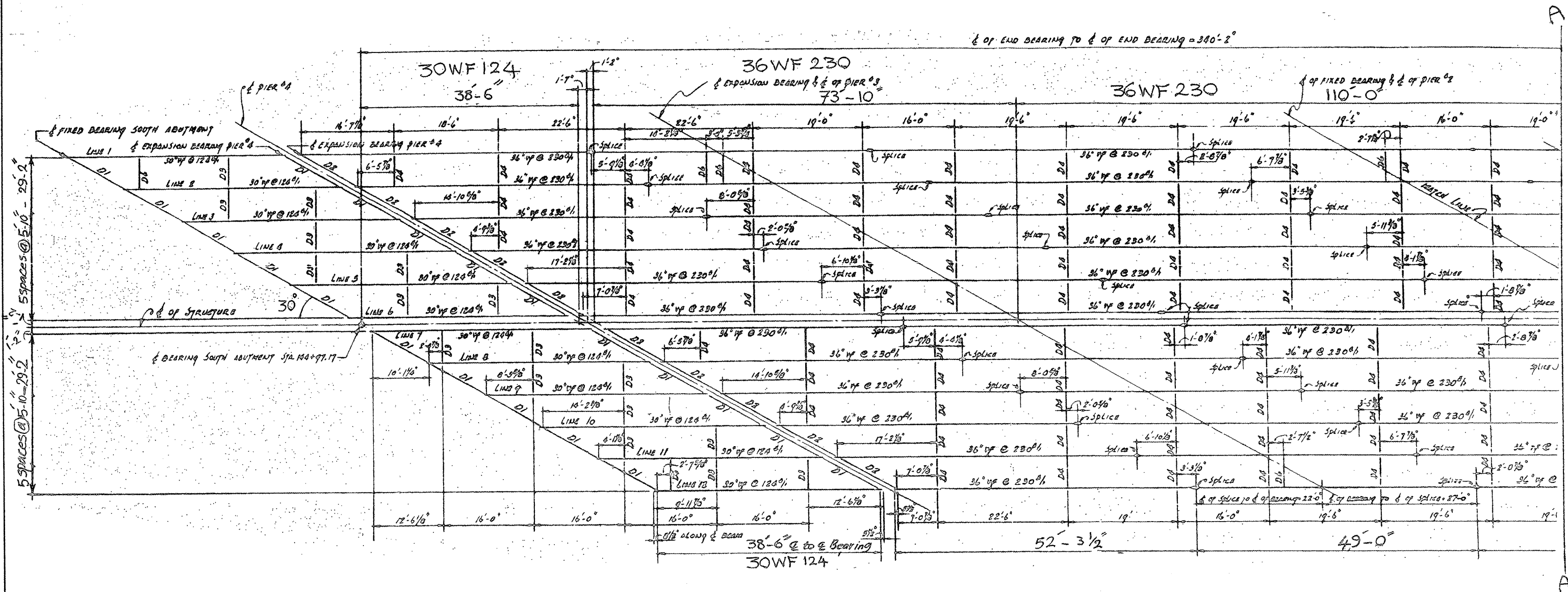
ELEVATION - RIGHT ANGLE TO SUBSTRUCTURE

FOR  
INFORMATION  
ONLY

ILLINOIS DEPARTMENT OF TRANSPORTATION  
EXISTING BRIDGE PLAN  
LOCATION 1, SN 047-0006

ROUTE	SECTION	COUNTY	TOTAL SHEETS	SHEET NUMBER
VARIOUS	2008-052 BP	VARIOUS	19	7

CONTRACT 60F03



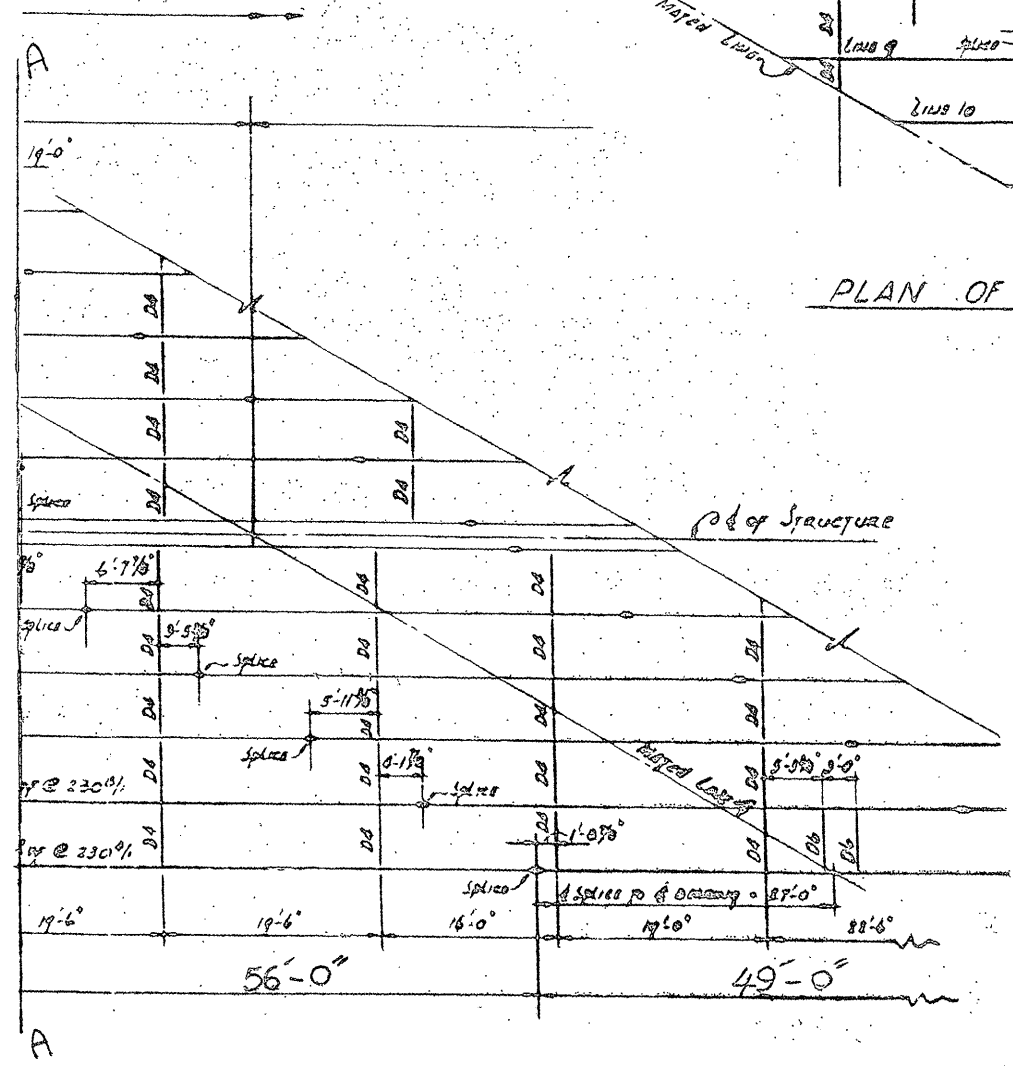
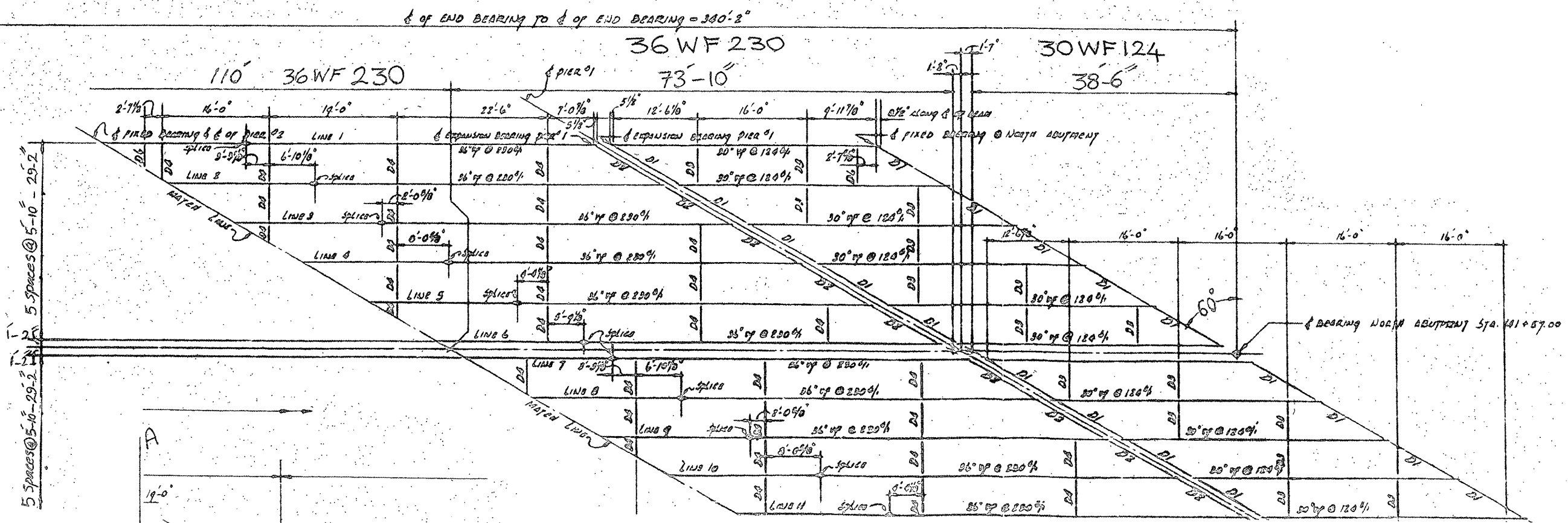
PLAN OF STRUCTURAL STEEL  
SCALE: 3/32" = 1'-0"

FOR  
INFORMATION  
ONLY

ILLINOIS DEPARTMENT OF TRANSPORTATION  
EXISTING BRIDGE PLAN  
LOCATION 1, SN 047-0006  
SHEET 2 OF 3

ROUTE	SECTION	COUNTY	TOTAL SHEETS	SHEET NUMBER
VARIOUS	2008-052 BP	VARIOUS	19	8

CONTRACT 60F03



PLAN OF STRUCTURAL STEEL  
Scale: 3/32" = 1'-0"

D<sub>1</sub> = 12 WF 45  
D<sub>2</sub> = 16 WF 50

FOR  
INFORMATION  
ONLY

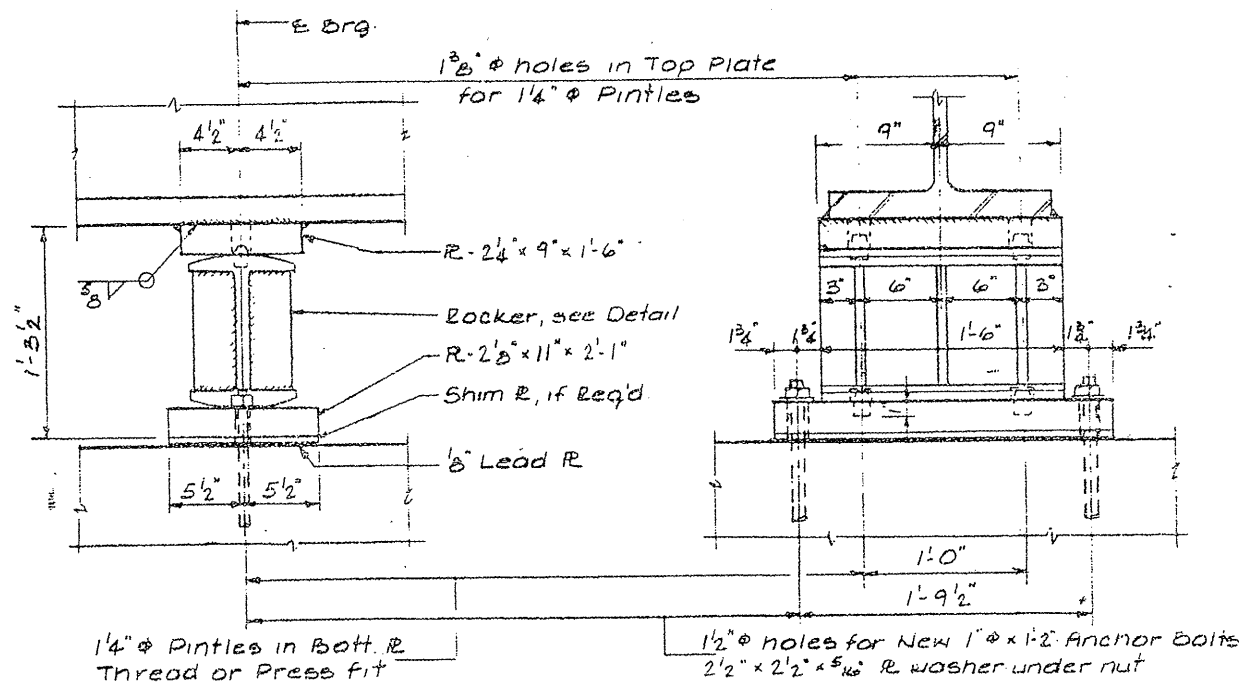
ILLINOIS DEPARTMENT OF TRANSPORTATION

EXISTING BRIDGE PLAN  
LOCATION 1, SN 047-0006

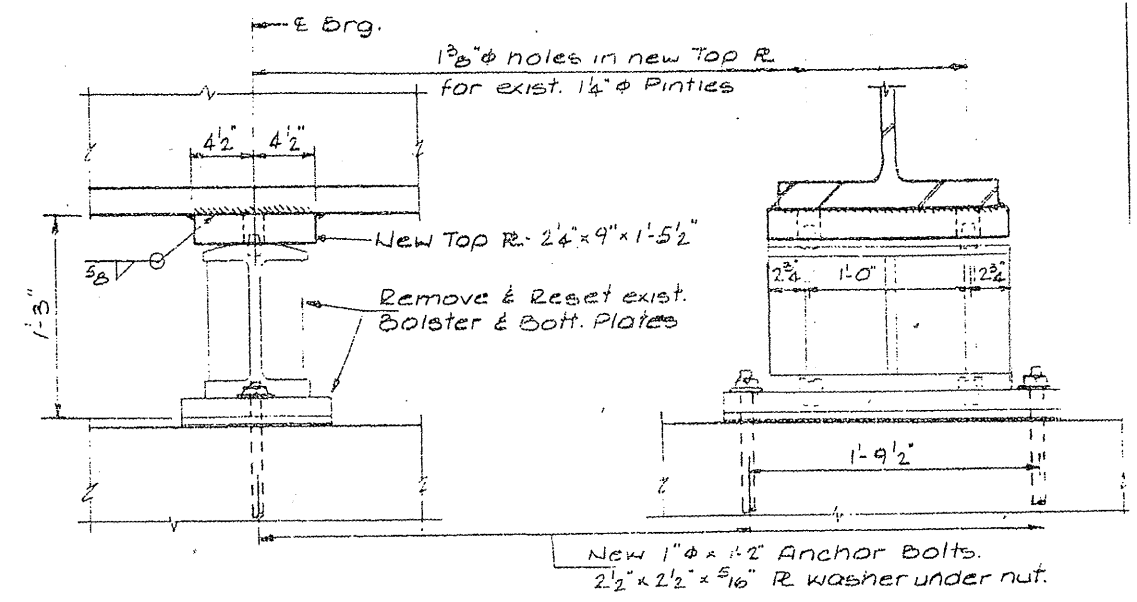


ROUTE VARIOUS	SECTION 2008-052 BP	COUNTY VARIOUS	TOTAL SHEETS 19	SHEET NUMBER 8A
------------------	------------------------	-------------------	--------------------	--------------------

CONTRACT 60F03

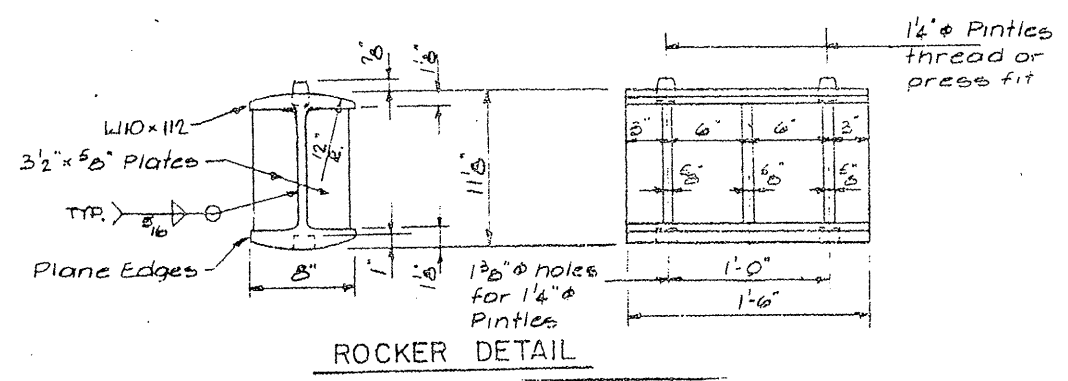


BEARING - PIER 3 - BEAMS 1 & 12



BEARING - PIER 2 - BEAMS 1 & 12

Note: For Beams 1 & 12, 30WF124 at Piers 1 & 4: When Pier cap cantilever removed clean & salvage existing bearings for reuse. Provide new 1" x 1 1/2" Anchor bolts with nuts & washers. Provide temporary support for beams. Cost incidental to Structural steel.



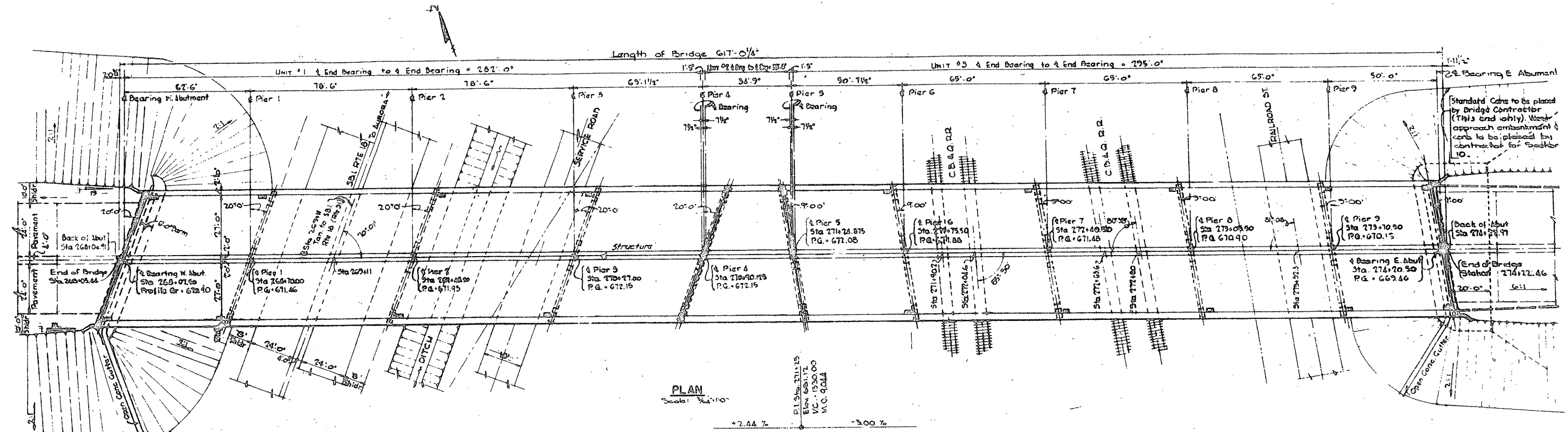
ROCKER DETAIL

FOR INFORMATION ONLY

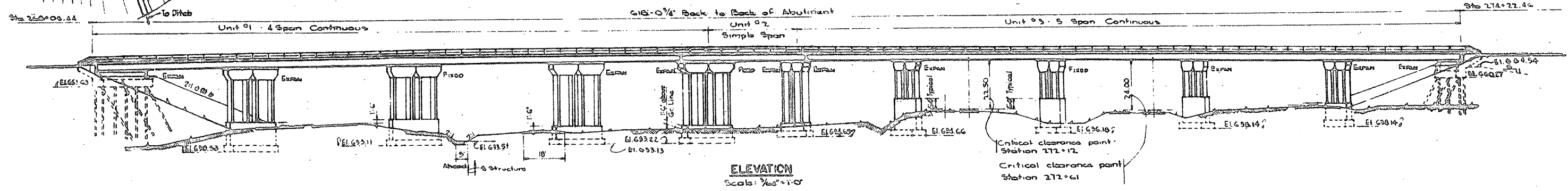
ILLINOIS DEPARTMENT OF TRANSPORTATION  
EXISTING BRIDGE PLAN  
LOCATION 1, SN 047-0006

ROUTE	SECTION	COUNTY	TOTAL SHEETS	SHEET NUMBER
VARIOUS	2008-052 BP	VARIOUS	19	9

CONTRACT 60F03



PLAN  
Scale: 1/4" = 1'-0"



ELEVATION  
Scale: 1/4" = 1'-0"

**FOR  
INFORMATION  
ONLY**

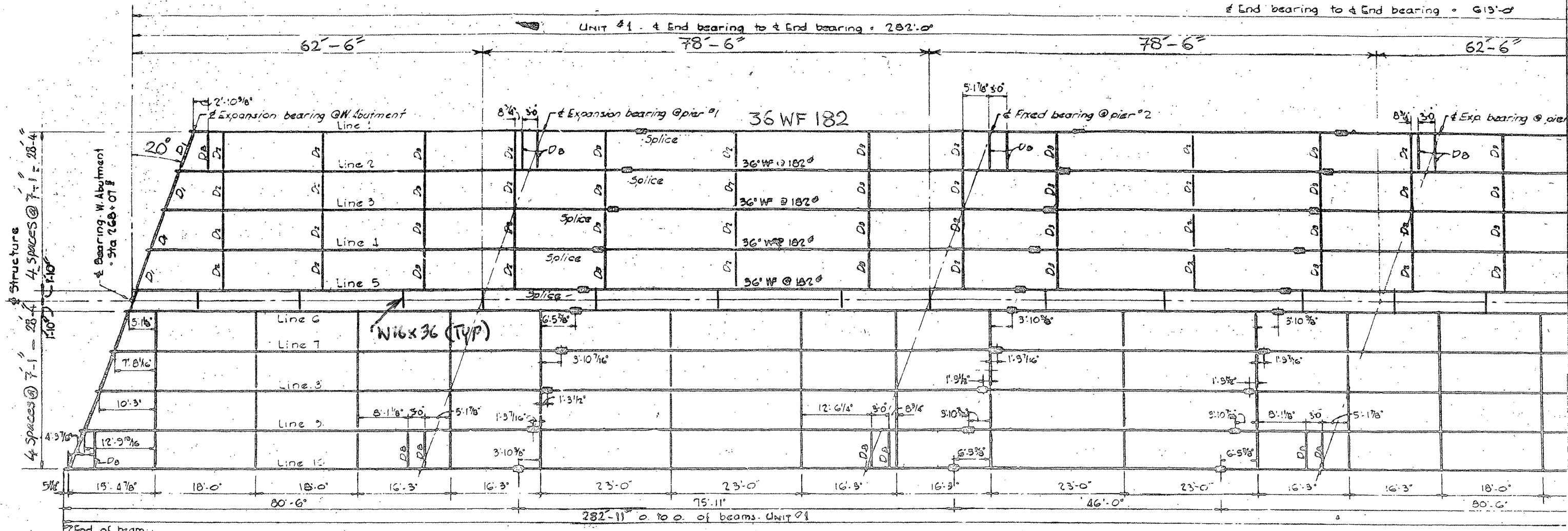
ILLINOIS DEPARTMENT OF TRANSPORTATION

EXISTING BRIDGE PLAN  
LOCATION 2, SN 045-0039

ROUTE	SECTION	COUNTY	TOTAL SHEETS	SHEET NUMBER
VARIOUS	2008-052 BP	VARIOUS	19	10

CONTRACT 60F03

A



PLAN-STRUCTURAL STEEL, UNIT #1 & UNIT #2

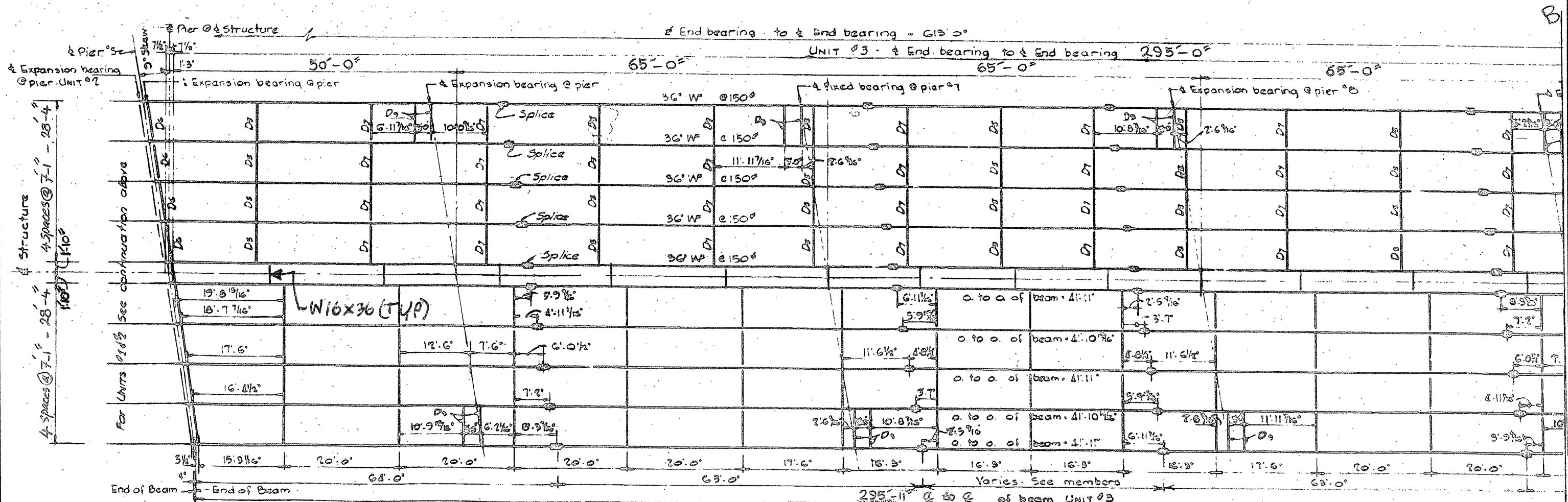
For A-A see sheet 4 of 4

**FOR  
INFORMATION  
ONLY**

ILLINOIS DEPARTMENT OF TRANSPORTATION  
  
EXISTING BRIDGE PLAN  
LOCATION 2, SN 045-0039

ROUTE	SECTION	COUNTY	TOTAL SHEETS	SHEET NUMBER
VARIOUS	2008-052 BP	VARIOUS	19	11

CONTRACT 60F03



PLAN - STRUCTURAL STEEL, UNIT #3

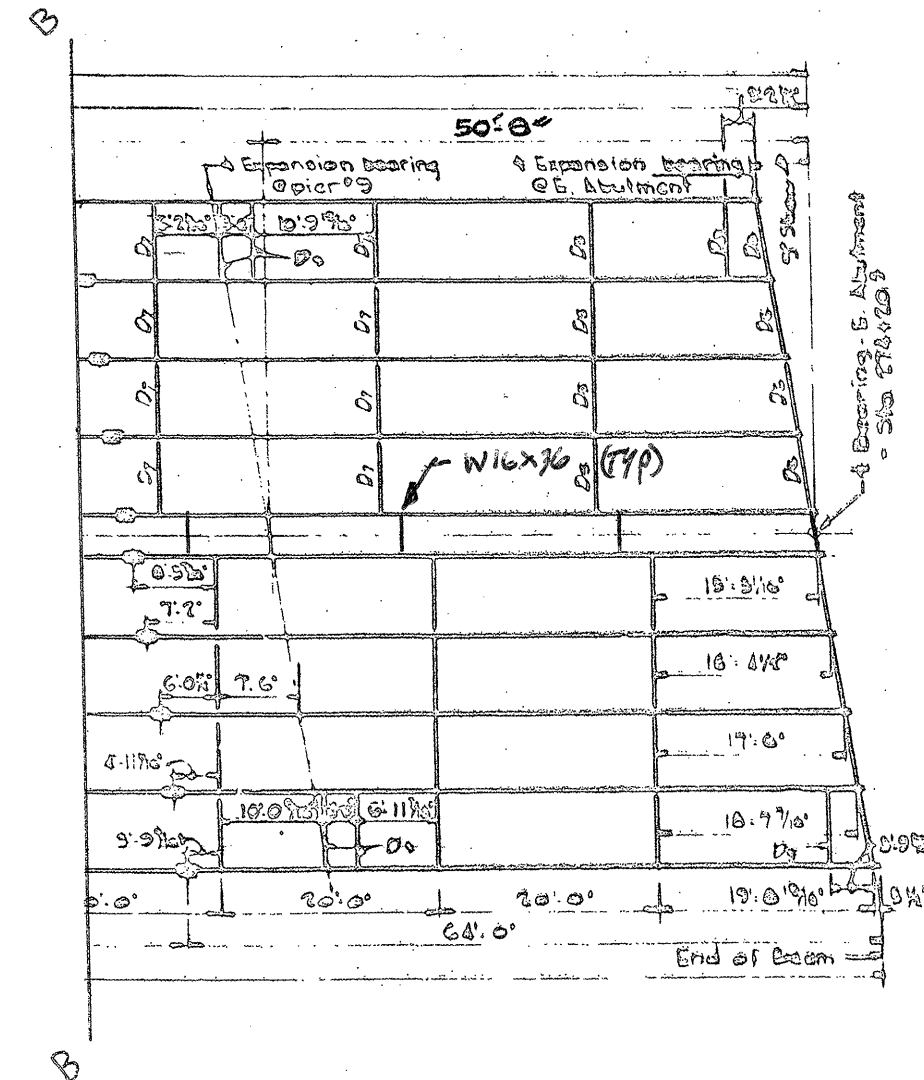
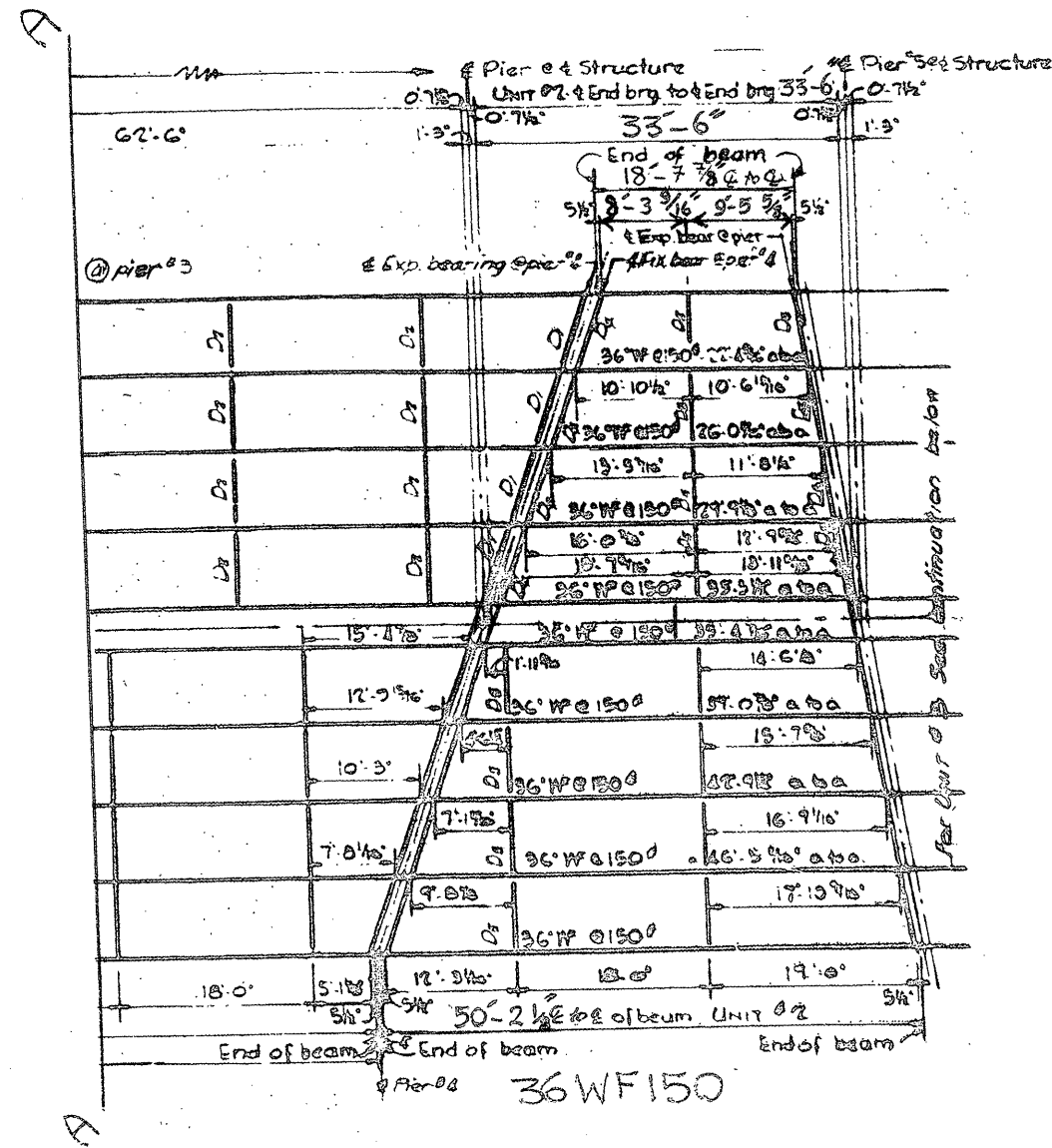
For B-B See Sheet 4 of 4

**FOR INFORMATION ONLY**

ILLINOIS DEPARTMENT OF TRANSPORTATION  
 EXISTING BRIDGE PLAN  
 LOCATION 2, SN 045-0039

ROUTE	SECTION	COUNTY	TOTAL SHEETS	SHEET NUMBER
VARIOUS	2008-052 BP	VARIOUS	19	12

CONTRACT 60F03



PLAN - STRUCTURAL STEEL, UNIT #1 & UNIT #2

PLAN - STRUCTURAL STEEL, UNIT #3

**FOR  
INFORMATION  
ONLY**

D<sub>1</sub> = 18 WF 50

D<sub>2</sub> = 36 WF 182

D<sub>3</sub> = 36 WF 182

D<sub>4</sub> = 18 WF 50

D<sub>5</sub> = 36 WF 50

D<sub>6</sub> = 18 WF 50

D<sub>7</sub> = 36 WF 182

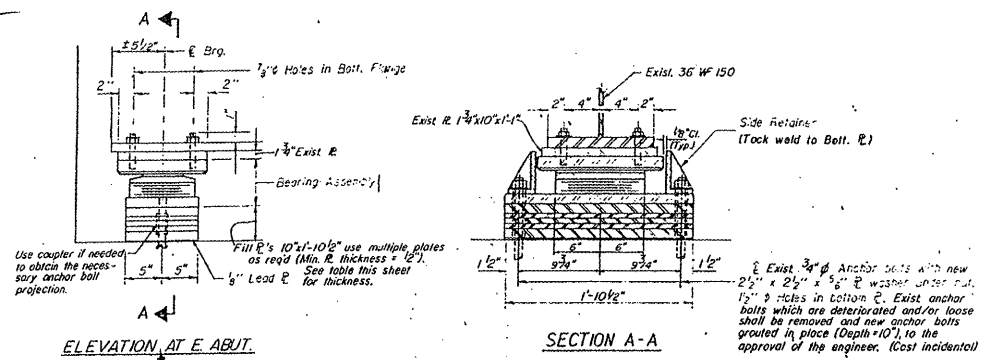
ILLINOIS DEPARTMENT OF TRANSPORTATION

EXISTING BRIDGE PLAN  
LOCATION 2, SN 045-0039

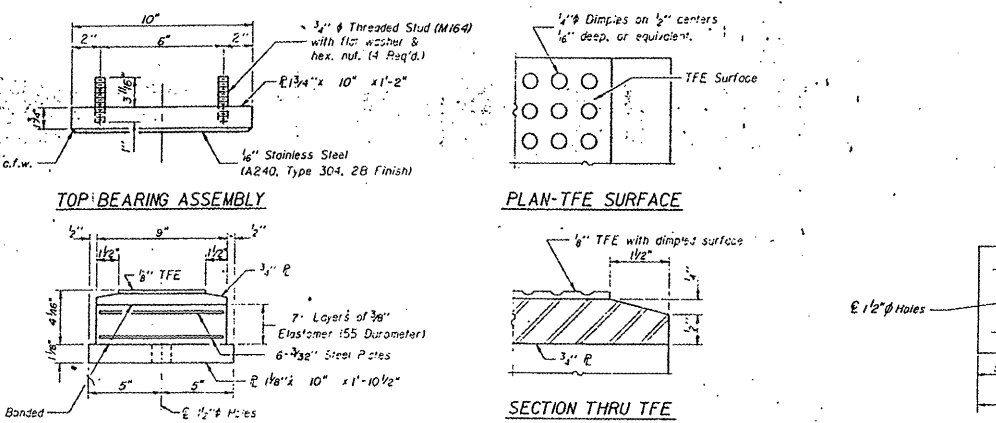
SHEET 4 OF 4

ROUTE VARIOUS	SECTION 2008-052 BP	COUNTY VARIOUS	TOTAL SHEETS 19	SHEET NUMBER 12A
------------------	------------------------	-------------------	--------------------	---------------------

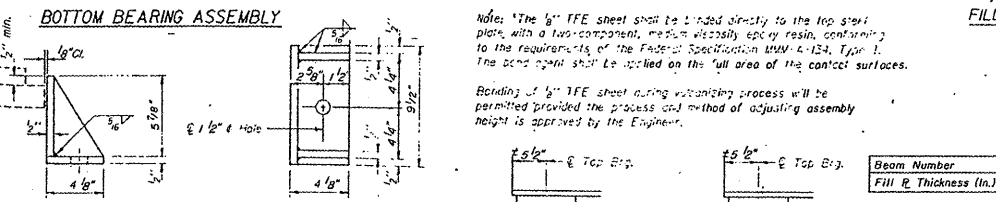
CONTRACT 60F03



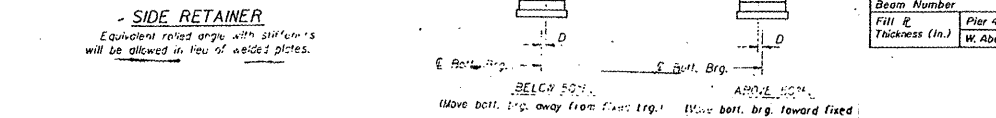
ELEVATION AT E. ABUT.  
ELEVATION AT W. ABUT. & PIER 4 ELASTOMERIC EXP. BRG.



TOP BEARING ASSEMBLY  
PLAN-TFE SURFACE  
SECTION THRU TFE



BOTTOM BEARING ASSEMBLY  
FILL R DETAIL PLAN

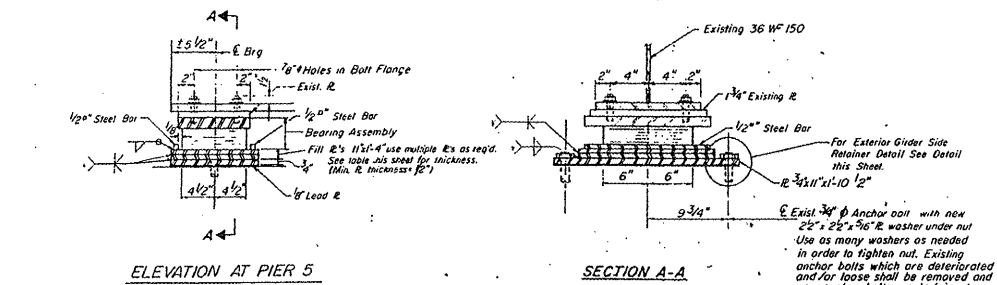


SIDE RETAINER  
SETTING ANCHOR BOLTS AT EXP. BRG.

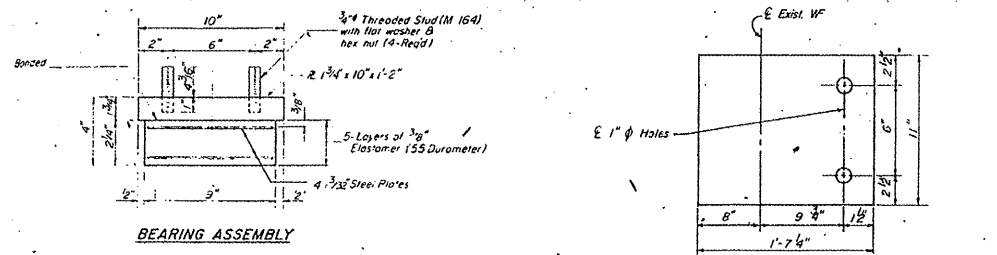
Beam Number	1	2	3	4	5	6	7	8	9	10
Fill R Thickness (in.)	1 3/16	1 3/16	1 3/16	2 3/16	2 3/8	2 3/4	1 9/16	1 3/8	1 1/2	1 9/16

Beam Number	1	2	3	4	5	6	7	8	9	10
Fill R Thickness (in.)	1 1/16	2 3/8	3 1/2	1 1/16	3	3	2 1/16	3 3/8	2 3/8	2 3/8

Beam Number	1	2	3	4	5	6	7	8	9	10
Fill R Thickness (in.)	2 3/16	2 3/8	3 3/8	1 1/16	2 3/8	2 7/8	1 1/16	3 3/4	2 3/8	1 1/16

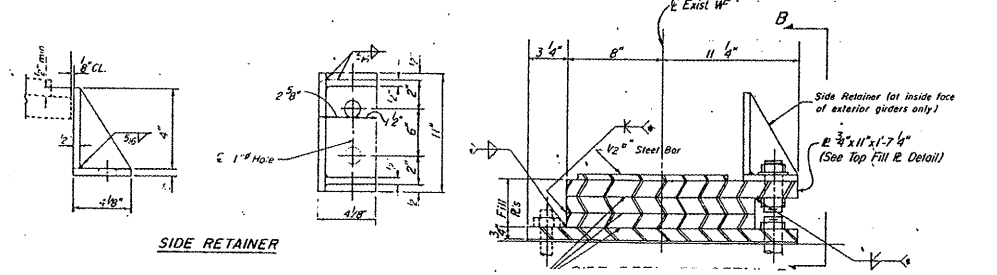


ELEVATION AT PIER 5  
UNIT 2  
UNIT 3  
TYPE I ELASTOMERIC EXP. BRG.



BEARING ASSEMBLY

TOP FILL R DETAIL FOR EXTERIOR GIRDERS ONLY



SIDE RETAINER

Beam Number	1	2	3	4	5	6	7	8	9	10
Fill R Thickness (in.)	3 3/4	4 3/8	4 3/8	3 3/8	4 3/8	4 3/8	3 3/4	4 1/8	4	3 3/8

Beam Number	1	2	3	4	5	6	7	8	9	10
Fill R Thickness (in.)	2 3/16	2 3/8	3 3/8	1 1/16	2 3/8	2 7/8	1 1/16	3 3/4	2 3/8	1 1/16

Note: These are theoretical dimensions. Actual field dimensions may vary and should be checked in the field prior to ordering fill R's.

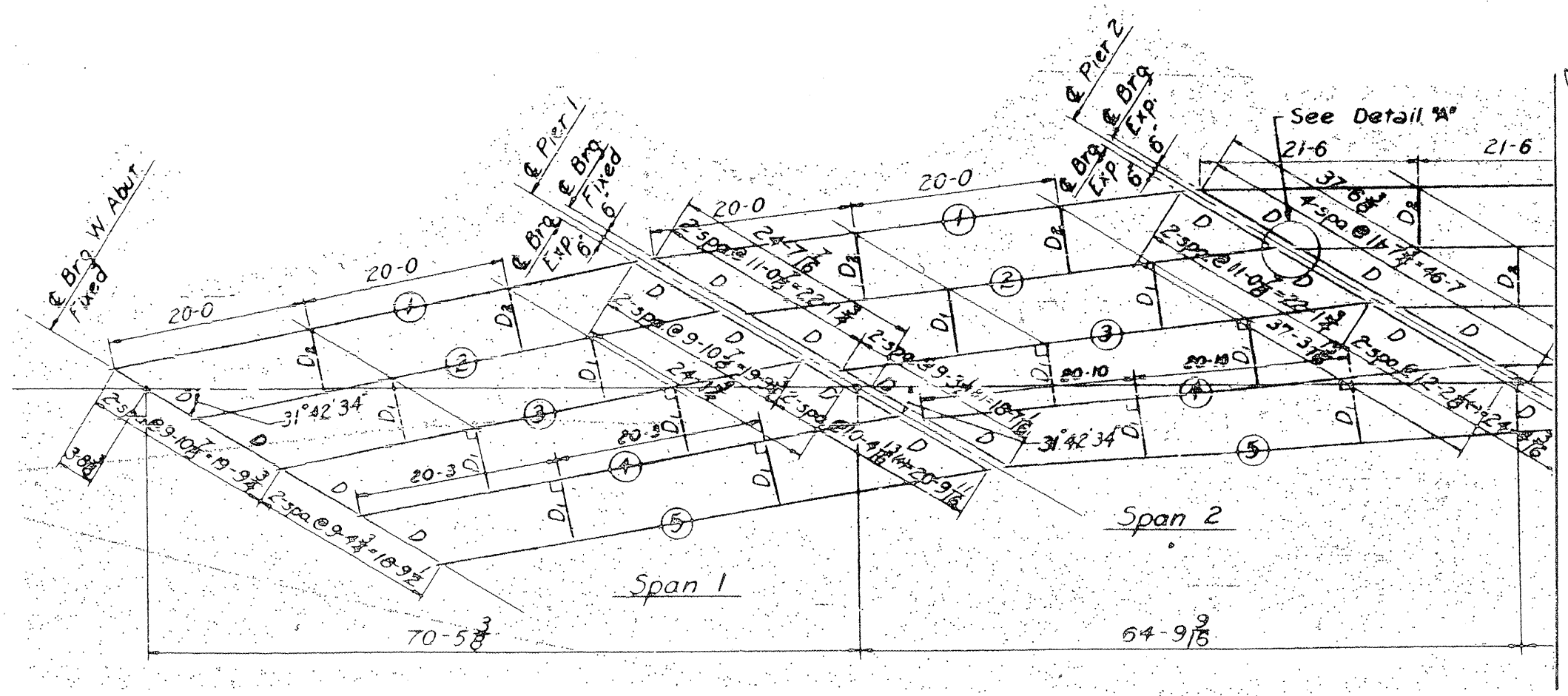
FOR INFORMATION ONLY

ILLINOIS DEPARTMENT OF TRANSPORTATION  
EXISTING BRIDGE PLAN  
LOCATION 2, SN 045-0039

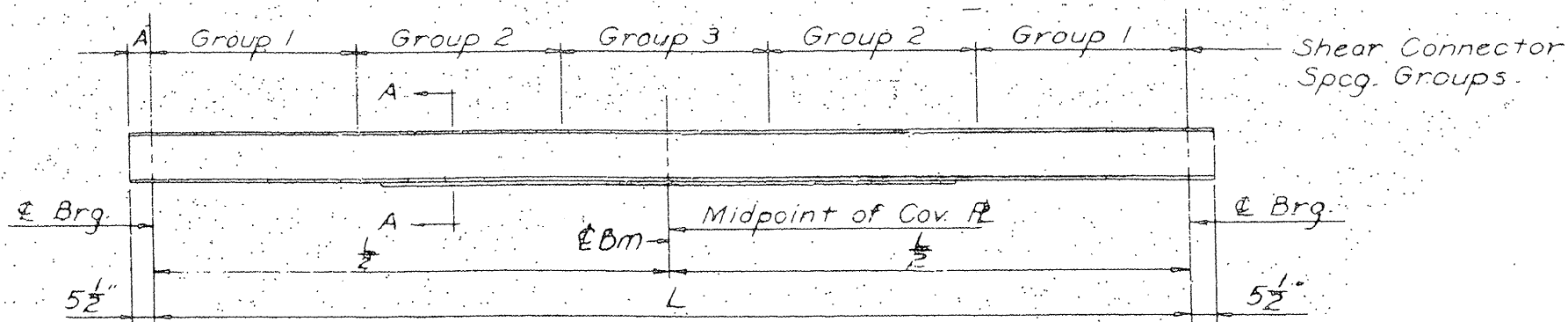


ROUTE	SECTION	COUNTY	TOTAL SHEETS	SHEET NUMBER
VARIOUS	2008-052 BP	VARIOUS	19	14

CONTRACT 60F03



FRAMING PLAN



BEAM ELEVATION

**FOR  
INFORMATION  
ONLY**

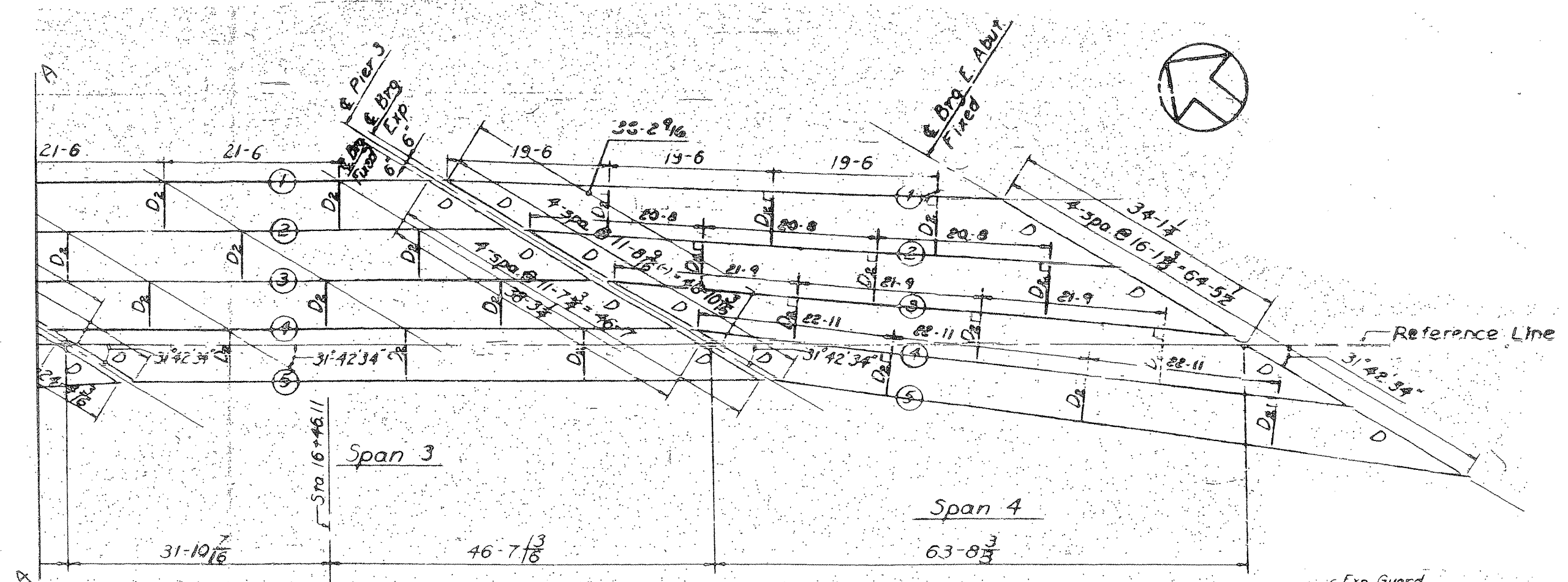
ILLINOIS DEPARTMENT OF TRANSPORTATION

EXISTING BRIDGE PLAN  
LOCATION 3, SN 016-1010



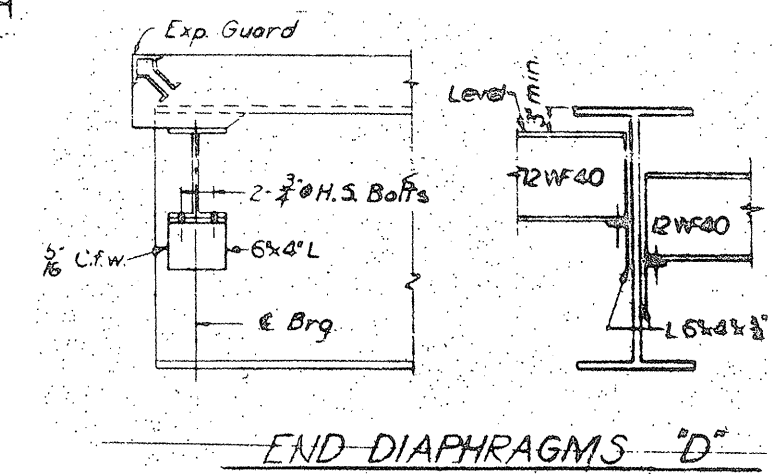
ROUTE VARIOUS	SECTION 2008-052 BP	COUNTY VARIOUS	TOTAL SHEETS 19	SHEET NUMBER 15
------------------	------------------------	-------------------	--------------------	--------------------

CONTRACT 60F03



FRAMING PLAN

	Bcom	WF Section	L
SPAN 1	①	36WF150	53-2 3/8
	②③	30WF116	53-2 3/8
	④	30WF116	53-11 1/2
	⑤	36WF150	54-8 7/8
	①	36WF150	52-6 7/8
SPAN 2	②③	30WF116	52-6 7/8
	④	30WF116	54-9 7/8
	⑤	36WF150	57-1 7/8
SPAN 3	**①	36WF194	75-11 3/8
	②③④	36WF160	75-11 3/8
	⑤	36WF194	75-11 3/8
	①	36WF160	66-5 7/8
SPAN 4	②	36WF160	70-1 7/8
	③	36WF160	74-0 1/2
	④	36WF160	78-0 3/8
	**⑤	36WF194	82-0 1/2



**FOR  
INFORMATION  
ONLY**

ILLINOIS DEPARTMENT OF TRANSPORTATION  
  
**EXISTING BRIDGE PLAN  
LOCATION 3, SN 016-1010**

**SHEET 3 OF 3**

ROUTE VARIOUS	SECTION 2008-052 BP	COUNTY VARIOUS	TOTAL SHEETS 19	SHEET NUMBER 15A
------------------	------------------------	-------------------	--------------------	---------------------

CONTRACT 60F03

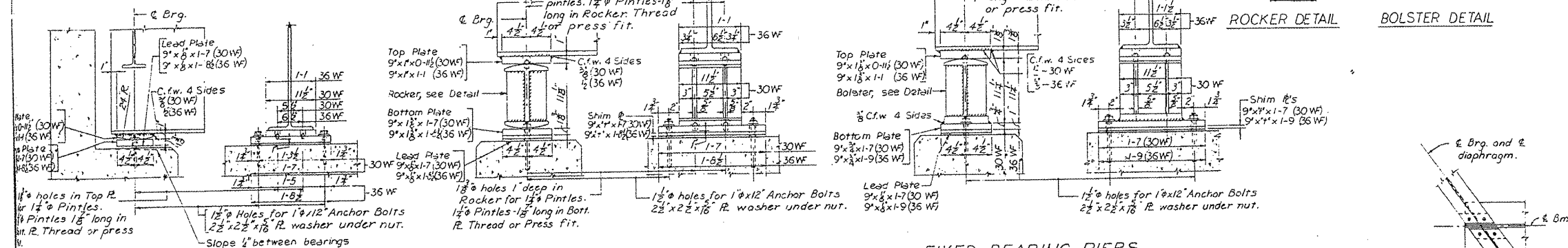
SECTION	COUNTY	TOTAL SHEETS	SHEET NO.
F.A.R1.42	3128-Z-HB-1	COOK	27
FED. ROAD DIV. NO. 4 ILLINOIS PROJECT			16

PINTLE DETAIL

PLAN  
FIXED BEARING AT ABUTMENTS  
EXPANSION BEARING AT PIERS

PLAN  
FIXED BEARING AT PIERS

ROCKER DETAIL  
BOLSTER DETAIL

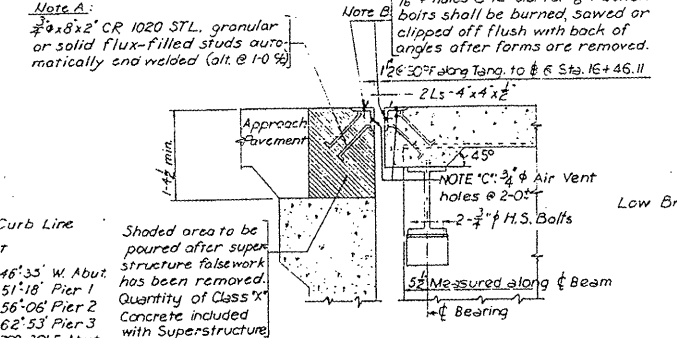


FIXED BEARING-ABUTMENTS

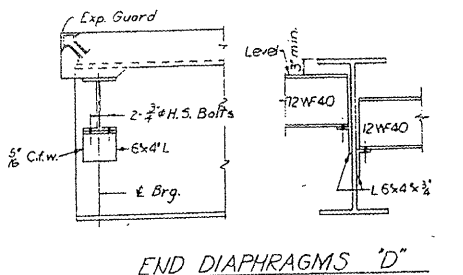
EXPANSION BEARING-PIERS

FIXED BEARING-PIERS

33 Alt. Spcs @ 1-0 = 33-0 each side	W. Abut.
36 Alt. Spcs @ 1-0 = 36-0 each side	Pier 1
40 Alt. Spcs @ 1-0 = 40-0 each side	Pier 2
48 Alt. Spcs @ 1-0 = 48-0 each side	Pier 3
61 Alt. Spcs @ 1-0 = 61-0 each side	E. Abut.
3-6 1/2	3-6 1/2



INTERMEDIATE DIAPHRAGMS 'D1' & 'D2'



PLAN OF EXPANSION GUARDS

SECTION AT PIERS

Bearing For Beam	SHIM PLATE THICKNESS "t"						
	Span 1	Span 2	Span 3	Span 4			
1							
2							
3							
4							
5							

STATE OF ILLINOIS  
DEPARTMENT OF PUBLIC WORKS & BLDGS.  
DIVISION OF HIGHWAYS  
BEARING AND STEEL DETAILS  
RAMP "A" OVER SERVICE DRIVE AND  
B. & O. C. T. R. R. FUTURE SPUR TRACK  
STATION 16 + 46.11  
F.A.R1.42 COOK CO. SECTION 3128-Z-HB-1  
H. W. LOCHNER INC.  
CONSULTING ENGINEERS  
CHICAGO, ILLINOIS  
SHEET 9 of 16

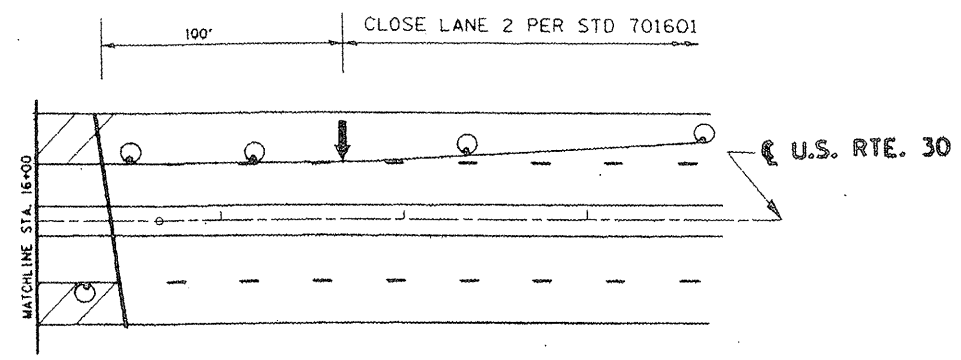
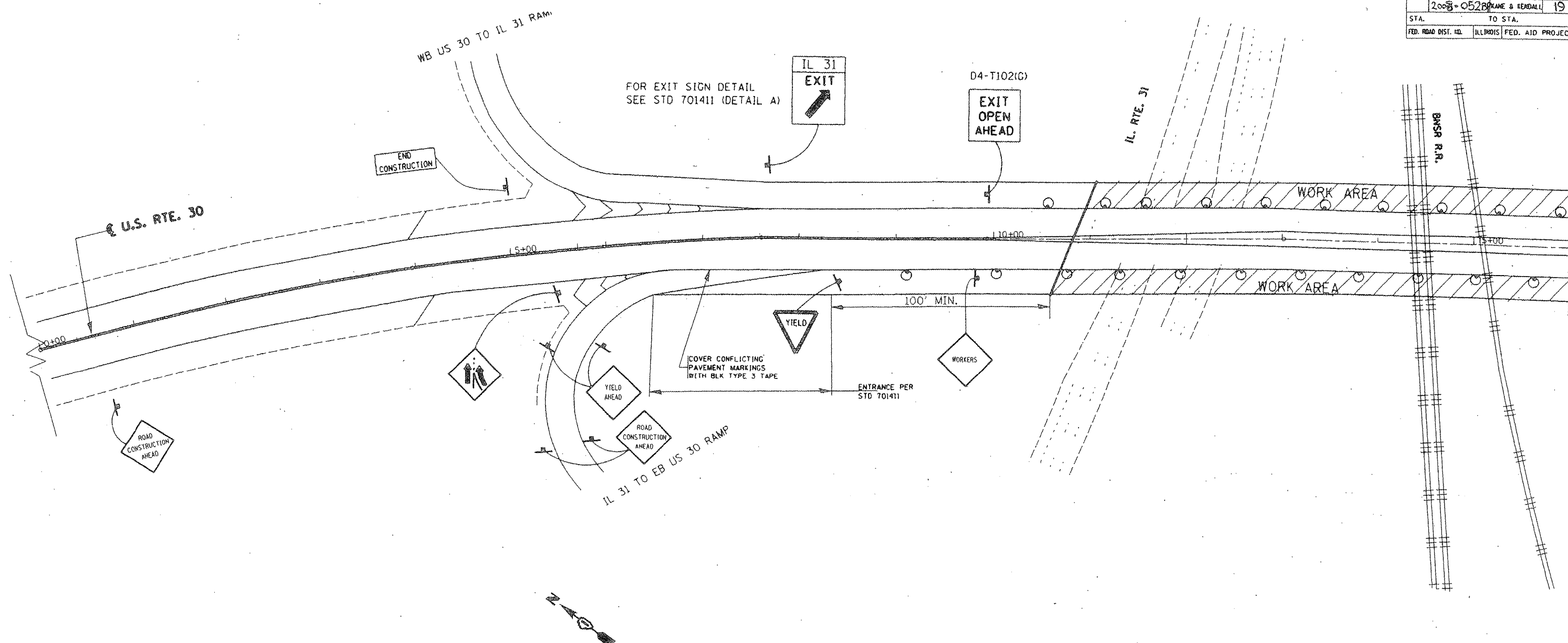
FOR  
INFORMATION  
ONLY

SHEET 3 OF 3




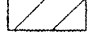

ILLINOIS DEPARTMENT OF TRANSPORTATION

EXISTING BRIDGE PLAN  
LOCATION 3, SN 016-1010

F.A.P. RTE.	SECTION	COUNTY	TOTAL SHEETS	SHEET NO.
2008-0528	BLAKE & RENDALL		19	16
STA.		TO STA.		
FED. ROAD DIST. NO.		ILLINOIS FED. AID PROJECT		



**LEGEND**

-  ARROW BOARD
-  DRUM OR BARRICADE
-  SIGN
-  WORK AREA
-  TYPE II BARRICADE, DRUM OR VERTICAL BARRICADE WITH STEADY BURNING MONODIRECTIONAL LIGHTS

END CONSTRUCTION

TYPE III TAPE & ITS REMOVAL & TRAFFIC CONTROL SHOWN ON THIS SHEET ARE INCLUDED IN THE COST OF "TRAFFIC CONTROL & PROTECTION (SPECIAL)"

REVISIONS	
NAME	DATE

ILLINOIS DEPARTMENT OF TRANSPORTATION  
 LOC 2  
 US ROUTE 30 OVER  
 IL 31 & BNSF R.R.  
 TRAFFIC STAGING PLAN

SCALE: VERT. 1"=50'  
 HORIZ. 1"=100'  
 DATE 10/2/2007

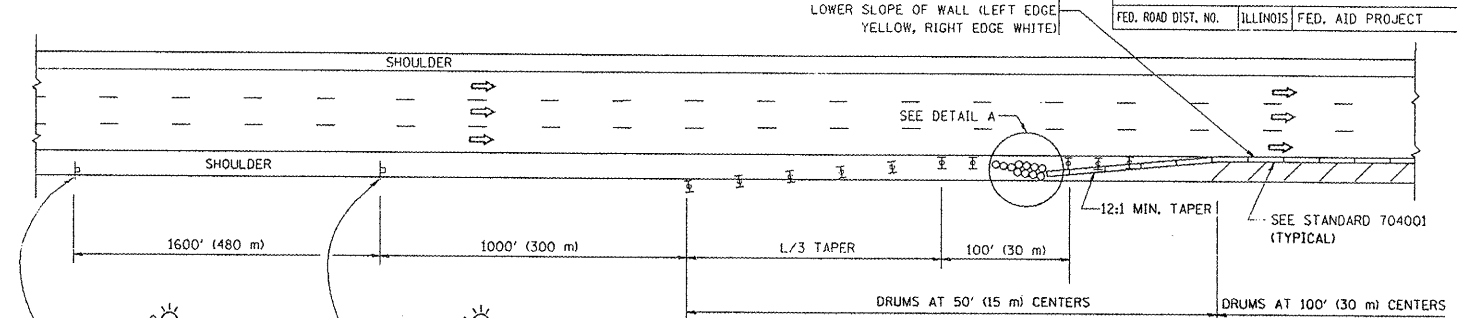
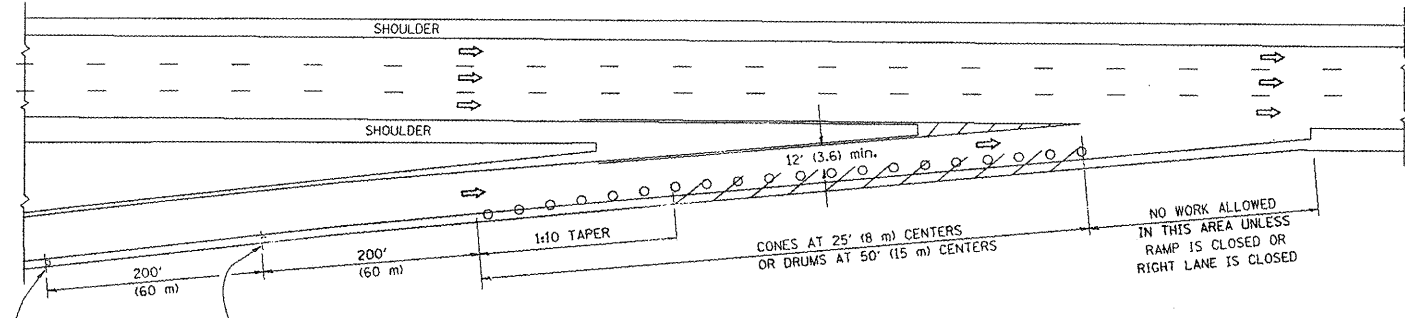
DRAWN BY  
 CHECKED BY

PLOT DATE: 10/2/2007  
 FILE NAME: \\snp\proj\10\101688\sh-10\staging.dwg  
 PLOT SCALE: 1/8"=1'-0" / IN.  
 USER NAME: slumel11

PARTIAL RAMP CLOSURE DETAILS

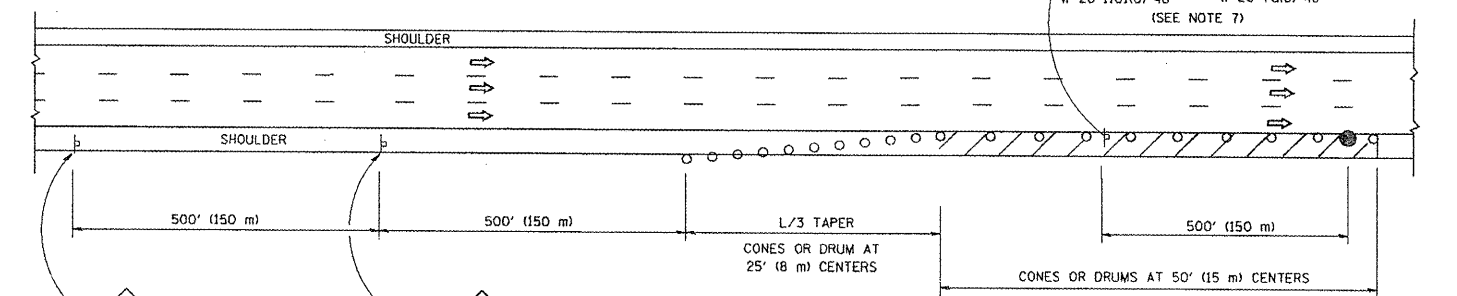
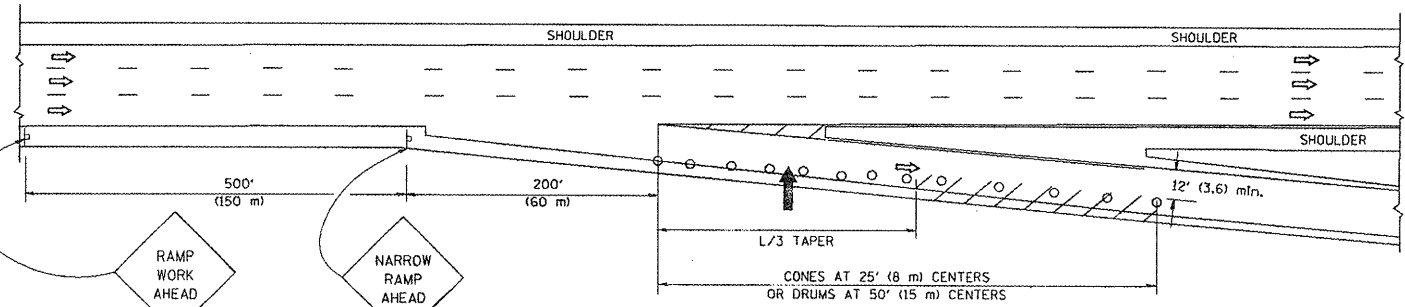
SHOULDER CLOSURE DETAILS

F.A. RTE.	SECTION	COUNTY	TOTAL SHEETS	SHEET NO.
2008-0528p	Various	Various	19	17
STA. TO STA.		ILLINOIS FED. AID PROJECT		



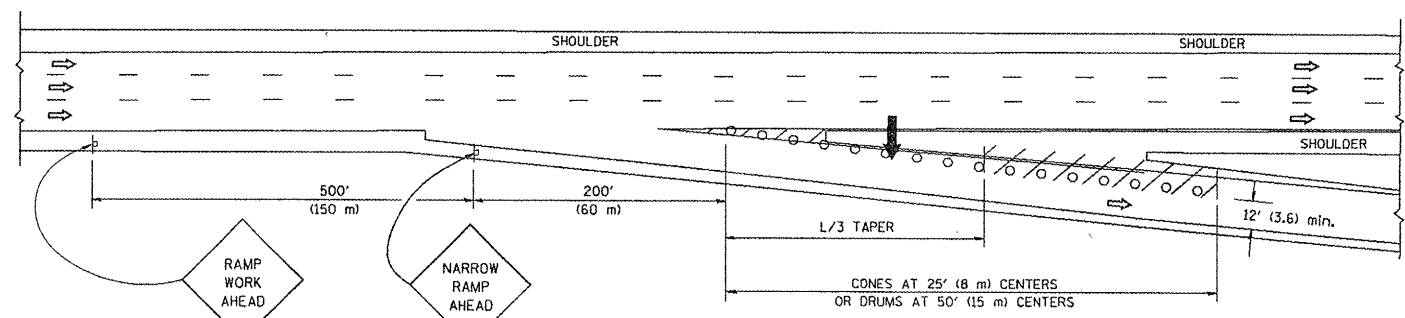
TYPICAL ENTRANCE RAMP

PERMANENT SHOULDER CLOSURE



TYPICAL EXIT RAMP

DAYTIME SHOULDER CLOSURE



TYPICAL EXIT RAMP

THIS DETAIL IS USED WHERE:  
 1. VEHICLES, EQUIPMENT, WORKERS OR THEIR ACTIVITIES ENCRDACH IN AN AREA CLOSER THAN 15' (4.5 m) TO THE EDGE OF PAVEMENT FOR A PERIOD IN EXCESS OF 15 MINUTES.

SYMBOLS

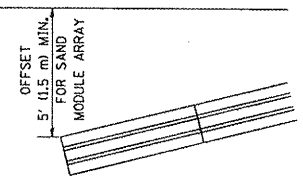
- ARROWBOARD
- WORK AREA
- SIGN ON PORTABLE OR PERMANENT SUPPORT
- FLAGGER WITH CONTROL SIGN
- TYPE II BARRICADE, DRUM OR VERTICAL BARRICADE WITH STEADY BURN MONO-DIRECTIONAL LIGHT
- CONE, DRUM OR BARRICADE

GENERAL NOTES

1. THE "L" DISTANCE EQUALS:  
 SPEED LIMIT FORMULAS  
 45 mph (80 km/h) METRIC ENGLISH  
 OR GREATER: L=0.65(W/S) L=(W/S)  
 W = WIDTH OF OFFSET IN FEET (METERS)  
 S = NORMAL POSTED SPEED MPH (KM/H)
2. PLASTIC DRUMS WITH HIGH PERFORMANCE REFLECTIVE SHEETING AND STEADY BURNING LIGHTS ARE REQUIRED FOR ALL NIGHTTIME CLOSURES.
3. ALL SIGNS SHALL BE POST MOUNTED IF THE CLOSURE TIME EXCEEDS FOUR DAYS.
4. FLASHING LIGHTS SHALL BE USED DURING THE HOURS OF DARKNESS AND SHALL BE INSTALLED ABOVE THE FIRST TWO SETS OF SIGNS.

5. THE IMPACT ATTENUATOR, TEMPORARY IS NOT REQUIRED WHEN THE TEMPORARY CONCRETE BARRIER WALL IS PROTECTED BY OR IS TIED INTO THE EXISTING GUARDRAIL. IF OFFSET IS LESS THAN 5 FEET USE "TRAFFIC BARRIER TERMINAL, TYPE III, TEMPORARY" DEVICE TO MEET NCHRP350 FOR POSTED SPEED.
6. AUTHORIZATION FROM THE DISTRICT'S BUREAU OF TRAFFIC IS REQUIRED FOR ALL FREEWAY CLOSURES.
7. THE FLAGGER AND FLAGGER SIGN ARE REQUIRED AT THE ABOVE WORK SITES WHEN:
  - a. FOUR OR MORE WORK VEHICLES ENTER THE TRAFFIC LANES IN A ONE HOUR PERIOD.
  - b. THE WORK AVTIVITY REQUIRES FREQUENT ENCRDACHMENT INTO THE LANE OPEN TO TRAFFIC.
 THE FLAGGER SHALL BE STATIONED APPROXIMATELY 100' (30 m) TO 200' (60 m) IN ADVANCE OF THE WORKERS.

ARRAY DESIGN PER MANUFACTURER TO BE NCHRP 350 COMPLIANT FOR POSTED SPEED.



DETAIL "A"  
 IMPACT ATTENUATOR, TEMPORARY  
 (SEE NOTE 5)

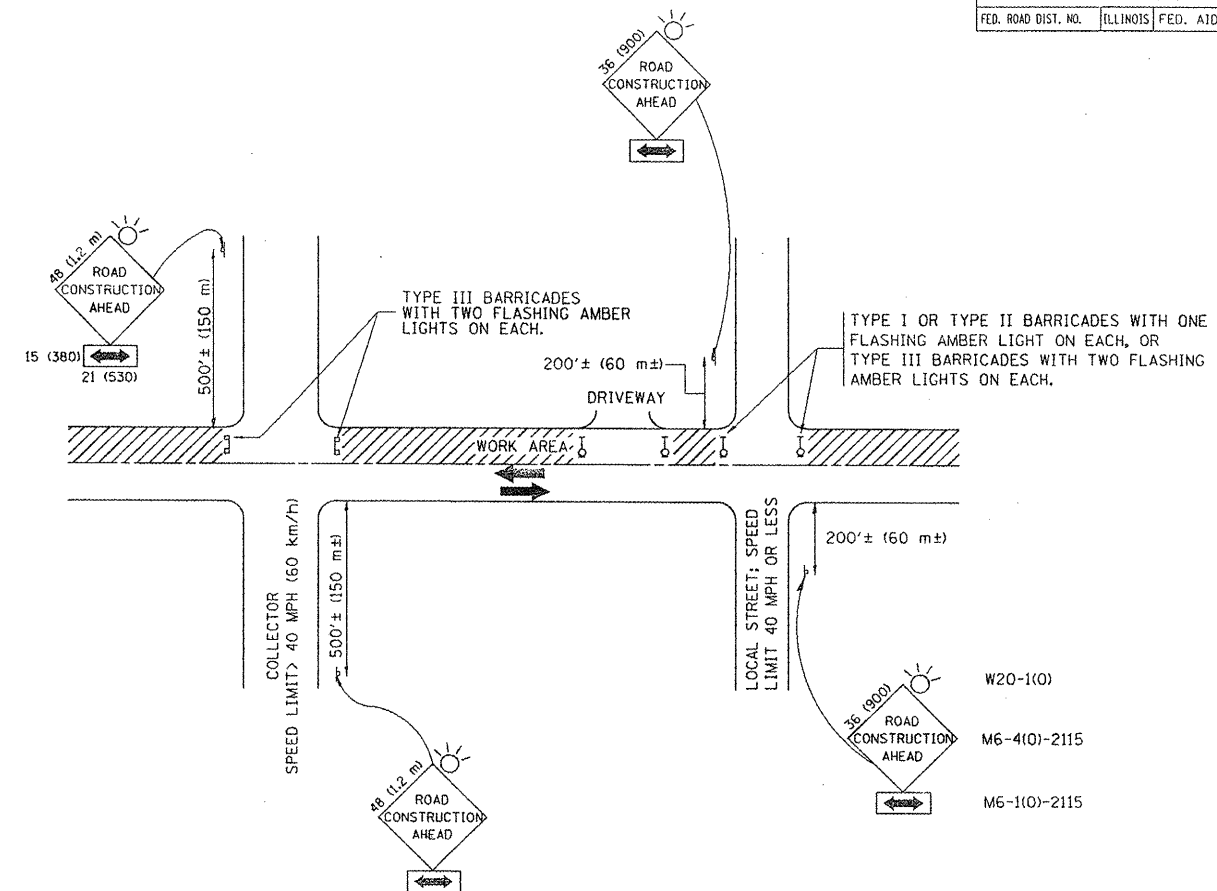
ALL DIMENSIONS ARE IN INCHES (MILLIMETERS) UNLESS OTHERWISE SHOWN.

REVISIONS	
NAME	DATE
DWS	11/96
JAF	12/02
NCHRP 350	04/03
JAF	2/06
SPB	1/07

ILLINOIS DEPARTMENT OF TRANSPORTATION  
 TRAFFIC CONTROL DETAILS  
 FOR FREEWAY  
 SHOULDER CLOSURES  
 PARTIAL RAMP CLOSURES  
 DESIGNED BY: DWS  
 DRAWN BY:  
 CHECKED BY:  
 TC-17

PLOT DATE = 3/7/2007  
 PLOT SCALE = 60.0000 / IN.  
 USER NAME = bbeard

F.A. RTE.	SECTION	COUNTY	TOTAL SHEETS	SHEET NO.
	2028-052 BP	Various	19	19
STA.	TO STA.			
FED. ROAD DIST. NO.	ILLINOIS	FED. AID PROJECT		



TRAFFIC CONTROL AND PROTECTION FOR SIDE ROADS, INTERSECTIONS, AND DRIVEWAYS

NOTES:

A. FOR NO LANE RESTRICTION ON THE SIDE ROAD OR DRIVEWAYS

- SIDE ROAD WITH A SPEED LIMIT OF 40 MPH (60 km/h) OR LESS AS SHOWN ON THE DRAWING AND AS DIRECTED BY THE ENGINEER:
  - ONE ROAD CONSTRUCTION AHEAD SIGN 36 x 36 (900x900) WITH A FLASHER AND FLAG MOUNTED ON IT APPROXIMATELY 200' (60 m) IN ADVANCE OF THE MAIN ROUTE.
  - THE CLOSED PORTION OF THE MAIN ROUTE SHALL BE PROTECTED BY BLOCKING WITH TYPE I, TYPE II OR TYPE III BARRICADES, 1/3 OF THE CROSS SECTION OF THE CLOSED PORTION.
- SIDE ROAD WITH A SPEED LIMIT GREATER THAN 40 MPH (60 km/h) AS SHOWN ON THE DRAWING AND AS DIRECTED BY THE ENGINEER:
  - ONE ROAD CONSTRUCTION AHEAD SIGN 48 x 48 (1.2 m x 1.2 m) WITH A FLASHER MOUNTED ON IT APPROXIMATELY 500' (150 m) IN ADVANCE OF THE MAIN ROUTE.
  - THE CLOSED PORTION OF THE MAIN ROUTE SHALL BE PROTECTED BY BLOCKING WITH TYPE III BARRICADES, 1/2 OF THE CROSS SECTION OF THE CLOSED PORTION.
- WHEN THE SIDE ROAD LIES BETWEEN THE BEGINNING OF THE MAINLINE SIGNING AND THE WORK ZONE, A SINGLE HEADED ARROW (M6-1) SHALL BE USED IN LIEU OF THE DOUBLE HEADED ARROW (M6-4).

B. FOR A LANE CLOSURE ON A SIDE ROAD OR DRIVEWAY:

USE APPLICABLE PORTIONS OF THE TYPICAL APPLICATION OF TRAFFIC CONTROL DEVICES (STD. 701501, STD. 701606 OR THE APPROPRIATE STANDARD). THE SPACING OF SIGNS AND BARRICADES SHALL BE ADJUSTED FOR FIELD CONDITIONS AS DIRECTED BY THE ENGINEER. THE DIRECTIONAL ARROW SHALL BE COVERED OR REMOVED WHEN NO LONGER CONSISTENT WITH THE SIDE ROAD LANE CLOSURE.

C. ADVANCE WARNING SIGNS ARE TO BE OMITTED ON DRIVEWAY UNLESS OTHERWISE NOTED.

D. THE TRAFFIC CONTROL AND PROTECTION FOR SIDE ROADS, INTERSECTIONS, AND DRIVEWAYS SHALL BE INCIDENTAL TO THE COST OF SPECIFIED TRAFFIC CONTROL STANDARDS OR ITEMS.

All dimensions are in millimeters (inches) unless otherwise shown.

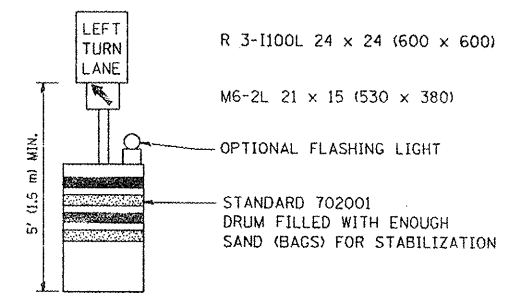
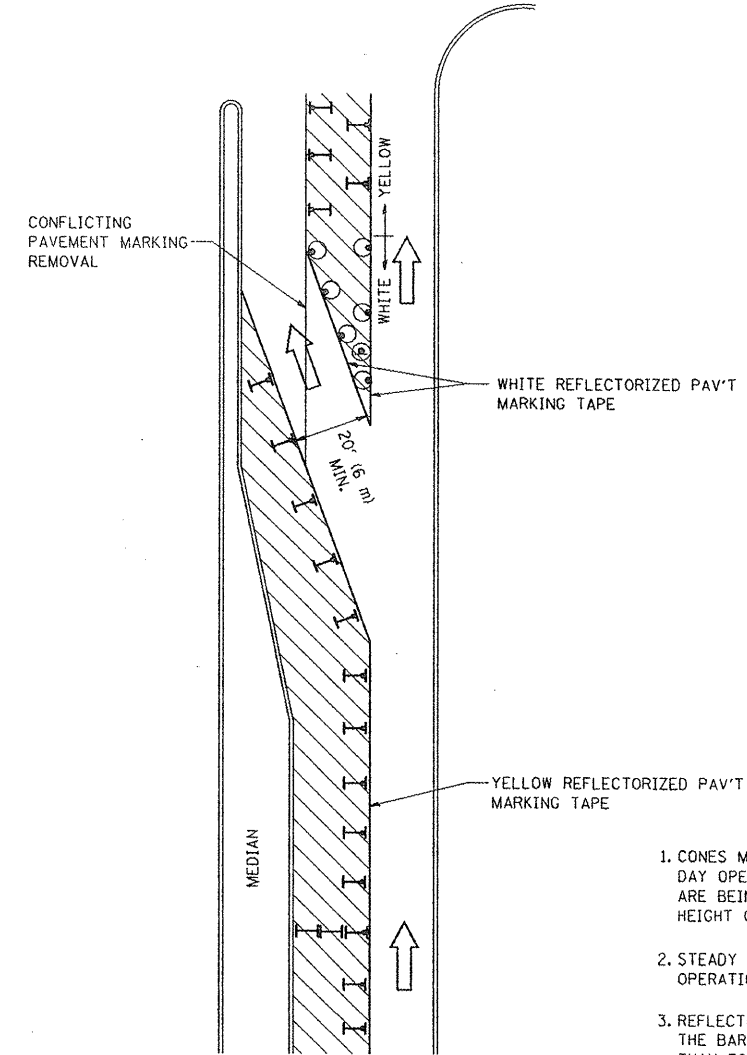
REVISIONS	
NAME	DATE
LHA	6/89
T. RAMMACHER	09/08/94
J. OBERLE	10/18/95
A. HOUSEH	03/06/96
A. HOUSEH	10/15/96
T. RAMMACHER	01/06/00

ILLINOIS DEPARTMENT OF TRANSPORTATION  
 TRAFFIC CONTROL AND PROTECTION  
 FOR  
 SIDE ROADS, INTERSECTIONS, AND  
 DRIVEWAYS

SCALE: NONE

DRAWN BY  
 CHECKED BY  
 TC-10

F.A. RTE.	SECTION	COUNTY	TOTAL SHEETS	SHEET NO.
	2008-0528P	Various	19	19
STA.	TO STA.			
FED. ROAD DIST. NO.	ILLINOIS FED. AID PROJECT			



GENERAL NOTES

1. CONES MAY BE SUBSTITUTED FOR BARRICADES OR DRUMS AT HALF THE SPACING DURING DAY OPERATIONS. CONES SHALL BE A MINIMUM OF 28 (710) IN HEIGHT. WHEN CONES ARE BEING USED, THE "LEFT TURN LANE" SIGN MAY BE SKID MOUNTED AT A MINIMUM HEIGHT OF 5' (1.5 m).
2. STEADY BURNING LIGHTS WILL NOT BE REQUIRED ON BARRICADES OR DRUMS FOR DAY OPERATIONS. ALL LIGHTS SHALL BE MONODIRECTIONAL.
3. REFLECTORIZED TEMPORARY PAVEMENT MARKING TAPE SHALL BE PLACED THROUGHOUT THE BARRICADED AREA OF EACH TURN BAY WHERE THE CLOSURE TIME IS GREATER THAN FOURTEEN DAYS.
4. THIS APPLICATION ALSO APPLIES WHEN WORK IS BEING PERFORMED IN THE RIGHT LANE(S) AND THE RIGHT TURN BAY IS TO REMAIN OPEN. UNDER THIS CONDITION, "RIGHT TURN LANE" R3-100 24 x 24 (600 x 600) AND M6-2R 21 x 15 (530 x 380) SHALL BE USED.
5. THESE CONTROLS SHALL SUPPLEMENT MAINLINE TRAFFIC CONTROL FOR LANE CLOSURES.
6. LONGITUDINAL DIMENSIONS MAY BE ADJUSTED TO FIT FIELD CONDITIONS.
7. FORM BT 725 IS REQUIRED.
8. TRAFFIC CONTROL AND PROTECTION AT TURN BAYS (TO REMAIN OPEN TO TRAFFIC) SHALL BE INCLUDED IN THE COST SPECIFIED TRAFFIC CONTROL STANDARDS OR ITEMS.

LEGEND

- WORK AREA
- LANE OPEN TO TRAFFIC
- TYPE I OR II BARRICADE WITH STEADY BURN LIGHT
- DRUM WITH STEADY BURN LIGHT
- DRUM WITH SIGN (WITH OPTIONAL FLASHING LIGHT) SEE DETAIL
- TYPE I OR II CHECK BARRICADE WITH FLASHING LIGHT

All dimensions are in inches (millimeters) unless otherwise shown.

REVISIONS	
NAME	DATE
T. RAMMACHER	09/08/94
A. HOUSEH	11/07/95
A. HOUSEH	10/12/96
T. RAMMACHER	01/06/00

ILLINOIS DEPARTMENT OF TRANSPORTATION  
**TRAFFIC CONTROL AND PROTECTION  
 AT TURN BAYS  
 (TO REMAIN OPEN TO TRAFFIC)**

SCALE: NONE

DRAWN BY  
 CHECKED BY LHA  
 TC-14