

NOTE:

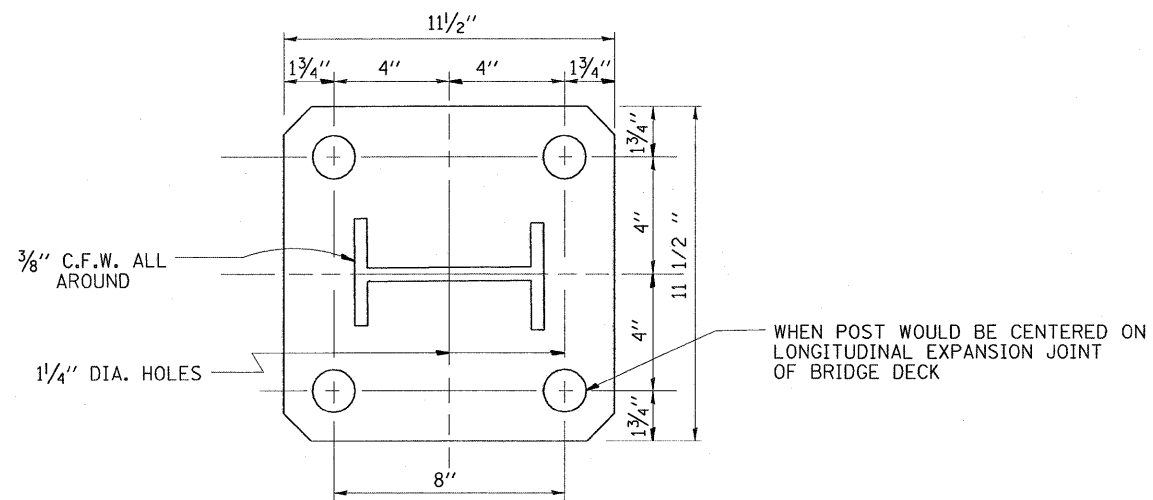
FOR DETAILS OF RAIL ELEMENTS, RAIL SPLICING, NUT, BOLT AND SIDE VIEW OF RAIL, SEE STANDARD 2230-2.

ALL WELDS SHALL BE GROUND SMOOTH

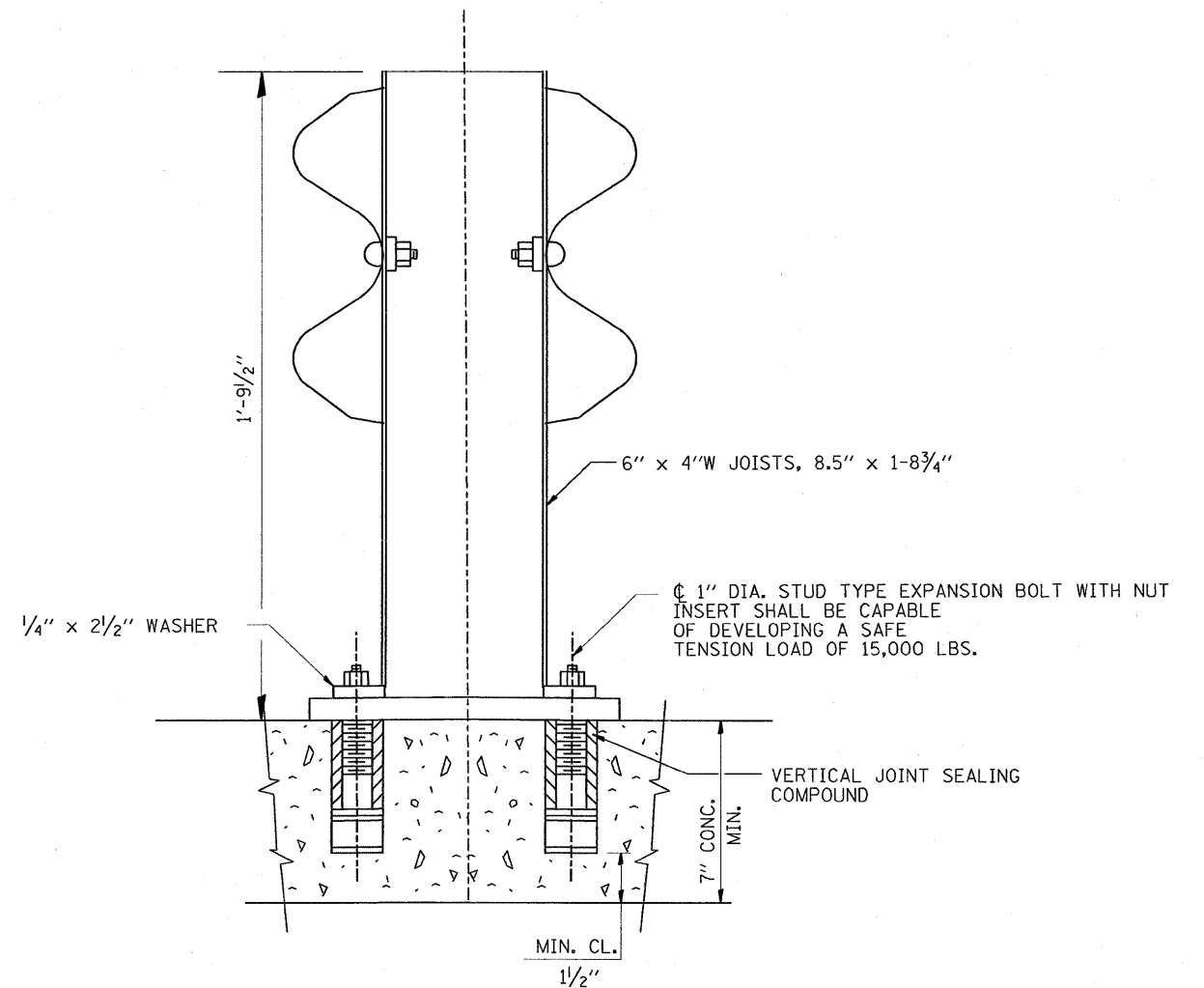
POSTS SHALL BE CUT AND WELDED TO THE BASE PLATE SO THAT THE POST WILL BE PLUMB WHEN ERECTED.

TWO PERCENT (2%) OF ALL ANCHOR BOLTS SHALL BE TEST LOADED IN PLACE, MINIMUM TEST LOAD=8 KIPS. IF ONE ANCHOR BOLT FAILS DURING THE TEST, TWO OTHER ANCHOR BOLTS SHALL BE TESTED. TESTING EQUIPMENT SHALL BE BOLT COMPANIES.

PROVIDE 1/8" AND 2/16" GALVANIZED SHIMS FOR 25% OF THE POSTS.



RAIL POST BASE \square
 \square 11 1/2" x 1 1/4" x 11 1/2"



FILE NAME = W:\diststd\22x34\bm02.dgn	USER NAME = midjja	DESIGNED -	REVISED - R. RITCHIE 05-02-00	STATE OF ILLINOIS DEPARTMENT OF TRANSPORTATION	ANCHOR DETAIL FOR STEEL PLATE BEAM GUARDRAIL ON CONCRETE			F.A. -	SECTION	COUNTY	TOTAL	SHEET			
		DRAWN - RFL	REVISED -		SCALE: NONE	SHEET NO. 1	OF 1	SHEETS	STA.	TO STA.	VAR.	2008-057 GRR	VARIOUS	22	11
		CHECKED -	REVISED -									BM-02	CONTRACT NO. 60F15		
		PLOT DATE = 8/27/2008	DATE = 10-31-88									FED. ROAD DIST. NO. 1	ILLINOIS FED. AID PROJECT		