

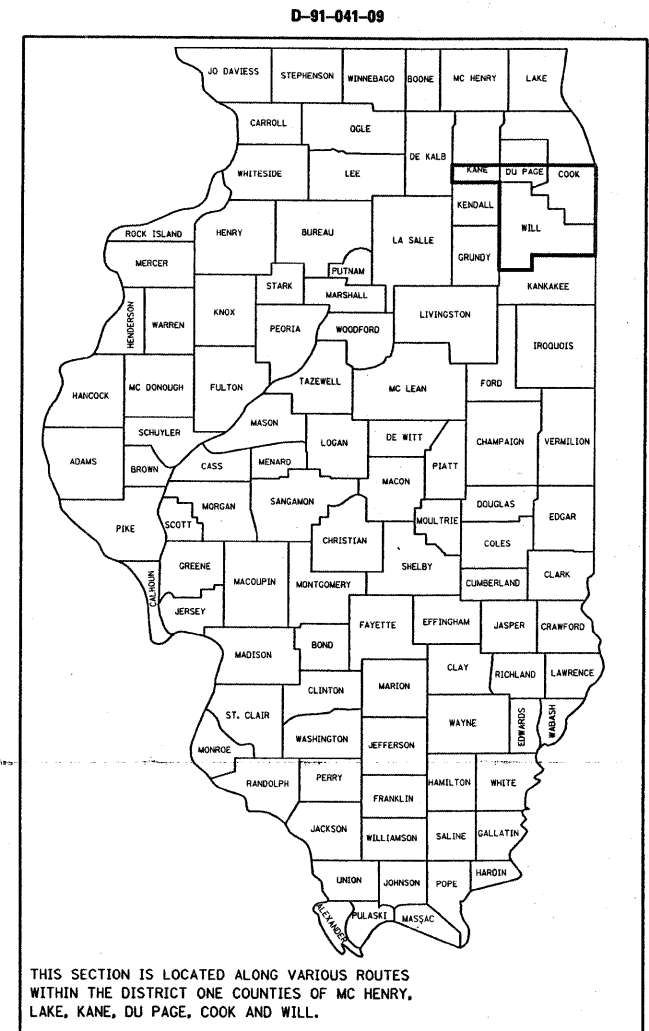
F.A. RTE.	SECTION	COUNTY	TOTAL SHEETS	SHEET NO.
VAR	2008-060 I	VARIOUS	13	1
FED. ROAD DIST. NO.	ILLINOIS	CONTRACT NO. 60F18		

STATE OF ILLINOIS  
DEPARTMENT OF TRANSPORTATION  
DIVISION OF HIGHWAYS

**PROPOSED  
HIGHWAY PLANS**

FOR INDEX OF SHEETS, SEE SHEET NO. 2

**ROUTE: VARIOUS EXPRESSWAYS AND ARTERIAL  
HIGHWAYS – SOUTHERN PART, DISTRICT ONE  
SECTION: 2008-060 I  
FENCE REPAIR  
COUNTY: VARIOUS  
C-91-041-09**



C.U.A.N.  
CHICAGO UTILITY ALERT NETWORK  
1-312-744-7000

J.U.L.I.E.  
JOINT UTILITY LOCATION INFORMATION FOR EXCAVATION  
1-800-892-0123  
OR 811

**SEE LOCATION MAPS  
SHEETS 4 THRU 7**

PROJECT ENGINEER: ROBERT BORO (847) 705-4178  
PROJECT MANAGER: KEN ENG  
CONTRACT NO. 60F18

STATE OF ILLINOIS  
DEPARTMENT OF TRANSPORTATION  
DIVISION OF HIGHWAYS

SUBMITTED AUGUST 26, 20 08

Diana M. O'Keefe DEPUTY DIRECTOR OF HIGHWAYS, REGION ENGINEER  
October 3, 20 08

Eric E. Harms ENGINEER OF DESIGN AND ENVIRONMENT  
October 3, 20 08

Christine M. Reed DIRECTOR OF HIGHWAYS, CHIEF ENGINEER

**PRINTED BY THE AUTHORITY  
OF THE STATE OF ILLINOIS**

**INDEX OF SHEETS**

1. TITLE SHEET
2. INDEX OF SHEETS  
LIST OF APPLICABLE STATE STANDARDS
3. SUMMARY OF QUANTITIES
4. COOK COUNTY (SOUTH OF ILL. 38) LOCATION MAP
5. DUPAGE COUNTY (SOUTH OF ILL. 38) LOCATION MAP
6. KANE COUNTY (SOUTH OF ILL. 38) LOCATION MAP
7. WILL COUNTY LOCATION MAP
8. DETAILS OF PEDESTRIAN BARRIER TYPE III (STD. 10-SS-514R)
9. CHAIN LINK FENCE (STD. 10-SS-506B)
10. CHAIN LINK FENCE POST SLEEVE REPAIR DETAIL
11. PROPOSED PEDESTRIAN BARRIER AND CHAIN LINK FENCE  
WITH TENSION WIRE AND FENCE RAIL REMOVAL
12. SPECIAL DETAILS
13. TRAFFIC CONTROL DETAILS FOR SHOULDER CLOSURE AND  
PARTIAL RAMP CLOSURES

**STATE STANDARDS**

**DESCRIPTION**

664001-01	CHAIN LINK FENCE
665001-01	WOVEN WIRE FENCE
701001-01	OFF-RD OPERATIONS, 2L, 2W, MORE THAN 15' AWAY
701006-02	OFF-RD OPERATIONS, 2L, 2W, 15' TO 24" FROM PAVEMENT EDGE
701101-01	OFF-RD OPERATIONS, MULTILANE, 15' TO 24" FROM PAVEMENT EDGE
701106-01	OFF-RD OPERATIONS, MULTILANE, MORE THAN 15' AWAY
701201-02	LANE CLOSURE, 2L, 2W, DAY ONLY, FOR SPEED > 45 MPH
701301-02	LANE CLOSURE, 2L, 2W, SHORT TIME OPERATIONS
701421-01	LANE CLOSURE, MULTILANE, DAY OPERATIONS ONLY, FOR SPEEDS > 45 MPH TO 55 MPH
701422-01	LANE CLOSURE, MULTILANE, FOR SPEEDS > 45 MPH TO 55 MPH
701501-04	URBAN LANE CLOSURE, 2L, 2W, UNDIVIDED
701606-05	URBAN LANE CLOSURE, MULTILANE, 2W WITH MOUNTABLE MEDIAN
710701-05	URBAN LANE CLOSURE, MULTILANE INTERSECTION
701801-03	LANE CLOSURE MULTILANE 1W OR 2W CROSSWALK OR SIDEWALK CLOSURE
701901	TRAFFIC CONTROL DEVICES

F.A. RTE.	SECTION	COUNTY	TOTAL SHEETS	SHEET NO.
VAR	2008-060 I	VARIOUS	13	3
FED. ROAD DIST. NO. 1		ILLINOIS	HIGHWAY PROJECT	

CONTRACT NO. 60F18

SUMMARY OF QUANTITIES			URBAN				CONSTRUCTION TYPE CODE: Y102				
CODE NO	ITEM	UNIT	TOTAL QUANTITIES	100% STATE CONT. MAINT.	100% STATE MCHD						
66400505	CHAIN LINK FENCE, 8'	FOOT	215	170	45						
66410300	CHAIN LINK FENCE REMOVAL	FOOT	50	40	10						
66410705	CHAIN LINK GATES (SPECIAL)	SQ FT	875	700	175						
66500105	WOVEN WIRE FENCE, 4'	FOOT	4000	3200	800						
X0300160	PULL POST ARRANGEMENT	EACH	2	1	1						
X0321153	CHAIN LINK FENCE POST SLEEVE REPAIR	EACH	50	40	10						
X6640100	FENCE RAIL REMOVAL	FOOT	2000	1600	400						
Z0009600	CHAIN LINK FABRIC, SPECIAL, 5'-0"	FOOT	25	20	5						
Z0009700	CHAIN LINK FABRIC, SPECIAL, 6'-0"	FOOT	1600	1320	280						
Z0009800	CHAIN LINK FABRIC, SPECIAL, 7'-0"	FOOT	10	8	2						
Z0009900	CHAIN LINK FABRIC, TYPE 1, 4'-0"	FOOT	21000	16800	4200						
Z0010300	CHAIN LINK FABRIC, TYPE 3, SPECIAL	FOOT	500	400	100						
Z0033200	LINE POST, TYPE 1	EACH	900	720	180						
Z0033305	LINE POST, TYPE 3 SPECIAL	EACH	25	20	5						
Z0042500	POST, SPECIAL	EACH	75	60	15						
Z0042505	POST REMOVAL AND REPLACEMENT	EACH	5	4	1						
Z0074000	TERMINAL POST, TYPE 1	EACH	50	40	10						
Z0074010	TERMINAL POST, TYPE 3 SPECIAL	EACH	5	4	1						


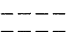

REVISIONS	
NAME	DATE

ILLINOIS DEPARTMENT OF TRANSPORTATION  
SUMMARY OF QUANTITIES

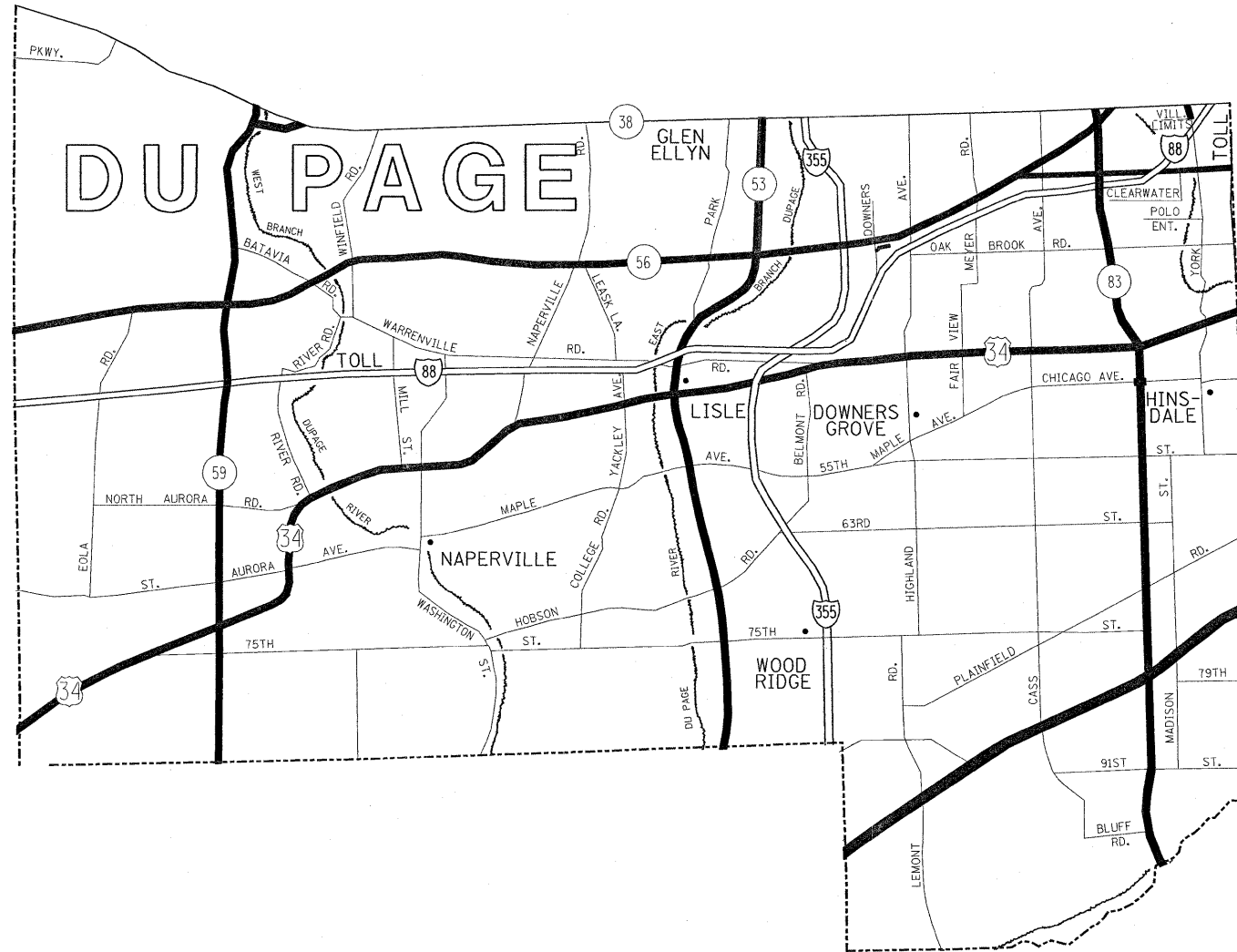
PLOT DATE: 8/29/2008

8/29/2008 8:00:00 AM C:\p139\maint\on-dn



- DISTRICT NO. 1**
-  STATE HIGHWAYS & EXPRESSWAYS WITHIN STATE JURISDICTION. (EXCEPT TOLLWAYS) AND CITY MAINTENANCE AGREEMENTS UNDER STATE JURISDICTION
  -  FUTURE HIGHWAYS
  -  VARIOUS AGENCIES HIGHWAYS

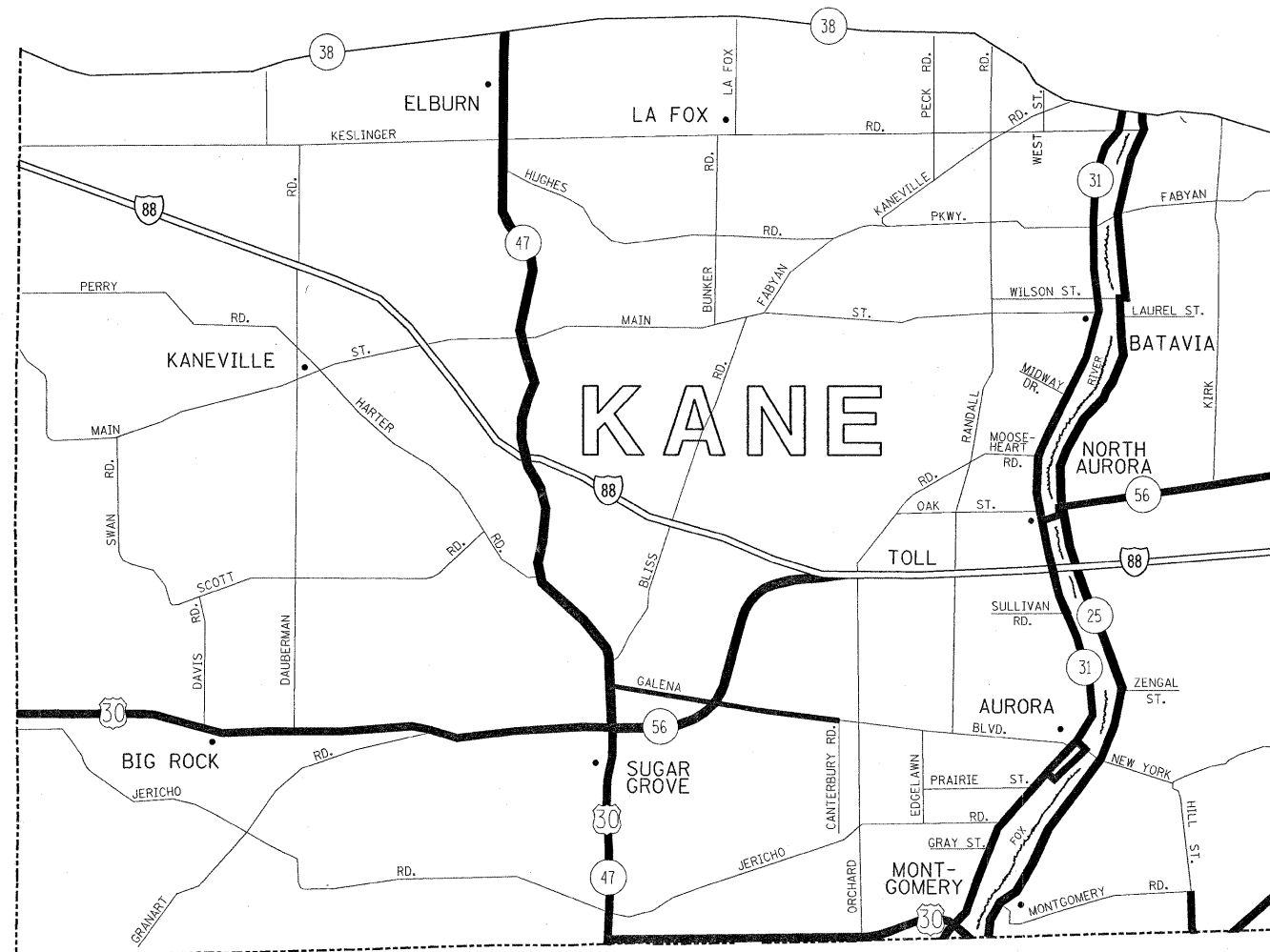
FILE NAME = c:\projects\m147393\maint.aa.dgn	USER NAME = midjja	DESIGNED -	REVISED -	<b>STATE OF ILLINOIS DEPARTMENT OF TRANSPORTATION</b>	<b>FENCE REPAIR LOCATION MAP - COOK COUNTY SOUTH OF IL RTE 38</b>				F.A. RTE.	SECTION	COUNTY	TOTAL SHEETS	SHEET NO.	
	PLOT SCALE = 50,000' / IN.	DRAWN -	REVISED -		SCALE:	SHEET NO.	OF SHEETS	STA.	TO STA.	VAR	2008-060 I	VARIOUS	13	4
	PLOT DATE = 8/29/2008	CHECKED -	REVISED -						CONTRACT NO. 60F18					
		DATE -	REVISED -						FED. ROAD DIST. NO. [ILLINOIS] FED. AID PROJECT					


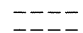



**DISTRICT NO. 1**

- STATE HIGHWAYS & EXPRESSWAYS WITHIN STATE JURISDICTION. (EXCEPT TOLLWAYS) AND CITY MAINTENANCE AGREEMENTS UNDER STATE JURISDICTION
- FUTURE HIGHWAYS
- VARIOUS AGENCIES HIGHWAYS

FILE NAME = c:\projects\m147393\maint.aa.dgn	USER NAME = midyja	DESIGNED -	REVISED -	<b>STATE OF ILLINOIS DEPARTMENT OF TRANSPORTATION</b>	<b>FENCE REPAIR LOCATION MAP - DuPAGE COUNTY SOUTH OF IL RTE 38</b>	F.A. RTE. VAR	SECTION 2008-060 I	COUNTY VARIOUS	TOTAL SHEETS 13	SHEET NO. 5
PLOT SCALE = 50,000' / IN.	CHECKED -	REVISED -	REVISED -			CONTRACT NO. 60F18				
PLOT DATE = 8/29/2008	DATE -	REVISED -	REVISED -			SCALE: SHEET NO. OF SHEETS STA. TO STA.				
						FED. ROAD DIST. NO. ILLINOIS FED. AID PROJECT				



- DISTRICT NO. 1**
-  STATE HIGHWAYS & EXPRESSWAYS WITHIN STATE JURISDICTION. (EXCEPT TOLLWAYS) AND CITY MAINTENANCE AGREEMENTS UNDER STATE JURISDICTION
  -  FUTURE HIGHWAYS
  -  VARIOUS AGENCIES HIGHWAYS

FILE NAME =  
c:\projects\m147393\main.aa.dgn

USER NAME = mdy,ja  
PLOT SCALE = 50,000' / IN.  
PLOT DATE = 8/29/2008

DESIGNED -  
DRAWN -  
CHECKED -  
DATE -

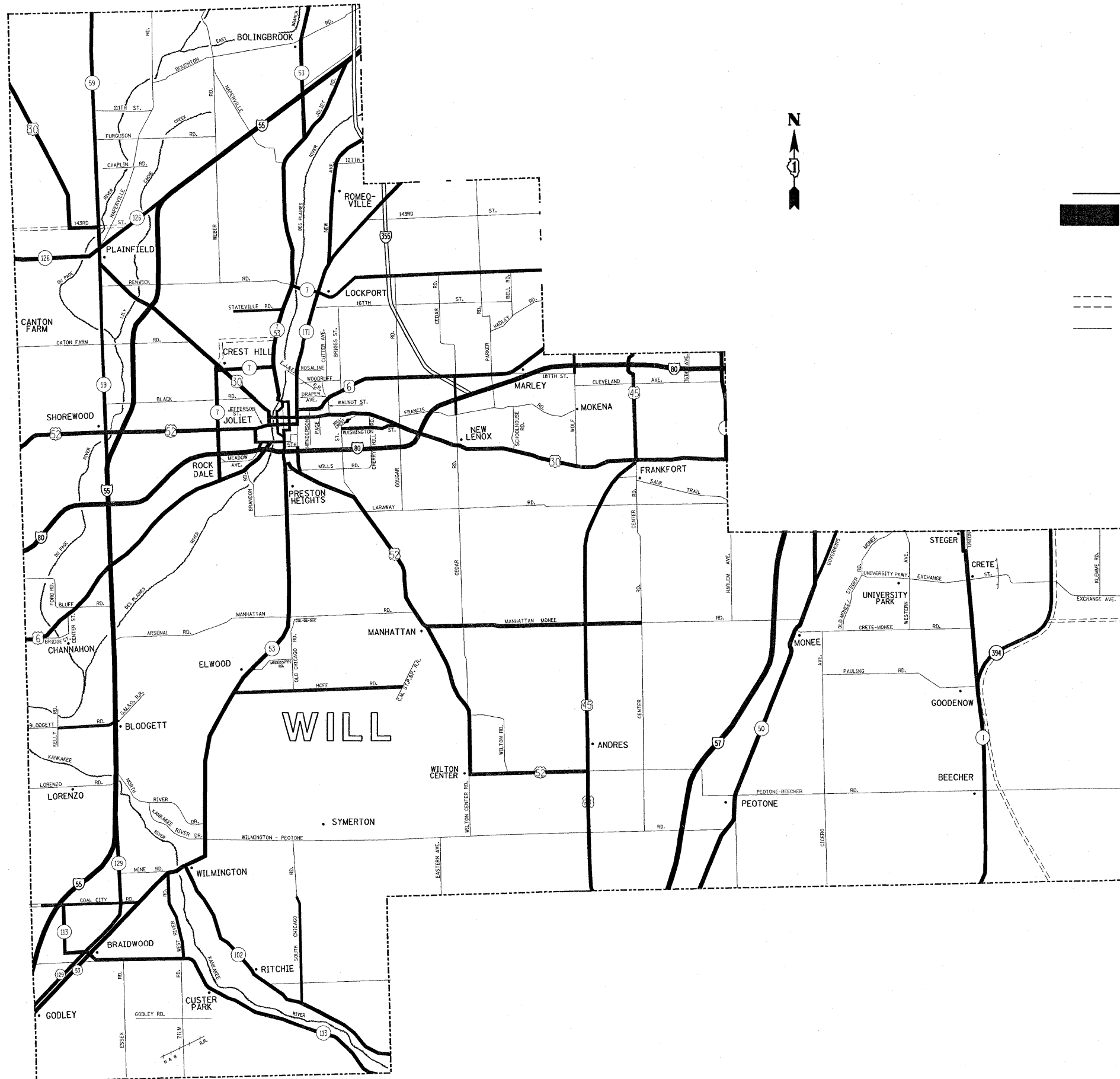
REVISED -  
REVISED -  
REVISED -  
REVISED -

**STATE OF ILLINOIS  
DEPARTMENT OF TRANSPORTATION**

**FENCE REPAIR LOCATION MAP - KANE COUNTY  
SOUTH OF IL RTE 38**

SCALE: SHEET NO. OF SHEETS STA. TO STA.

F.A. RTE.	SECTION	COUNTY	TOTAL SHEETS	SHEET NO.
VAR	2008-060 I	VARIOUS	13	6
CONTRACT NO. 60F18				
FED. ROAD DIST. NO. [ILLINOIS] FED. AID PROJECT				



**DISTRICT NO. 1**

- STATE HIGHWAYS & EXPRESSWAYS WITHIN STATE JURISDICTION. (EXCEPT TOLLWAYS) AND CITY MAINTENANCE AGREEMENTS UNDER STATE JURISDICTION**
- FUTURE HIGHWAYS**
- VARIOUS AGENCIES HIGHWAYS**

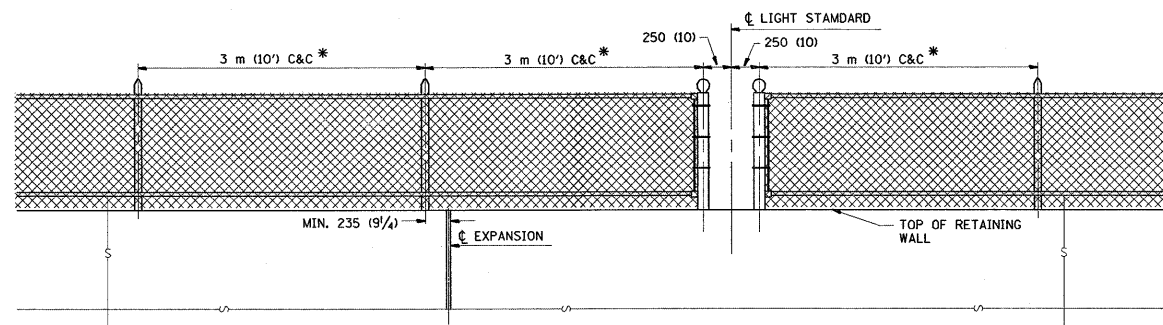


WILL

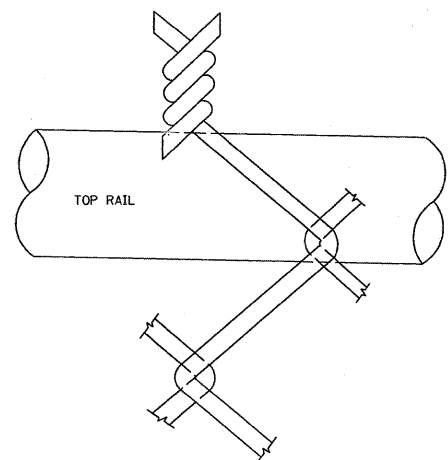
FILE NAME = c:\projects\m147993\maint_00.dgn	USER NAME = mcdjja	DESIGNED -	REVISED -	<b>STATE OF ILLINOIS DEPARTMENT OF TRANSPORTATION</b>	<b>FENCE REPAIR LOCATION MAP - WILL COUNTY</b>				F.A. RTE.	SECTION	COUNTY	TOTAL SHEETS	SHEET NO.
		DRAWN -	REVISED -						VAR	2008-060 I	VARIOUS	13	7
		CHECKED -	REVISED -		SCALE: SHEET NO. OF SHEETS STA. TO STA.				CONTRACT NO. 60F18				
		DATE -	REVISED -						FED. ROAD DIST. NO. ILLINOIS FED. AID PROJECT				

**NOTE**

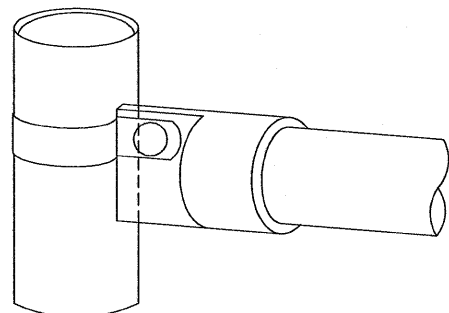
\* MAXIMUM POST SPACING SHALL BE 3 m (10') C&C EXCEPT WHERE OTHERWISE SHOWN ON PLANS



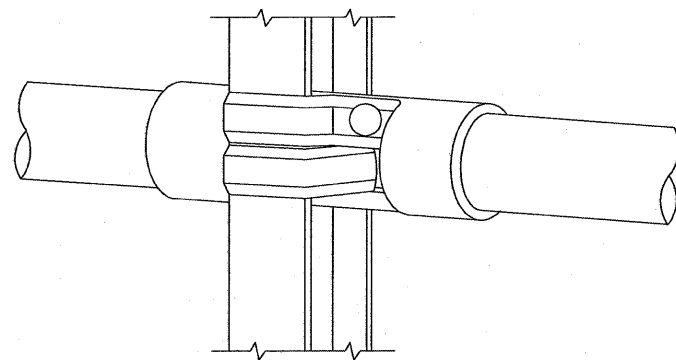
**ELEVATION VIEW OF RETAINING WALL WITH PEDESTRIAN BARRIER TYPE III**



**WIRE MESH FABRIC TO BE BARBED AT THE TOP**

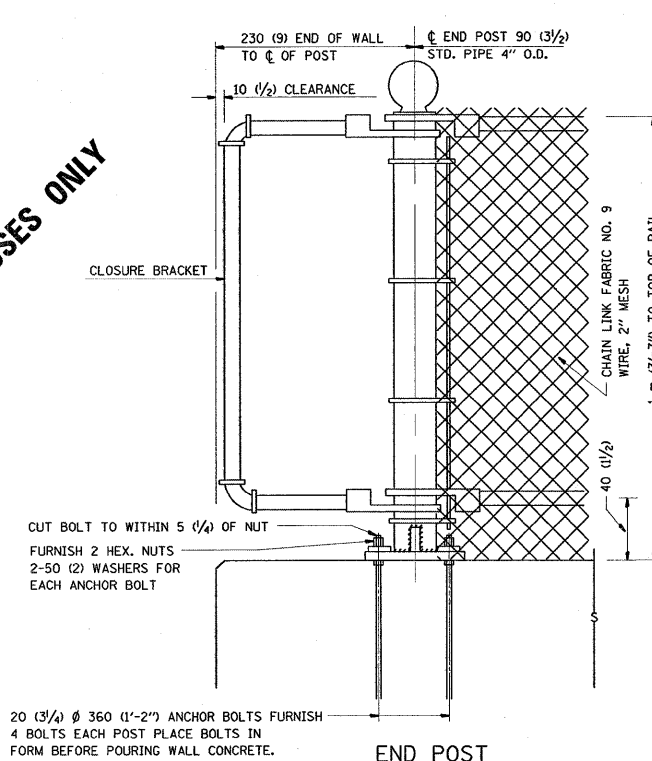


**RAIL FITTING AT END POSTS**



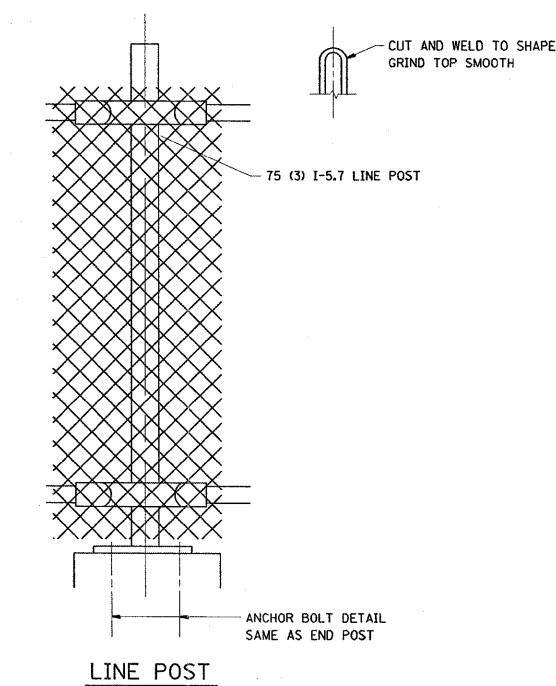
**RAIL FITTING ON SECTION LINE POST**

**FOR INFORMATIONAL PURPOSES ONLY**

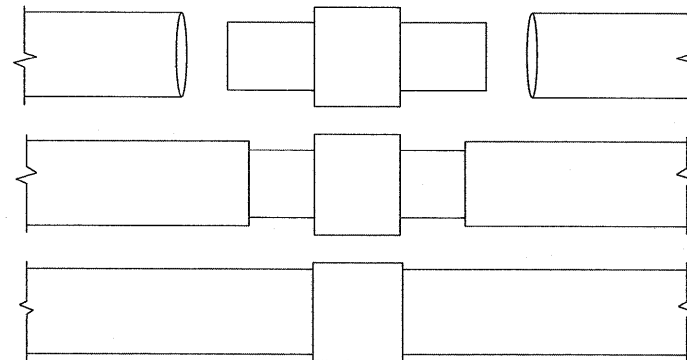


20 (3/4)  $\phi$  360 (1'-2") ANCHOR BOLTS FURNISH 4 BOLTS EACH POST PLACE BOLTS IN FORM BEFORE POURING WALL CONCRETE.

**NOTE:**  
THE COST OF FURNISHING ANCHOR BOLTS, NUTS, & WASHERS TO BE INCIDENTAL

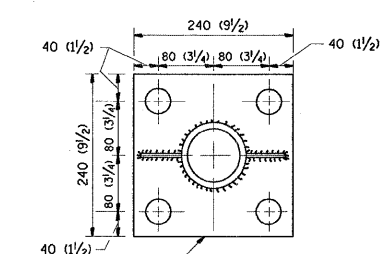


**LINE POST**



**EXPANSION COUPLING DETAIL**

**NOTE:**  
EXP. COUPLING TO APPEAR IN TOP AND BOTTOM RAILS WHERE EVER EXP. JT. APPEARS IN STRUCTURE.



240 (9 1/2) X 80 (3 1/4) X 240 (9 1/2) BASE PLATE  
4-30 (1 1/4)  $\phi$  HOLES FOR END  $\phi$  LINE POSTS

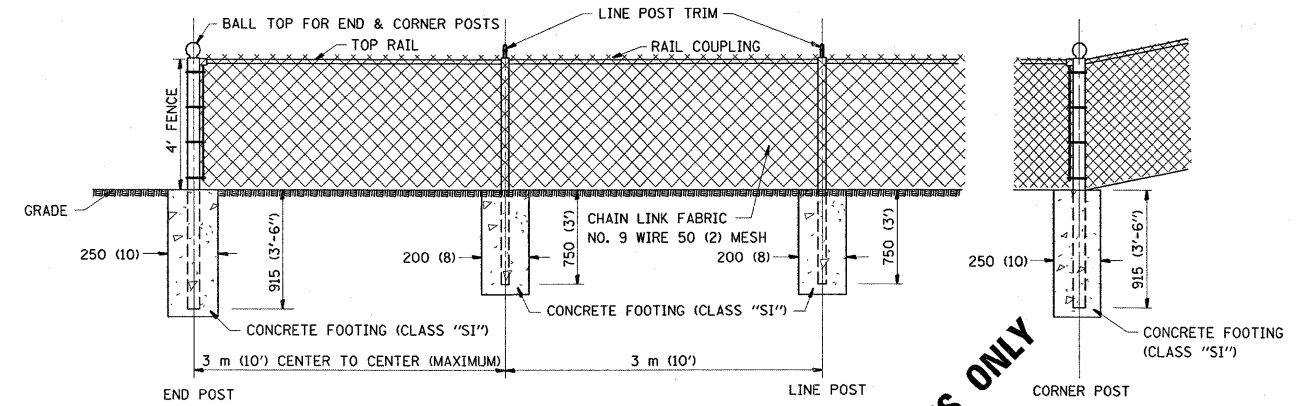
**ANCHOR PLATE DETAILS**

**NOTE:**  
POST, PLATE AND GUSSET ASSEMBLY SHALL BE GALVANIZED AFTER ALL CUTTING, DRILLING, WELDING, AND FABRICATION HAVE BEEN COMPLETED. THE GALVANIZED COATING SHALL CONFORM TO THE REQUIREMENTS OF AASHTO M 120. THE GALVANIZED COATING SHALL NOT BE LESS THAN 610 G/SQ M (2.0 OZ./SQ. FT.) OF SURFACE.

ALL DIMENSIONS ARE IN MILLIMETERS (INCHES) UNLESS OTHERWISE SHOWN.

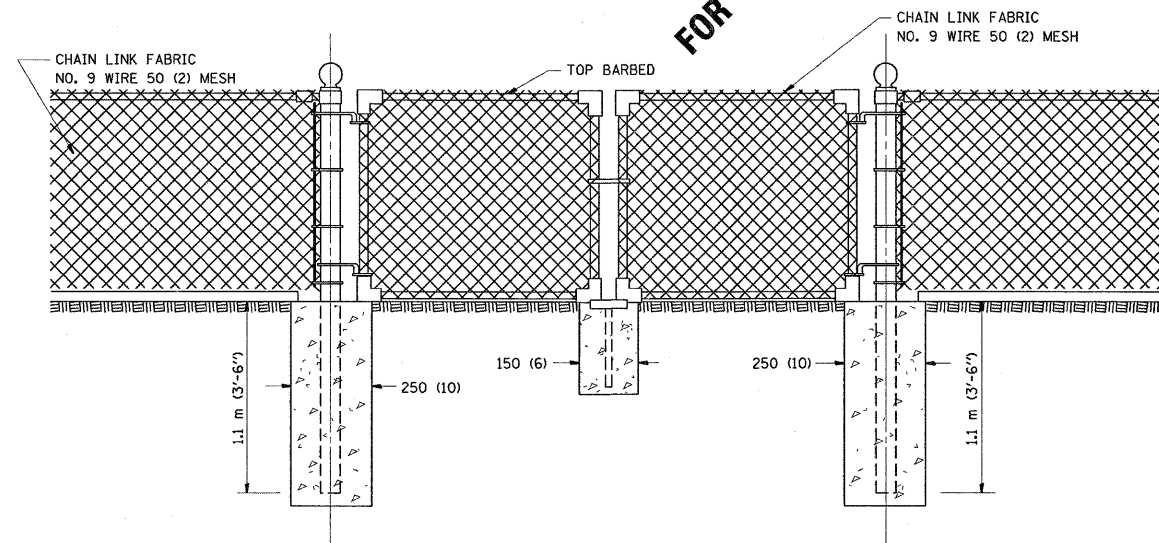
FILE NAME = c:\projects\m147393\mainit_aa.dgn	USER NAME = miduja	DESIGNED -	REVISED -	<b>STATE OF ILLINOIS DEPARTMENT OF TRANSPORTATION</b>	<b>PEDESTRIAN BARRIER TYPE III STD. 10-SS-514 R</b>			F.A. RTE.	SECTION	COUNTY	TOTAL SHEETS	SHEET NO.
PLOT SCALE = 50,000 / IN.	CHECKED -	REVISED -	VAR					2008-060 I	VARIOUS	13	8	
PLOT DATE = 8/29/2008	DATE -	REVISED -	SCALE: SHEET NO. OF SHEETS STA. TO STA.			CONTRACT NO. 60F18						
						FED. ROAD DIST. NO. [ILLINOIS] FED. AID PROJECT						



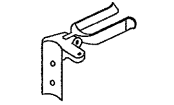


CHAIN LINK FENCE

FOR INFORMATIONAL PURPOSES ONLY



DRIVE GATE 1 m (3'-7") X 3 m (10')



FORK LATCH



GATE REST

ALL DIMENSIONS ARE IN MILLIMETERS (INCHES) UNLESS OTHERWISE SHOWN.

NOTE:

THE CHAIN LINK FENCE AS SHOWN HEREIN SHALL BE CONSTRUCTED AT SUCH LOCATIONS AS SHOWN ON PLANS AND IN ACCORDANCE WITH THE SPECIAL PROVISIONS

THE ENGINEER SHALL ESTABLISH ALL NECESSARY LINE AND GRADE PRIOR TO THE ERECTION OF THE FENCE IN CONFORMANCE WITH THE PLANS

FILE NAME = c:\projects\m147393\maint\_aa.dgn

USER NAME = mdjje

DESIGNED -

REVISED -

DRAWN -

REVISED -

PLOT SCALE = 50.000' / 1IN.

CHECKED -

REVISED -

PLOT DATE = 8/29/2008

DATE -

REVISED -

STATE OF ILLINOIS  
DEPARTMENT OF TRANSPORTATION

CHAIN LINK FENCE  
STD. 10-SS-506 B

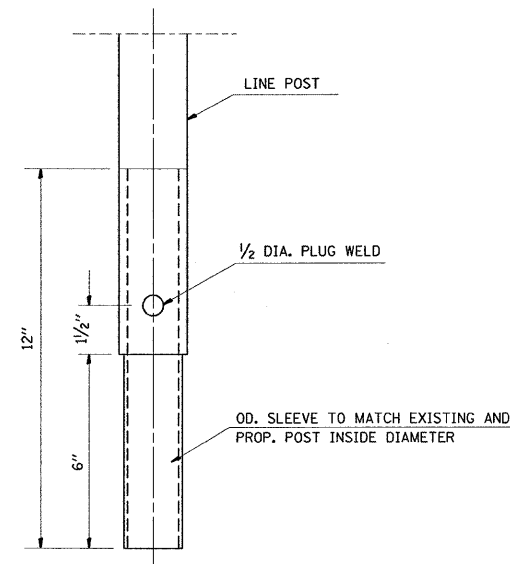
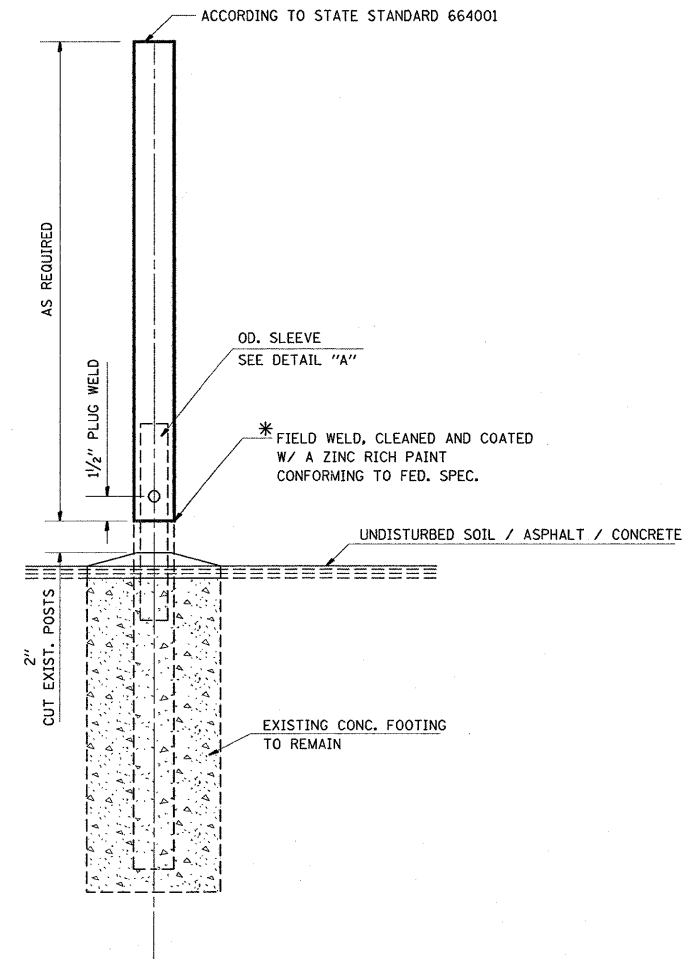
SCALE: SHEET NO. OF SHEETS STA. TO STA.

F.A. RTE.	SECTION	COUNTY	TOTAL SHEETS	SHEET NO.
VAR	2008-060 I	VARIOUS	13	9
CONTRACT NO. 60F18				
FED. ROAD DIST. NO. ILLINOIS FED. AID PROJECT				

GENERAL NOTES:

THIS WORK CONSISTS OF FURNISHING ALL LABOR, MATERIALS, TOOLS AND EQUIPMENT TO REPAIR CHAIN LINK FENCE POST SLEEVE AS SHOWN ON THE PLANS OR AS DIRECTED BY THE ENGINEER, AND IN ACCORDANCE WITH STATE STANDARD 664001.

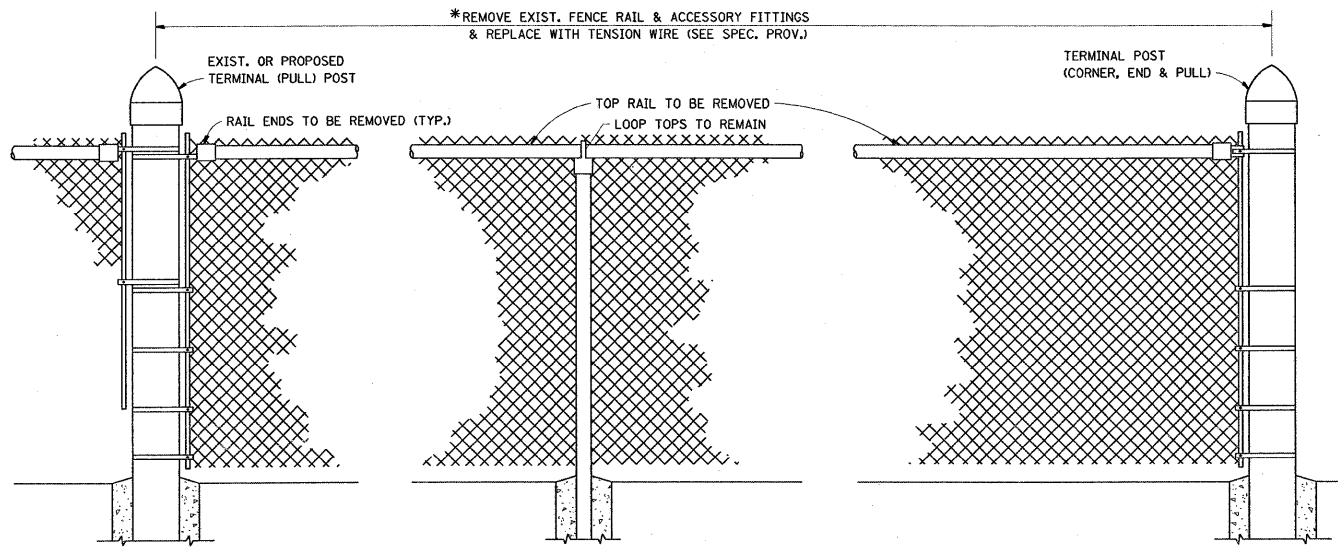
BASIS OF PAVEMENT: THIS WORK SHALL BE PAID FOR AT THE CONTRACT UNIT PRICE EACH FOR "CHAIN LINK FENCE POST SLEEVE REPAIR" WHICH PRICE SHALL BE PAYMENT IN FULL TO COMPLETE THE WORK AS SPECIFIED HEREIN.



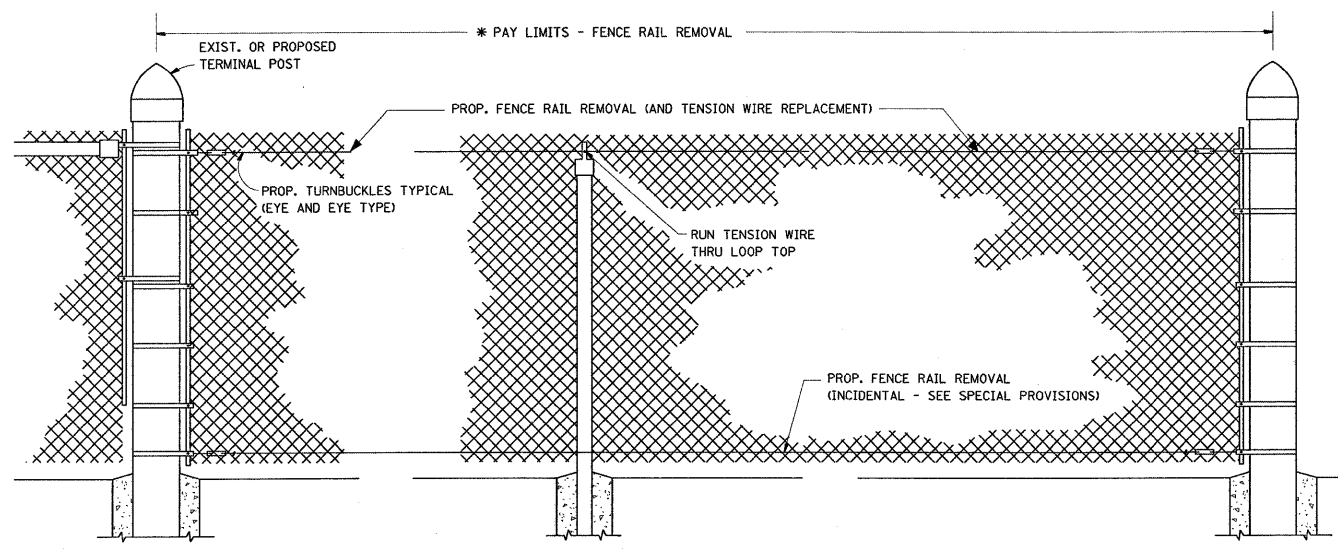
SLEEVE DET. DWG  
DETAIL "A"  
SLEEVE DETAIL

\* THIS WORK SHALL BE INCLUDED IN THE COST OF THE PAY ITEM "CHAIN LINK FENCE POST SLEEVE REPAIR"

FILE NAME = c:\projects\m147393\maint_aa.dgn	USER NAME = midyja	DESIGNED -	REVISED -	<b>STATE OF ILLINOIS DEPARTMENT OF TRANSPORTATION</b>	<b>CHAIN LINK FENCE POST SLEEVE REPAIR DETAIL</b>			F.A. RTE.	SECTION	COUNTY	TOTAL SHEETS	SHEET NO.
	PLOT SCALE = 50.000' / IN.	CHECKED -	REVISED -					VAR	2008-060 I	VARIOUS	13	10
PLOT DATE = 8/29/2008	DATE -	REVISED -	SCALE: SHEET NO. OF SHEETS STA. TO STA.			CONTRACT NO. 60F18						
							FED. ROAD DIST. NO.	ILLINOIS FED. AID PROJECT				



EXIST. CHAIN LINK FENCE WITH TOP RAIL



PROP. CHAIN LINK FENCE WITH "FENCE RAIL REMOVAL"

\* THE ENGINEER IN CHARGE SHALL DETERMINE THE LENGTH OF FENCE RAIL TO BE REMOVED & REPLACED WITH "TENSION WIRE"

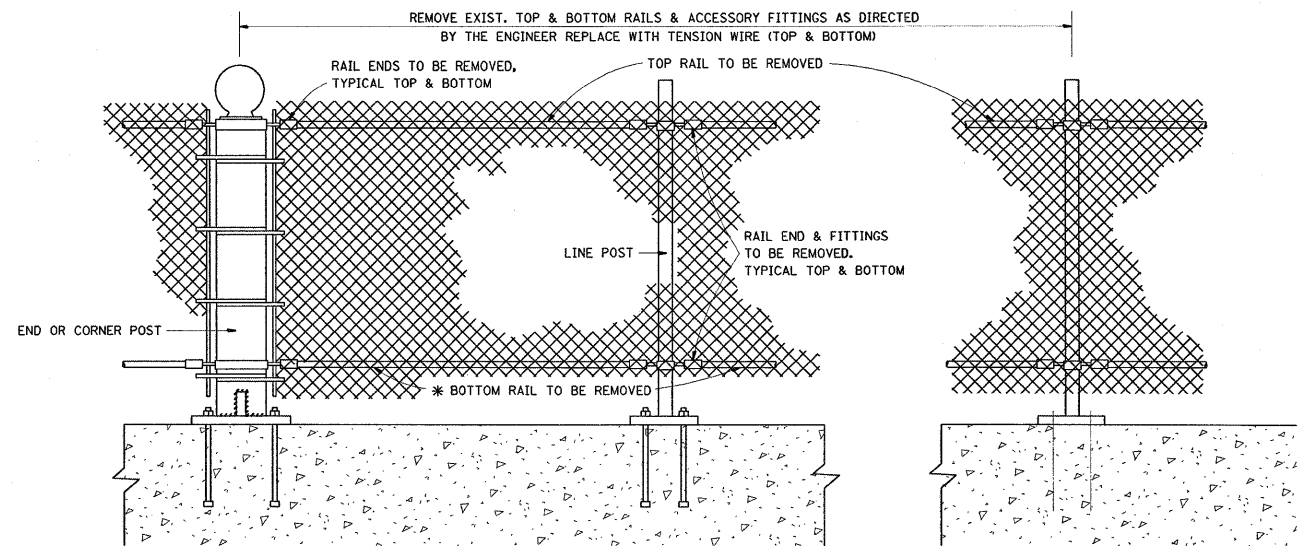
**GENERAL NOTES**

**FENCE RAIL REMOVAL:** THIS ITEM CONSISTS OF REMOVING EXISTING TOP OR BOTTOM RAIL, (DAMAGED OR UNDAMAGED) AND REPLACING WITH TENSION WIRE. BOTTOM TENSION WIRE SHALL BE CONSIDERED INCIDENTAL EXCEPT AT LOCATIONS OF EXISTING BOTTOM RAIL REMOVAL.

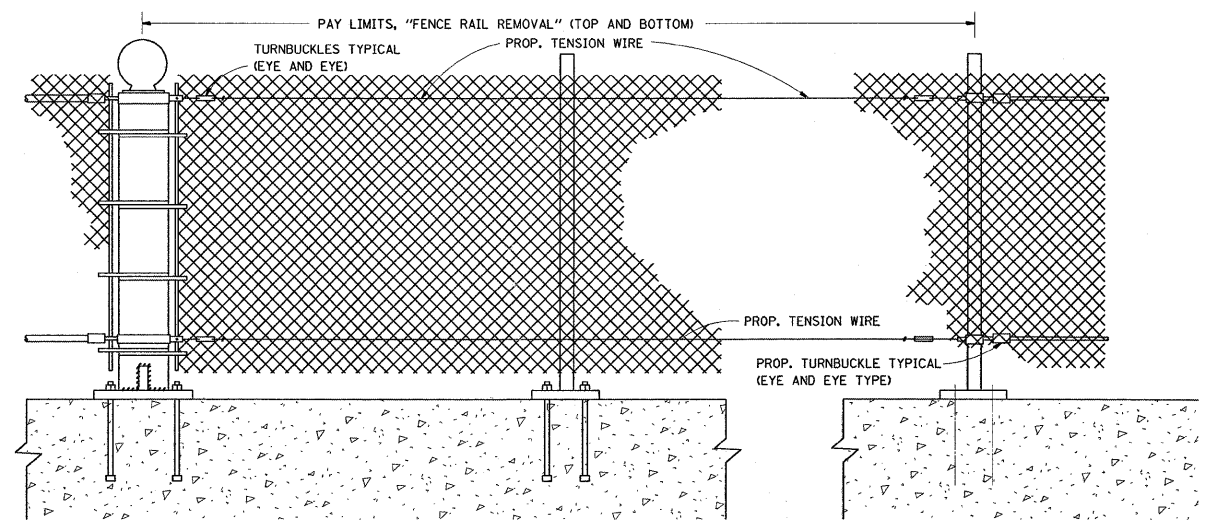
**TENSION WIRE:** THIS ITEM CONSISTS OF INSTALLING TENSION WIRE, TOP OR BOTTOM, WHERE TOP OR BOTTOM RAIL IS NON-EXISTENT, OR WHERE EXISTING DAMAGED TENSION WIRE IS REMOVED AND REPLACED BY NEW TENSION WIRE.

ALL WORK AND MATERIALS SHALL BE IN ACCORDANCE WITH THE PLANS, SPECIAL PROVISIONS, STANDARD SPECIFICATIONS AND STANDARD 664001.

REPLACEMENT OF OTHER FENCE COMPONENT PARTS SHALL BE MEASURED AND PAID FOR SEPARATELY AS DESCRIBED IN THE SPECIAL PROVISIONS.



EXIST. PEDESTRIAN BARRIER TYPE 3 WITH TOP AND BOTTOM RAILS



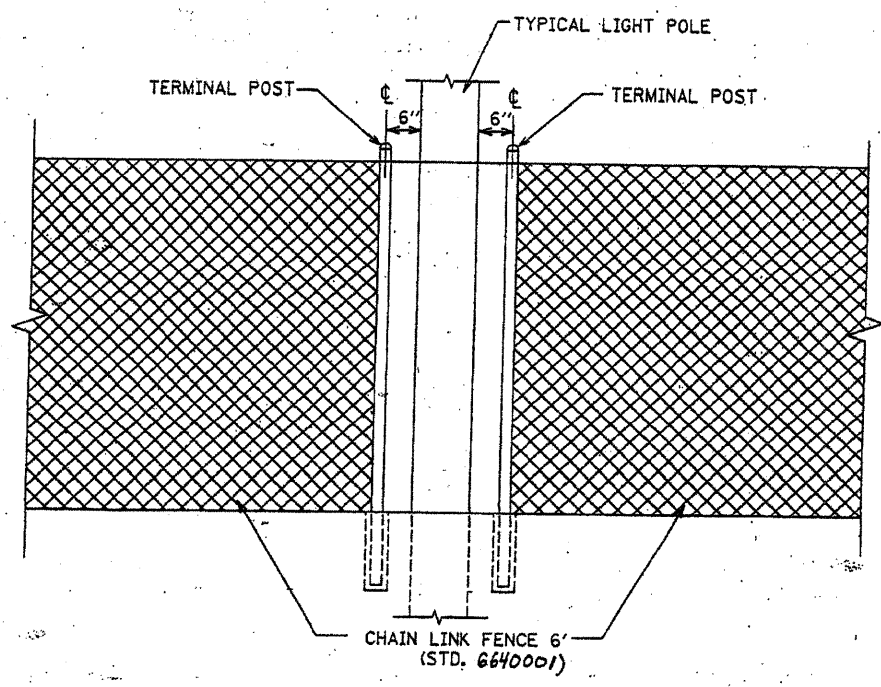
PROP. PEDESTRIAN BARRIER TYPE 3 WITH FENCE RAIL REMOVAL

ALL DIMENSIONS ARE IN MILLIMETERS (INCHES) UNLESS OTHERWISE SHOWN.

FILE NAME = c:\projects\m147393\main_t.a.dgn	USER NAME = mjdjja	DESIGNED -	REVISED -	<b>STATE OF ILLINOIS DEPARTMENT OF TRANSPORTATION</b>	<b>PROPOSED PEDESTRIAN BARRIER AND CHAIN LINK FENCE WITH TENSION WIRE AND FENCE RAIL REMOVAL</b>			F.A. RTE. VAR	SECTION 2008-060 I	COUNTY VARIOUS	TOTAL SHEETS 13	SHEET NO. 11
	PLOT SCALE = 50.000 / IN.	DRAWN -	REVISED -		SCALE:	SHEET NO.	OF	SHEETS	STA.	TO STA.	CONTRACT NO. 60F18	
	PLOT DATE = 8/29/2008	CHECKED -	REVISED -								FED. ROAD DIST. NO. ILLINOIS FED. AID PROJECT	
		DATE -	REVISED -									

F.A. SHEET	SECTION	COUNTY	TOTAL SHEETS	SHEET NO.
VAR 2008-0601		VAR	14	12
STA.	TO STA.			
FED. ROAD DIST. NO. 7	ILLINOIS	FED. AID PROJECT		

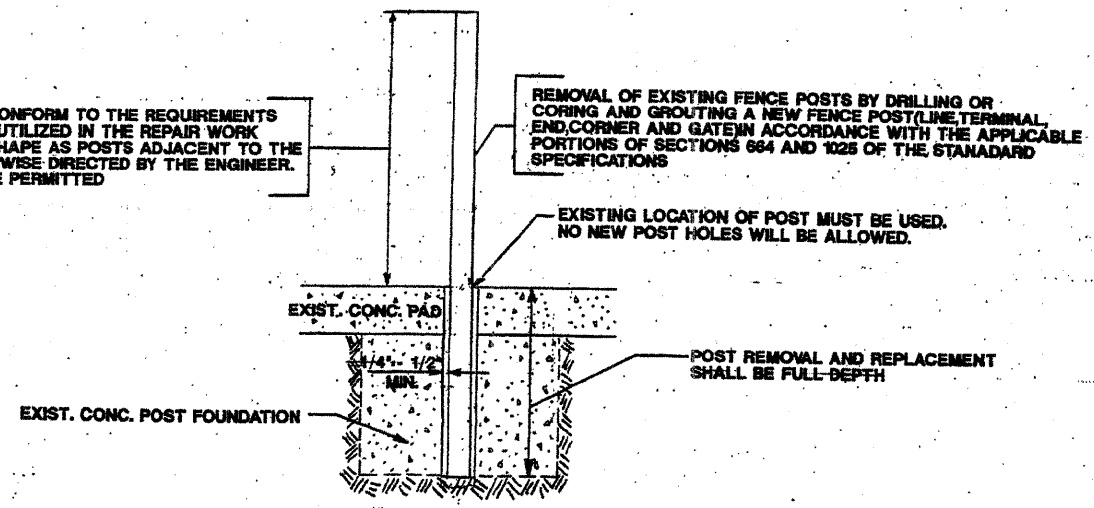
CONTRACT 60P18



FENCE CONFLICT WITH LIGHT POLE

N.T.S.

GALVANIZED POSTS SHALL CONFORM TO THE REQUIREMENTS OF STANDARD 664001 POSTS UTILIZED IN THE REPAIR WORK SHALL BE THE SAME TYPE SHAPE AS POSTS ADJACENT TO THE REPAIR AREA UNLESS OTHERWISE DIRECTED BY THE ENGINEER. NO USED MATERIALS WILL BE PERMITTED



POST REMOVAL AND REPLACEMENT

REVISIONS	
NAME	DATE

ILLINOIS DEPARTMENT OF TRANSPORTATION

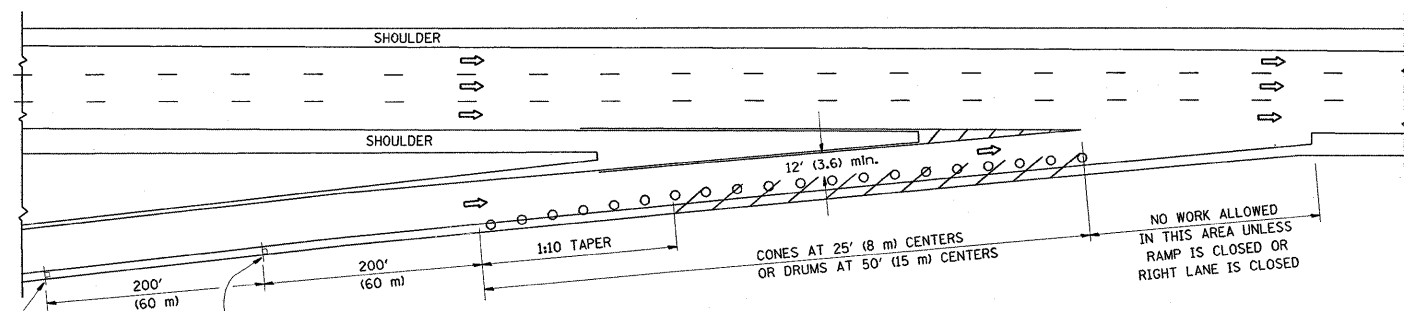
**SPECIAL DETAILS**

SCALE: VERT. HORIZ. DATE

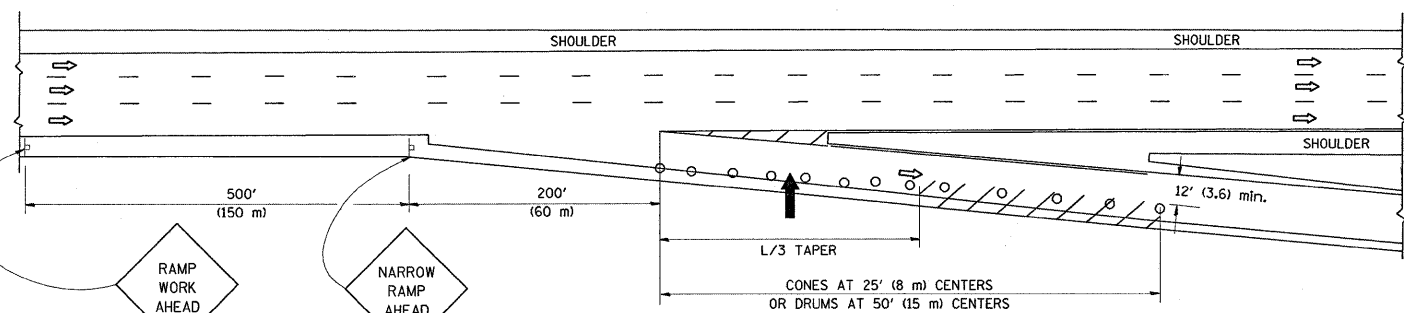
DRAWN BY DESIGNED BY CHECKED BY

PARTIAL RAMP CLOSURE DETAILS

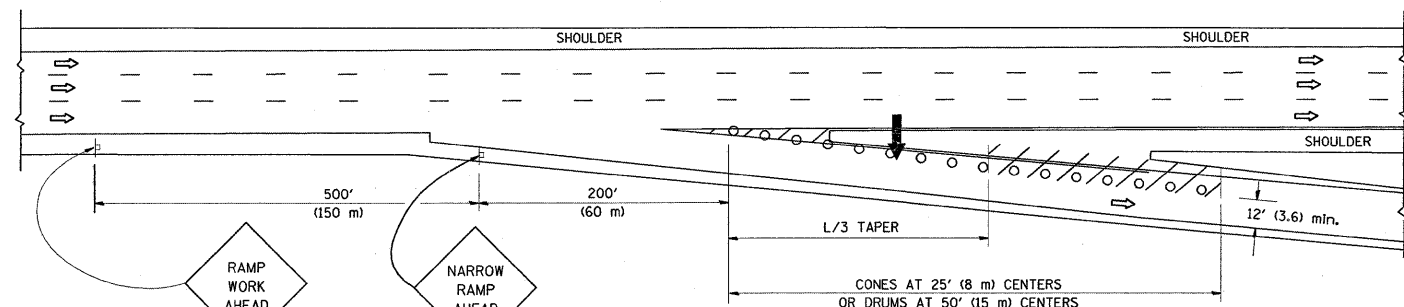
SHOULDER CLOSURE DETAILS



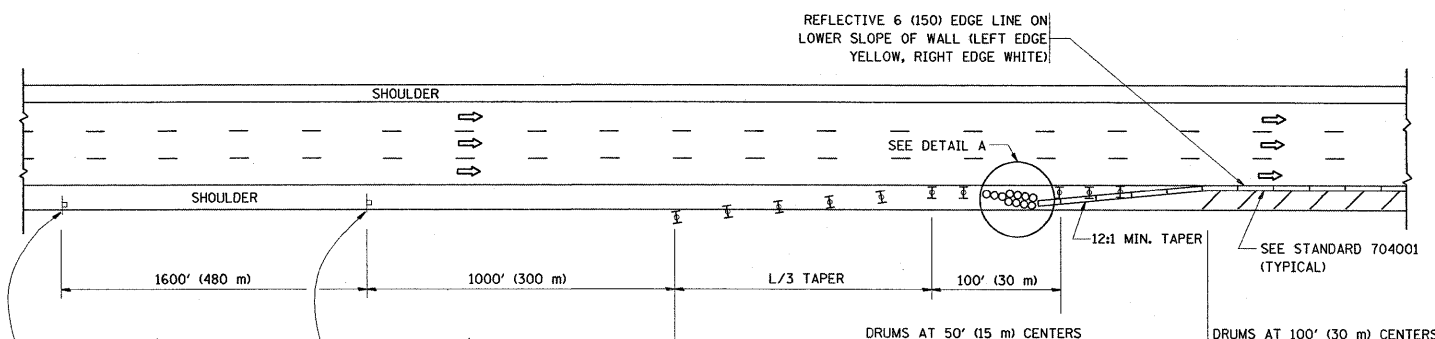
TYPICAL ENTRANCE RAMP



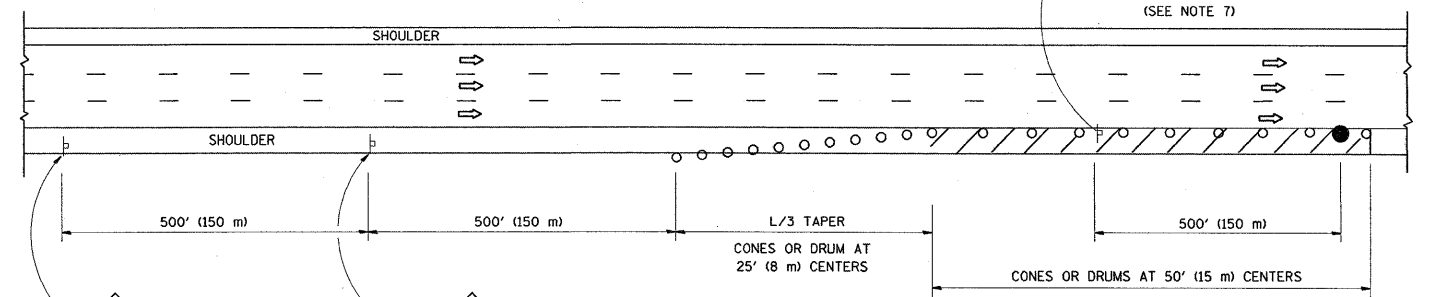
TYPICAL EXIT RAMP



TYPICAL EXIT RAMP



PERMANENT SHOULDER CLOSURE



DAYTIME SHOULDER CLOSURE

THIS DETAIL IS USED WHERE:  
 1. VEHICLES, EQUIPMENT, WORKERS OR THEIR ACTIVITIES ENCR OACH IN AN AREA CLOSER THAN 15' (4.5 m) TO THE EDGE OF PAVEMENT FOR A PERIOD IN EXCESS OF 15 MINUTES.

SYMBOLS

- ARROWBOARD
- WORK AREA
- SIGN ON PORTABLE OR PERMANENT SUPPORT
- FLAGGER WITH CONTROL SIGN
- TYPE II BARRICADE, DRUM OR VERTICAL BARRICADE WITH STEADY BURN MONO-DIRECTIONAL LIGHT
- CONE, DRUM OR BARRICADE

GENERAL NOTES

1. THE "L" DISTANCE EQUALS:  
 SPEED LIMIT                      FORMULAS  
 45 mph (80 km/h)                  METRIC    ENGLISH  
 OR GREATER:                      L=0.65(W)(S)    L=(W)(S)  
 W = WIDTH OF OFFSET IN FEET (METERS)  
 S = NORMAL POSTED SPEED MPH (KM/H)
2. PLASTIC DRUMS WITH HIGH PERFORMANCE REFLECTIVE SHEETING AND STEADY BURNING LIGHTS ARE REQUIRED FOR ALL NIGHTTIME CLOSURES.
3. ALL SIGNS SHALL BE POST MOUNTED IF THE CLOSURE TIME EXCEEDS FOUR DAYS.
4. FLASHING LIGHTS SHALL BE USED DURING THE HOURS OF DARKNESS AND SHALL BE INSTALLED ABOVE THE FIRST TWO SETS OF SIGNS.

5. THE IMPACT ATTENUATOR, TEMPORARY IS NOT REQUIRED WHEN THE TEMPORARY CONCRETE BARRIER WALL IS PROTECTED BY OR IS TIED INTO THE EXISTING GUARDRAIL. IF OFFSET IS LESS THAN 5 FEET USE "TRAFFIC BARRIER TERMINAL, TYPE III, TEMPORARY" DEVICE TO MEET NCHRP350 FOR POSTED SPEED.
6. AUTHORIZATION FROM THE DISTRICT'S BUREAU OF TRAFFIC IS REQUIRED FOR ALL FREEWAY CLOSURES.
7. THE FLAGGER AND FLAGGER SIGN ARE REQUIRED AT THE ABOVE WORK SITES WHEN:
  - a. FOUR OR MORE WORK VEHICLES ENTER THE TRAFFIC LANES IN A ONE HOUR PERIOD.
  - b. THE WORK AVTIVITY REQUIRES FREQUENT ENCR OACHMENT INTO THE LANE OPEN TO TRAFFIC.
 THE FLAGGER SHALL BE STATIONED APPROXIMATELY 100' (30 m) TO 200' (60 m) IN ADVANCE OF THE WORKERS.

ARRAY DESIGN PER MANUFACTURER TO BE NCHRP 350 COMPLIANT FOR POSTED SPEED.

DETAIL "A"  
 IMPACT ATTENUATOR, TEMPORARY  
 (SEE NOTE 5)

ALL DIMENSIONS ARE IN INCHES (MILLIMETERS) UNLESS OTHERWISE SHOWN.

FILE NAME = W:\diststd\22x34\td17.dgn	USER NAME = mcdjja	DESIGNED -	REVISED - J.A.F. 12-02	<b>STATE OF ILLINOIS DEPARTMENT OF TRANSPORTATION</b>	<b>TRAFFIC CONTROL DETAILS FOR FREEWAY SHOULDER CLOSURES AND PARTIAL RAMP CLOSURES</b>			F.A. RTE. VAR.	SECTION 2008-060 I TG-17	COUNTY VARIOUS	TOTAL SHEETS 13	SHEET NO. 13
PLDT SCALE = 50.0000' / 1"	CHECKED -	REVISED - D.W.S.	REVISED - 04-03		SCALE: NONE	SHEET NO. 1	OF 1 SHEETS	STA.	TO STA.	CONTRACT NO. 60F18		
PLDT DATE = 8/29/2008	DATE - 11-96	REVISED - J.A.F. 12-06	REVISED - S.P.B. 01-07		FED. ROAD DIST. NO. 1			ILLINOIS FED. AID PROJECT				