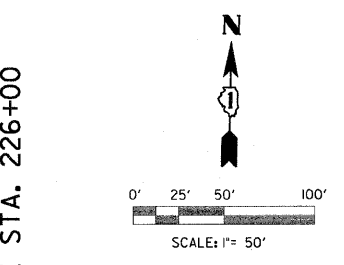
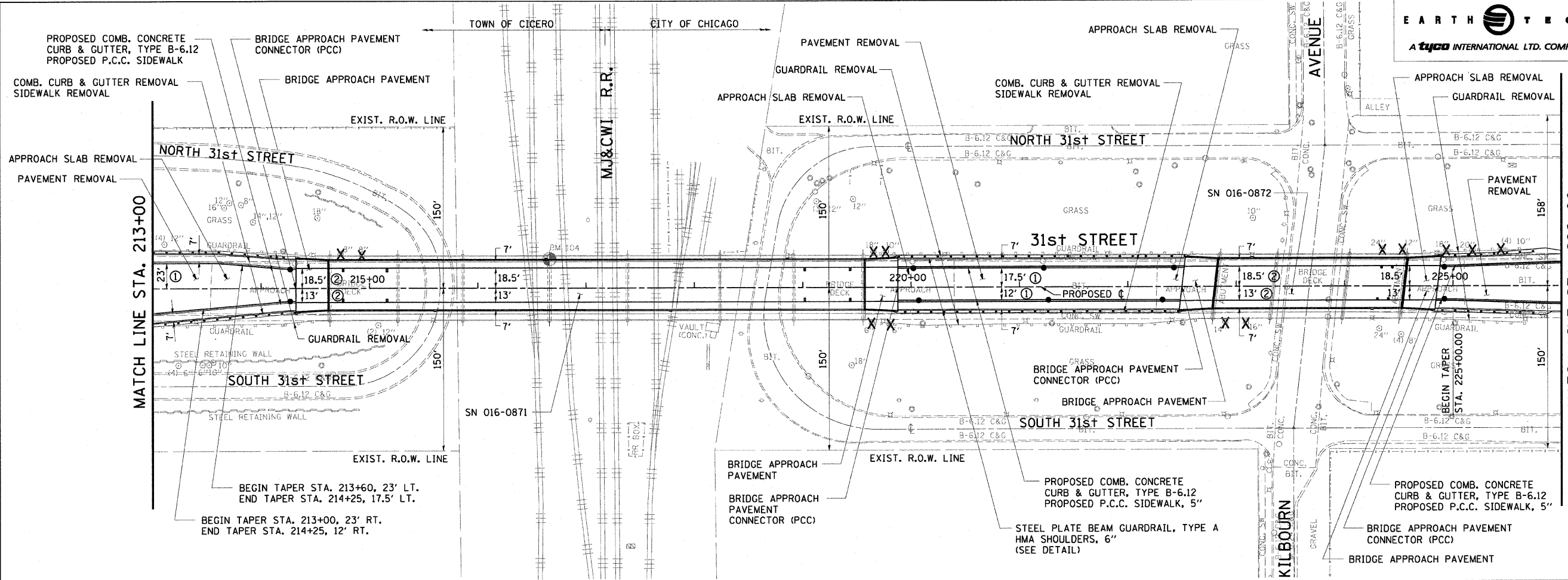


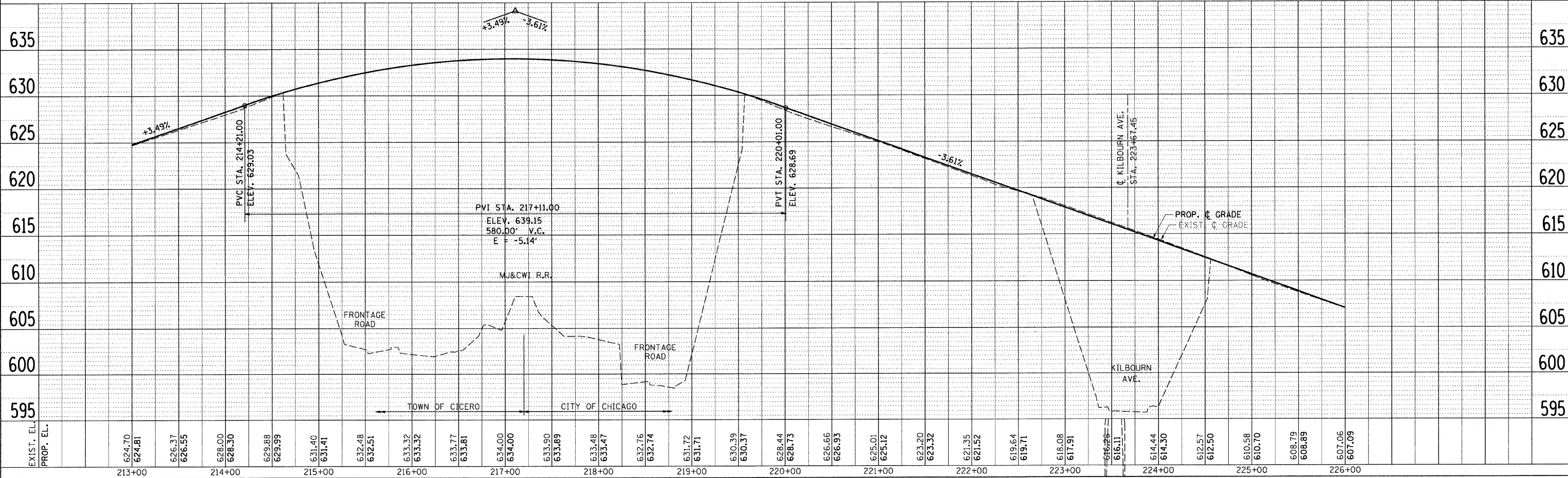
F.A.U. RTE.	SECTION	COUNTY	TOTAL SHEETS	SHEET NO.
1463	1010.1B	COOK	171	26
STA. 213+00		TO STA. 226+00		
FED. ROAD DIST. NO.		ILLINOIS FED. AID PROJECT		
CONTRACT NO. 62196				

DATE	BY

DATE	BY



- NOTES:**
- ① DIMENSIONS FOR HMA SURFACE REMOVAL AND PAVEMENT RESURFACING ARE SHOWN FROM CENTERLINE TO EDGE OF PAVEMENT.
 - ② DIMENSIONS FOR HMA SURFACE REMOVAL AND PAVEMENT RESURFACING ARE SHOWN FROM CENTERLINE TO FACE OF CURB.
 - ③ PROPOSED RADII GEOMETRY ARE SHOWN TO THE FACE OF CURB.
 - ④ UNLESS OTHERWISE NOTED, ALL OTHER ROADWAY DIMENSIONS ARE SHOWN TO EDGE OF PAVEMENT.
- X TREE REMOVAL



31st STREET - ROADWAY PLAN AND PROFILE