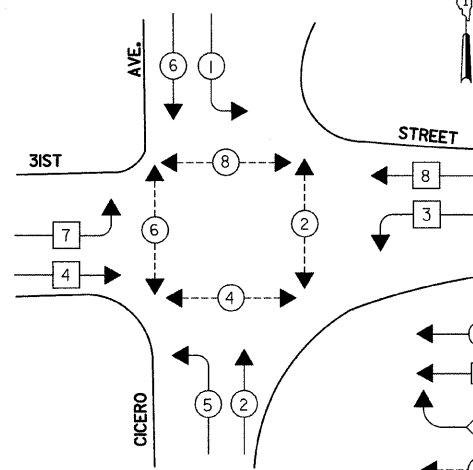


CONTRACT#62196

**CONTROLLER SEQUENCE**

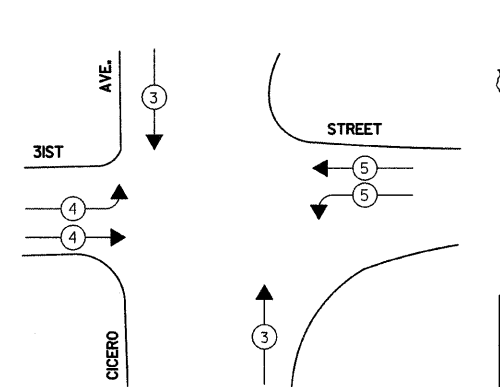


**PHASE DESIGNATION DIAGRAM  
CONSTRUCTION STAGES 1, 2 AND 3**

**LEGEND**

- ⊙ → DUAL ENTRY PHASE
- ⊠ → SINGLE ENTRY PHASE
- ◊ O.L. → OVERLAP
- ⊙ → PEDESTRIAN PHASE
- \* → NUMBER REFERS TO ASSOCIATED PHASE

**EMERGENCY VEHICLE PREEMPTION SEQUENCE**

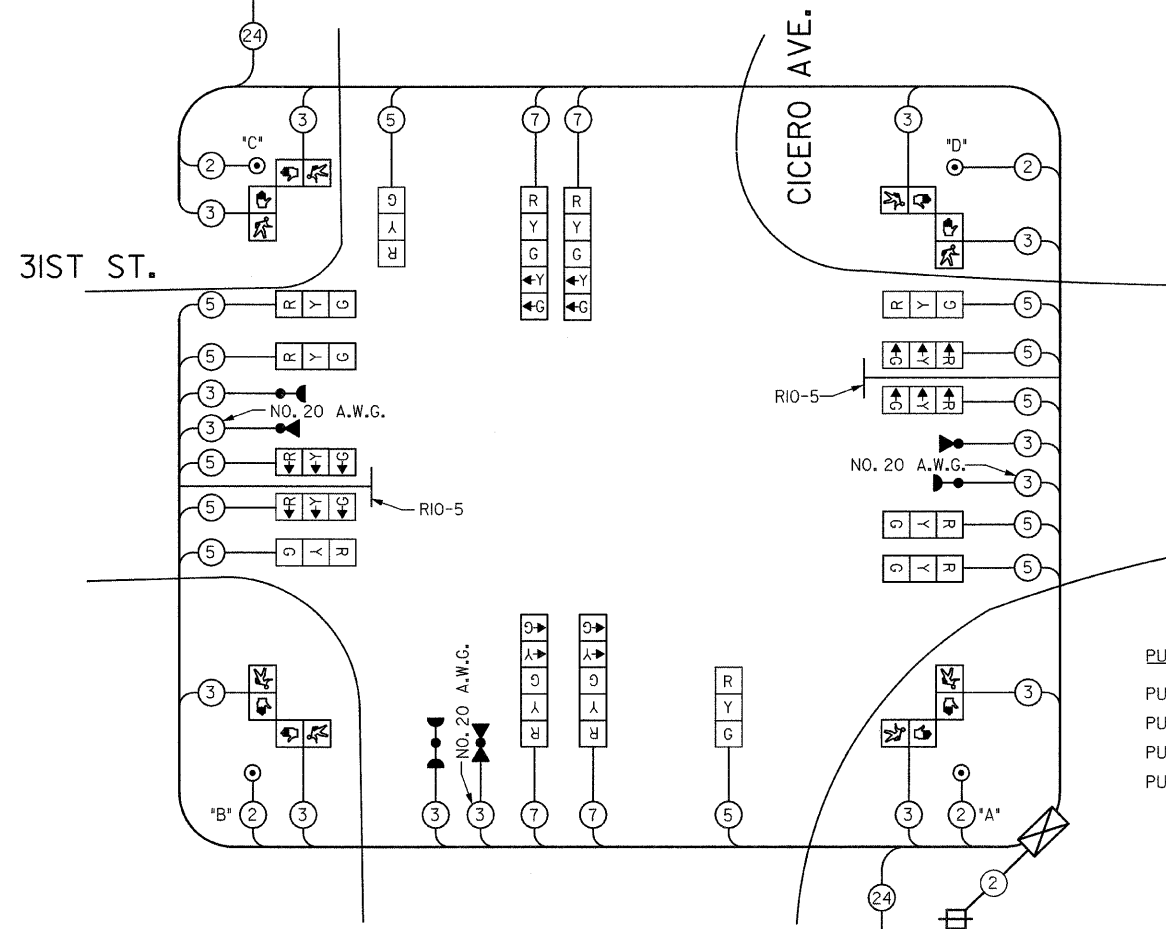


**CONSTRUCTION STAGES 1, 2, AND 3**

| PROPOSED EMERGENCY VEHICLE PREEMPTORS |     |     |     |
|---------------------------------------|-----|-----|-----|
| EMERGENCY VEHICLE PREEMPTOR           | 3   | 4   | 5   |
| MOVEMENT                              | ↓ ↑ | → ← | ← → |

**TEMPORARY CABLE DIAGRAM LEGEND**

- ⊠ TEMPORARY TRAFFIC SIGNAL SECTION OR PEDESTRIAN SIGNAL SECTION 12" (300mm)
- ⊠ TEMPORARY CONTROLLER CABINET
- ⊠ TEMPORARY SERVICE INSTALLATION
- ⑤ INDICATES NUMBER OF CONDUCTORS IN CABLE. ALL CONDUCTORS TO BE NUMBER 14 AWG WIRE UNLESS OTHERWISE NOTED.
- ⊠ EMERGENCY VEHICLE LIGHT DETECTOR
- ⊠ CONFIRMATION BEACON
- ⊠ VEHICLE DETECTOR, INDUCTION LOOP
- ⊠ PEDESTRIAN PUSHBUTTON DETECTOR
- ⊠ 12" (300mm) PEDESTRIAN SIGNAL SECTION
- ⊠ MICROWAVE VEHICLE SENSOR
- ⊠ LEFT ON GREEN ARROW ONLY (RIO-5) SIGN



**TEMPORARY CABLE PLAN**  
NOT TO SCALE

**PUSH-BUTTON NOTES**

- PUSH-BUTTON "A" SHALL PLACE A CALL IN PHASES 2 AND 4
- PUSH-BUTTON "B" SHALL PLACE A CALL IN PHASES 4 AND 6
- PUSH-BUTTON "C" SHALL PLACE A CALL IN PHASES 6 AND 8
- PUSH-BUTTON "D" SHALL PLACE A CALL IN PHASES 2 AND 8

LEFT ON GREEN ARROW ONLY

RIO-5  
24" X 30"

THE CONTRACTOR SHALL REMOVE THE EXISTING EMERGENCY VEHICLE PRIORITY SYSTEM DETECTOR UNITS, INCLUDING THE CONFIRMATION BEACONS, AND THE PHASING UNIT FROM THE EXISTING TRAFFIC SIGNAL INSTALLATION, STORE IT IN A SAFE MANNER, AND INSTALL THEM ON THE NEW TRAFFIC SIGNAL INSTALLATION AS SHOWN IN THE PLAN AND AS DIRECTED BY THE ENGINEER.

THE TRAFFIC SIGNAL CONTROL EQUIPMENT FOR THIS PROJECT SHALL BE "ECONOLITE" TO MATCH THE EXISTING ADJACENT SYSTEM.

| I.D.O.T.<br>TRAFFIC SIGNAL INSTALLATION<br>ELECTRICAL SERVICE REQUIREMENTS |          |         |     |             | TOTAL WATTAGE  |
|--|----------|---------|-----|-------------|----------------|
| TYPE   | NO LAMPS | INCAND. | LED | % OPERATION |                |
| SIGNAL (RED)   | 16       | 135     | 17  | 0.50        | 1080.0         |
| (YELLOW)   | 16       | 135     | 25  | 0.25        | 540.0          |
| (GREEN)  | 16       | 135     | 15  | 0.25        | 540.0          |
| ARROW  | 8        | 135     | 12  | 0.10        | 108.0          |
| PED. SIGNAL  | 8        | 90      | 25  | 1.00        | 720.0          |
| CONTROLLER   | 1        | 100     | 100 | 1.00        | 100.0          |
| ILLUM. SIGN  |          |         |     | 0.05        |                |
| ENERGY COSTS TO:   |          |         |     |             | TOTAL = 3088.0 |

ILLINOIS DEPARTMENT OF TRANSPORTATION  
201 WEST CENTER COURT  
SCHLAUBURG, ILLINOIS 60196-1096

ENERGY SUPPLY CONTACT: JOSEPH CRISCIONE  
PHONE: (630) 691-4356  
COMPANY: COMED

| REVISIONS |      |
|-----------|------|
| NAME      | DATE |
|           |      |
|           |      |
|           |      |

8/29/08

ILLINOIS DEPARTMENT OF TRANSPORTATION  
TEMPORARY CABLE PLAN  
PHASE DESIGNATION DIAGRAM AND  
EMERGENCY VEHICLE PREEMPTION SEQUENCE  
31ST STREET AT  
ILLINOIS ROUTE 50 (CICERO AVENUE)

SCALE: N.T.S. DRAWN BY: BB, MAE  
DESIGNED BY: PKG  
DATE: 08/01/2008 CHECKED BY: PKG/RMM

**ga** GANDHI AND ASSOCIATES, INC.  
ENGINEERS AND PLANNERS  
6035 N. NORTHWEST HIGHWAY  
SUITE 306  
CHICAGO, ILLINOIS 60631 TEL: (773) 774-5910