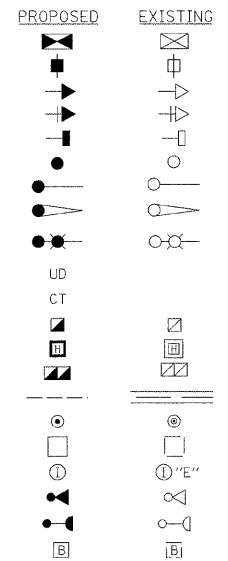
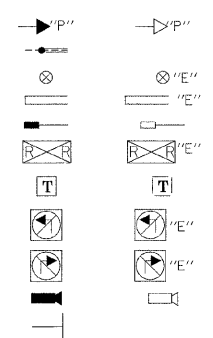


**TRAFFIC SIGNAL LEGEND**

- CONTROLLER  
 SERVICE INSTALLATION  
 SIGNAL HEAD  
 SIGNAL HEAD WITH BACKPLATE  
 SIGNAL HEAD, PEDESTRIAN  
 SIGNAL POST  
 MAST ARM ASSEMBLY AND POLE, STEEL  
 MAST ARM ASSEMBLY AND POLE, ALUMINUM  
 COMBINATION MAST ARM ASSEMBLY AND POLE,  
 STEEL WITH LUMINAIRE  
 UNIT DUCT  
 COMMON TRENCH  
 HANDHOLE  
 HEAVY DUTY HANDHOLE  
 DOUBLE HANDHOLE  
 GALVANIZED STEEL CONDUIT IN TRENCH OR PUSHED  
 PEDESTRIAN PUSHBUTTON DETECTOR  
 DETECTOR LOOP  
 CAST IRON JUNCTION BOX  
 EMERGENCY VEHICLE SYSTEM DETECTOR  
 CONFIRMATION BEACON  
 UNINTERRUPTABLE POWER SUPPLY(UPS)

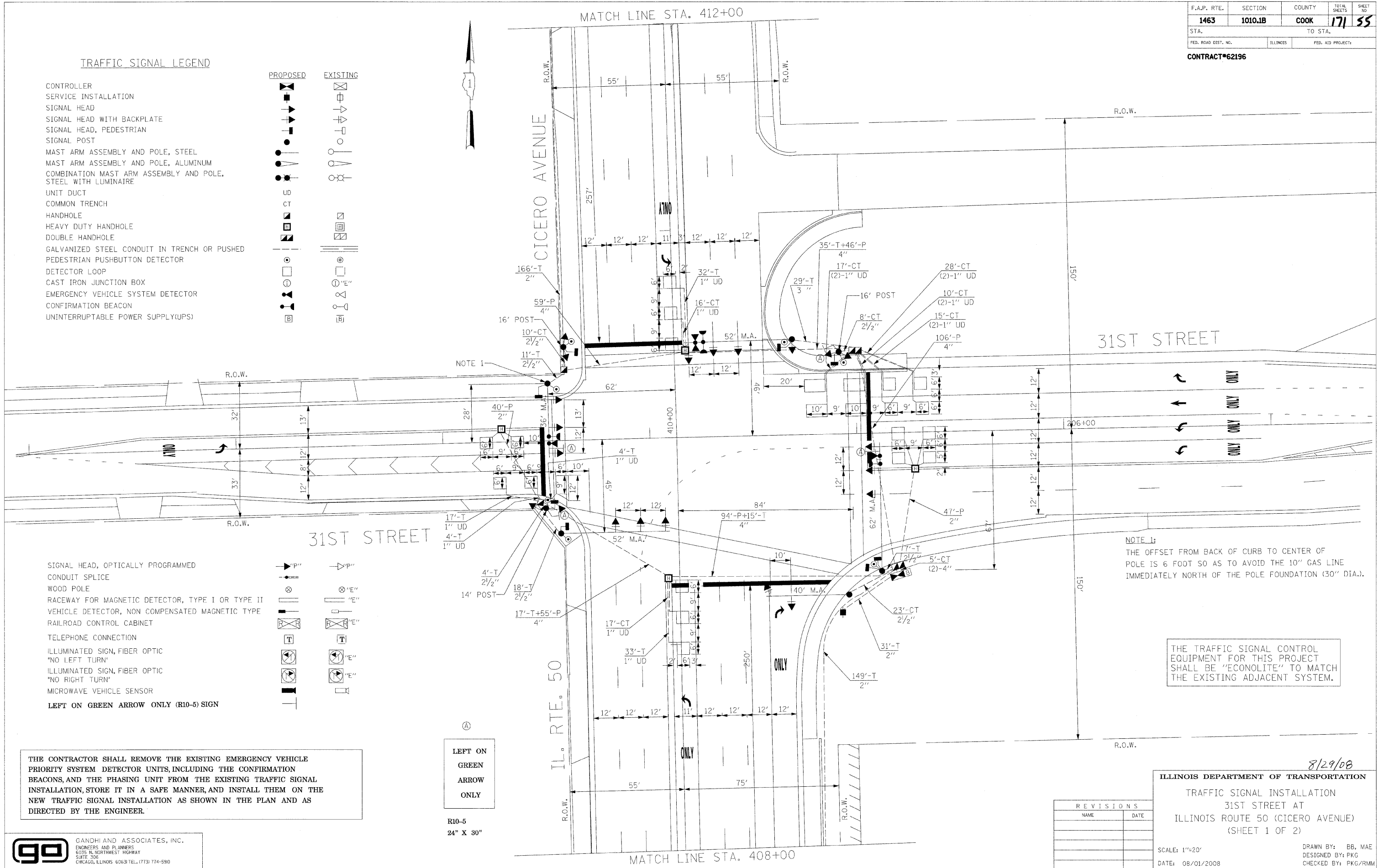


- SIGNAL HEAD, OPTICALLY PROGRAMMED  
 CONDUIT SPLICE  
 WOOD POLE  
 RACEWAY FOR MAGNETIC DETECTOR, TYPE I OR TYPE II  
 VEHICLE DETECTOR, NON COMPENSATED MAGNETIC TYPE  
 RAILROAD CONTROL CABINET  
 TELEPHONE CONNECTION  
 ILLUMINATED SIGN, FIBER OPTIC  
 "NO LEFT TURN"  
 ILLUMINATED SIGN, FIBER OPTIC  
 "NO RIGHT TURN"  
 MICROWAVE VEHICLE SENSOR  
 LEFT ON GREEN ARROW ONLY (R10-5) SIGN



THE CONTRACTOR SHALL REMOVE THE EXISTING EMERGENCY VEHICLE PRIORITY SYSTEM DETECTOR UNITS, INCLUDING THE CONFIRMATION BEACONS, AND THE PHASING UNIT FROM THE EXISTING TRAFFIC SIGNAL INSTALLATION, STORE IT IN A SAFE MANNER, AND INSTALL THEM ON THE NEW TRAFFIC SIGNAL INSTALLATION AS SHOWN IN THE PLAN AND AS DIRECTED BY THE ENGINEER.

LEFT ON GREEN ARROW ONLY  
 R10-5  
 24" X 30"



NOTE 1:  
 THE OFFSET FROM BACK OF CURB TO CENTER OF POLE IS 6 FOOT SO AS TO AVOID THE 10" GAS LINE IMMEDIATELY NORTH OF THE POLE FOUNDATION (30" DIA.).

THE TRAFFIC SIGNAL CONTROL EQUIPMENT FOR THIS PROJECT SHALL BE "ECONOLITE" TO MATCH THE EXISTING ADJACENT SYSTEM.

| REVISIONS |      |
|-----------|------|
| NAME      | DATE |
|           |      |
|           |      |
|           |      |

ILLINOIS DEPARTMENT OF TRANSPORTATION  
 TRAFFIC SIGNAL INSTALLATION  
 31ST STREET AT  
 ILLINOIS ROUTE 50 (CICERO AVENUE)  
 (SHEET 1 OF 2)

SCALE: 1"=20'  
 DATE: 08/01/2008  
 DRAWN BY: EB, MAE  
 DESIGNED BY: PKG  
 CHECKED BY: PKG/RMM

**GO** GANDHI AND ASSOCIATES, INC.  
 ENGINEERS AND PLANNERS  
 6035 N. NORTHWEST HIGHWAY  
 SUITE 306  
 CHICAGO, ILLINOIS 60631 TEL: (773) 774-5980