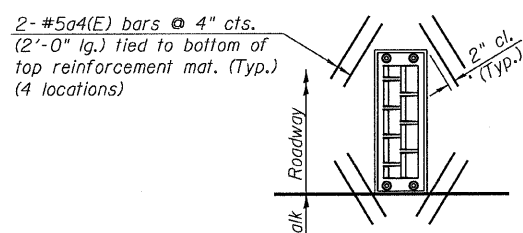
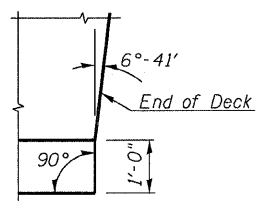


DECK PLAN

* Order a(E), a1(E), a2(E), & a3(E) bars full length. Cut to fit skew & use remainder of bars in other end.



DETAIL 1
(Scupper DS-33 Reinforcement)



DETAIL A

TYP. LAP SPLICE

Bar	Lap
#5	2'-2"
#6	2'-7"

- Notes:
1. Work this sheet with Sheets S8 thru S11.
 2. See Sheet S12 for expansion joint details.
 3. See Sheet S13 for drainage scupper details.
 4. See Sheet S14 for bridge fence railing details.
 5. Bar indicated thus 20x3-#5, etc. indicates 20 lines of bars with 3 lengths per line.
 6. Cut longitudinal reinforcement to clear scuppers.
 7. See Sheet S11 for Section A-A.

REVISIONS	
NAME	DATE

ILLINOIS DEPARTMENT OF TRANSPORTATION
SUPERSTRUCTURE PLAN
31 ST. STREET OVER KILBOURN AVE.
F.A.U. ROUTE 1463 SECTION 159-1010.1B
COOK COUNTY
STATION 223+67.45
STR. NO. 016-0872

SCALE: VERT. _____
HORIZ. _____
DATE JANUARY 2008

DRAWN BY JHR
CHECKED BY CLS