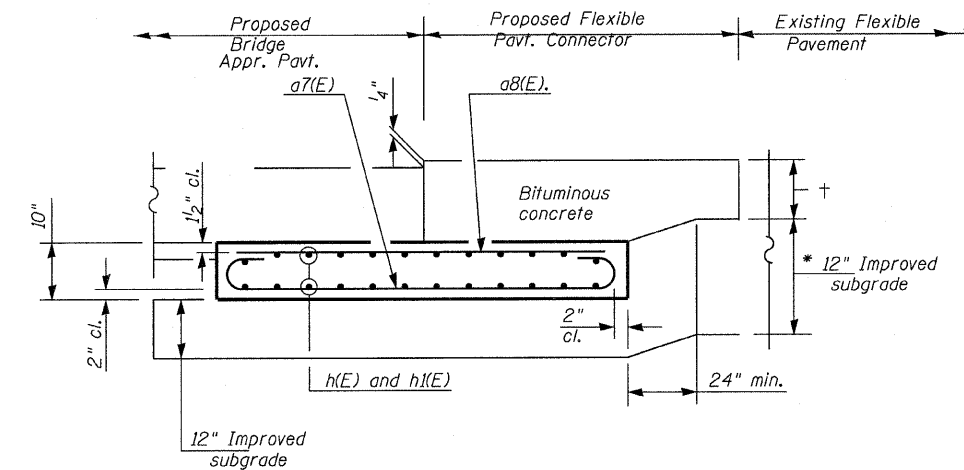


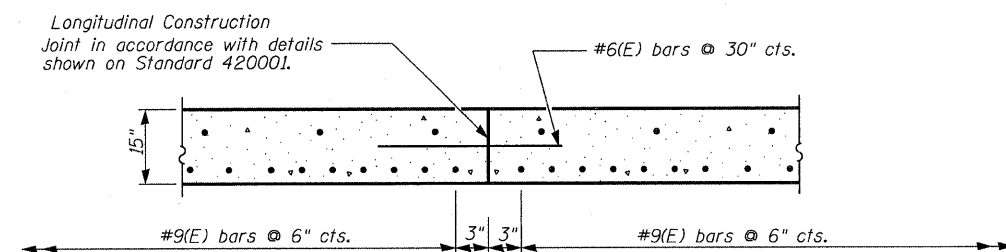
**SECTION A-A**

(1) Stagger #9a5(E) bars as shown on plan - full width



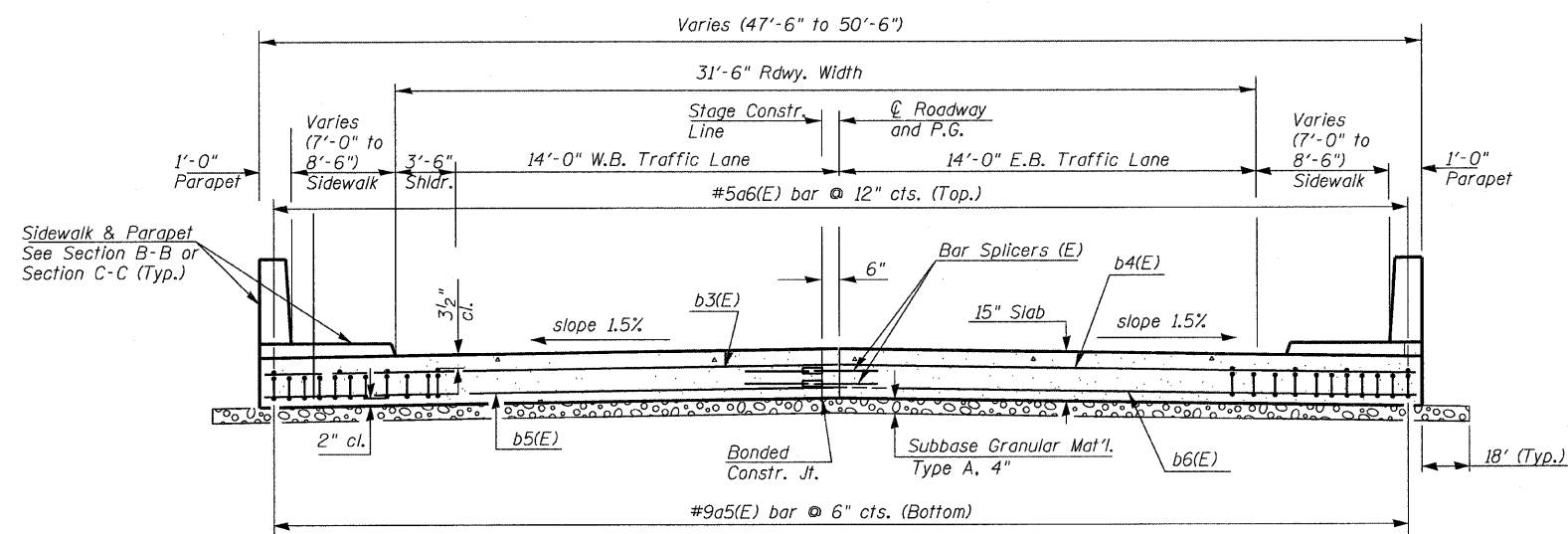
**SECTION G-G - FLEXIBLE PAVEMENT**

(Showing reinforcement)



**OPTIONAL LONGITUDINAL CONSTRUCTION JOINT**

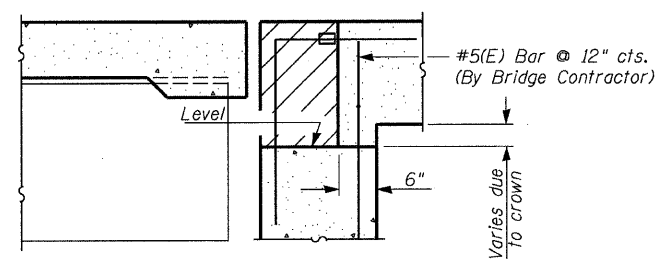
As approved by the Engineer, the Contractor may elect to reduce the widths of pour by use of the Optional Longitudinal Construction Joint shown. Joints shall be located at the edge of a traffic lane.



**SECTION D-D**

(See Plan for Dimensions not shown)  
 (Looking East)

Sidewalk & Parapet See Section B-B or Section C-C (Typ.)



**SECTION E-E**

**NOTES:**  
 Reinforcement bars designated (E) shall be epoxy coated.  
 \* Cost included with Bridge Approach Pavement (Special)

REVISIONS	
NAME	DATE

ILLINOIS DEPARTMENT OF TRANSPORTATION  
**APPROACH PAVEMENT DETAILS**  
 31 ST. STREET OVER M.J. & C.W.I.R.R.  
 F.A.U. ROUTE 1463 SECTION 159-1010.1B  
 COOK COUNTY  
 STATION 217+09.66  
 STR. NO. 016-0871

SCALE: VERT.      DRAWN BY    JHR  
 HORIZ.              DATE              JANUARY 2008      CHECKED BY    CLS