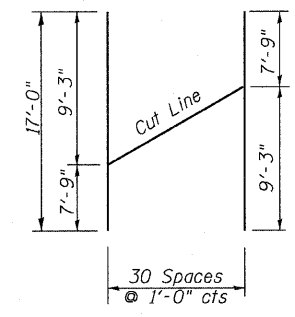


BARS b3(E) thru b6(E)
 CUTTING DIAGRAM
 Order Bar full length. Cut Bars as shown on Cutting Diagram to fit skew and use the remainder of Bars at other sidewalk.



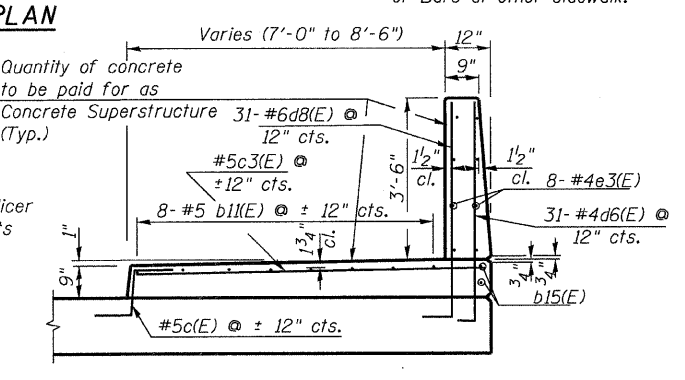
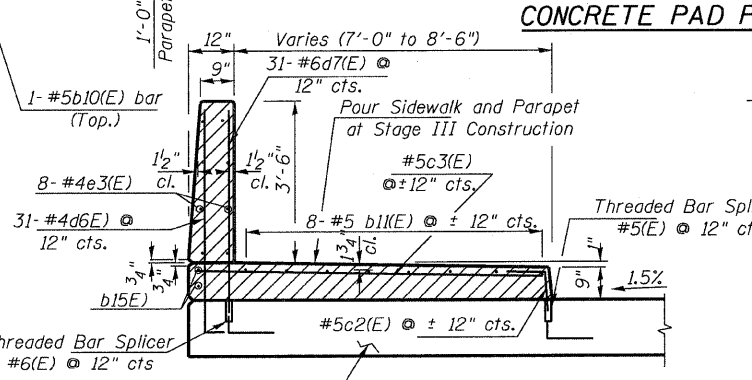
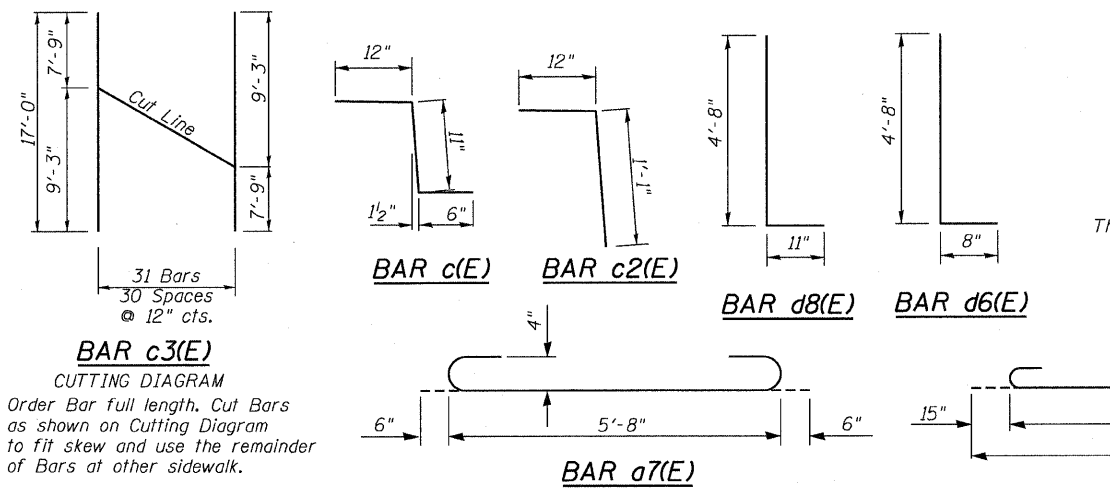
BARS c3(E)
 CUTTING DIAGRAM
 Order Bar full length. Cut Bars as shown on Cutting Diagram to fit skew and use the remainder of Bars at other sidewalk.

BILL OF MATERIAL
 (For 2 Approach Slabs including Parapets & Sidewalks)

Bar	No.	Size	Length	Shape
a5(E)	208	#9	29'-6"	U
a6(E)	106	#5	29'-6"	U
a7(E)	104	#4	6'-8"	U
a8(E)	104	#4	5'-8"	U
b3(E)	7	#4	53'-0"	—
b4(E)	7	#4	44'-0"	—
b5(E)	28	#5	53'-0"	—
b6(E)	28	#5	44'-0"	—
b7(E)	8	#5	25'-9"	—
b8(E)	8	#5	27'-3"	—
b9(E)	8	#5	21'-3"	—
b10(E)	8	#5	22'-9"	—
b11(E)	40	#5	29'-9"	—
c(E)	62	#5	2'-5"	—
c2(E)	62	#5	7'-9"	—
c3(E)	62	#5	17'-0"	—
d6(E)	124	#4	5'-4"	—
d7(E)	62	#6	4'-10"	—
d8(E)	62	#6	5'-7"	—
e3(E)	32	#4	29'-9"	—
h(E)	48	#5	27'-3"	—
h1(E)	48	#5	22'-9"	—
Bridge Approach Pavement (Special)		Sq. Yd.	327	

NOTES:
 THICKNESS-"t"=Thickness of Pavement. See Standard 421001 for reinforcement details not shown. See Standard 420001 for details of joints not shown. Reinforcement Bars designated (E) shall be epoxy coated. * Bar d5(E) and c2(E) are threaded. Install bar d5(E) and c2(E) at Stage Construction III and pour North Sidewalk. Work this Sheet with Bridge Plan Drawing Sheet 3 and 23

DESIGN STRESSES
 fy = 60,000 p.s.i.
 f'c = 3,500 p.s.i.
 n = 8.5



REVISIONS

NAME	DATE

ILLINOIS DEPARTMENT OF TRANSPORTATION
APPROACH PAVEMENT DETAILS
 31 ST. STREET OVER KILBOURN AVE.
 F.A.U. ROUTE 1463 SECTION 159-1010.1B
 COOK COUNTY
 STATION 223+67.45
 STR. NO. 016-0872

SCALE: VERT. DATE JANUARY 2008
 DRAWN BY JHR
 CHECKED BY CLS