

BENCHMARK BM 105
Set chiseled cross on sidewalk on SE corner of
the intersection of 31st Street and Cicero Avenue
Sta. 204+82.95, 34.21' Rt. El. 602.15

EARTH TECH A TUCCO INTERNATIONAL LTD. COMPANY	F.A.U. RTE.	SECTION	COUNTY	TOTAL SHEET NO.
	1463	1010.1B	COOK	171 133
STA. 405+33.58		TO STA. 408+53.58		
FED. ROAD DIST. NO.	ILLINOIS	FED. AID PROJECT		

CONTRACT NO. 62196
SI of 56

GENERAL NOTES

Concrete Sealer shall be applied to all exposed surfaces of the concrete facing.

All exposed concrete edges shall be chamfered 3/4" except as noted.

Reinforcement bars shall conform to the requirements of ASTM A 706 Gr 60 (IL Modified). See Special Provisions.

Reinforcement bars designated (E) shall be epoxy coated.

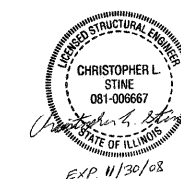
DESIGN SPECIFICATIONS

2002 AASHTO Standard Specifications for Highway Bridges

DESIGN STRESSES

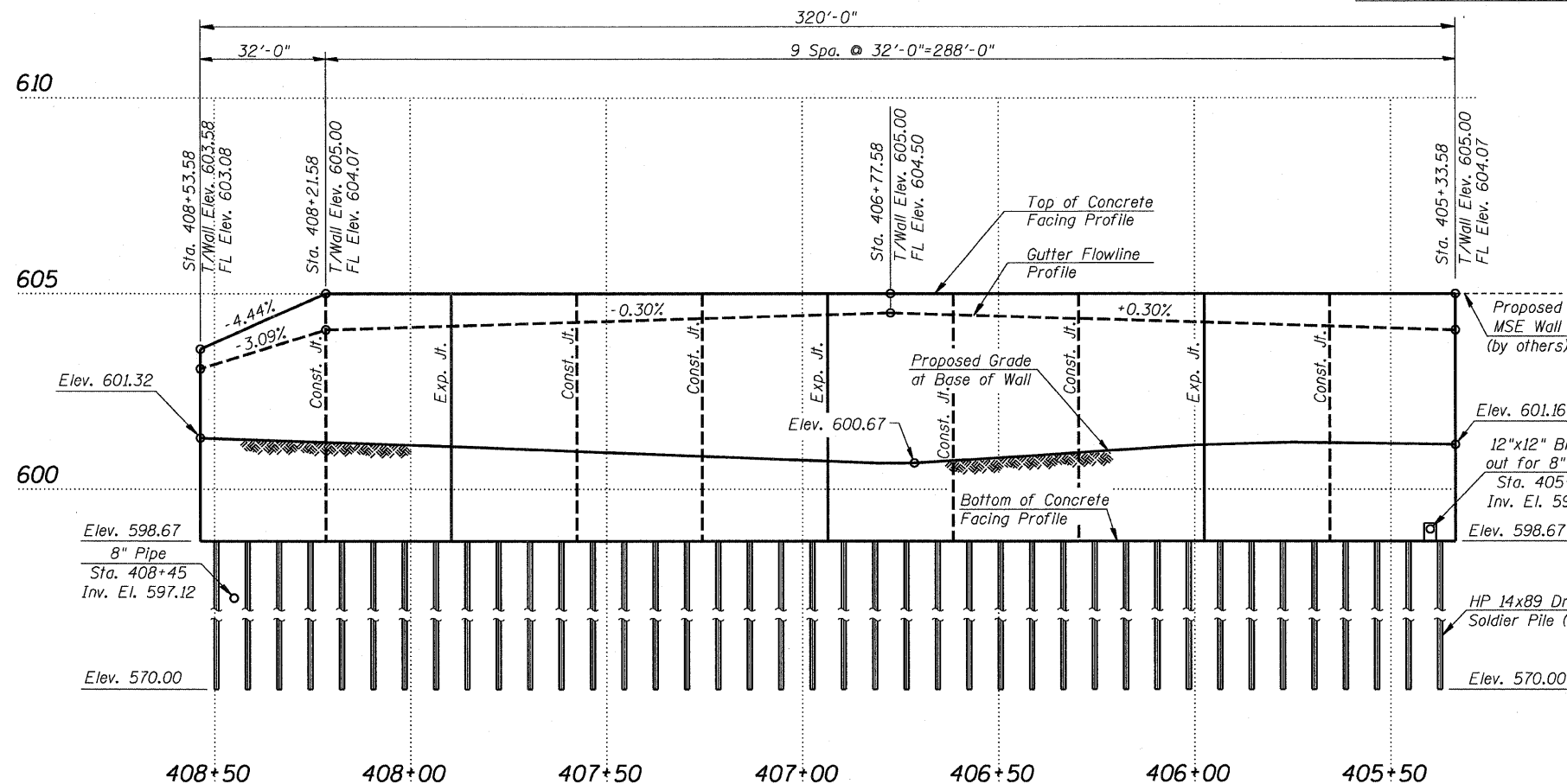
FIELD UNITS

$f'_c = 3,500$ psi
 $f_y = 60,000$ psi (reinforcement)
 $f_y = 36,000$ psi (M270, Gr. 36)

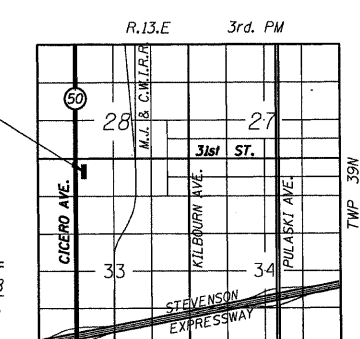
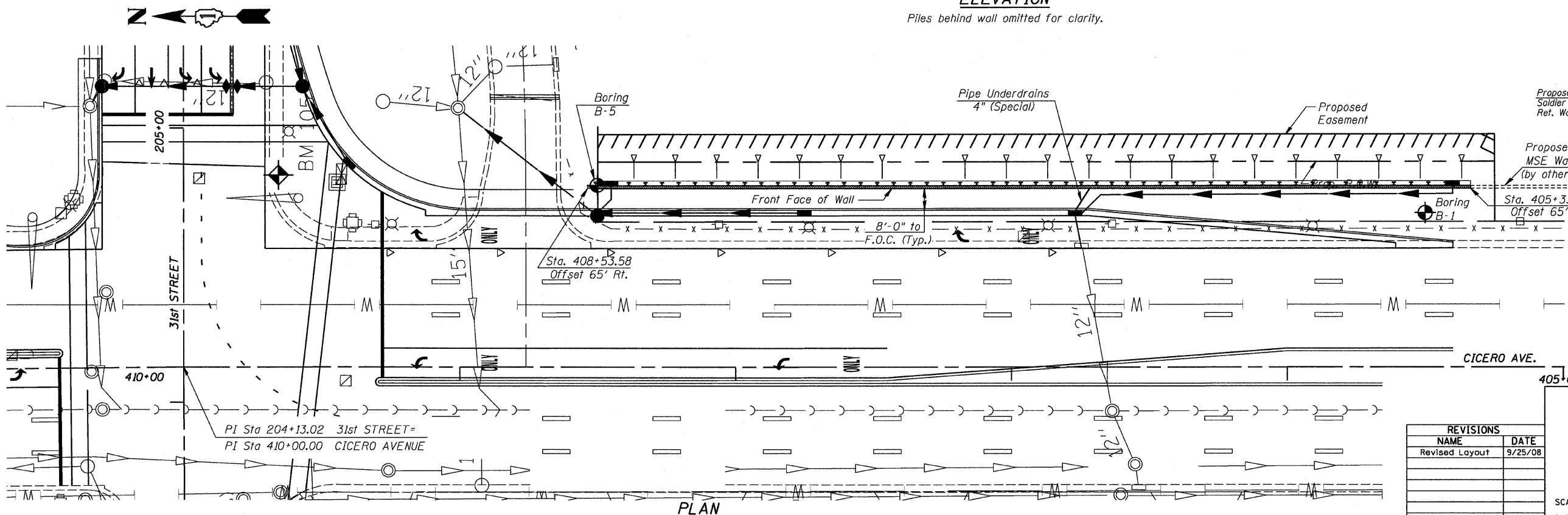


TOTAL BILL OF MATERIAL

Item	Unit	Quantity
Concrete Structures	Cu. Yd.	74.2
Concrete Sealer	Sq. Ft.	1,684
Stud Shear Connectors	Each	274
Untreated Timber Lagging	Sq. Ft.	1,333
Reinforcement Bars, Epoxy Coated	Pound	8,800
Furnishing Soldier Piles (HP Section)	Foot	1,331
Driving Soldier Piles	Foot	1,331
Geocomposite Wall Drain	Sq. Yd.	153
Pipe Underdrains 4" (Special)	Foot	10
Pipe Underdrains for Structures 4"	Foot	320



ELEVATION
Piles behind wall omitted for clarity.



Notes:
1. See Sheet 13 (Earthwork Schedule) for "Structure Excavation" quantity & Sheets 168-170 for cross sections used to quantify this excavation.
2. See Sheet 37 for proposed drainage & utility locations.

REVISIONS	
NAME	DATE
Revised Layout	9/25/08

ILLINOIS DEPARTMENT OF TRANSPORTATION
GENERAL PLAN & ELEVATION
CICERO AVE. RETAINING WALL
IL ROUTE 50 SECTION 1010.1B
COOK COUNTY
STATION 405+33.58 TO 408+53.58
STR. NO. 016-W981
SCALE: VERT. N.T.S. DRAWN BY GF
DATE SEPTEMBER 25, 2008 CHECKED BY CLS