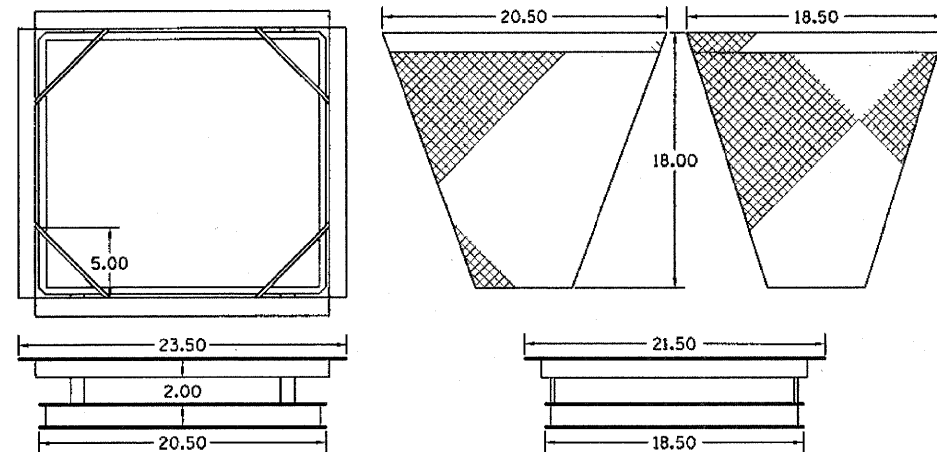


| | | | | |
|---------------------|---------|---------------------------|--------------|-----------|
| F.A.U. RTE. | SECTION | COUNTY | TOTAL SHEETS | SHEET NO. |
| 1463 | • | COOK | 171 | 157 |
| STA. | | TO STA. | | |
| FED. ROAD DIST. NO. | | ILLINOIS FED. AID PROJECT | | |

•1010.1B

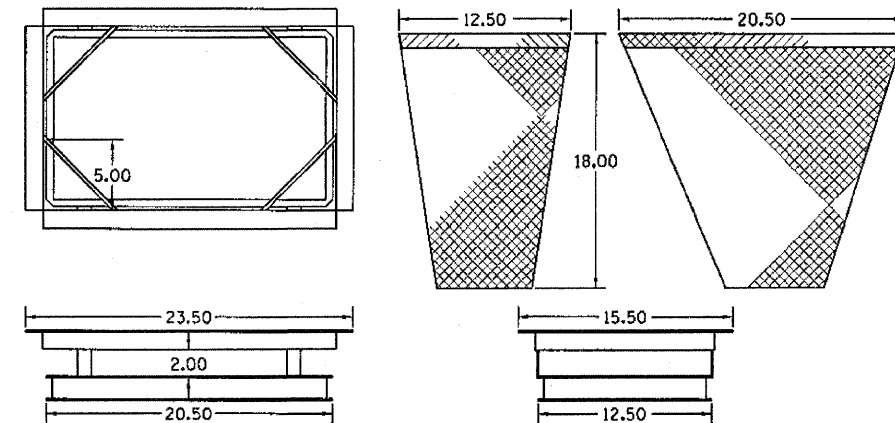
TYPE 24 INLET FILTER

NOTES:
 FRAME: Top piece shall be fabricated from 1 1/4" x 1 1/4" x 1/8" angle.
 Base piece shall be fabricated from 1 1/2" x 1/2" x 1/8" channel. Handles and suspension brackets shall be fabricated from 1 1/4" x 1/4" flat stock. Domestic steel conforming to ASTM-A36.
 SEDIMENT BAG: Shall be fabricated from 4 oz./sq. yd. non-woven polypropylene geotextile and shall be reinforced with polyester mesh. The bag shall be secured to the base piece with a stainless steel strap and lock.



TYPE 23 INLET FILTER

NOTES:
 FRAME: Top piece shall be fabricated from 1 1/4" x 1 1/4" x 1/8" angle.
 Base piece shall be fabricated from 1 1/2" x 1/2" x 1/8" channel. Handles and suspension brackets shall be fabricated from 1 1/4" x 1/4" flat stock. Domestic steel conforming to ASTM-A36.
 SEDIMENT BAG: Shall be fabricated from 4 oz./sq. yd. non-woven polypropylene geotextile and shall be reinforced with polyester mesh. The bag shall be secured to the base piece with a stainless steel strap and lock.



NOTE: ALL UNITS ARE IN INCHES
 UNLESS OTHERWISE NOTED

| REVISIONS | | ILLINOIS DEPARTMENT OF TRANSPORTATION |
|------------|------|-----------------------------------------------|
| NAME | DATE | |
| | | INLET FILTER DETAILS (SHEET 2 OF 2) |
| | | |
| | | |
| | | |
| | | |
| | | |
| | | |
| | | |
| | | |
| | | |
| SCALE NONE | | DRAWN BY |
| DATE | | CHECKED BY |