

F. A. U. R. E.	SECTION	COUNTY	TOTAL SHEETS	SHEET NO.
2806	02-00077-00-WR	COOK	073	009
STA. 3+50		TO STA. 22+44.15		
FED. ROAD DIST. NO. 1	ILLINOIS	FED. AID PROJECT	M-8003(996)	

CONTRACT #63061

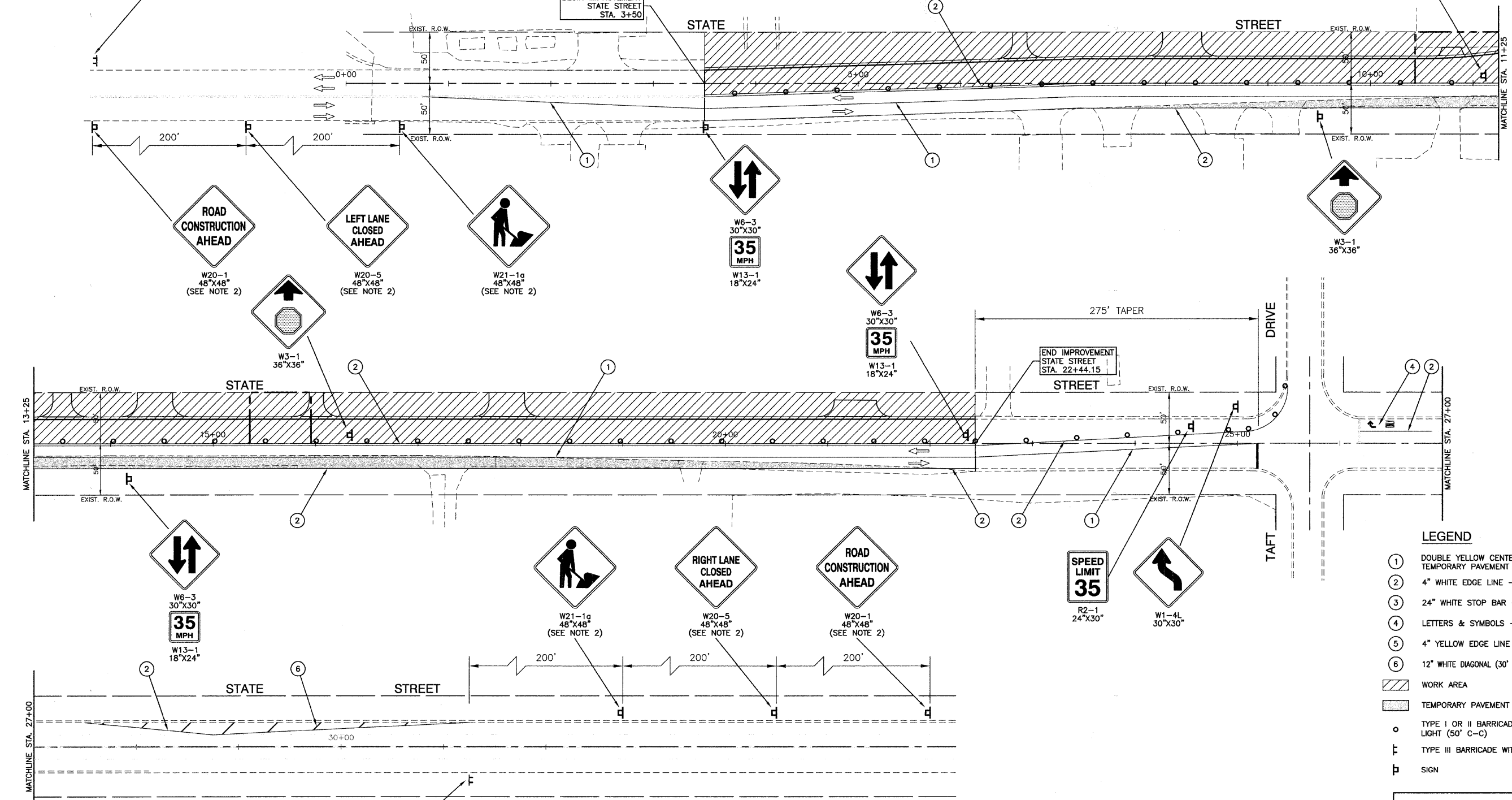


W6-3
30"x30"
35
MPH

W13-1
18"x24"

END
ROAD WORK
G20-2a
36"x18"

BEGIN IMPROVEMENT
STATE STREET
STA. 3+50



LEGEND

- ① DOUBLE YELLOW CENTERLINE (11" C-C) - TEMPORARY PAVEMENT MARKINGS
- ② 4" WHITE EDGE LINE - TEMPORARY PAVEMENT MARKINGS
- ③ 24" WHITE STOP BAR - TEMPORARY PAVEMENT MARKINGS
- ④ LETTERS & SYMBOLS - TEMPORARY PAVEMENT MARKINGS
- ⑤ 4" YELLOW EDGE LINE - TEMPORARY PAVEMENT MARKINGS
- ⑥ 12" WHITE DIAGONAL (30" C/C) - TEMPORARY PAVEMENT MARKINGS
- ▨ WORK AREA
- ▨ TEMPORARY PAVEMENT TO BE CONSTRUCTED
- TYPE I OR II BARRICADE OR DRUM WITH STEADY BURNING LIGHT (50' C-C)
- ⊥ TYPE III BARRICADE WITH STEADY BURNING LIGHT
- ⊞ SIGN

NOTE:

1. THERE ARE EXISTING 12KV OVERHEAD FACILITIES AND APPROXIMATELY 3 POLES IN CONFLICT WITH THE SUBJECT IMPROVEMENT. THE CONTRACTORS SHOULD USE CAUTION IN OPERATING CRANES OR OTHER EQUIPMENT NEAR COMED OVERHEAD FACILITIES.
2. ADVANCED WARNING SIGNS SHALL BE PLACED ACCORDING TO HIGHWAY STANDARD 701606-05

END
ROAD WORK
G20-2a
36"x18"

REVISIONS	
NAME	DATE

ILLINOIS DEPARTMENT OF TRANSPORTATION

STATE STREET AND 168TH STREET INTERSECTION IMPROVEMENT TRAFFIC CONTROL AND PROTECTION STATE STREET STAGE 1

SCALE: VERT. NA
HORIZ. 1"=50'
DATE 7/22/08

DRAWN BY RG
CHECKED BY EA/PKB

ROBINSON ENGINEERING, LTD.
17000 SOUTH PARK AVENUE, SOUTH HOLLAND, ILLINOIS 60473
(708) 381-8700 FAX (708) 381-8888
ILLINOIS DESIGN FIRM REGISTRATION NO. 14600126

07345-TC001-01