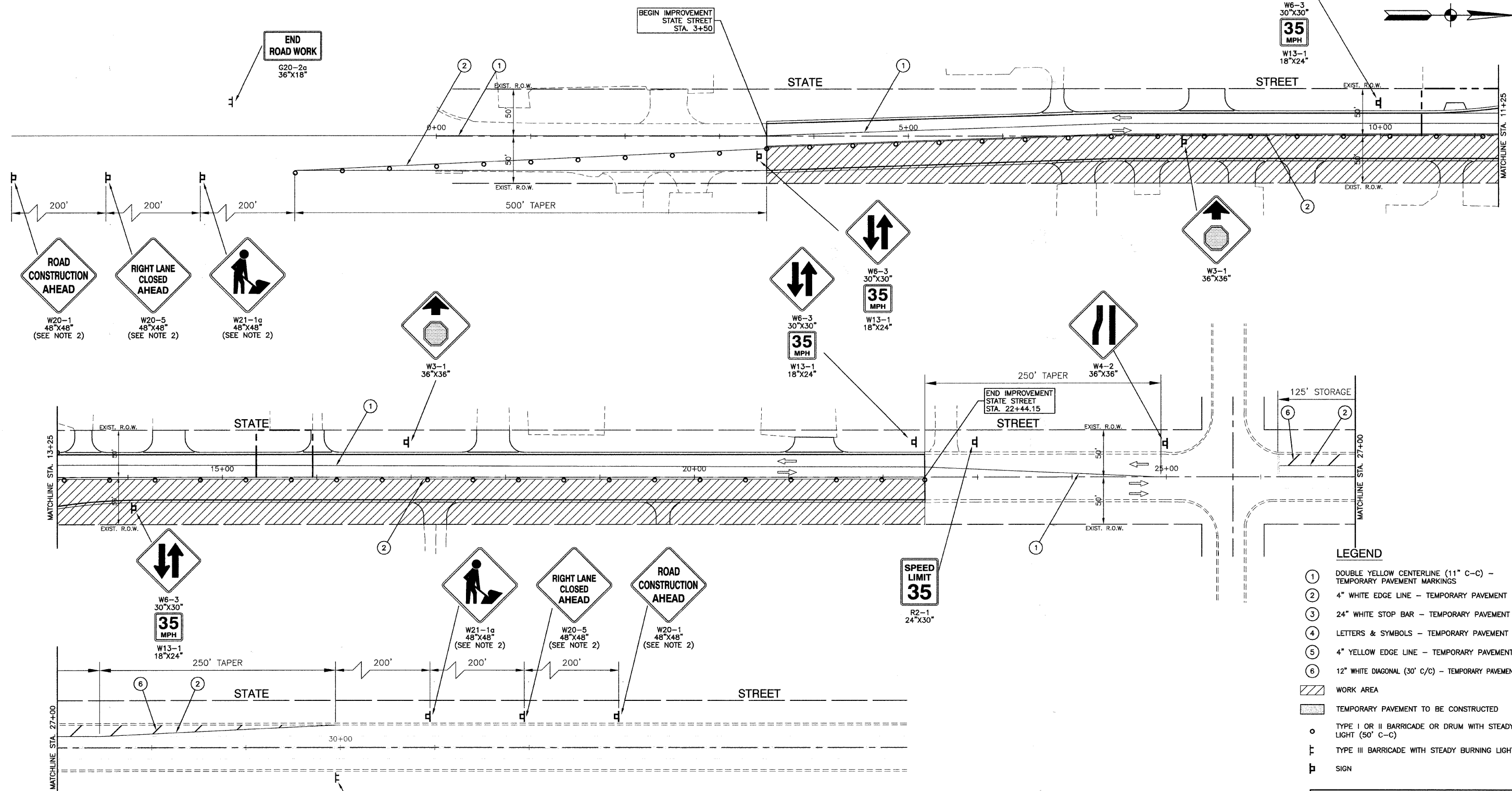


F. A. U. RTE.	SECTION	COUNTY	TOTAL SHEETS	SHEET NO.
2906	02-00077-00-WR	COOK	073	011
STA. 3+50		TO STA. 22+44.15		
FED. ROAD DIST. NO. 1	ILLINOIS	FED. AID PROJECT	M-8003(998)	

CONTRACT #63061



LEGEND

- ① DOUBLE YELLOW CENTERLINE (11" C-C) - TEMPORARY PAVEMENT MARKINGS
- ② 4" WHITE EDGE LINE - TEMPORARY PAVEMENT MARKINGS
- ③ 24" WHITE STOP BAR - TEMPORARY PAVEMENT MARKINGS
- ④ LETTERS & SYMBOLS - TEMPORARY PAVEMENT MARKINGS
- ⑤ 4" YELLOW EDGE LINE - TEMPORARY PAVEMENT MARKINGS
- ⑥ 12" WHITE DIAGONAL (30" C/C) - TEMPORARY PAVEMENT MARKINGS
- WORK AREA
- TEMPORARY PAVEMENT TO BE CONSTRUCTED
- TYPE I OR II BARRICADE OR DRUM WITH STEADY BURNING LIGHT (50' C-C)
- TYPE III BARRICADE WITH STEADY BURNING LIGHT
- SIGN

NOTE:

1. THERE ARE EXISTING 12KV OVERHEAD FACILITIES AND APPROXIMATELY 3 POLES IN CONFLICT WITH THE SUBJECT IMPROVEMENT. THE CONTRACTORS SHOULD USE CAUTION IN OPERATING CRANES OR OTHER EQUIPMENT NEAR COMED OVERHEAD FACILITIES.
2. ADVANCED WARNING SIGNS SHALL BE PLACED ACCORDING TO HIGHWAY STANDARD 701606-05

REVISIONS	
NAME	DATE

ILLINOIS DEPARTMENT OF TRANSPORTATION

**STATE STREET AND 168TH STREET
INTERSECTION IMPROVEMENT
TRAFFIC CONTROL AND PROTECTION
STATE STREET STAGE 2**

SCALE: VERT. NA
HORIZ. 1"=50'
DATE 7/22/08

DRAWN BY RG
CHECKED BY EA/PKB