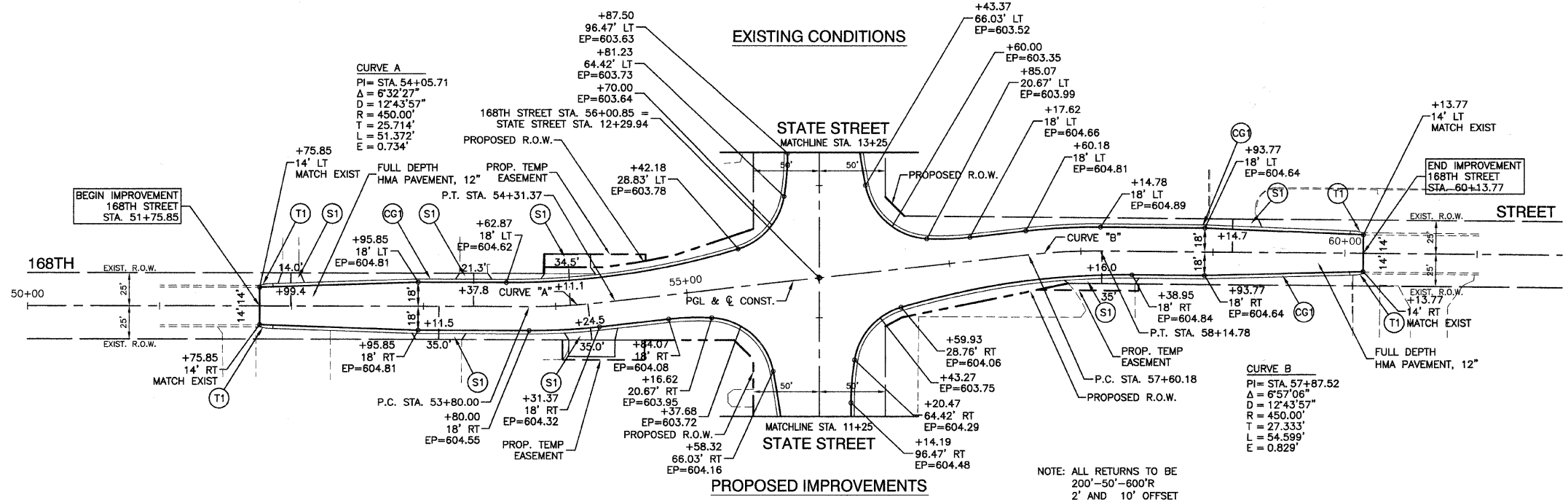
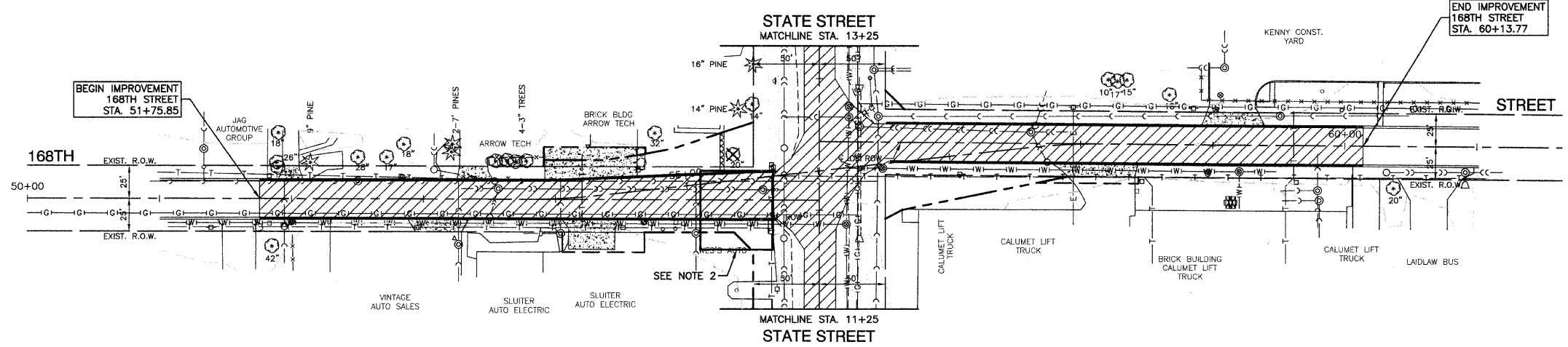
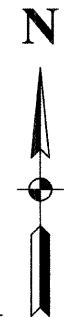


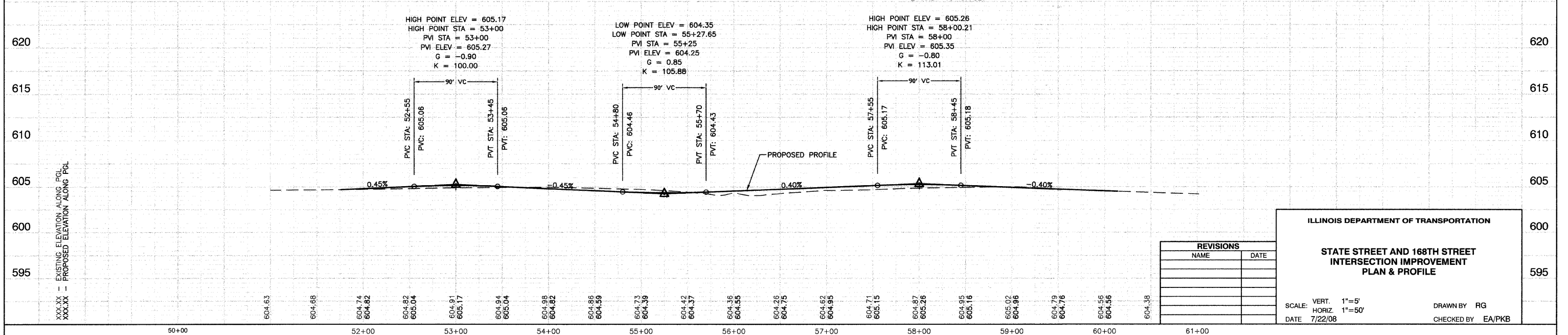
CONTRACT #63061



- LEGEND**
- HMA PAVEMENT REMOVAL
 - DRIVEWAY PAVEMENT REMOVAL
 - COMB. CURB & GUTTER REMOVAL
 - SIDEWALK REMOVAL
 - CONTAMINATION SITE
 - CURB & GUTTER TYPE B-6.24
 - 10' TRANSITION FROM C. & G TYPE B-6.12 TO B-6.24
 - HMA DRIVEWAY, 8" HMA BASE COURSE, 2" HMA SURFACE COURSE, MIX "C", N50
 - P.C.C DRIVEWAY PAVEMENT, 8"
 - CURB AND GUTTER FORMED BY HAND FOR PROPER DRAINAGE
 - TREE REMOVAL
 - TREE ROOT PRUNING

- NOTE:**
1. SEE PAVEMENT MARKING SHEETS FOR TAPERS AND STORAGE LENGTHS
 2. REFER TO SPECIAL PROVISION DURING SOIL EXCAVATION AT CONTAMINATION SITES
 3. ALL STATIONS AND OFFSETS REFERENCE STATE STREET C/L OF CONSTRUCTION
 4. THERE ARE EXISTING 12KV OVERHEAD FACILITIES AND APPROXIMATELY 3 POLES IN CONFLICT WITH THE SUBJECT IMPROVEMENT. THE CONTRACTORS SHOULD USE CAUTION IN OPERATING CRANES OR OTHER EQUIPMENT NEAR COMED OVERHEAD FACILITIES.

BENCH MARK: #38
 SQUARE CUT IN SOUTH EDGE OF CONC. BASE OF R.R. SIGNAL, THE WEST OF THE TWO. N.E. CORNER VINCENNES RD. AND TAFT DR.
 ELEVATION = 606.50



XXX-XX - EXISTING ELEVATION ALONG PGL
 XXX-XX - PROPOSED ELEVATION ALONG PGL

REVISIONS	
NAME	DATE

ILLINOIS DEPARTMENT OF TRANSPORTATION

STATE STREET AND 168TH STREET INTERSECTION IMPROVEMENT PLAN & PROFILE

SCALE: VERT. 1"=5'
 HORIZ. 1"=50'

DATE 7/22/08

DRAWN BY RG
 CHECKED BY EA/PKB