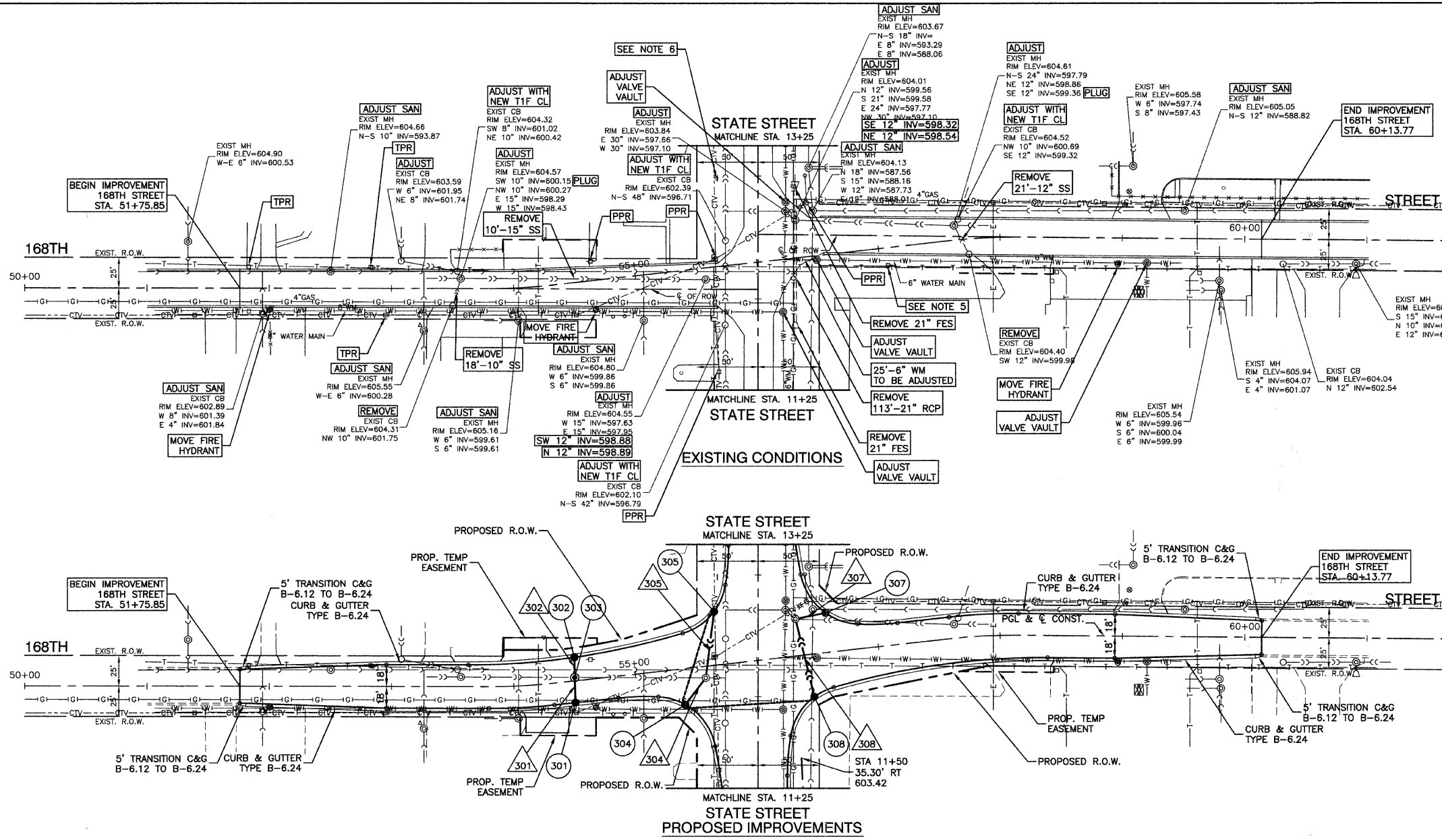
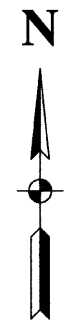


| | | | | |
|-----------------------|----------------|------------------|--------------|-----------|
| F.A.U. # | SECTION | COUNTY | TOTAL SHEETS | SHEET NO. |
| 2906 | 02-00077-00-WR | COOK | 073 | 019 |
| STA. 51+75.85 | | TO STA. 60+13.77 | | |
| FED. ROAD DIST. NO. 1 | ILLINOIS | FED. AID PROJECT | M-8003(596) | |

CONTRACT #63061



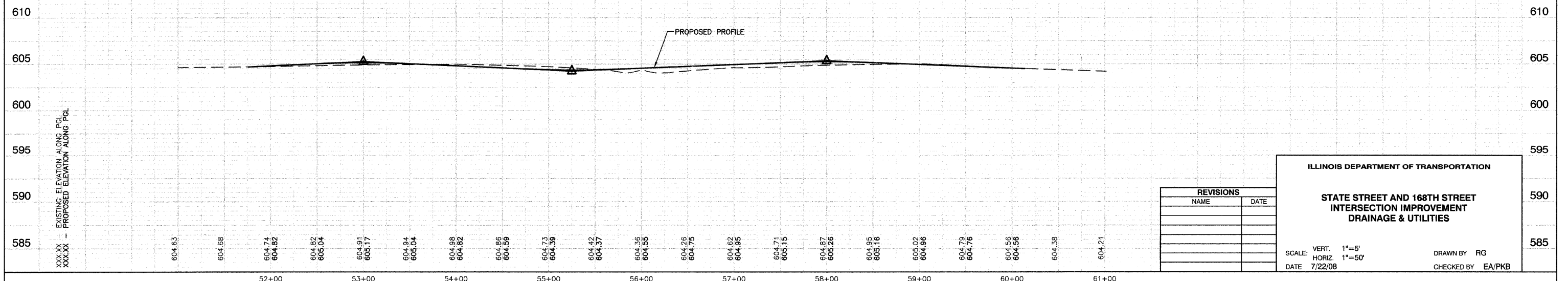
| | | |
|-----|-------------------------------------------------------------------------------------------------------------------------------------|---------------------------------------------|
| 301 | STA 54+50, 19.07' RT CB TC, T24 F&G RIM ELEV = 604.23 N 12" INV = 599.73 | 19' - 12" SST2 @ 1.40% (4.09) |
| 302 | STA 54+50, 20.23' LT CB TC, T24 F&G RIM ELEV = 604.21 S 12" INV = 599.71 | 15' - 12" SST2 @ 1.90% (3.23) |
| 303 | STA 54+50 2.95' LT MH TA, 4' DIA TIF CL RIM ELEV = 604.53 E-W 15" INV = 597.95 N 12" INV = 599.42 S 12" INV = 599.46 | 24' - 12" SST2 @ 1.40% (5.64) |
| 304 | STA 55+37.68, 30.41' RT CB TC, T24 F&G RIM ELEV = 603.72 N 4" INV = 600.72 NE 12" INV = 599.22 | 51' - 12" SST2 @ 0.50% (12.33) |
| 305 | STA 12+70 (STATE ST), 36.94' LT CB TC, T24 F&G RIM ELEV = 603.64 S 4" INV = 600.64 E 12" INV = 599.14 | 24' - 12" SST2 @ 1.30% (5.66) |
| 307 | STA 56+60, 33.62' LT CB TC, T24 F&G RIM ELEV = 603.35 SW 12" INV = 598.85 | 41' - 12" SST2 @ 1.50% (15.33) [22' WMR] |
| 308 | STA 12+00 (STATE ST), 47.04' RT CB TC, T24 F&G RIM ELEV = 603.75 W 4" INV = 600.75 NW 12" INV = 599.25 | |

- NOTES:
- ALL RIM ELEVATIONS OF STRUCTURES IN THE PROPOSED CURB LINE ARE GIVEN TO THE EDGE OF PAVEMENT. ALL OTHER RIM ELEVATIONS ARE GIVEN TO THE CENTER OF STRUCTURES. ALL CALL-OUTS REFERENCE THE CENTERLINE OF CONSTRUCTION
 - (XX.X) DENOTES CUBIC YARDS OF TRENCH BACKFILL
 - [XX' WMR] DENOTES WATER MAIN REQUIREMENT STORM SEWER PIPE, AS DESCRIBED IN THE SPECIAL PROVISIONS
 - THERE ARE EXISTING 12KV OVERHEAD FACILITIES AND APPROXIMATELY 3 POLES IN CONFLICT WITH THE SUBJECT IMPROVEMENT. THE CONTRACTORS SHOULD USE CAUTION IN OPERATING CRANES OR OTHER EQUIPMENT NEAR COMED OVERHEAD FACILITIES.
 - EXISTING MWRD MONITORING WELL TO BE CAPPED AND ABANDONED. SEE SPECIAL PROVISION.
 - EXISTING WATER WELL TO BE CAPPED AND ABANDONED. SEE SPECIAL PROVISION.

LEGEND

- ADJUST ADJUST STORM SEWER STRUCTURE FRAME AND LID
- ADJUST SAN ADJUST SANITARY SEWER STRUCTURE FRAME AND LID
- PPR POWER POLE TO BE RELOCATED BY OTHERS
- TPR TELEPHONE POLE TO BE RELOCATED BY OTHERS
- 4" PIPE UNDERDRAIN

BENCH MARK: #38
 SQUARE CUT IN SOUTH EDGE OF CONC. BASE OF R.R. SIGNAL, THE WEST OF THE TWO, N.E. CORNER VINCENNES RD. AND TAFT DR.
 ELEVATION = 606.50



| REVISIONS | |
|-----------|------|
| NAME | DATE |
| | |
| | |
| | |
| | |

ILLINOIS DEPARTMENT OF TRANSPORTATION

STATE STREET AND 168TH STREET INTERSECTION IMPROVEMENT DRAINAGE & UTILITIES

SCALE: VERT. 1"=5'
 HORIZ. 1"=50'
 DATE 7/22/08

DRAWN BY RG
 CHECKED BY EA/PKB