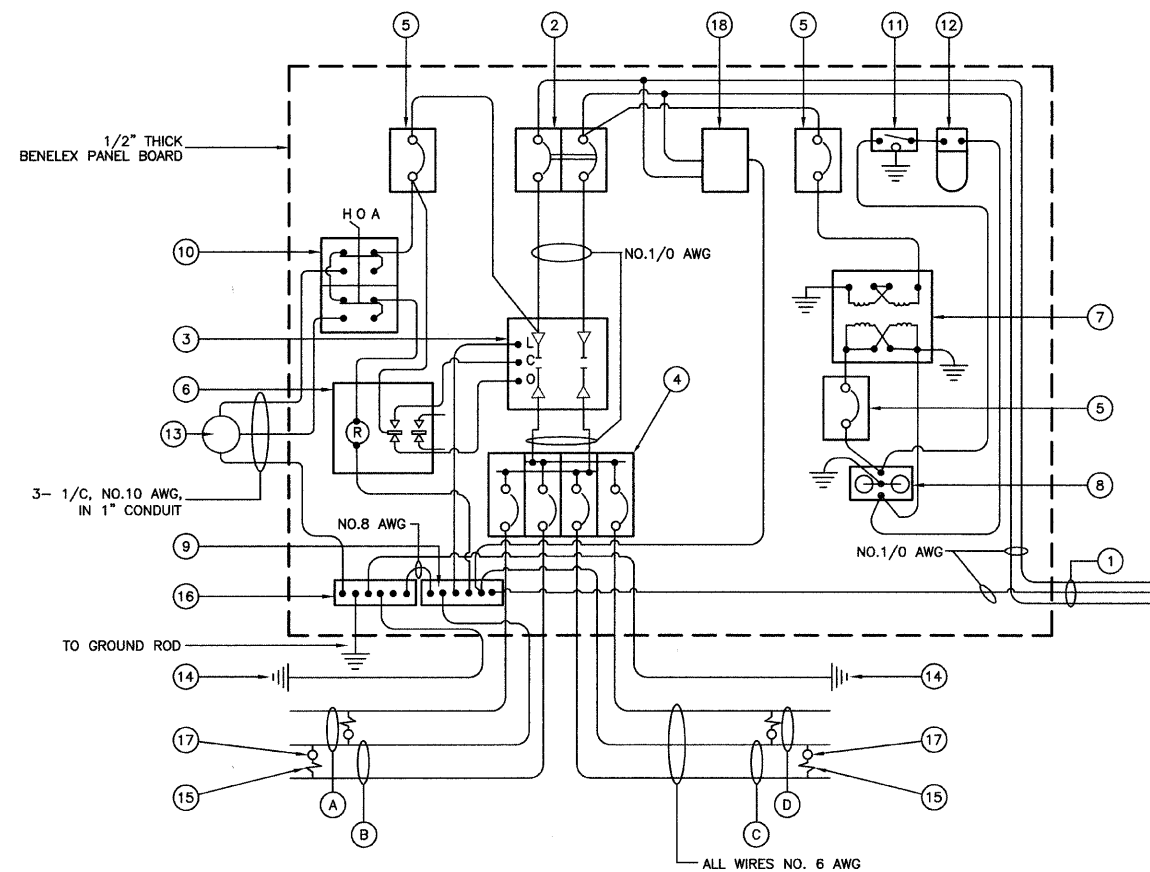


F. A. U. RITE	SECTION	COUNTY	TOTAL SHEETS	SHEET NO.
2908	02-00077-00-WR	COOK	073	028
STA.		TO STA.		
FED. ROAD DIST. NO. 1	ILLINOIS	FED. AID PROJECT	M-8003(596)	

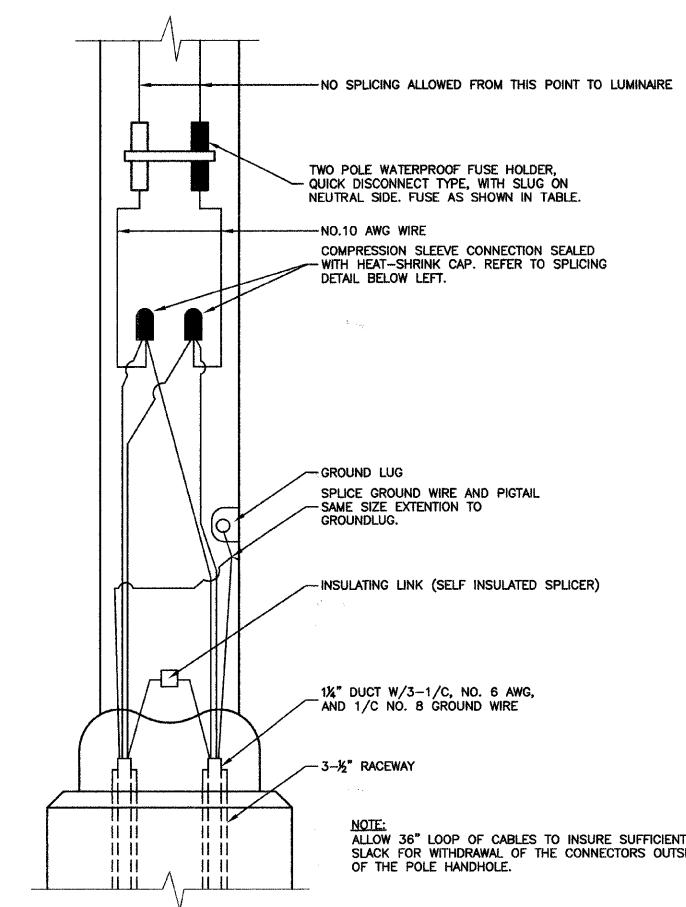
CONTRACT #63061



CONTROLLER WIRING DIAGRAM

GENERAL NOTES FOR CONTROL CABINET

- ENTIRE CONTROL CABINET SHALL BE GROUNDED.
- ALL WIRING SHALL BE TAGGED WITH SELF-STICKING WIRE MARKERS.
- GROUND BUS TO BE COLOR CODED GREEN, NEUTRAL BUS WHITE, AND BONDED TO CABINET ENCLOSURE BY LISTED PRESSURE CONNECTORS OR LISTED CLAMPS.
- ALL INTERNAL CONTROLLER WIRING TO BE NO.12 AWG UNLESS OTHERWISE SPECIFIED.
- CABINET WIRING INSULATION TO BE TYPE XHHW OR APPROVED EQUAL.



POLE HANDHOLE WIRING DIAGRAM
(TYPICAL FOR SINGLE LUMINAIRE INSTALLATION)

CONTROLLER WIRING DIAGRAM LEGEND

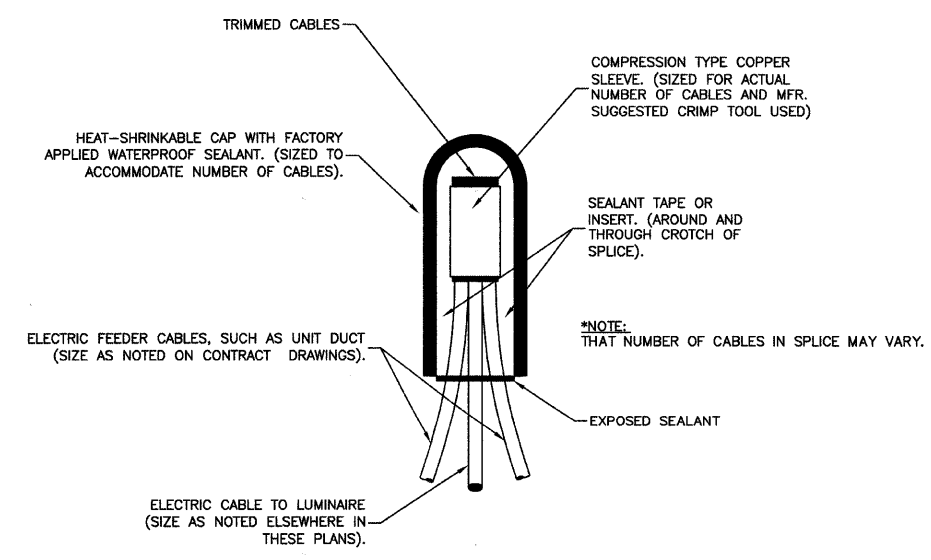
- 3-1/C, NO. 1/0, 600V SERVICE WIRE IN 2" DIA. GALVANIZED STEEL CONDUIT FOR 240/480 VOLT, 1Ø, 3 WIRE, 60HZ. SERVICE.
- (1) 60 AMP MAIN CIRCUIT BREAKER, 2 POLE, 600 VOLT, 100 AMP BASE, NON-INTERCHANGEABLE TRIP INTERRUPTING RATING NEMA - 14000 AMP AT 480 V. PROVIDE WARNING NAMEPLATE: "CAUTION: INCOMING POWER IS ON WHEN MAIN BREAKER IS OFF."
- (1) 60 AMP REMOTE CONTROL CONTACTOR SWITCH, ELECTRICALLY OPERATED, MECHANICALLY HELD, 2 POLE, SINGLE THROW, MINIMUM 60 AMP, 600 VOLT
- (4) 30 AMP CIRCUIT BREAKER, 1 POLE, 240 VOLT, 100 AMP BASE, NON-INTERCHANGEABLE TRIP RATING NEMA - 14000 AMP AT 240 VOLTS.
- (3) 20 AMP CONTROL CIRCUIT-CIRCUIT BREAKER, 1 POLE, 240 VOLT, 100 AMP BASE, NON-INTERCHANGEABLE TRIP INTERRUPTING RATING NEMA 14000 AMP AT 240 V.
- (1) 20 AMP, 1 POLE DOUBLE THROW, 240 VOLT RELAY
- (1) 1.5 KVA, SINGLE PHASE, ENCAPSULATED TRANSFORMER 240x480/120x240 VOLT, 60 HZ.
- (1) 20 AMP, 120 VOLT DUPLEX GFCI RECEPTACLE.
- NEUTRAL BUS BAR, 1/4"x1"x12" LONG MOUNTED ON PANEL WITH TAPS.
- 3 POSITION SELECTOR SWITCH
- SWITCH FOR LIGHTING FIXTURE MOUNTED IN BOX.
- WEATHER-PROOF INCANDESCENT LIGHTING FIXTURE WITH 60 WATT, 120 V LAMP.
- PHOTOCELL MOUNTED TO TOP OF NEAREST LIGHT POLE, 240 V.
- NO. 8 AWG INSULATED GROUND WIRE
- IN-LINE TWO POLE FUSEHOLDER WITH FUSE AS NOTED IN FUSE TABLE
- GROUND BUS BAR 1/4"x1"x12" LONG MOUNTED ON PANEL WITH TAPS.
- LUMINAIRE, 310W HPS
- SURGE SUPPRESSOR
- CIRCUIT
- CIRCUIT
- CIRCUIT
- CIRCUIT

LIGHTING GENERAL NOTES

- ALL WORK TO CONFORM TO THE NATIONAL ELECTRICAL CODE AND ANY APPLICABLE LOCAL CODES.
- CONTRACTOR TO VERIFY LOCATION OF ALL UNDERGROUND UTILITIES BEFORE TRENCHING OR AUGERING.
- BEFORE INSTALLING STANDARDS NEAR OVERHEAD FACILITIES CALL C.E. Co. FOR APPROVAL OF LOCATION.
- FOR LOCATION OF EXISTING UNDERGROUND ELECTRICAL CABLE CALL C.E. Co.
- SIZE ALL CONDUIT AS SPECIFIED ON DRAWINGS.
- CONTRACTOR SHALL TAKE ALL NECESSARY MEASURES TO RESTORE ANY SPECIALIZED LANDSCAPING, (I.E. DECORATIVE ROCKS, SHRUBS, PLANTS, ECT.) OR SHALL REPLACE IT, THE COST OF WHICH SHALL BE CONSIDERED INCIDENTAL TO THE CONTRACT.

NOMINAL WATTAGE	FUSE SIZE
310	4.0 AMP

LUMINAIRE FUSE SIZE TABLE



SPLICING ELECTRIC CABLES
BASIC MATERIALS AND METHODS

REVISIONS	
NAME	DATE

ILLINOIS DEPARTMENT OF TRANSPORTATION

STATE STREET AND 168TH STREET
INTERSECTION IMPROVEMENT
STREET LIGHTING DETAILS

SCALE: VERT. NA
 HORIZ. NA
DATE: 7/22/08

DRAWN BY: PS
CHECKED BY: PAP

ROBINSON ENGINEERING, LTD.
1700 SOUTH PARK AVENUE, SOUTH HOLLAND, ILLINOIS 60473
(708) 331-8700 FAX (708) 331-3828
ILLINOIS DESIGN FIRM REGISTRATION NO. 164001128

07345-LIGHT-03