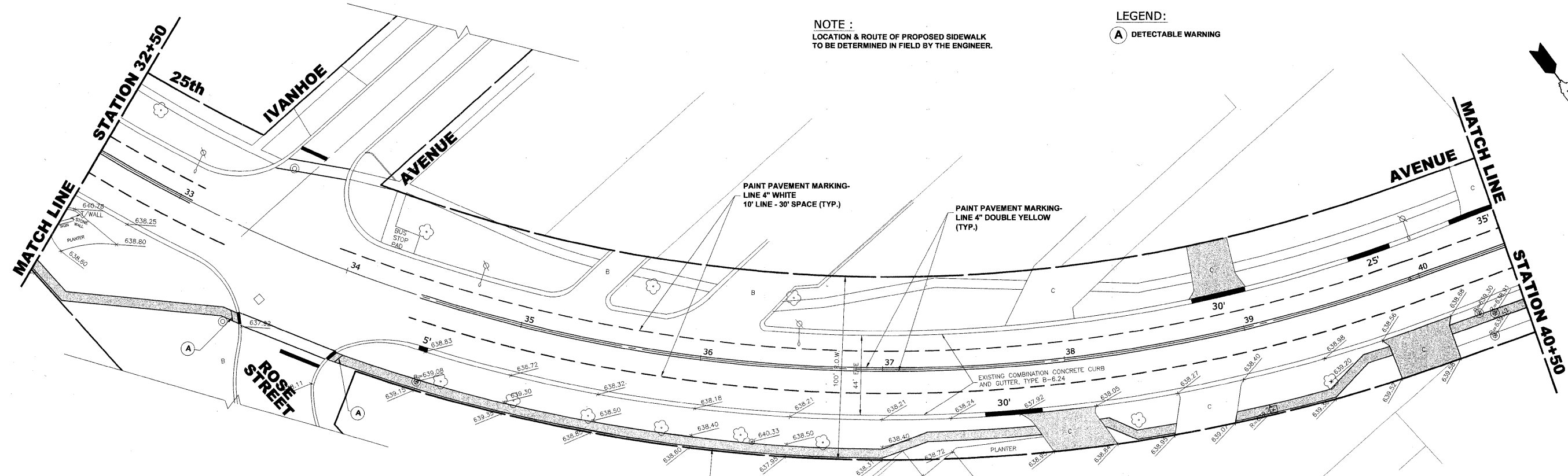
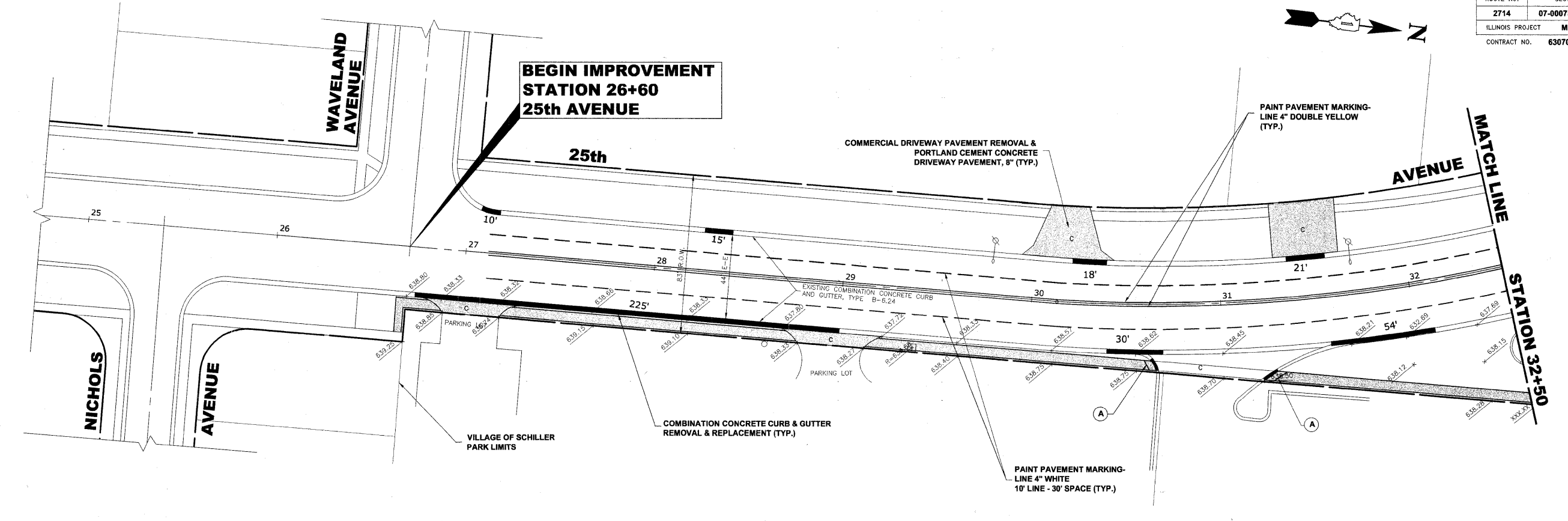


ROUTE NO.	SECTION	COUNTY	TOTAL SHEETS	SHEET NO.
2714	07-00075-00-RP	COOK	16	7
ILLINOIS PROJECT		M-9003 (035)		
CONTRACT NO.		63070		



NOTE :
LOCATION & ROUTE OF PROPOSED SIDEWALK
TO BE DETERMINED IN FIELD BY THE ENGINEER.

LEGEND:
A DETECTABLE WARNING

Drawing file: W:\Projects\80008062 - 25th Ave Improvement\25th Avenue\25th Avenue.dwg Jul 23, 2008 - 4:50pm

HANCOCK ENGINEERING ♦ Civil Engineers ♦ Municipal Consultants ♦ Established 1911

9933 Roosevelt Road
Westchester, Illinois 60154-2780
Phone: 708-965-0300
Fax: 708-965-1212

REVISION:	

**SCHILLER PARK
25th AVENUE IMPROVEMENT
(WAVELAND AVENUE TO
LAWRENCE AVENUE)**

SCALE: 1"=30'

DRAWN BY: LEV, DMM, MK
CHECKED BY: BP
DATE: 7/23/2008

E.H.E. PROJECT NO.: 800-08-06201