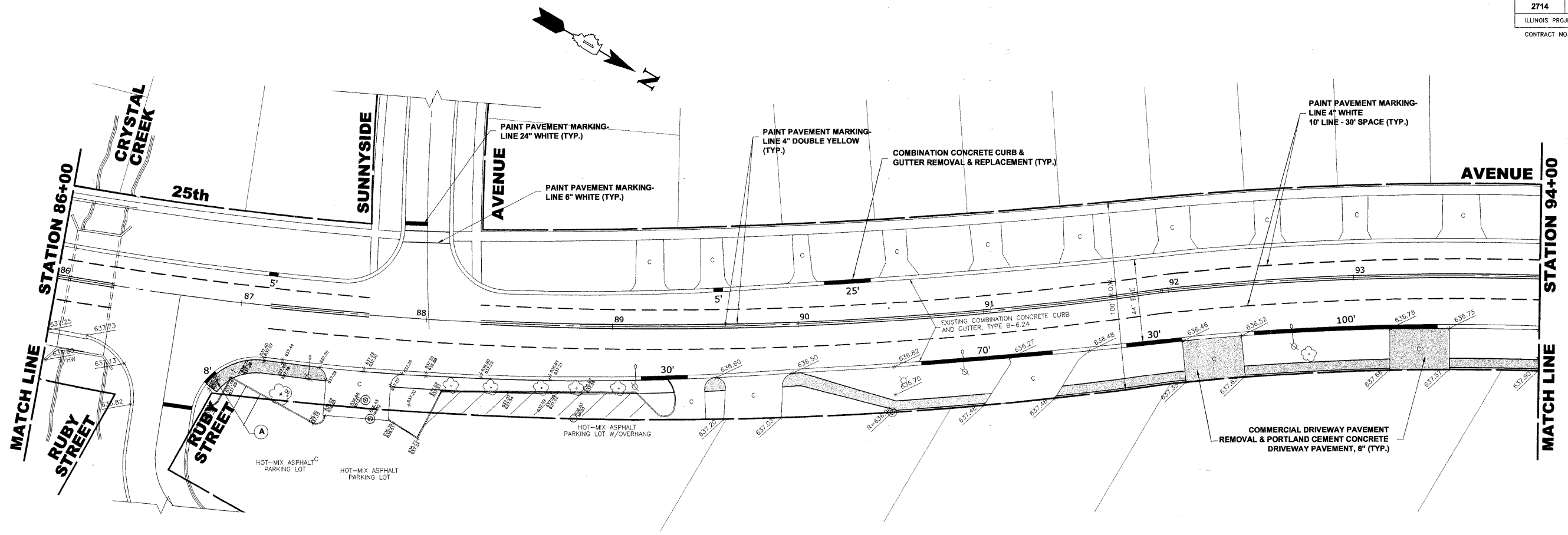
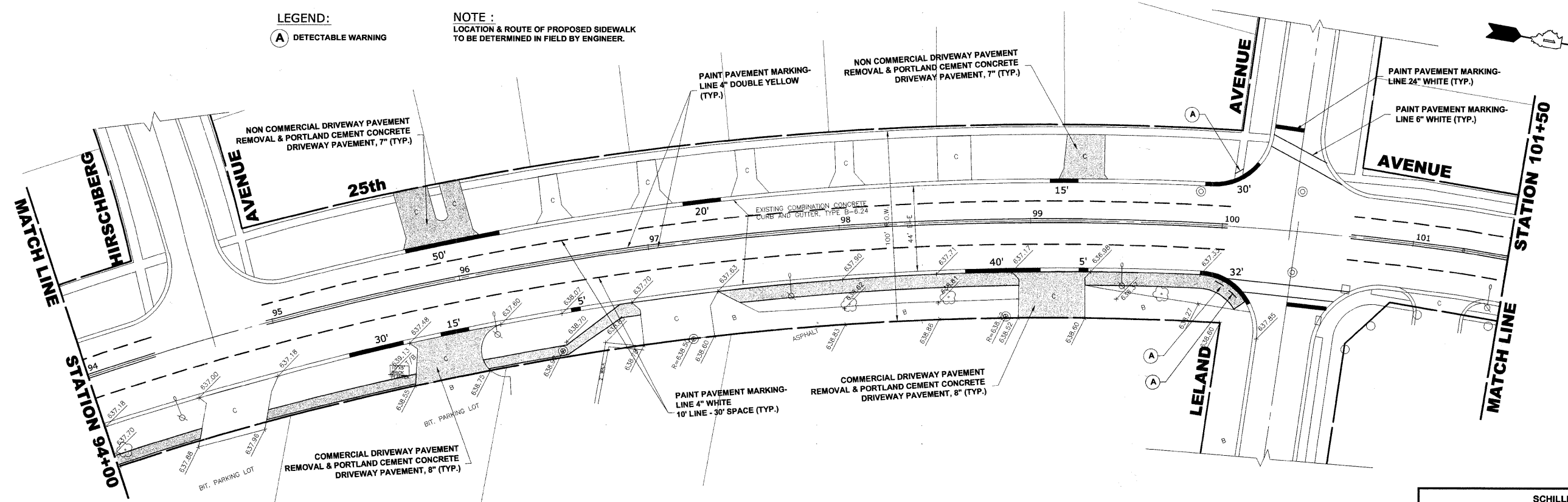


ROUTE NO.	SECTION	COUNTY	TOTAL SHEETS	SHEET NO.
2714	07-00075-00-RP	COOK	16	11
ILLINOIS PROJECT		M-9003 (035)		
CONTRACT NO.		63070		



LEGEND:
 (A) DETECTABLE WARNING

NOTE:
 LOCATION & ROUTE OF PROPOSED SIDEWALK TO BE DETERMINED IN FIELD BY ENGINEER.



**SCHILLER PARK
 25th AVENUE IMPROVEMENT
 (WAVELAND AVENUE TO
 LAWRENCE AVENUE)**

REVISION:

HANCOCK ENGINEERING ♦ Civil Engineers ♦ Municipal Consultants ♦ Established 1911

9933 Roosevelt Road
 Westchester, Illinois 60154-2780
 Phone: 708/865-0300
 Fax: 708/865-1212

SCALE: 1"=30'

DRAWN BY: LEV, DMM, MK
 CHECKED BY: BP
 DATE: 7/23/2008

Drawing file: W:\Projects\80008082 - 25th Ave Improvement\25th Avenue\25th Avenue.dwg Jul 23, 2008 4:50pm