

STATE OF ILLINOIS

COUNTY OF COOK

DEPARTMENT OF HIGHWAYS

# PLANS FOR PROPOSED FEDERAL AID HIGHWAY

PLAN - 1"=50'  
PROFILE HORIZ. - 1"=50'  
PROFILE VERT. - 1"=5'  
CROSS SECTIONS HORIZ. - 1"=10'  
CROSS SECTIONS VERT. - 1"=5'

FAU RTE.	SECTION	COUNTY	TOTAL SHEETS	SHEET NO.
3603	03-00049-00-FP	COOK	045	001
STA.	TO STA.			
FED. ROAD DIST. NO. 1	ILLINOIS	FED. AID PROJECT M8003 (559)		

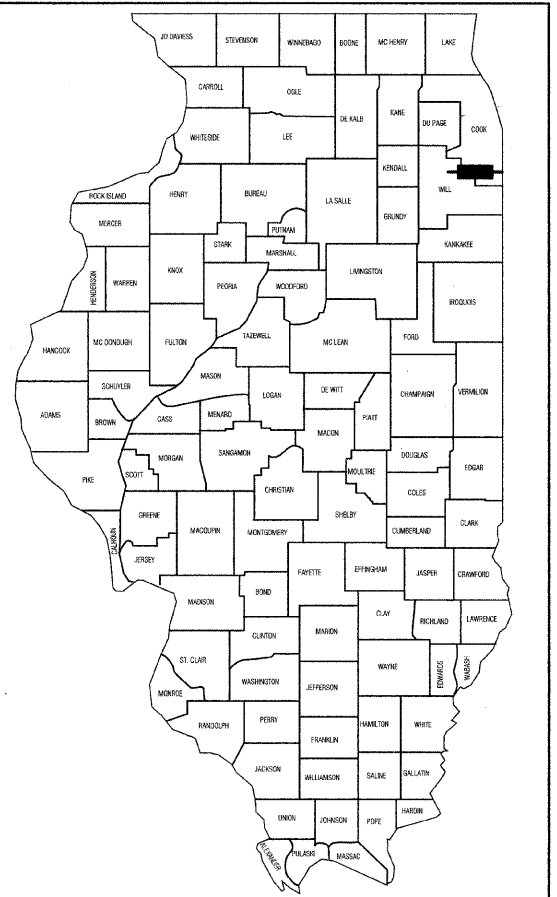
CONTRACT #63078

INDEX OF SHEETS  
SEE SHEET NO. 2

STATE STANDARDS  
SEE SHEET NO. 2

DESIGN DESIGNATION - MAIN STREET ADT 14,000 (2020) - COLLECTOR - 4.2 (BIT-20) PV=22,320 SU=960 MU=720	
	171ST STREET
2000 ADT -	14,000
2030 ADT -	14,000
POSTED SPEED LIMIT -	25 mph
DESIGN PERIOD -	20 YEARS
DESIGN SPEED LIMIT -	25 mph
STREET CLASSIFICATION -	CLASS II

F.A.U. ROUTE 3603  
 MAIN STREET IMPROVEMENTS  
 NORTH MAIN STREET (FAU 2906) TO STATE STREET (FAU 2916)  
 PROJECT NO.: M8003 (559)  
 SECTION NO.: 03-00049-00-FP  
 JOB NO.: C-91-132-06  
 VILLAGE OF GLENWOOD  
 COOK COUNTY



LOCATION OF SECTION INDICATED THIS: - [black box] -

STATE OF ILLINOIS DEPARTMENT OF TRANSPORTATION  
DIVISION OF HIGHWAYS

Approved: 7/24/08

Passed: August 13, 2008  
*Christoph Holt*  
 District 1 Engineer of Local Roads & Streets

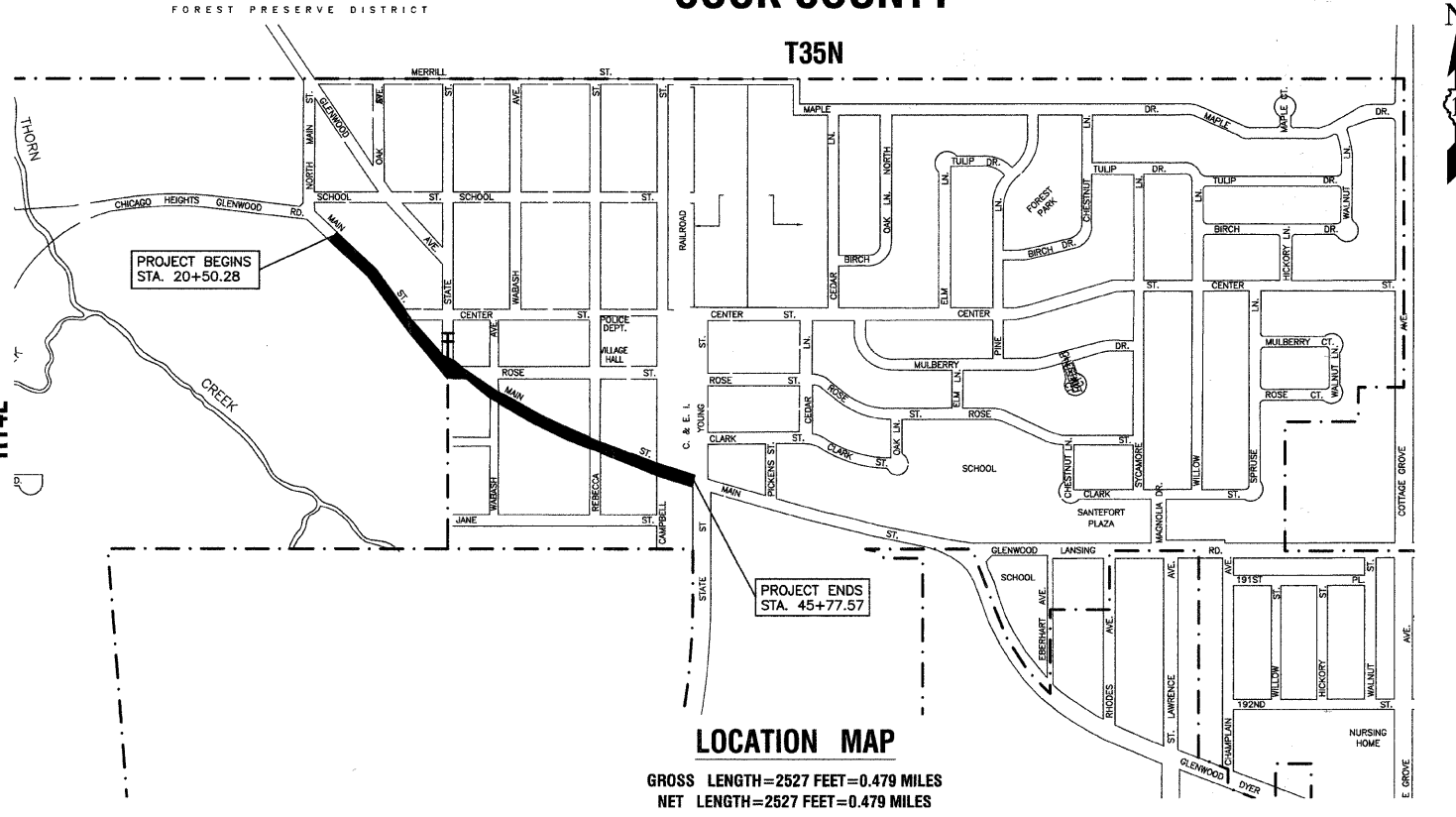
Released for Bid Based on Limited Review: August 18, 2008  
*Diana M. O'Keefe*  
 Deputy Director of Highways, Region 1 Engineer

DESCRIPTION OF IMPROVEMENT  
THIS IMPROVEMENT CONSISTS OF EARTH EXCAVATION, CONSTRUCTION OF STORM SEWERS AND DRAINAGE STRUCTURES, FORCE MAIN, AND ROADWAY WIDENING. ALL INCIDENTAL WORK AS NECESSARY TO COMPLETE THE IMPROVEMENT SHOWN HEREIN AND AS DESCRIBED IN THE SPECIFICATIONS.

PRINTED BY THE AUTHORITY OF THE STATE OF ILLINOIS

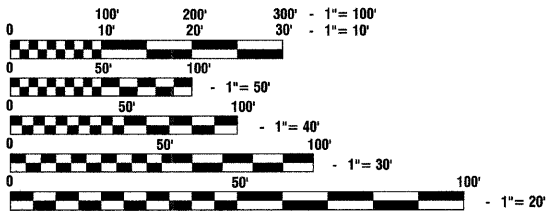
PREPARED BY OR UNDER THE DIRECT SUPERVISION OF:

*William P. Joly*  
7/24/08



LOCATION MAP

GROSS LENGTH=2527 FEET=0.479 MILES  
NET LENGTH=2527 FEET=0.479 MILES



FULL SIZE PLANS HAVE BEEN PREPARED USING STANDARD ENGINEERING SCALES, REDUCED SIZED PLANS WILL NOT CONFORM TO STANDARD SCALES, IN MAKING MEASUREMENTS ON REDUCED PLANS, THE ABOVE SCALES MAY BE USED.

J. U. L. I. E.  
JOINT UTILITY LOCATION INFORMATION FOR EXCAVATION  
1 - 800 - 892 - 0123 OR 811

CONTRACT NO. 63078

DOT FIELD ENGINEER: MELCHOR MANGOBA 847-705-4408  
CONSULTANTS: ROBINSON ENGINEERING, LTD. 708-331-6700