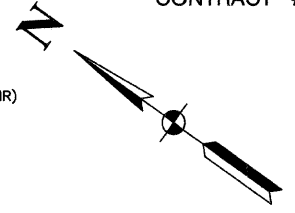


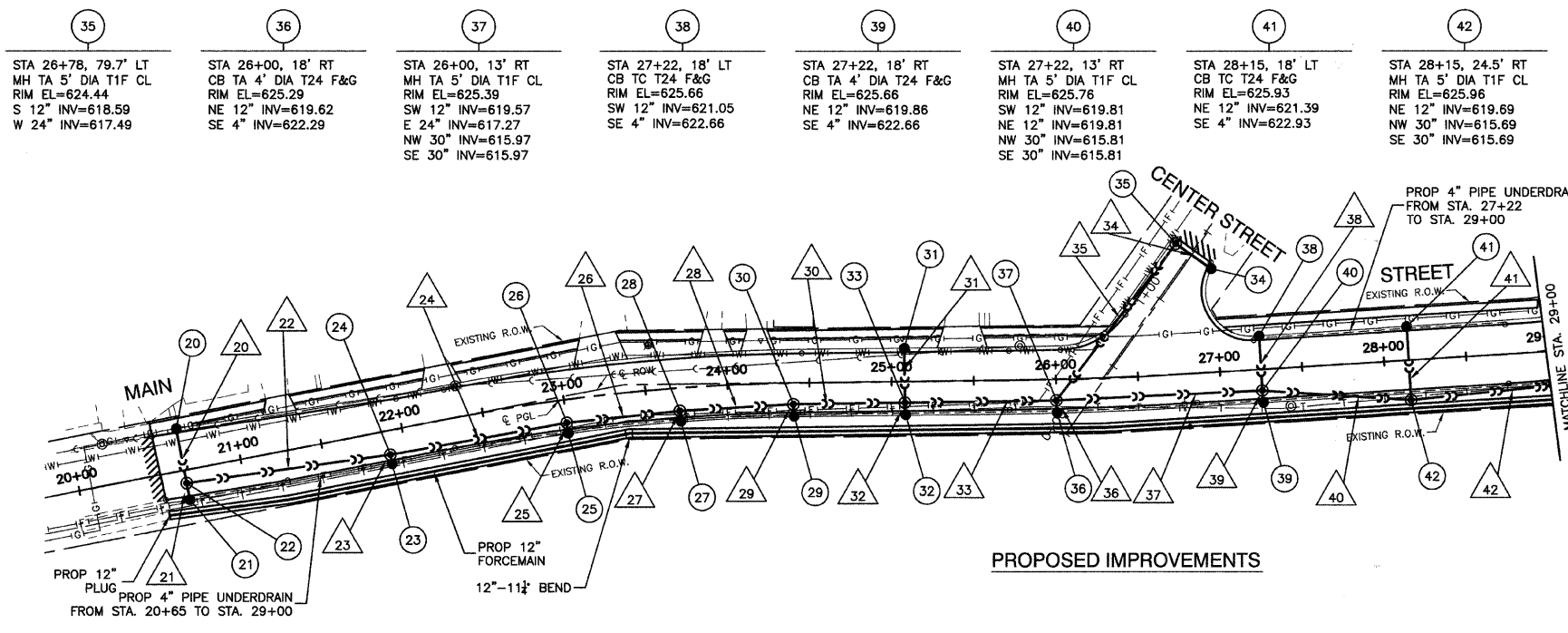
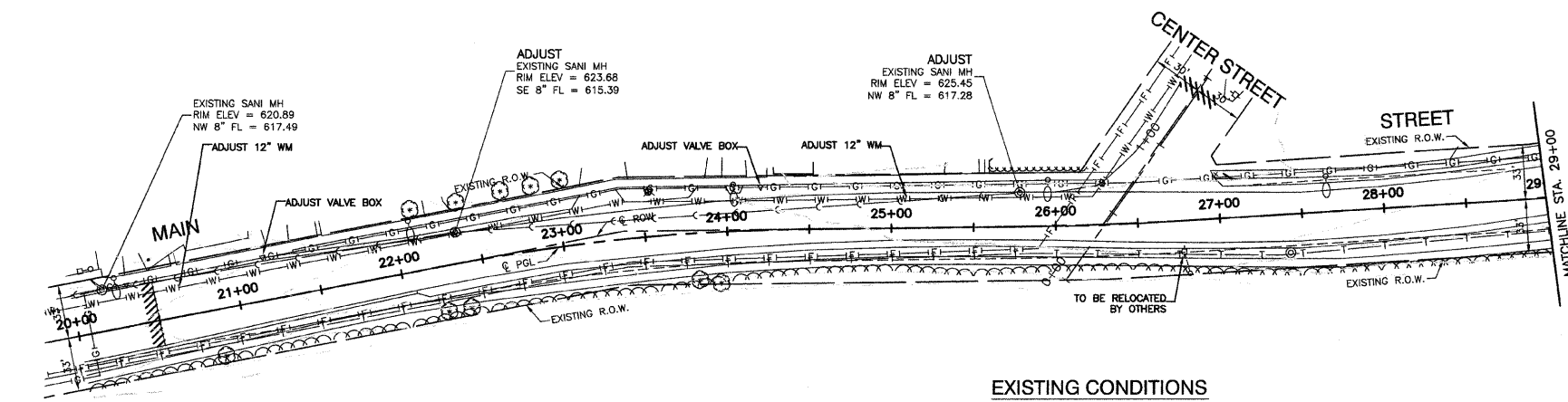
SECTION 4, TOWNSHIP 35, RANGE 14

FAU RITE	SECTION	COUNTY	TOTAL SHEETS	SHEET NO
3603	03-00049-00-PP	COOK	045	014
STA.		TO STA.		
FED. ROAD DIST. NO. 1		ILLINOIS	FED. AID PROJECT M8003 (559)	

CONTRACT #63078



20 STA 20+65, 23.3' LT CB TC T24 F&G RIM EL=621.88 SW 12" INV=617.18	27 STA 23+70, 18' RT CB TA 4' DIA T24 F&G RIM EL=624.56 NE 12" INV=618.81 SE 4" INV=621.56
21 STA 20+65, 15.9' RT CB TC T24 F&G RIM EL=622.03 NE 12" INV=616.94 SE 4" INV=619.03	28 STA 23+70, 14' RT MH TA 5' DIA T1F CL RIM EL=624.65 SW 12" INV=618.77 NW 30" INV=616.27 SE 30" INV=616.27
22 STA 20+65, 8' RT MH TA 5' DIA T1F CL RIM EL=622.19 SW 12" INV=616.87 NE 12" INV=616.87 SE 30" INV=616.67	29 STA 24+40, 18' RT CB TA 4' DIA T24 F&G RIM EL=624.81 NE 12" INV=619.23 SE 4" INV=621.81
23 STA 21+90, 18' RT CB TC T24 F&G RIM EL=623.26 NE 12" INV=619.04 SE 4" INV=620.26	30 STA 24+40, 13' RT MH TA 5' DIA T1F CL RIM EL=624.91 SW 12" INV=619.18 NW 30" INV=616.18 SE 30" INV=616.18
24 STA 21+90, 14.5' RT MH TA 5' DIA T1F CL RIM EL=623.33 SW 12" INV=619.00 NW 30" INV=616.50 SE 30" INV=616.50	31 STA 25+08, 18' LT CB TC T24 F&G RIM EL=625.36 SW 12" INV=620.32
25 STA 23+00, 18' RT CB TA 4' DIA T24 F&G RIM EL=624.10 NE 12" INV=618.50 SE 4" INV=621.10	32 STA 25+08, 18' RT CB TA 4' DIA T24 F&G RIM EL=625.01 NE 12" INV=619.44 SE 4" INV=622.01
26 STA 23+00, 14.5' RT MH TA 5' DIA T1F CL RIM EL=624.19 SW 12" INV=618.46 NW 30" INV=616.36 SE 30" INV=616.36	33 STA 25+08, 13' RT MH TA 5' DIA T1F CL RIM EL=625.11 SW 12" INV=619.39 NE 12" INV=619.39 NW 30" INV=616.09 SE 30" INV=616.09
	34 STA 26+97, 64.6' LT CB TC T24 F&G RIM EL=624.44 N 12" INV=619.80



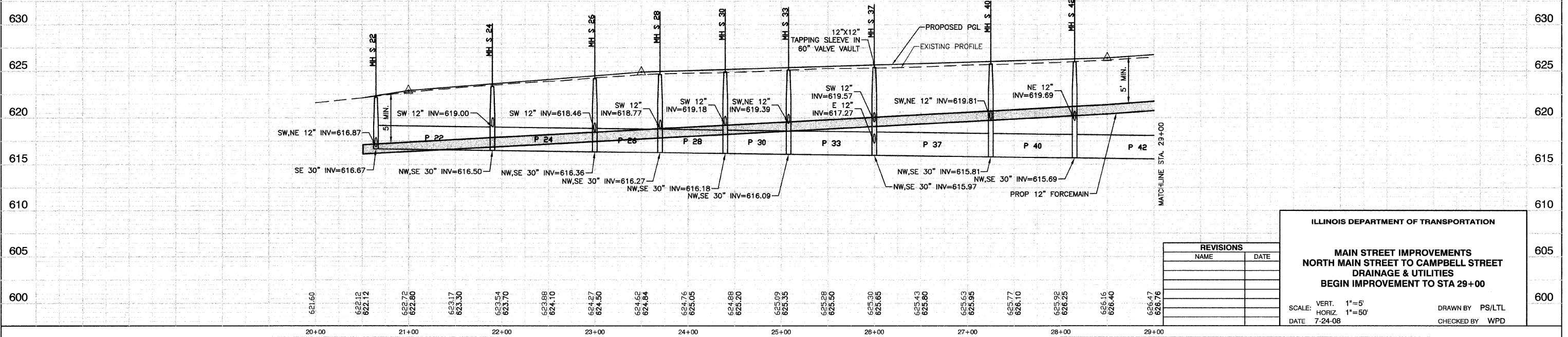
20	31'-12" SST2 @ 1.00% (8.1) (WMR)	33	92'-30" SST2 @ 0.13% (110.6)
21	7.85'-12" SST2 @ 1.00% (2.2)	34	24.3'-12" SST2 @ 5.00% (6.5) (WMR)
22	125'-30" SST2 @ 0.13% (45.3)	35	121'-24" SST2 @ 0.18% (102.2) (WMR)
23	3.5'-12" SST2 @ 1.00% (0.6)	36	5'-12" SST2 @ 1.00% (1.6)
24	110'-30" SST2 @ 0.13% (87.6)	37	122'-30" SST2 @ 0.13% (160.4)
25	4'-12" SST2 @ 1.00% (1.2)	38	31'-12" SST2 @ 4.00% (8.6)
26	70'-30" SST2 @ 0.13% (68.3)	39	5'-12" SST2 @ 1.00% (1.6)
27	4'-12" SST2 @ 1.00% (1.3)	40	94'-30" SST2 @ 0.13% (132)
28	70'-30" SST2 @ 0.13% (74.7)	41	42.5'-12" SST2 @ 4.00% (12.3)
29	5'-12" SST2 @ 1.00% (1.5)	42	154.5'-30" SST2 @ 0.13% (144.7)
30	68'-30" SST2 @ 0.13% (77.2)		
31	31'-12" SST2 @ 3.00% (8.8) (WMR)		
32	5'-12" SST2 @ 1.00% (1.5)		

NOTES:

- ALL OFFSETS TO CURBLINE STRUCTURES ARE GIVEN TO THE EDGE OF PAVEMENT. ALL OTHER OFFSETS ARE GIVEN TO THE CENTER OF THE STRUCTURE.
- ALL RIM ELEVATIONS TO CURBLINE STRUCTURES ARE EDGE OF PAVEMENT ELEVATIONS.
- (WMR) DENOTES WATER MAIN REQUIREMENTS.
- (XX.X) DENOTES CUBIC YARDS TRENCH BACKFILL.
- SEE LIGHTING PLANS FOR STREET LIGHT RELOCATIONS.
- 4" PIPE UNDERDRAINS SHALL BE CONSTRUCTED AT ONE FOOT FROM THE BACK OF CURB AND THREE FEET DEEP.

BENCH MARK: #96

N FLANGE OF HYD N SIDE GLENWOOD CHICAGO HEIGHTS RD BETWEEN GLENWOOD OAKS AND FOREST PRESERVE ELEVATION = 621.80



REVISIONS	
NAME	DATE

ILLINOIS DEPARTMENT OF TRANSPORTATION

**MAIN STREET IMPROVEMENTS
NORTH MAIN STREET TO CAMPBELL STREET
DRAINAGE & UTILITIES
BEGIN IMPROVEMENT TO STA 29+00**

SCALE: VERT. 1"=5'
HORIZ. 1"=50'

DATE 7-24-08

DRAWN BY PS/LTL
CHECKED BY WPD