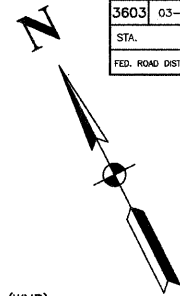


SECTION 3, TOWNSHIP 35, RANGE 14

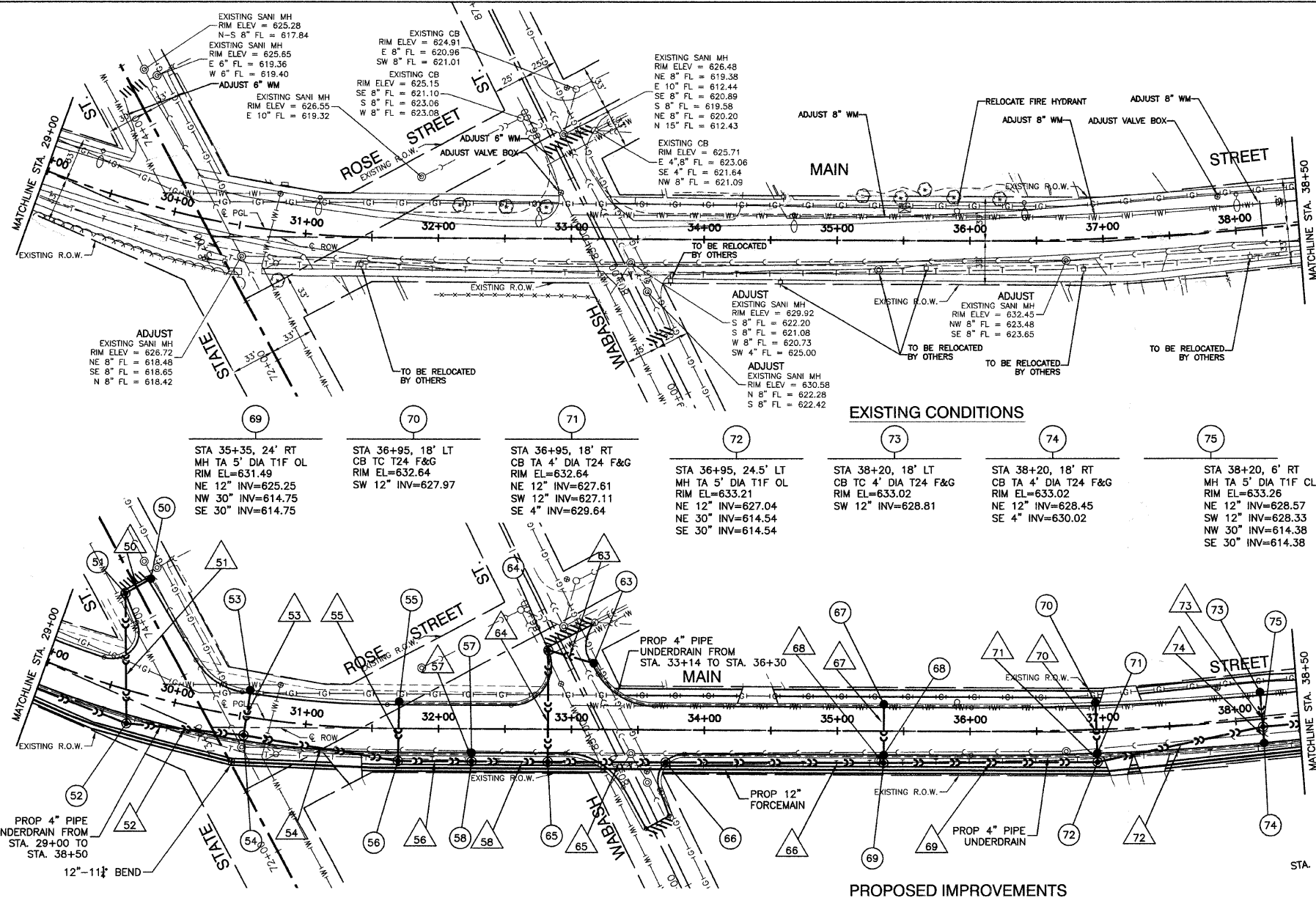
FAU RTR	SECTION	COUNTY	TOTAL SHEETS	SHEET NO
3603	03-00049-00-FP	COOK	045	015
STA.		TO STA.		
FED. ROAD DIST. NO. 1		ILLINOIS	FED. AID PROJECT MB003 (559)	

CONTRACT #63078



50	STA 29+54, 83.7' LT CB TC T24 F&G RIM EL=625.30 W 12" INV=620.52
51	STA 29+39, 68.7' LT MH TA 5' DIA T24F&G RIM EL=625.36 E 12" INV=619.47 SW 24" INV=618.47
52	STA 29+70, 24.5' RT MH TA 5' DIA T1F CL RIM EL=627.53 NE 24" INV=618.29 N 30" INV=615.49 SE 30" INV=615.49
53	STA 30+56, 18' LT CB TC T24 F&G RIM EL=627.39 SW 12" INV=622.66
54	STA 30+56, 14' RT MH TA 5' DIA T1F CL RIM EL=628.28 NE 12" INV=621.38 NW 30" INV=615.38 SE 30" INV=615.38
55	STA 31+70, 18' LT CB TC T24 F&G RIM EL=628.35 SW 12" INV=623.93 SE 4" INV=625.35
56	STA 31+70, 24.5' RT MH TA 5' DIA T1F OL RIM EL=628.70 NE 12" INV=622.23 NW 30" INV=615.23 SE 30" INV=615.23
57	STA 32+25, 18' RT CB TA 4' DIA T24 F&G RIM EL=628.91 SW 12" INV=623.22

58	STA 32+25, 24.5' RT MH TA 5' DIA T1F OL RIM EL=629.06 NE 12" INV=623.15 NW 30" INV=615.15 SE 30" INV=615.15
63	STA 33+14, 51.7' LT CB TC T24 F&G RIM EL=627.47 NW 12" INV=622.02 SE 4" INV=624.47
64	STA 32+82, 24.5' RT MH TA 5' DIA T1F OL RIM EL=628.84 NE 24" INV=617.58 NW 30" INV=615.08 SE 30" INV=615.08 SE 4" INV=625.84
65	STA 32+82, 24.5' RT MH TA 5' DIA T1F OL RIM EL=628.84 NE 24" INV=617.58 NW 30" INV=615.08 SE 30" INV=615.08 SE 4" INV=625.84
66	STA 33+17, 24.4' RT MH TA 5' DIA T24F F&G RIM EL=629.27 NW 30" INV=614.97 SE 30" INV=614.97
67	STA 35+35, 18' LT CB TC T24 F&G RIM EL=631.76 SW 12" INV=627.17 SE 4" INV=628.76
68	STA 35+35, 18' RT CB TA 4' DIA T24 F&G RIM EL=631.72 NE 12" INV=626.81 SW 12" INV=625.31 SE 4" INV=628.72

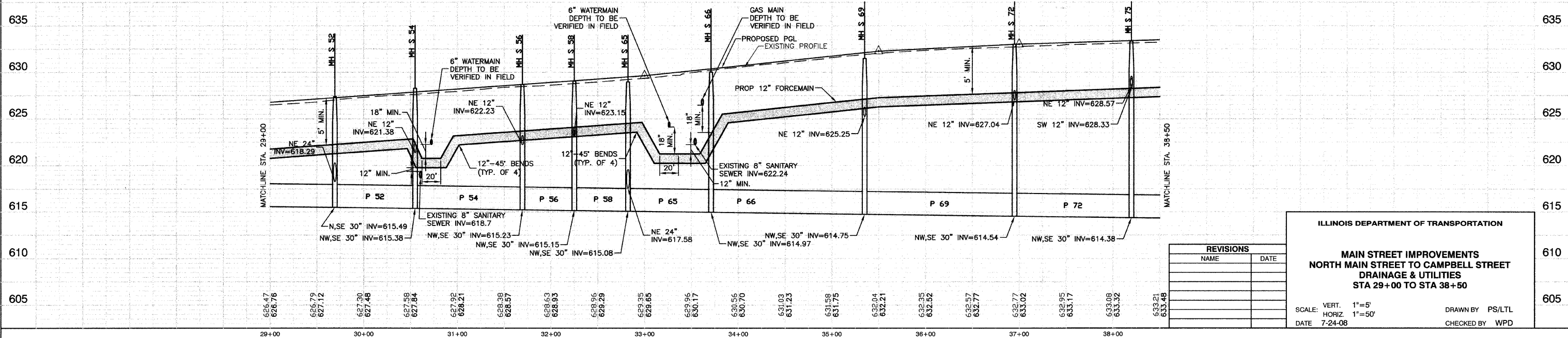


50	21'-12" SST2 @ 5.00% (5.9) (WMR)	65	88'-30" SST3 @ 0.13% (154.3)
51	98'-24" SST2 @ 0.18% (51.0) (WMR)	66	164.5'-30" SST3 @ 0.13% (27.4)
52	87'-30" SST2 @ 0.13% (148.2)	67	36'-12" SST2 @ 0.13% (7.7) (WMR)
53	32'-12" SST2 @ 4.00% (10.2)	68	6'-12" SST2 @ 1.00% (.8)
54	114.5'-30" SST3 @ 0.13% (231.3)	69	160'-30" SST3 @ 0.13% (0)
55	42.5'-12" SST2 @ 4.00% (11.4)	70	36'-12" SST2 @ 1.00% (7.7) (WMR)
56	55'-30" SST3 @ 0.13% (0)	71	6.5'-12" SST2 @ 1.00% (.7)
57	6.5'-12" SST2 @ 1.00% (.6)	72	127'-30" SST4 @ 0.13% (427.5)
58	57.5'-30" SST3 @ 0.13% (0)	73	24'-12" SST2 @ 1.00% (4.13) (WMR)
63	32.5'-12" SST2 @ 4.00% (8.3) (WMR)	74	12'-12" SST2 @ 1.00% (2.07)
64	84'-24" SST2 @ 0.18% (115.7) (WMR)		

NOTES:

- ALL OFFSETS TO CURBLINE STRUCTURES ARE GIVEN TO THE EDGE OF PAVEMENT. ALL OTHER OFFSETS ARE GIVEN TO THE CENTER OF THE STRUCTURE.
- ALL RIM ELEVATIONS TO CURBLINE STRUCTURES ARE EDGE OF PAVEMENT ELEVATIONS.
- (WMR) DENOTES WATER MAIN REQUIREMENTS.
- (XX.X) DENOTES CUBIC YARDS TRENCH BACKFILL.
- SEE LIGHTING PLANS FOR STREET LIGHT RELOCATIONS.
- 4" PIPE UNDERDRAINS SHALL BE CONSTRUCTED AT ONE FOOT FROM THE BACK OF CURB AND THREE FEET DEEP.

BENCH MARK: #96
N FLANGE OF HYD N SIDE GLENWOOD CHICAGO HEIGHTS RD BETWEEN GLENWOOD OAKS AND FOREST PRESERVE ELEVATION = 621.80



REVISIONS	
NAME	DATE

ILLINOIS DEPARTMENT OF TRANSPORTATION

**MAIN STREET IMPROVEMENTS
NORTH MAIN STREET TO CAMPBELL STREET
DRAINAGE & UTILITIES
STA 29+00 TO STA 38+50**

SCALE: VERT. 1"=5'
HORIZ. 1"=50'

DATE 7-24-08

DRAWN BY PS/LTL
CHECKED BY WPD