

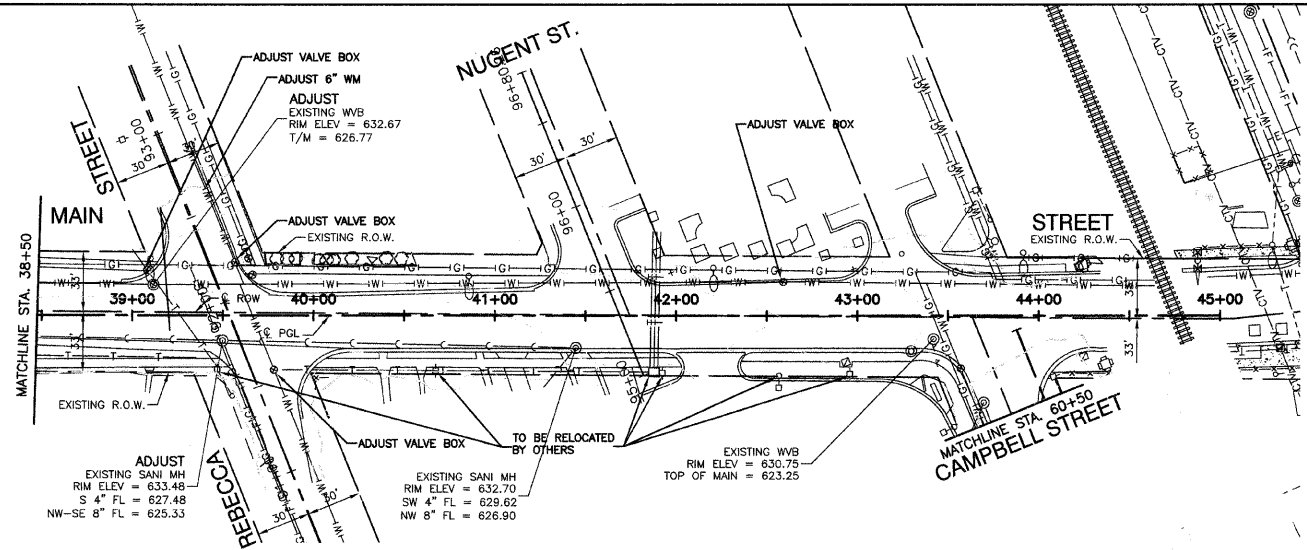
SECTION 3, TOWNSHIP 35, RANGE 14

FAU R/E	SECTION	COUNTY	TOTAL SHEETS	SHEET NO
3603	03-00049-00-FP	COOK	045	016
STA.		TO STA.		
FED. ROAD DIST. NO. 1		ILLINOIS	FED. AID PROJECT M8003 (559)	

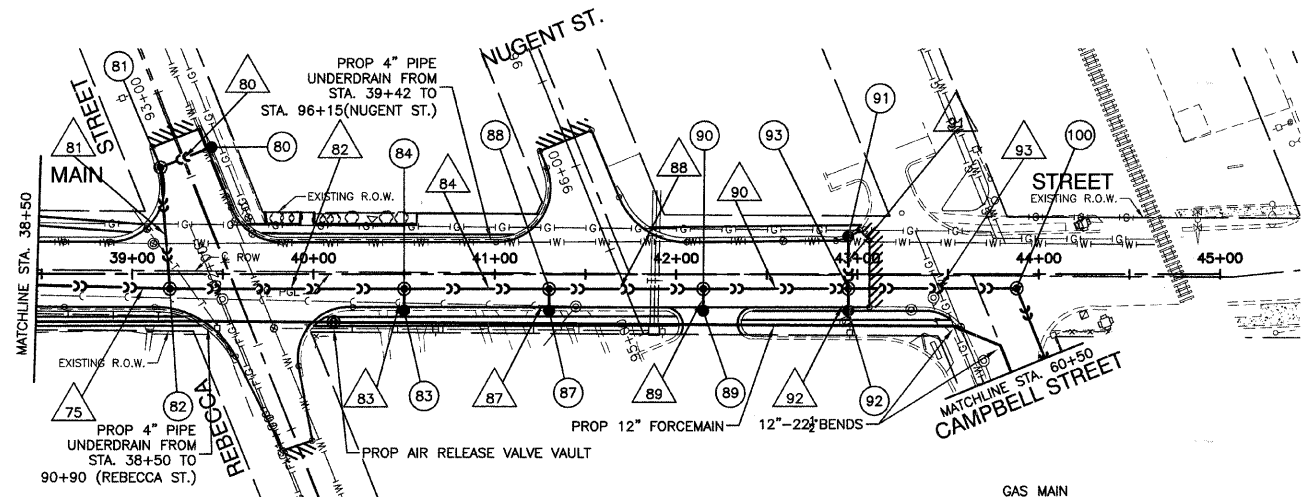
CONTRACT #63078

- 80 STA 39+42, 69.4' LT
CB TA 4" DIA T24 F&G
RIM EL=630.06
W 12" INV=625.09
SE 4" INV=627.06
- 81 STA 39+16, 59' LT
MH TA 5" DIA T24F&G
RIM EL=630.10
E 12" INV=623.97
SW 24" INV=620.77
- 82 STA 39+21, 8' RT
MH TA 5" DIA T1F CL
RIM EL=633.53
NE 24" INV=620.64
NW 30" INV=614.25
SE 36" INV=614.25
- 83 STA 40+50, 18' RT
CB TA 4" DIA T23 F&G
RIM EL=633.50
NE 12" INV=627.98
- 84 STA 40+50, 8' RT
MH TA 5" DIA T1F CL
RIM EL=633.60
SW 12" INV=627.88
NW 36" INV=614.08
SE 36" INV=614.08
- 87 STA 14+30, 18' RT
CB TA 4" DIA T23 F&G
RIM EL=633.03
NE 12" INV=626.08
- 88 STA 41+30, 8' RT
MH TA 5" DIA T1F CL
RIM EL=633.13
SW 12" INV=625.98
NW 36" INV=613.98
SE 36" INV=613.98

- 89 STA 42+15, 18' RT
CB TA 4" DIA T23 F&G
RIM EL=632.22
NE 12" INV=626.47
- 90 STA 42+15, 8' RT
MH TA 5" DIA T1F CL
RIM EL=632.32
SW 12" INV=626.37
NW 36" INV=613.87
SE 36" INV=613.87
- 91 STA 42+95, 18' LT
CB TA 4" DIA T24 F&G
RIM EL=631.25
SW 12" INV=628.20
- 92 STA 42+95, 18' RT
CB TA 4" DIA T23 F&G
RIM EL=631.43
NE 12" INV=625.86
- 93 STA 42+95, 8' RT
MH TA 5" DIA T1F CL
RIM EL=631.53
NE 12" INV=626.76
SW 12" INV=625.76
NW 36" INV=613.76
SE 36" INV=613.76
- 100 STA 43+88, 7.7' RT
MH TA 5" DIA T1F CL
RIM EL=630.40
NW 36" INV=613.84
S 36" INV=613.84



EXISTING CONDITIONS



PROPOSED IMPROVEMENTS

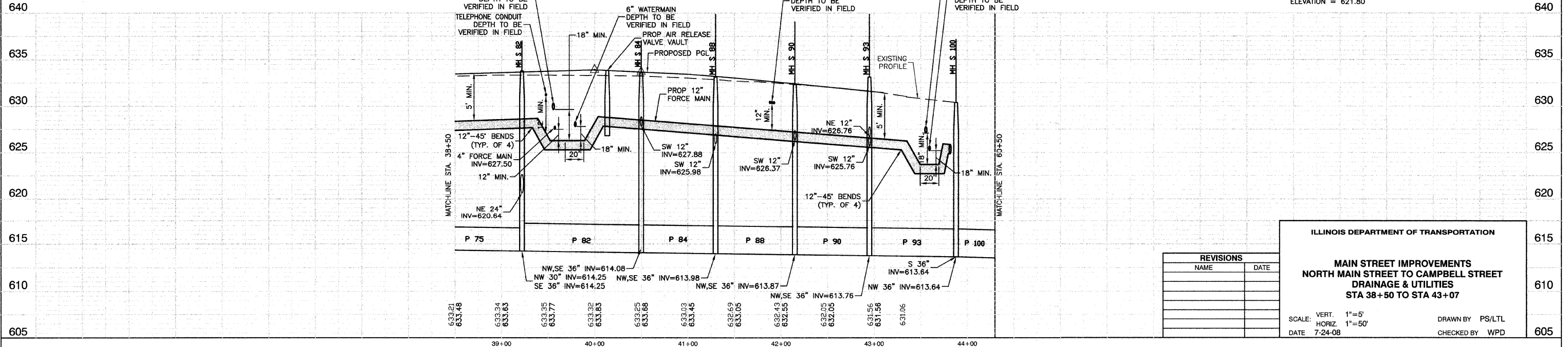
- 75 101'-30" SST4 @ 0.13% (0)
- 80 28'-12" SST2 @ 4.00% (8.4) (WMR)
- 81 67'-24" SST2 @ 0.20% (98)
- 82 129'-36" SST4 @ 0.13% (492)
- 83 10'-12" SST2 @ 1.00% (3)
- 84 80'-36" SST4 @ 0.13% (280.2)
- 87 10'-12" SST2 @ 1.00% (7)
- 88 85'-36" SST4 @ 0.13% (286.1)
- 89 10'-12" SST2 @ 1.00% (3.2)
- 90 80'-36" SST3 @ 0.13% (258.5)
- 91 36'-12" SST1 @ 4.00% (4.8) (WMR)
- 92 10'-12" SST2 @ 1.00% (3)
- 93 92.86'-36" SST3 @ 0.13% (279.1)

NOTES:

- ALL OFFSETS TO CURBLINE STRUCTURES ARE GIVEN TO THE EDGE OF PAVEMENT. ALL OTHER OFFSETS ARE GIVEN TO THE CENTER OF THE STRUCTURE.
- ALL RIM ELEVATIONS TO CURBLINE STRUCTURES ARE EDGE OF PAVEMENT ELEVATIONS.
- (WMR) DENOTES WATER MAIN REQUIREMENTS.
- (XX.X) DENOTES CUBIC YARDS TRENCH BACKFILL.
- SEE LIGHTING PLANS FOR STREET RELOCATIONS.
- 4" PIPE UNDERDRAINS SHALL BE CONSTRUCTED AT ONE FOOT FROM THE BACK OF CURB AND THREE FEET DEEP.

BENCH MARK: #96

N FLANGE OF HYD N SIDE GLENWOOD CHICAGO HEIGHTS RD BETWEEN GLENWOOD OAKS AND FOREST PRESERVE ELEVATION = 621.80



REVISIONS	
NAME	DATE

ILLINOIS DEPARTMENT OF TRANSPORTATION
MAIN STREET IMPROVEMENTS
NORTH MAIN STREET TO CAMPBELL STREET
DRAINAGE & UTILITIES
STA 38+50 TO STA 43+07

SCALE: VERT. 1"=5'
 HORIZ. 1"=50'
 DATE 7-24-08
 DRAWN BY PS/LTL
 CHECKED BY WPD