

STATE OF ILLINOIS
DEPARTMENT OF TRANSPORTATION
DIVISION OF HIGHWAYS

PLANS FOR PROPOSED
FEDERAL AID HIGHWAY

FAU 2774 / OAK PARK AVENUE
159TH STREET (FAU 0351) TO 183RD STREET (FAU 1622)
LOCAL AGENCY PAVEMENT PRESERVATION
STREET RESURFACING
PROJECT: M-9003(093)
SECTION NO.: 08-00106-00-RS
JOB NO.: C-91-035-09
VILLAGE OF TINLEY PARK
COOK COUNTY

F. A. U. RITE	SECTION	COUNTY	TOTAL SHEETS	SHEET NO.
2774	08-00106-00-RS	COOK	019	001
STA.		TO STA.		
FED. ROAD DIST. NO.		ILLINOIS	FED. AID PROJECT	

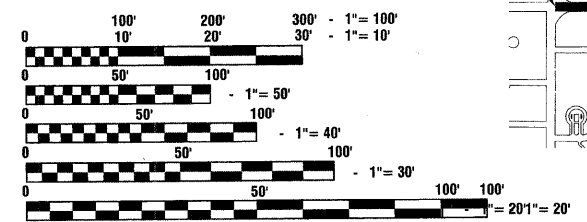
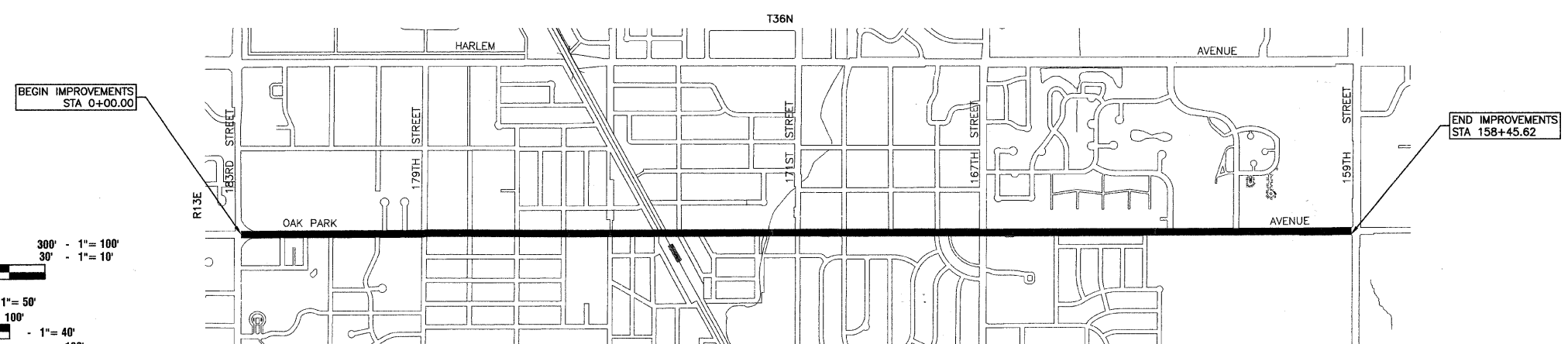
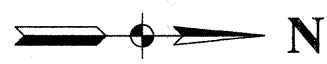
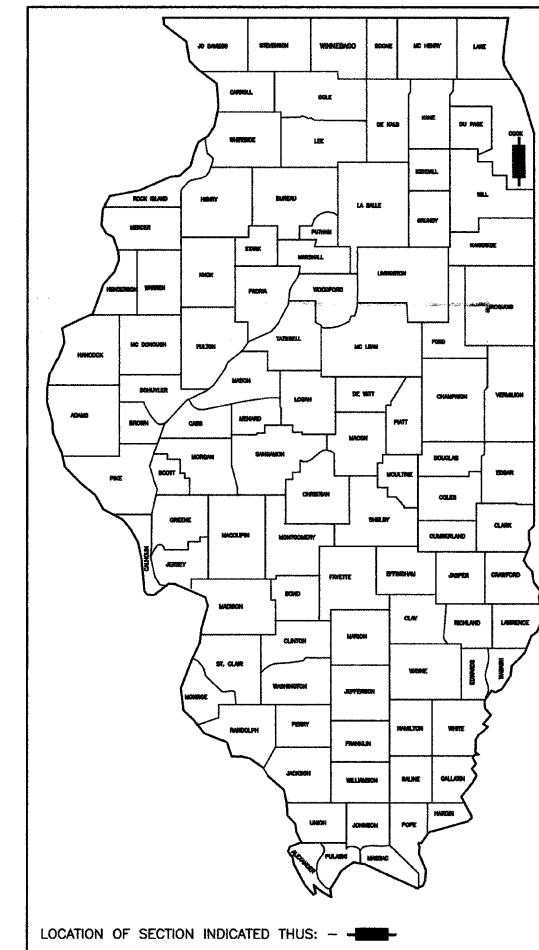
CONTRACT #63079

INDEX OF SHEETS

- 1 COVER SHEET, INDEX OF SHEETS, LOCATION MAP
INDEX OF STATE STANDARDS
- 2 SUMMARY OF QUANTITIES & GENERAL NOTES
- 3 TYPICAL CROSS SECTION
- 4-9 PAVEMENT PLAN
- 10-15 STRIPING PLAN
- 16-19 DISTRICT 1 STANDARD DETAILS

STATE STANDARDS

- 000001-05 STANDARD STANDARDS, ABBREVIATIONS AND PATTERNS
- 424001-05 CURB RAMPS FOR SIDEWALK
- 442201-03 CLASS C AND D PATCHES
- 602011 CATCH BASIN TYPE C
- 604001-02 FRAME AND LIDS TYPE 1
- 606001-03 CONCRETE CURB TYPE B AND COMBINATION CONCRETE CURB & GUTTER
- 701501-04 URBAN LANE CLOSURE, 2L, 2W, UNDIVIDED
- 701502-02 URBAN LANE CLOSURE, 2L, 2W, WITH BI-DIRECTIONAL LEFT TURN LANE
- 701601-05 URBAN LANE CLOSURE, MULTILANE, 1W OR 2W WITH NONTRAVERSABLE MEDIAN
- 701701-05 URBAN LANE CLOSURE, MULTILANE INTERSECTION
- 701801-03 LANE CLOSURE, MULTILANE, 1W OR 2W, CROSSWALK OR SIDEWALK CLOSURE,
- 701901 TRAFFIC CONTROL DEVICES
- 780001-01 TYPICAL PAVEMENT MARKINGS
- 886001 DETECTOR LOOP INSTALLATIONS
- 886006 TYPICAL LAYOUT FOR DETECTION LOOPS



LOCATION MAP

— INDICATES PROPOSED IMPROVEMENT
GROSS LENGTH= 15,846 FEET = 3.001 MILES
NET LENGTH= 15,402 FEET = 2.917 MILES

OAK PARK AVENUE
ADT=15,000 (2008)
POSTED SPEED LIMIT - 159TH ST TO 167TH ST = 40 mph
- 167TH ST TO 179TH ST = 30 mph
- 179TH ST TO 183RD ST = 35 mph
DESIGN DESIGNATION
MINOR ARTERIAL

FULL SIZE PLANS HAVE BEEN PREPARED USING STANDARD ENGINEERING SCALES, REDUCED SIZED PLANS WILL NOT CONFORM TO STANDARD SCALES, IN MAKING MEASUREMENTS ON REDUCED PLANS, THE ABOVE SCALES MAY BE USED.

J. U. L. I. E.
JOINT UTILITY LOCATION INFORMATION FOR EXCAVATION
1-800-892-0123 or 811

CONTRACT NO. 63079

STATE OF ILLINOIS DEPARTMENT OF TRANSPORTATION
DIVISION OF HIGHWAYS

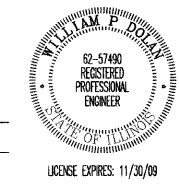
Approved: 7-30-08
Dalitch
Director of Public Works, Village of Tinley Park

Passed: SEPTEMBER 4, 2008
Christopher Holt
District 1 Engineer of Local Roads & Streets

Released for Bid Based on Limited Review: SEPTEMBER 5, 2008
Dina M. O'Keefe
Deputy Director of Highways, Region 1 Engineer

PRINTED BY THE AUTHORITY OF
THE STATE OF ILLINOIS

PREPARED BY OR UNDER THE DIRECT SUPERVISION OF:
William John
7/30/08



I.D.O.T. FIELD ENGINEER: MELCHOR MANGOBA 847-705-4408
CONSULTANTS: ROBINSON ENGINEERING, LTD. 708-331-6700
CONTACT ENGINEER: WILLIAM DOLAN

F. A. U. RITE	SECTION	COUNTY	TOTAL SHEETS	SHEET NO.
2774	08-00106-00-RS	COOK	019	002
STA.		TO STA.		
FED. ROAD DIST. NO.	ILLINOIS	FED. AID PROJECT		

CONTRACT #63079

SUMMARY OF QUANTITIES				PAVEMENT	MARKINGS	SIGNS	LANDSCAPE	LIGHTS	SIGNALS	TRAINING	
S.I.	CODE NO.	PAY ITEM	UNIT	QUAN	CONSTRUCTION TYPE CODE						
					I000	SFTY-1D	Y002-1C	Y003	Y030-1E	Y031	Y080
	35501308	HOT-MIX ASPHALT BASE COURSE, 6"	SQ YD	1750	1750						
	40600100	BITUMINOUS MATERIALS (PRIME COAT)	GALLON	3350	3350						
	40600300	AGGREGATE (PRIME COAT)	TON	70	70						
	40600982	HOT-MIX ASPHALT SURFACE REMOVAL - BUTT JOINT	SQ YD	400	400						
	40603310	HOT-MIX ASPHALT SURFACE COURSE, MIX "C", N50	TON	196	196						
	40603340	HOT-MIX ASPHALT SURFACE COURSE, MIX "D", N70	TON	3750	3750						
	42300300	PORTLAND CEMENT CONCRETE DRIVEWAY PAVEMENT, 7 INCH	SQ YD	175	175						
	42400200	PORTLAND CEMENT CONCRETE SIDEWALK, 5 INCH	SQ FT	5650	5650						
	42400800	DETECTABLE WARNINGS	SQ FT	380	380						
	44000196	HOT-MIX ASPHALT SURFACE REMOVAL, SPECIAL	SQ YD	9000	9000						
	44000200	DRIVEWAY PAVEMENT REMOVAL	SQ YD	1925	1925						
	44000500	COMBINATION CURB AND GUTTER REMOVAL	FOOT	7800	7800						
	44000600	SIDEWALK REMOVAL	SQ FT	5650	5650						
	44201349	CLASS C PATCHES, TYPE I, 10 INCH	SQ YD	160	160						
	44201353	CLASS C PATCHES, TYPE II, 10 INCH	SQ YD	700	700						
	44201357	CLASS C PATCHES, TYPE III, 10 INCH	SQ YD	390	390						
	44201359	CLASS C PATCHES, TYPE IV, 10 INCH	SQ YD	530	530						
	44201765	CLASS D PATCHES, TYPE II, 10 INCH	SQ YD	45	45						
	44201769	CLASS D PATCHES, TYPE III, 10 INCH	SQ YD	15	15						
	44201771	CLASS D PATCHES, TYPE IV, 10 INCH	SQ YD	105	105						
	60206905	CATCH BASINS, TYPE C, TYPE 1 FRAME, OPEN LID	EACH	13	13						
	60250400	CATCH BASINS TO BE ADJUSTED WITH NEW TYPE 1 FRAME, OPEN LID	EACH	1	1						
	60252800	CATCH BASINS TO BE RECONSTRUCTED	EACH	1	1						
	60266600	VALVE BOXES TO BE ADJUSTED	EACH	19	19						
	60500050	REMOVING CATCH BASINS	EACH	13	13						
	60603800	COMBINATION CONCRETE CURB AND GUTTER, TYPE B-6.12	FOOT	290	290						
	60605000	COMBINATION CONCRETE CURB AND GUTTER, TYPE B-6.24	FOOT	2500	2500						
	60605900	COMBINATION CONCRETE CURB AND GUTTER, TYPE B-9.12	FOOT	510	510						
	60609200	COMBINATION CONCRETE CURB AND GUTTER, TYPE M-6.12	FOOT	4500	4500						
	67100100	MOBILIZATION	L SUM	1	1						
	70101700	TRAFFIC CONTROL AND PROTECTION	L SUM	1	1						
	70300100	SHORT-TERM PAVEMENT MARKING	FOOT	11000	11000						
*	78000100	THERMOPLASTIC PAVEMENT MARKING - LETTERS AND SYMBOLS	SQ FT	1430	1430						
*	78000200	THERMOPLASTIC PAVEMENT MARKING - LINE 4"	FOOT	23400	23400						
*	78000400	THERMOPLASTIC PAVEMENT MARKING - LINE 6"	FOOT	1970	1970						
*	78000600	THERMOPLASTIC PAVEMENT MARKING - LINE 12"	FOOT	1510	1510						
*	78000650	THERMOPLASTIC PAVEMENT MARKING - LINE 24"	FOOT	440	440						
*	78003100	PREFORMED PLASTIC PAVEMENT MARKING, TYPE B - LETTERS AND SYMBOLS	SQ FT	230	230						
*	78003110	PREFORMED PLASTIC PAVEMENT MARKING, TYPE B - LINE 4"	FOOT	14500	14500						
*	78003130	PREFORMED PLASTIC PAVEMENT MARKING, TYPE B - LINE 6"	FOOT	240	240						
*	78003150	PREFORMED PLASTIC PAVEMENT MARKING, TYPE B - LINE 12"	FOOT	430	430						
*	78003180	PREFORMED PLASTIC PAVEMENT MARKING, TYPE B - LINE 24"	FOOT	80	80						
*	78100100	RAISED REFLECTIVE PAVEMENT MARKER	EACH	695	695						
	78300100	PAVEMENT MARKING REMOVAL	SQ FT	7440	7440						
	78300200	RAISED REFLECTIVE PAVEMENT MARKER REMOVAL	EACH	400	400						
*	88600600	DETECTOR LOOP REPLACEMENT	FOOT	710	710						
	Z0017400	DRAINAGE & UTILITY STRUCTURES TO BE ADJUSTED	EACH	169	169						
	Z0048665	RAILROAD PROTECTIVE LIABILITY INSURANCE	L SUM	1	1						
	X0322052	ASPHALT REJUVENATING AGENT	GALLON	3350	3350						
	X0324096	HOT IN-PLACE RECYCLING	SQ YD	33500	33500						
	XX001725	CRACK FILLING, SPECIAL	FOOT	16500	16500						

* - INDICATES SPECIALTY ITEMS

GENERAL NOTES

ROBINSON ENGINEERING FIELD OFFICE SHALL BE NOTIFIED TWO (2) WORKING DAYS PRIOR TO CONSTRUCTION. CALL (708) 331-6700

THE REMOVAL OF ANY DRIVEWAYS, PAVEMENT, CURB, ETC. SHALL BE ACCOMPLISHED BY MEANS OF A SAW CUT JOINT, AT THE DIRECTION OF THE ENGINEER. THIS WORK SHALL NOT BE PAID FOR SEPARATELY, BUT SHALL BE INCLUDED IN THE UNIT PRICE BID FOR THE VARIOUS REMOVAL ITEMS.

WHEN, IN THE CONSTRUCTION OPERATION, ANY LOOSE MATERIAL IS DEPOSITED IN THE FLOW LINE OF DITCHES, GUTTERS OR OTHER DRAINAGE STRUCTURES SO THAT THE NATURAL FLOW OF WATER IS OBSTRUCTED, IT SHALL BE REMOVED AT THE CLOSE OF EACH DAY BY THE CONTRACTOR AT HIS EXPENSE. AT THE CONCLUSION OF THE CONSTRUCTION OPERATIONS, ALL DRAINAGE STRUCTURES SHALL BE FREE FROM ALL DIRT AND DEBRIS. THIS WORK SHALL NOT BE PAID FOR SEPARATELY BUT SHALL BE CONSIDERED INCIDENTAL TO THE CONTRACT.

BEFORE STARTING ANY EXCAVATION, THE CONTRACTOR SHALL CALL J.U.L.I.E. AT (800) 892-0123 FOR FIELD LOCATIONS OF BURIED ELECTRIC, COMMUNICATIONS, AND GAS UTILITIES. (48 HOUR NOTIFICATION REQUIRED.)

IT SHALL BE THE CONTRACTORS RESPONSIBILITY TO VERIFY ALL DIMENSIONS AND CONDITIONS EXISTING IN THE FIELD PRIOR TO CONSTRUCTION AND ORDERING OF MATERIALS.

SCHEDULES INCLUDED IN THE PLANS HAVE BEEN PREPARED FROM FIELD NOTES. EXACT LOCATIONS FOR PATCHING SHALL BE DETERMINED IN THE FIELD BY THE ENGINEER.

AREAS DISTURBED BY CONSTRUCTION SHALL BE KEPT TO A MINIMUM. ALL AREAS DISTURBED UNNECESSARILY SHALL BE RESTORED AT THE CONTRACTORS EXPENSE.

UTILITIES INDICATED ON THE PLANS ARE PROVIDED OR THE CONTRACTORS USE AND ARE BASED UPON INFORMATION AVAILABLE AT THE TIME OF THE ADVERTISEMENT FOR BIDS. THE OWNER AND ENGINEER DO NOT GUARANTEE THE ACCURACY OF THE UTILITY INFORMATION.

ITEMS OF WORK LISTED IN THE SUMMARY OF QUANTITIES NOT SPECIFICALLY CALLED OUT ON THE PLANS SHALL BE PERFORMED AS DIRECTED BY THE ENGINEER.

ANY REFERENCE TO THE STANDARDS THROUGHOUT THE PLANS OR SPECIAL PROVISIONS SHALL BE INTERPRETED TO BE THE LATEST STANDARDS OF THE ILLINOIS DEPARTMENT OF TRANSPORTATION.

THE NOMINAL THICKNESS OF HOT-MIX ASPHALT MIXTURE STATED IN THE SPECIFICATIONS IS THE NOMINAL THICKNESS. DEVIATIONS FROM THE NOMINAL THICKNESS WILL BE PERMITTED WHEN SUCH DEVIATIONS OCCUR DUE TO IRREGULARITIES IN THE EXISTING SURFACE OR BASE ON WHICH THE HOT-MIX ASPHALT SURFACE IS PLACED.

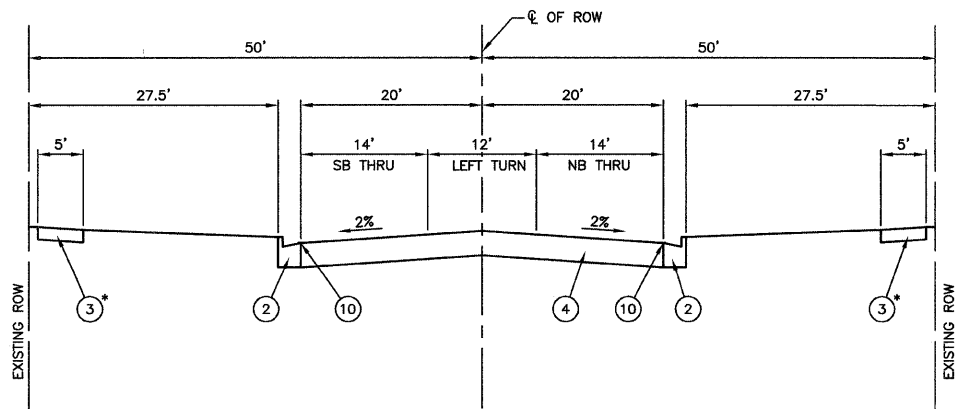
CONTRACTOR SHALL MILL EXISTING PAVEMENT PRIOR TO PATCHING.

REVISIONS	
NAME	DATE

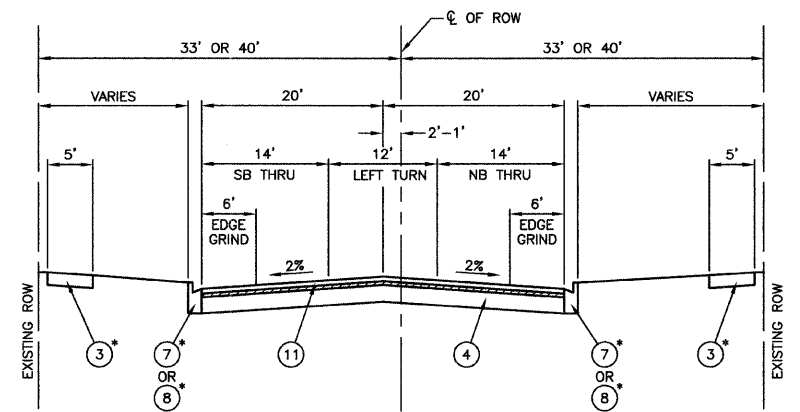
ILLINOIS DEPARTMENT OF TRANSPORTATION
OAK PARK AVENUE STREET RESURFACING
SUMMARY OF QUANTITIES & GENERAL NOTES

SCALE: VERT. NA
HORIZ. NA
DATE: 07/30/08
DRAWN BY: AG
CHECKED BY: WPD

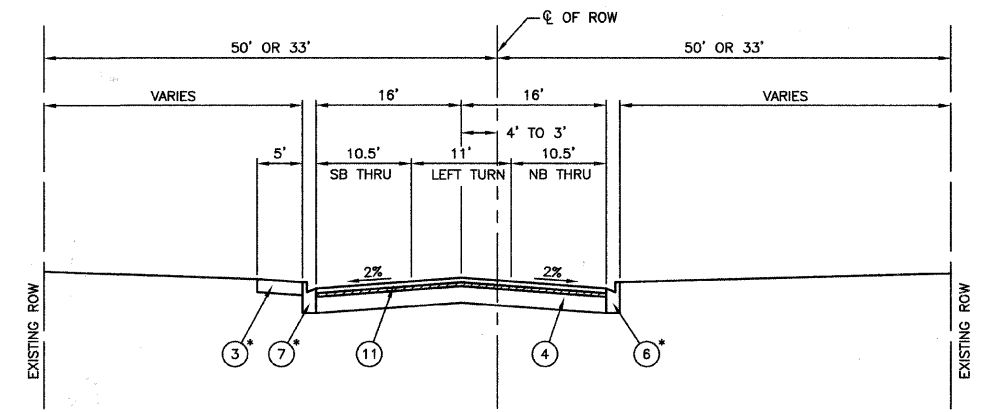
CONTRACT #63079



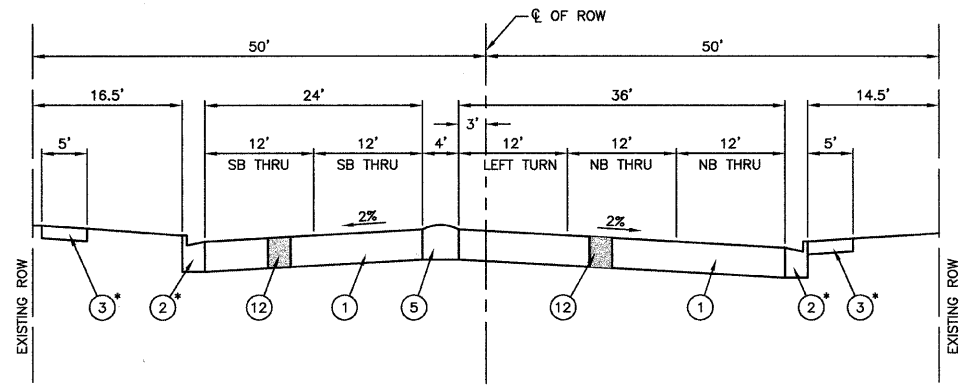
TYPICAL CROSS SECTION
STA 0+00 TO STA 27+06



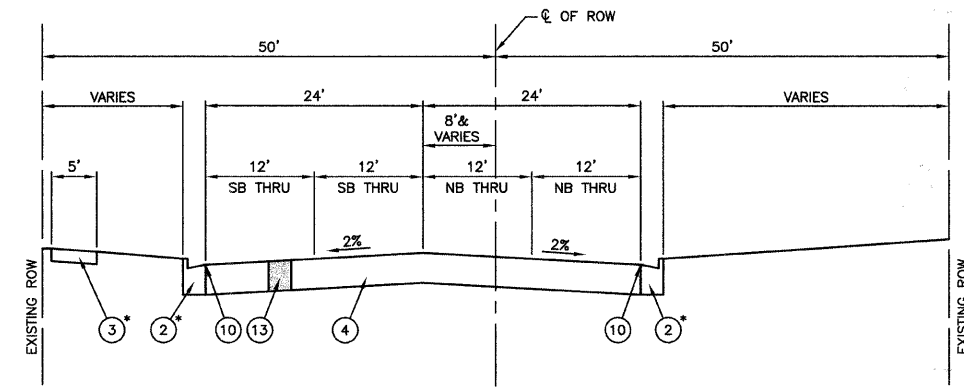
TYPICAL CROSS SECTION
STA 27+06 TO STA 78+66



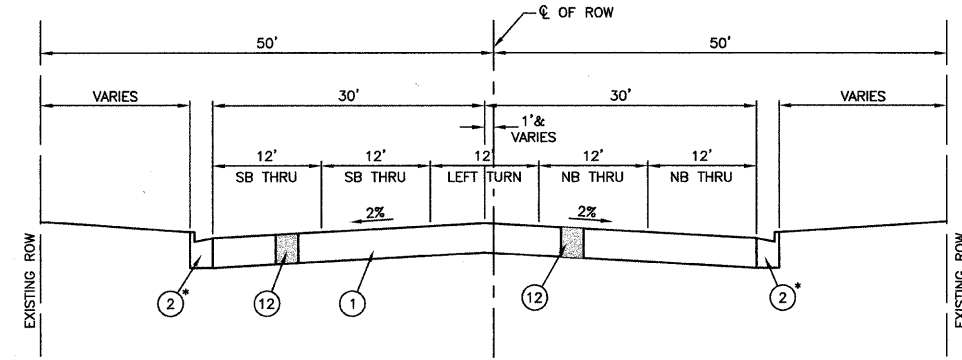
TYPICAL CROSS SECTION
STA 83+10 TO STA 99+96



TYPICAL CROSS SECTION
STA 99+96 TO STA 111+39



TYPICAL CROSS SECTION
STA 111+39 TO STA 149+22



TYPICAL CROSS SECTION
STA 149+22 TO STA 158+45

LEGEND

- ① EXISTING CONCRETE PAVEMENT - 12"
- ② EXISTING CURB AND GUTTER - TYPE B-6.24
- ③ EXISTING CONCRETE SIDEWALK
- ④ EXISTING HMA PAVEMENT - 10" ±
- ⑤ EXISTING CONCRETE MEDIAN
- ⑥ EXISTING CURB AND GUTTER - TYPE B-9.12
- ⑦ EXISTING CURB AND GUTTER - TYPE M-6.12
- ⑧ EXISTING CURB AND GUTTER - TYPE B-6.12
- ⑨ EXISTING CURB TYPE B
- ⑩ EDGE CRACK FILLING
- ⑪ HOT-MIX ASPHALT SURFACE COURSE, MIX "D", N70 - 1 1/2"
- ⑫ CLASS C PATCHES, 10"
- ⑬ CLASS D PATCHES, 10"

▨ 3/4" DEPTH OF HEATING, SCARIFICATION, ADDING REJUVENATING AGENT AND RECOMPACTING (SEE SPECIAL PROVISION)

*ITEM TO BE REMOVED AND REPLACED AS SHOWN ON THE PLANS AND AS DIRECTED BY THE ENGINEER.

**TYPE B CURB AND GUTTER TO BE REPLACED WITH TYPE B-6.12 CURB AND GUTTER.

HOT-MIX ASPHALT MIXTURE REQUIREMENTS		
MIXTURE TYPE	AC TYPE	AIR VOIDS
HOT-MIX ASPHALT SURFACE COURSE, MIX "D", N70 (IL-9.5mm); 1 1/2"	PG 64-22	4% AT 70 Gyr.
DRIVEWAYS		
HOT-MIX ASPHALT SURFACE COURSE, MIX "C", N50 (IL 9.5mm); 2"	PG 64-22	4% AT 50 Gyr
HOT-MIX ASPHALT BASE COURSE, (HMA BINDER IL-19mm); 6"	*PG 64-22	4% AT 50 Gyr
PATCHING		
CLASS D PATCHES (HMA BINDER, IL-19mm), 10"	*PG 64-22	4% AT 70 Gyr

THE UNIT WEIGHT USED TO CALCULATE ALL HOT-MIX ASPHALT SURFACE MIXTURE QUANTITIES IS 112 lbs/sq yd/ in.
*WHEN RAP EXCEEDS 20%, THE NEW ASPHALT BINDER IN THE MIX SHALL BE PG 58-22

REVISIONS	
NAME	DATE

ILLINOIS DEPARTMENT OF TRANSPORTATION

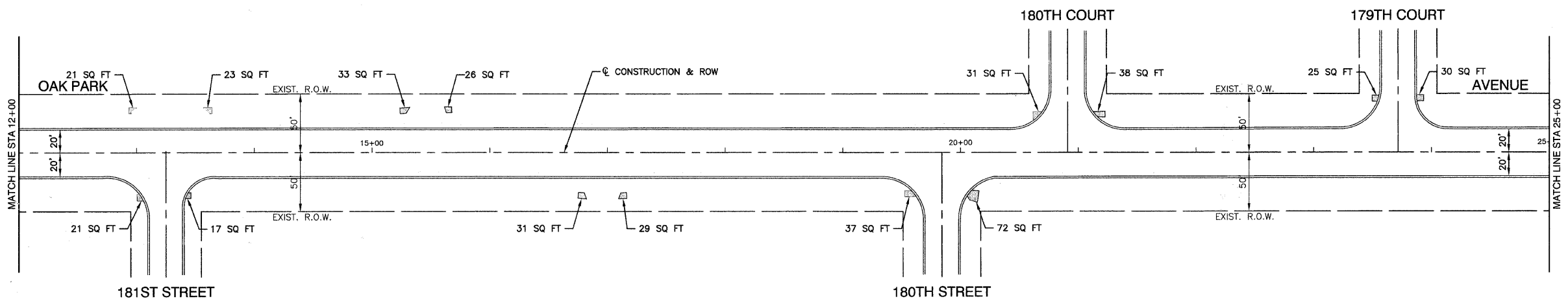
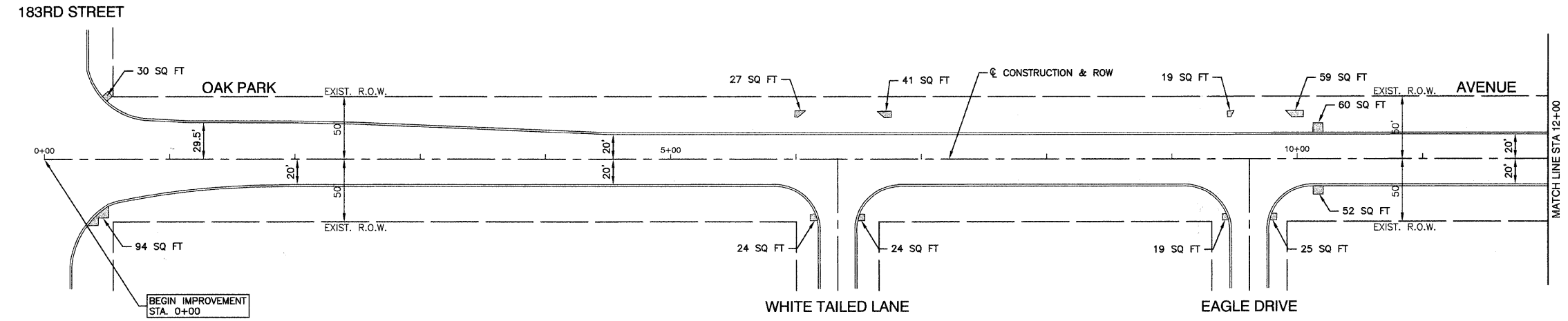
OAK PARK AVENUE STREET RESURFACING TYPICAL CROSS SECTIONS

SCALE: VERT. NA
HORIZ. NA
DATE: 07/30/08

DRAWN BY: AG
CHECKED BY: WPD

F. A. U. RITE	SECTION	COUNTY	TOTAL SHEETS	SHEET NO
2774	08-00106-00-RS	COOK	019	004
STA.		TO STA.		
FED. ROAD DIST. NO.		ILLINOIS	FED. AID PROJECT	

CONTRACT #63079



NOTE:
LIMIT OF CONSTRUCTION ON ALL SIDE STREETS IS THE RADIUS RETURN PLUS 10' BUTT JOINT

- LEGEND**
- CLASS D PATCHES
 - CLASS C PATCHES
 - HMA DRIVEWAY REMOVAL AND REPLACEMENT
 - CONCRETE DRIVEWAY REMOVAL AND REPLACEMENT
 - CONCRETE SIDEWALK REMOVAL AND REPLACEMENT
 - BUTT JOINTS
 - CURB & GUTTER REMOVAL AND REPLACEMENT
 - STRUCTURE TO BE ADJUSTED
 - STRUCTURE TO BE RECONSTRUCTED
 - STRUCTURE TO BE REMOVED AND REPLACED
 - DETECTOR LOOP

REVISIONS	
NAME	DATE

ILLINOIS DEPARTMENT OF TRANSPORTATION

**OAK PARK AVENUE
STREET RESURFACING
PAVEMENT PLANS**

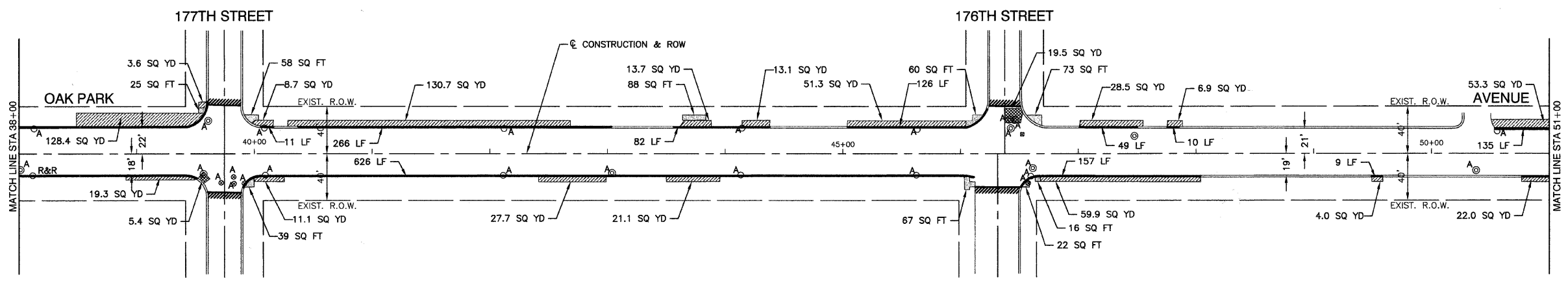
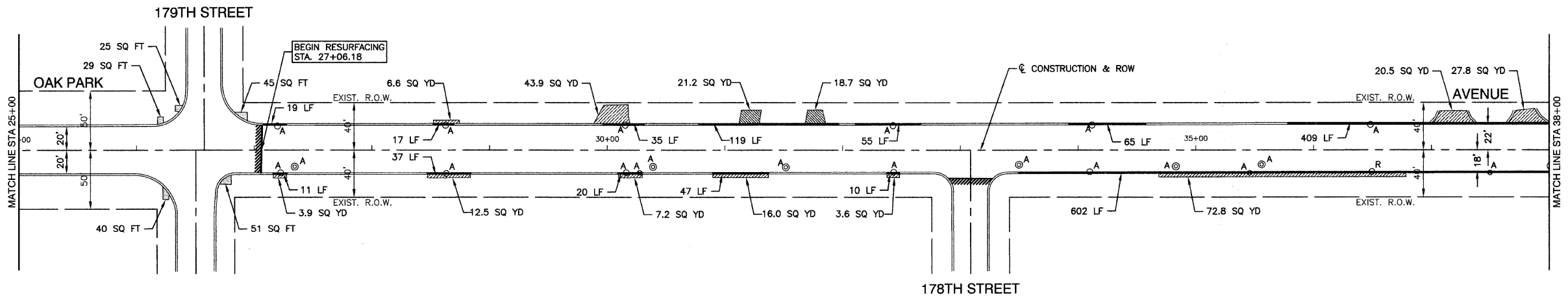
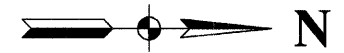
SCALE: VERT. NA
HORIZ. 1"=50'

DATE 07/30/08

DRAWN BY AG
CHECKED BY WPD

F. A. U. RITE.	SECTION	COUNTY	TOTAL SHEETS	SHEET NO.
2774	08-00106-00-RS	COOK	019	005
STA.		TO STA.		
FED. ROAD DIST. NO.		ILLINOIS	FED. AID PROJECT	

CONTRACT #63079



NOTE:
LIMIT OF CONSTRUCTION ON ALL SIDE STREETS IS THE RADIUS RETURN PLUS 10' BUTT JOINT

LEGEND

	CLASS D PATCHES
	CLASS C PATCHES
	HMA DRIVEWAY REMOVAL AND REPLACEMENT
	CONCRETE DRIVEWAY REMOVAL AND REPLACEMENT
	CONCRETE SIDEWALK REMOVAL AND REPLACEMENT
	BUTT JOINTS
	CURB & GUTTER REMOVAL AND REPLACEMENT
	STRUCTURE TO BE ADJUSTED
	STRUCTURE TO BE RECONSTRUCTED
	STRUCTURE TO BE REMOVED AND REPLACED
	DETECTOR LOOP

REVISIONS	
NAME	DATE

ILLINOIS DEPARTMENT OF TRANSPORTATION

OAK PARK AVENUE STREET RESURFACING PAVEMENT PLANS

SCALE: VERT. NA
HORIZ. 1"=50'

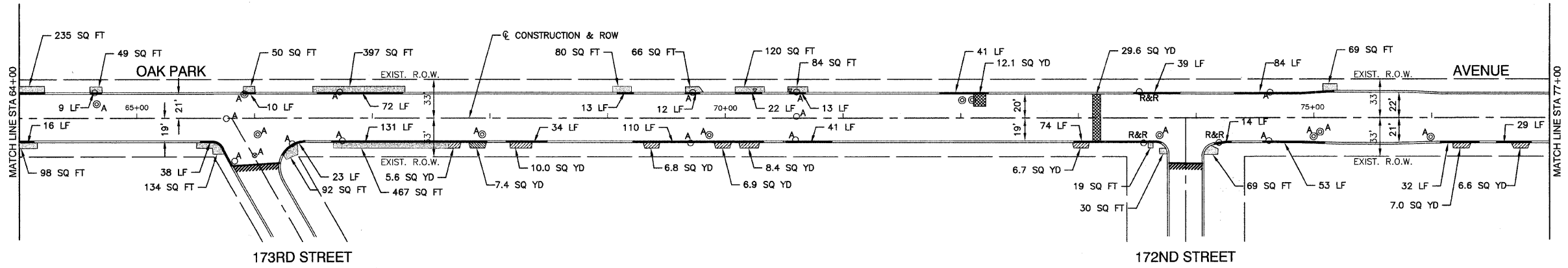
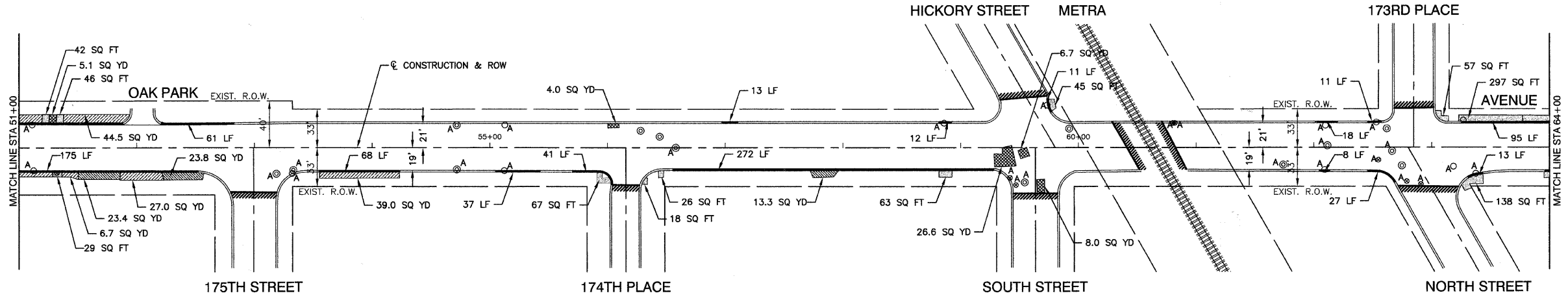
DATE: 07/30/08

DRAWN BY: AG
CHECKED BY: WPD

ROBINSON ENGINEERING, LTD.
17000 SOUTH PARK AVENUE, SOUTH HOLLAND, ILLINOIS 60473
(708) 381-6700 FAX (708) 381-3828
ILLINOIS DESIGN FIRM REGISTRATION NO. 124001228 07604-PLAN-01 - P02

F. A. U. RITE.	SECTION	COUNTY	TOTAL SHEETS	SHEET NO.
2774	08-00106-00-RS	COOK	019	006
STA.		TO STA.		
FED. ROAD DIST. NO.		ILLINOIS	FED. AID PROJECT	

CONTRACT #63079



NOTE:
LIMIT OF CONSTRUCTION ON ALL SIDE STREETS IS THE RADIUS RETURN PLUS 10' BUTT JOINT

- LEGEND**
- CLASS D PATCHES
 - CLASS C PATCHES
 - HMA DRIVEWAY REMOVAL AND REPLACEMENT
 - CONCRETE DRIVEWAY REMOVAL AND REPLACEMENT
 - CONCRETE SIDEWALK REMOVAL AND REPLACEMENT
 - BUTT JOINTS
 - CURB & GUTTER REMOVAL AND REPLACEMENT
 - STRUCTURE TO BE ADJUSTED
 - STRUCTURE TO BE RECONSTRUCTED
 - STRUCTURE TO BE REMOVED AND REPLACED
 - DETECTOR LOOP

REVISIONS	
NAME	DATE

ILLINOIS DEPARTMENT OF TRANSPORTATION

OAK PARK AVENUE STREET RESURFACING PAVEMENT PLANS

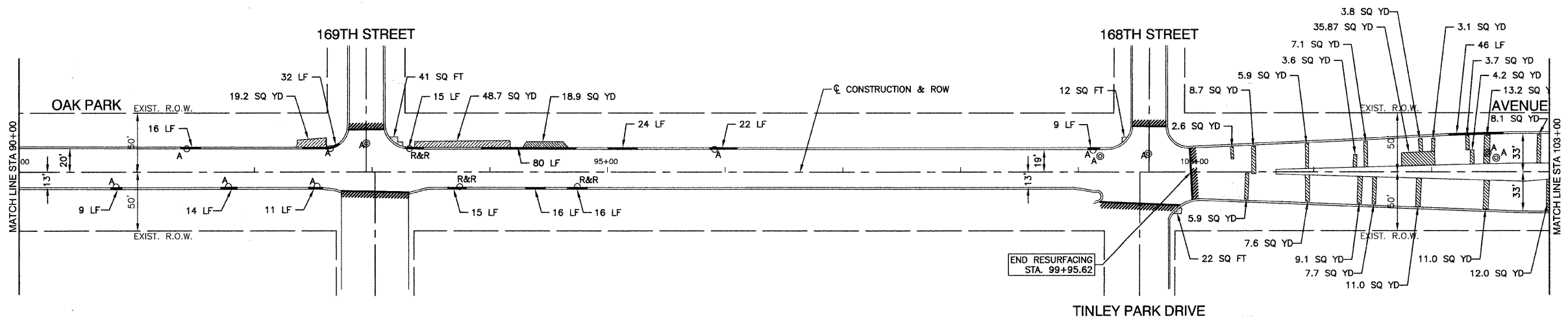
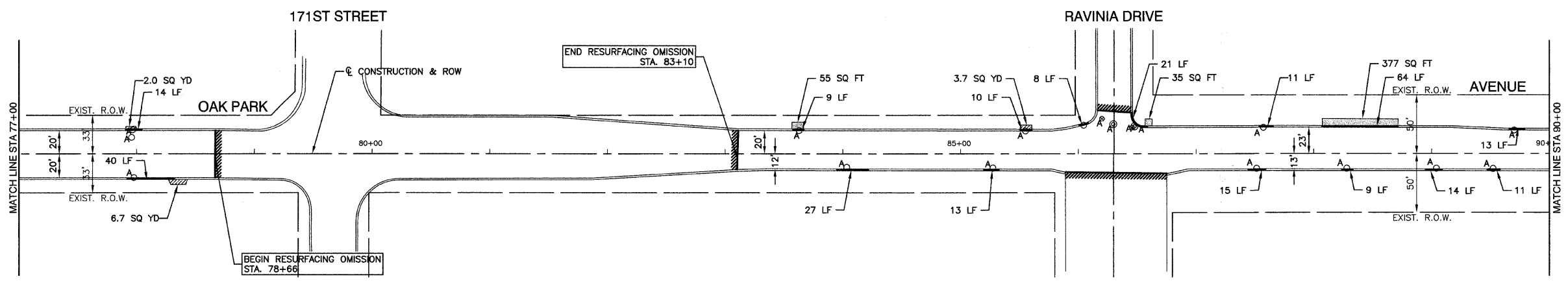
SCALE: VERT. NA
HORIZ. 1"=50'

DATE: 07/30/08

DRAWN BY: AG
CHECKED BY: WPD

F. A. U. RITE.	SECTION	COUNTY	TOTAL SHEETS	SHEET NO.
2774	08-00106-00-RS	COOK	019	007
STA.		TO STA.		
FED. ROAD DIST. NO.		ILLINOIS	FED. AID PROJECT	

CONTRACT #63079



NOTE:
LIMIT OF CONSTRUCTION ON ALL SIDE STREETS IS THE RADIUS RETURN PLUS 10' BUTT JOINT

LEGEND

	CLASS D PATCHES
	CLASS C PATCHES
	HMA DRIVEWAY REMOVAL AND REPLACEMENT
	CONCRETE DRIVEWAY REMOVAL AND REPLACEMENT
	CONCRETE SIDEWALK REMOVAL AND REPLACEMENT
	BUTT JOINTS
	CURB & GUTTER REMOVAL AND REPLACEMENT
	A STRUCTURE TO BE ADJUSTED
	R STRUCTURE TO BE RECONSTRUCTED
	R&R STRUCTURE TO BE REMOVED AND REPLACED
	DL DETECTOR LOOP

REVISIONS	
NAME	DATE

ILLINOIS DEPARTMENT OF TRANSPORTATION

OAK PARK AVENUE STREET RESURFACING PAVEMENT PLANS

SCALE: VERT. NA
HORIZ. 1"=50'

DATE: 07/30/08

DRAWN BY: AG
CHECKED BY: WPD

F. A. U. RITE.	SECTION	COUNTY	TOTAL SHEETS	SHEET NO.
2774	08-00106-00-RS	COOK	019	008
STA.		TO STA.		
FED. ROAD DIST. NO.		ILLINOIS	FED. AID PROJECT	

CONTRACT #63079

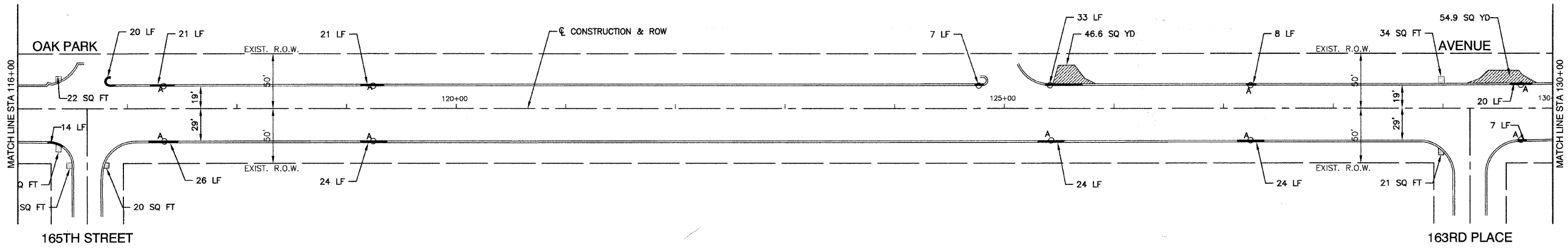
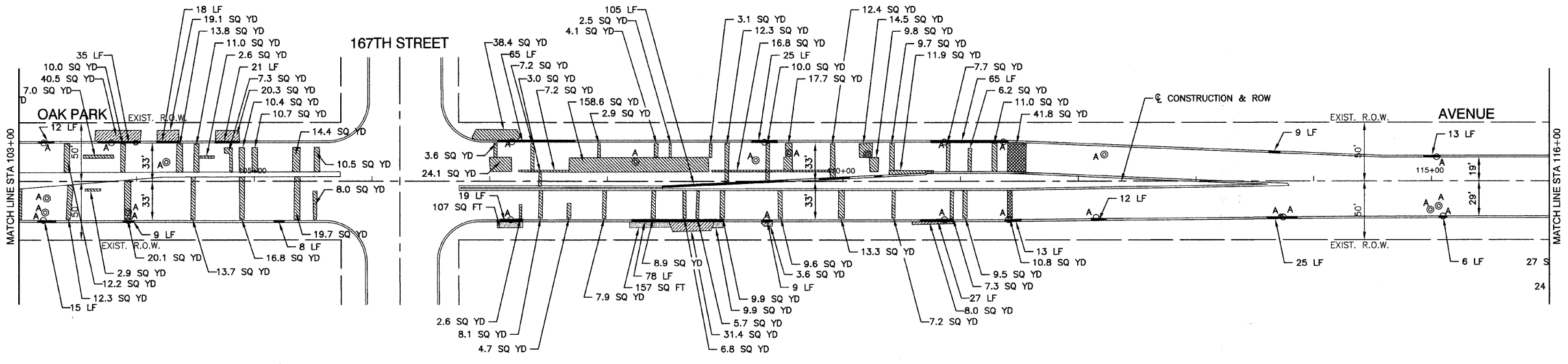


NOTE:

LIMIT OF CONSTRUCTION ON ALL SIDE STREETS IS THE RADIUS RETURN PLUS 10' BUTT JOINT

LEGEND

- CLASS D PATCHES
- CLASS C PATCHES
- HMA DRIVEWAY REMOVAL AND REPLACEMENT
- CONCRETE DRIVEWAY REMOVAL AND REPLACEMENT
- CONCRETE SIDEWALK REMOVAL AND REPLACEMENT
- BUTT JOINTS
- CURB & GUTTER REMOVAL AND REPLACEMENT
- STRUCTURE TO BE ADJUSTED
- STRUCTURE TO BE RECONSTRUCTED
- STRUCTURE TO BE REMOVED AND REPLACED
- DETECTOR LOOP



REVISIONS	
NAME	DATE

ILLINOIS DEPARTMENT OF TRANSPORTATION

**OAK PARK AVENUE
STREET RESURFACING
PAVEMENT PLANS**

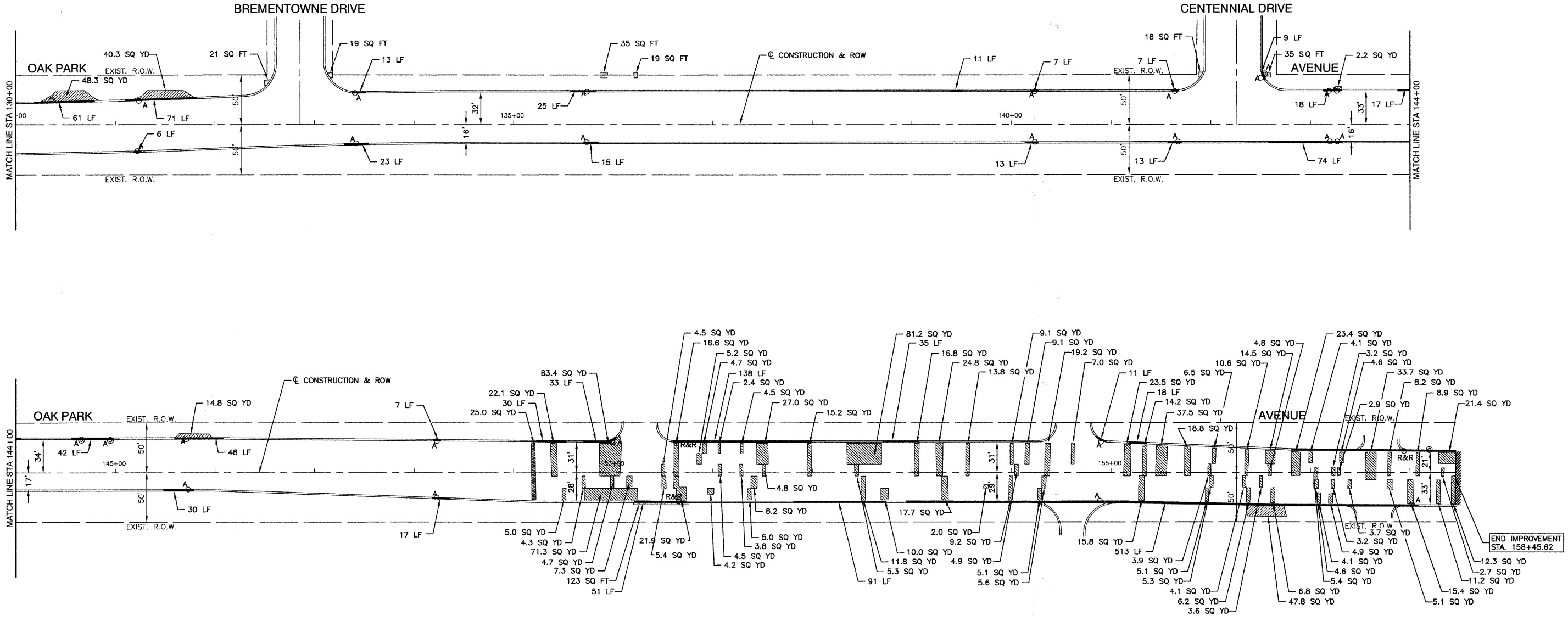
SCALE: VERT. NA
HORIZ 1"=50'

DATE 07/30/08

DRAWN BY AG
CHECKED BY WPD

P. A. I. NO.	SECTION	COUNTY	TOTAL SHEETS	SHEET NO.
2774	08-00106-00-RS	COOK	019	009
STA.	TO STA.			
FED. ROAD DIST. NO.	ILLINOIS	FED. AID PROJECT		

CONTRACT #63079



- LEGEND**
- CLASS D PATCHES
 - CLASS C PATCHES
 - HMA DRIVEWAY REMOVAL AND REPLACEMENT
 - CONCRETE DRIVEWAY REMOVAL AND REPLACEMENT
 - CONCRETE SIDEWALK REMOVAL AND REPLACEMENT
 - BUTT JOINTS
 - CURB & GUTTER REMOVAL AND REPLACEMENT
 - STRUCTURE TO BE ADJUSTED
 - STRUCTURE TO BE RECONSTRUCTED
 - STRUCTURE TO BE REMOVED AND REPLACED
 - DETECTOR LOOP

NOTE:
LIMIT OF CONSTRUCTION ON ALL SIDE STREETS IS THE RADIUS RETURN PLUS 10' BUTT JOINT

REVISIONS	
NAME	DATE

ILLINOIS DEPARTMENT OF TRANSPORTATION

**OAK PARK AVENUE
STREET RESURFACING
PAVEMENT PLANS**

SCALE: VERT. NA
HORIZ. 1"=50'

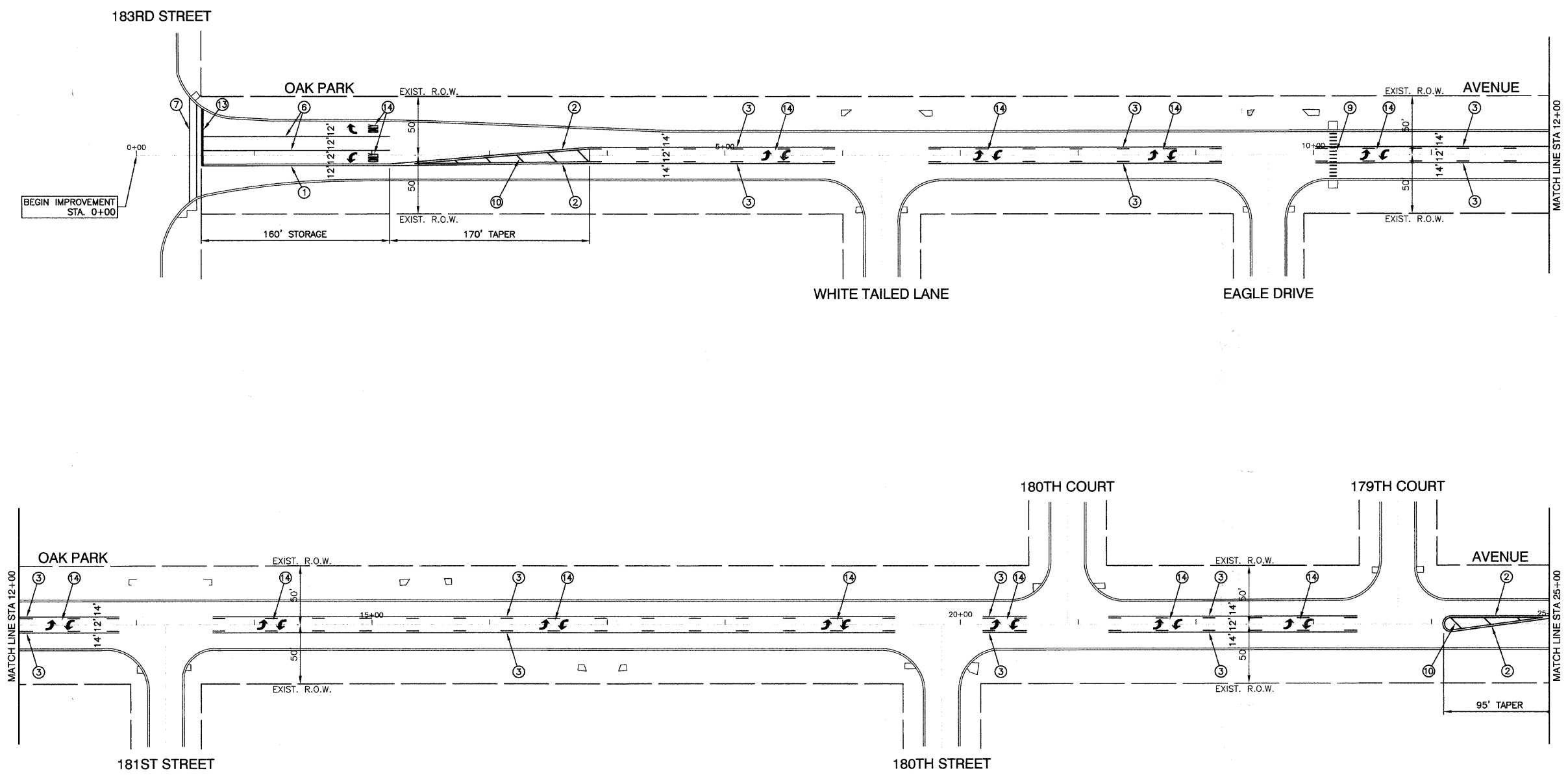
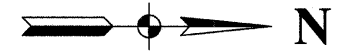
DATE 07/30/08

DRAWN BY AG
CHECKED BY WPD

ROBINSON ENGINEERING, LTD.
17000 SOUTH PARK AVENUE SOUTH HOLLAND, ILLINOIS 60473
(708) 321-5700 FAX (708) 321-3228
ILLINOIS DESIGN FIRM REGISTRATION NO. 184021128

F. A. U. NO.	SECTION	COUNTY	TOTAL SHEETS	SHEET NO.
2774	08-00106-00-RS	COOK	019	010
STA.		TO STA.		
FED. ROAD DIST. NO.		ILLINOIS	FED. AID PROJECT	

CONTRACT #63079



PAVEMENT MARKING LEGEND

- | | |
|--|---|
| ① THERMOPLASTIC DOUBLE 4" YELLOW CENTERLINE (11" C/C) | ⑮ PREFORMED PLASTIC DOUBLE 4" YELLOW CENTERLINE (11" C/C) |
| ② THERMOPLASTIC DOUBLE 4" YELLOW MEDIAN LINE (11" C/C) | ⑯ PREFORMED PLASTIC DOUBLE 4" YELLOW MEDIAN LINE (11" C/C) |
| ③ THERMOPLASTIC 4" YELLOW LINE W/ 4" YELLOW DASH LINE (10' LINE-30' SPACE)(5 1/2" C/C) | ⑰ PREFORMED PLASTIC 4" WHITE DASH LINE (10' LINE-30' SPACE) |
| ④ THERMOPLASTIC 4" WHITE DASH LINE (10' LINE-30' SPACE) | ⑱ PREFORMED PLASTIC 4" YELLOW MEDIAN LINE |
| ⑤ THERMOPLASTIC 4" YELLOW MEDIAN LINE | ⑲ PREFORMED PLASTIC 4" WHITE EDGE LINE |
| ⑥ THERMOPLASTIC 6" WHITE LANE LINE | ⑳ PREFORMED PLASTIC 6" WHITE LANE LINE |
| ⑦ THERMOPLASTIC DOUBLE 6" WHITE CROSSWALK LINE (6' APART) | ㉑ PREFORMED PLASTIC 12" WHITE CROSSWALK LINE (2' APART) |
| ⑧ THERMOPLASTIC 6" WHITE DASH LINE (2' LINE-6' SPACE) | ㉒ PREFORMED PLASTIC 12" YELLOW DIAGONAL (20' C/C) |
| ⑨ THERMOPLASTIC 12" WHITE CROSSWALK LINE (2' APART) | ㉓ PREFORMED PLASTIC 24" WHITE STOP BAR |
| ⑩ THERMOPLASTIC 12" YELLOW DIAGONAL (20' C/C) | ㉔ PREFORMED PLASTIC LETTERS AND SYMBOLS |
| ⑪ THERMOPLASTIC 12" WHITE LINE | |
| ⑫ THERMOPLASTIC 12" WHITE DIAGONAL (2' APART) | |
| ⑬ THERMOPLASTIC 24" WHITE STOP BAR | |
| ⑭ THERMOPLASTIC LETTERS AND SYMBOLS | |

NOTE
PLEASE REFER TO IDOT DISTRICT 1 STANDARD TC-10 (SHEET #18) FOR PLACEMENT OF RAISED REFLECTIVE PAVEMENT MARKERS FROM STA 27+06 TO STA 78+66 AND FROM STA 83+10 TO STA 99+96

REVISIONS	
NAME	DATE

ILLINOIS DEPARTMENT OF TRANSPORTATION

OAK PARK AVENUE STREET RESURFACING PAVEMENT MARKINGS

SCALE: VERT. NA
HORIZ. 1"=50'

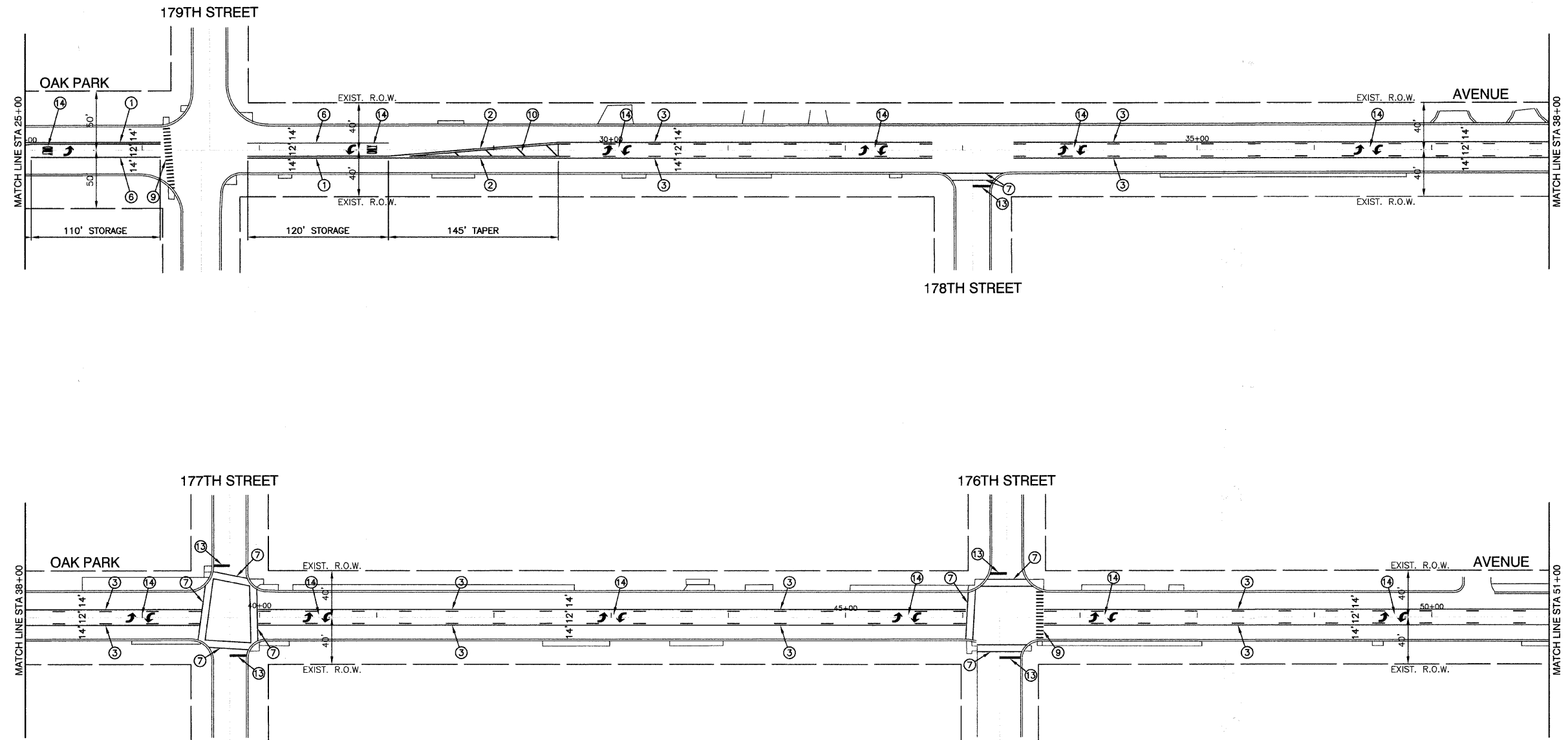
DATE: 07/30/08

DRAWN BY: EDG
CHECKED BY: WPD

ROBINSON ENGINEERING, LTD.
17000 SOUTH PARK AVENUE SOUTH HOLLAND, ILLINOIS 60473
(708) 981-8700 FAX (708) 981-8828
ILLINOIS DESIGN FIRM REGISTRATION NO. 186001128 07804-PV/MK-01 - P01

F. A. U. SITE	SECTION	COUNTY	TOTAL SHEETS	SHEET NO.
2774	08-00106-00-RS	COOK	019	011
STA.		TO STA.		
FED. ROAD DIST. NO.	ILLINOIS	FED. AID PROJECT		

CONTRACT #63079



PAVEMENT MARKING LEGEND

- | | |
|--|---|
| ① THERMOPLASTIC DOUBLE 4" YELLOW CENTERLINE (11" C/C) | ⑮ PREFORMED PLASTIC DOUBLE 4" YELLOW CENTERLINE (11" C/C) |
| ② THERMOPLASTIC DOUBLE 4" YELLOW MEDIAN LINE (11" C/C) | ⑯ PREFORMED PLASTIC DOUBLE 4" YELLOW MEDIAN LINE (11" C/C) |
| ③ THERMOPLASTIC 4" YELLOW LINE W/ 4" YELLOW DASH LINE (10' LINE-30' SPACE)(5 1/2" C/C) | ⑰ PREFORMED PLASTIC 4" WHITE DASH LINE (10' LINE-30' SPACE) |
| ④ THERMOPLASTIC 4" WHITE DASH LINE (10' LINE-30' SPACE) | ⑱ PREFORMED PLASTIC 4" YELLOW MEDIAN LINE |
| ⑤ THERMOPLASTIC 4" YELLOW MEDIAN LINE | ⑲ PREFORMED PLASTIC 4" WHITE EDGE LINE |
| ⑥ THERMOPLASTIC 6" WHITE LANE LINE | ⑳ PREFORMED PLASTIC 6" WHITE LANE LINE |
| ⑦ THERMOPLASTIC DOUBLE 6" WHITE CROSSWALK LINE (6' APART) | ㉑ PREFORMED PLASTIC 12" WHITE CROSSWALK LINE (2' APART) |
| ⑧ THERMOPLASTIC 6" WHITE DASH LINE (2' LINE-6' SPACE) | ㉒ PREFORMED PLASTIC 12" YELLOW DIAGONAL (20' C/C) |
| ⑨ THERMOPLASTIC 12" WHITE CROSSWALK LINE (2' APART) | ㉓ PREFORMED PLASTIC 24" WHITE STOP BAR |
| ⑩ THERMOPLASTIC 12" YELLOW DIAGONAL (20' C/C) | ㉔ PREFORMED PLASTIC LETTERS AND SYMBOLS |
| ⑪ THERMOPLASTIC 12" WHITE LINE | |
| ⑫ THERMOPLASTIC 12" WHITE DIAGONAL (2' APART) | |
| ⑬ THERMOPLASTIC 24" WHITE STOP BAR | |
| ⑭ THERMOPLASTIC LETTERS AND SYMBOLS | |

NOTE

PLEASE REFER TO IDOT DISTRICT 1 STANDARD TC-10 (SHEET #18) FOR PLACEMENT OF RAISED REFLECTIVE PAVEMENT MARKERS FROM STA 27+06 TO STA 78+66 AND FROM STA 83+10 TO STA 99+96

ILLINOIS DEPARTMENT OF TRANSPORTATION

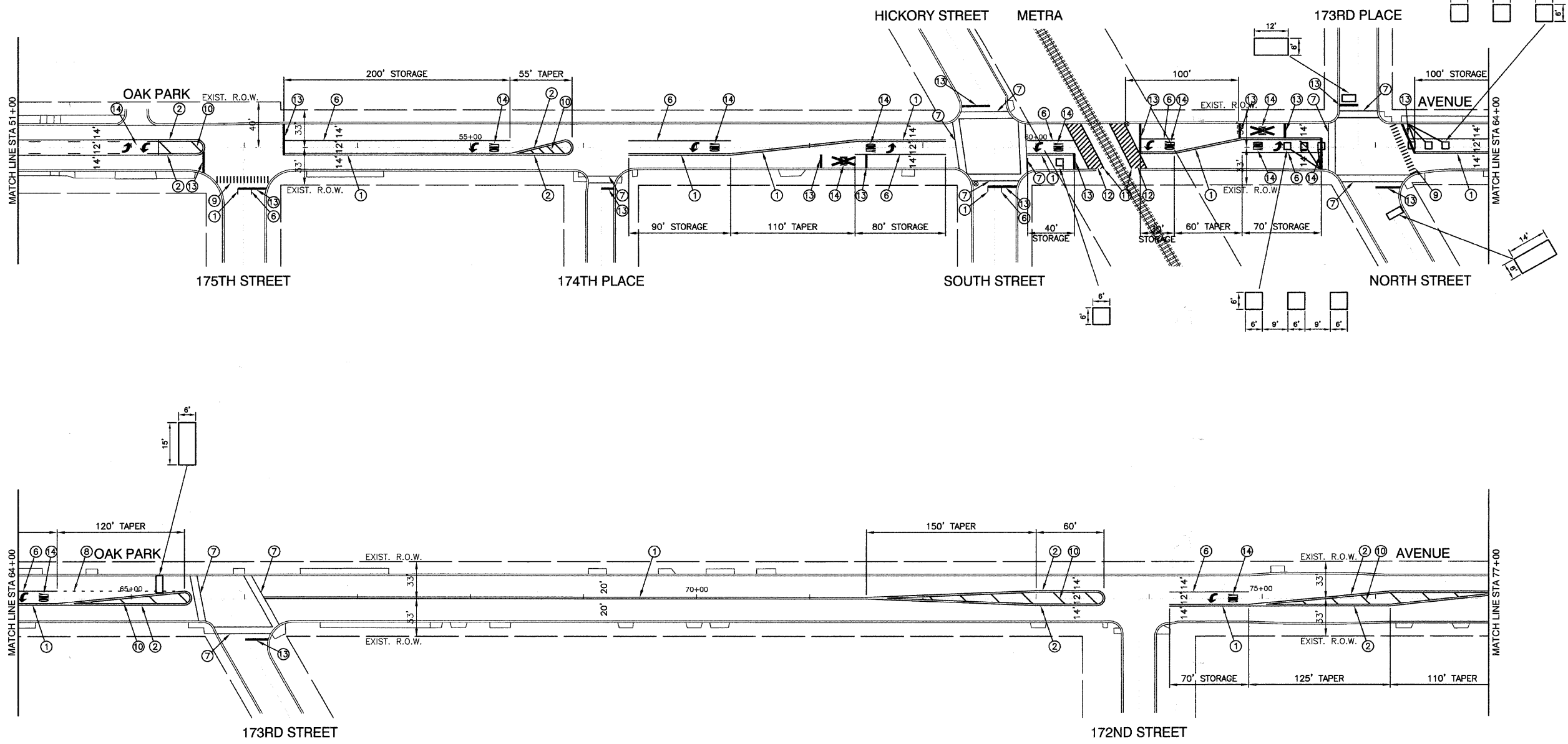
OAK PARK AVENUE STREET RESURFACING PAVEMENT MARKINGS

REVISIONS	
NAME	DATE

SCALE: VERT. NA
 HORIZ. 1"=50'
 DATE 07/30/08
 DRAWN BY EDG
 CHECKED BY WPD

F. A. U. RITE.	SECTION	COUNTY	TOTAL SHEETS	SHEET NO.
2774	08-00106-00-RS	COOK	019	012
STA.	TO STA.			
FED. ROAD DIST. NO.	ILLINOIS	FED. AID PROJECT		

CONTRACT #63079



PAVEMENT MARKING LEGEND

- | | |
|--|---|
| ① THERMOPLASTIC DOUBLE 4" YELLOW CENTERLINE (11" C/C) | ⑮ PREFORMED PLASTIC DOUBLE 4" YELLOW CENTERLINE (11" C/C) |
| ② THERMOPLASTIC DOUBLE 4" YELLOW MEDIAN LINE (11" C/C) | ⑯ PREFORMED PLASTIC DOUBLE 4" YELLOW MEDIAN LINE (11" C/C) |
| ③ THERMOPLASTIC 4" YELLOW LINE W/ 4" YELLOW DASH LINE (10' LINE-30' SPACE)(5 1/2" C/C) | ⑰ PREFORMED PLASTIC 4" WHITE DASH LINE (10' LINE-30' SPACE) |
| ④ THERMOPLASTIC 4" WHITE DASH LINE (10' LINE-30' SPACE) | ⑱ PREFORMED PLASTIC 4" YELLOW MEDIAN LINE |
| ⑤ THERMOPLASTIC 4" YELLOW MEDIAN LINE | ⑲ PREFORMED PLASTIC 4" WHITE EDGE LINE |
| ⑥ THERMOPLASTIC 6" WHITE LANE LINE | ⑳ PREFORMED PLASTIC 6" WHITE LANE LINE |
| ⑦ THERMOPLASTIC DOUBLE 6" WHITE CROSSWALK LINE (6' APART) | ㉑ PREFORMED PLASTIC 12" WHITE CROSSWALK LINE (2' APART) |
| ⑧ THERMOPLASTIC 6" WHITE DASH LINE (2' LINE-6' SPACE) | ㉒ PREFORMED PLASTIC 12" YELLOW DIAGONAL (20' C/C) |
| ⑨ THERMOPLASTIC 12" WHITE CROSSWALK LINE (2' APART) | ㉓ PREFORMED PLASTIC 24" WHITE STOP BAR |
| ⑩ THERMOPLASTIC 12" YELLOW DIAGONAL (20' C/C) | ㉔ PREFORMED PLASTIC LETTERS AND SYMBOLS |
| ⑪ THERMOPLASTIC 12" WHITE LINE | |
| ⑫ THERMOPLASTIC 12" WHITE DIAGONAL (2' APART) | |
| ⑬ THERMOPLASTIC 24" WHITE STOP BAR | |
| ⑭ THERMOPLASTIC LETTERS AND SYMBOLS | |

NOTE
PLEASE REFER TO IDOT DISTRICT 1 STANDARD TC-10 (SHEET #18) FOR PLACEMENT OF RAISED REFLECTIVE PAVEMENT MARKERS FROM STA 27+06 TO STA 78+66 AND FROM STA 83+10 TO STA 99+96

REVISIONS	
NAME	DATE

ILLINOIS DEPARTMENT OF TRANSPORTATION

**OAK PARK AVENUE
STREET RESURFACING
PAVEMENT MARKINGS**

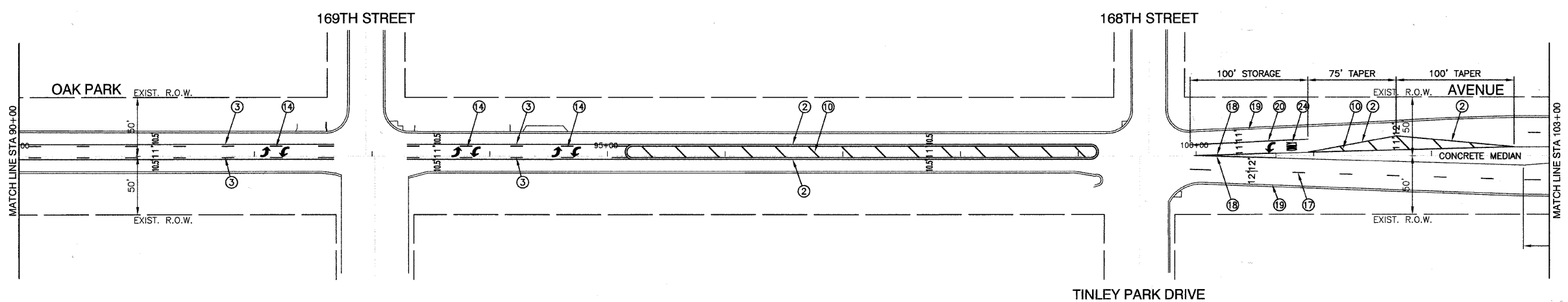
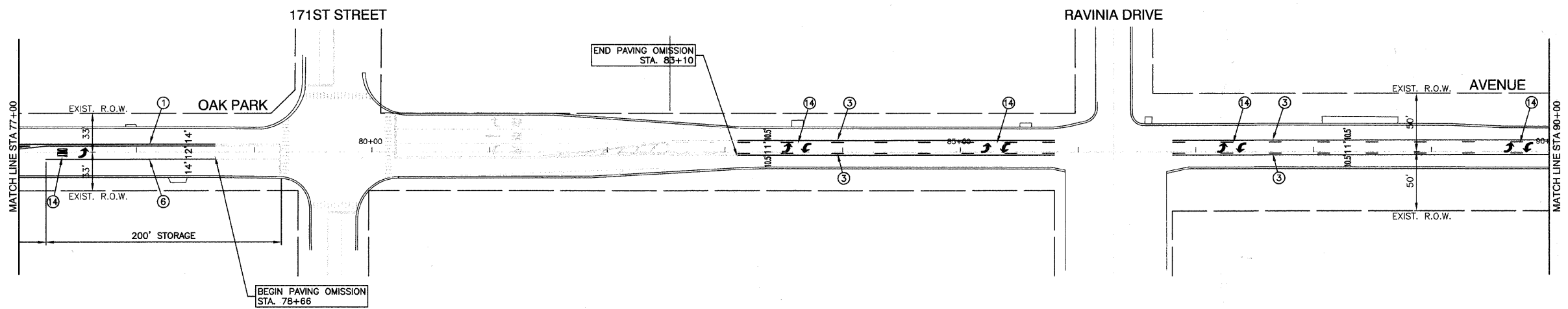
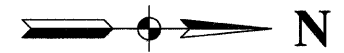
VERT. NA
SCALE: HORIZ. 1"=50'
DATE 07/30/08

DRAWN BY EDG
CHECKED BY WPD

ROBINSON ENGINEERING, LTD.
17000 SOUTH PARK AVENUE, SOUTH HOLLAND, ILLINOIS 60473
(708) 321-8700 FAX (708) 321-8828
ILLINOIS DESIGN FIRM REGISTRATION NO. 156401128 07504-PV/MK-01 - P03

F. A. U. RITE	SECTION	COUNTY	TOTAL SHEETS	SHEET NO.
2774	08-00106-00-RS	COOK	019	013
STA.		TO STA.		
FED. ROAD DIST. NO.	ILLINOIS	FED. AID PROJECT		

CONTRACT #63079



PAVEMENT MARKING LEGEND

- | | |
|--|---|
| ① THERMOPLASTIC DOUBLE 4" YELLOW CENTERLINE (11" C/C) | ⑮ PREFORMED PLASTIC DOUBLE 4" YELLOW CENTERLINE (11" C/C) |
| ② THERMOPLASTIC DOUBLE 4" YELLOW MEDIAN LINE (11" C/C) | ⑯ PREFORMED PLASTIC DOUBLE 4" YELLOW MEDIAN LINE (11" C/C) |
| ③ THERMOPLASTIC 4" YELLOW LINE W/ 4" YELLOW DASH LINE (10' LINE-30' SPACE)(5 1/2" C/C) | ⑰ PREFORMED PLASTIC 4" WHITE DASH LINE (10' LINE-30' SPACE) |
| ④ THERMOPLASTIC 4" WHITE DASH LINE (10' LINE-30' SPACE) | ⑱ PREFORMED PLASTIC 4" YELLOW MEDIAN LINE |
| ⑤ THERMOPLASTIC 4" YELLOW MEDIAN LINE | ⑲ PREFORMED PLASTIC 4" WHITE EDGE LINE |
| ⑥ THERMOPLASTIC 6" WHITE LANE LINE | ⑳ PREFORMED PLASTIC 6" WHITE LANE LINE |
| ⑦ THERMOPLASTIC DOUBLE 6" WHITE CROSSWALK LINE (6' APART) | ㉑ PREFORMED PLASTIC 12" WHITE CROSSWALK LINE (2' APART) |
| ⑧ THERMOPLASTIC 6" WHITE DASH LINE (2' LINE-6' SPACE) | ㉒ PREFORMED PLASTIC 12" YELLOW DIAGONAL (20' C/C) |
| ⑨ THERMOPLASTIC 12" WHITE CROSSWALK LINE (2' APART) | ㉓ PREFORMED PLASTIC 24" WHITE STOP BAR |
| ⑩ THERMOPLASTIC 12" YELLOW DIAGONAL (20' C/C) | ㉔ PREFORMED PLASTIC LETTERS AND SYMBOLS |
| ⑪ THERMOPLASTIC 12" WHITE LINE | |
| ⑫ THERMOPLASTIC 12" WHITE DIAGONAL (2' APART) | |
| ⑬ THERMOPLASTIC 24" WHITE STOP BAR | |
| ⑭ THERMOPLASTIC LETTERS AND SYMBOLS | |

NOTE
PLEASE REFER TO IDOT DISTRICT 1 STANDARD TC-10 (SHEET #18) FOR PLACEMENT OF RAISED REFLECTIVE PAVEMENT MARKERS FROM STA 27+06 TO STA 78+66 AND FROM STA 83+10 TO STA 99+96

REVISIONS	
NAME	DATE

ILLINOIS DEPARTMENT OF TRANSPORTATION

OAK PARK AVENUE STREET RESURFACING PAVEMENT MARKINGS

SCALE: VERT. NA
HORIZ 1"=50'

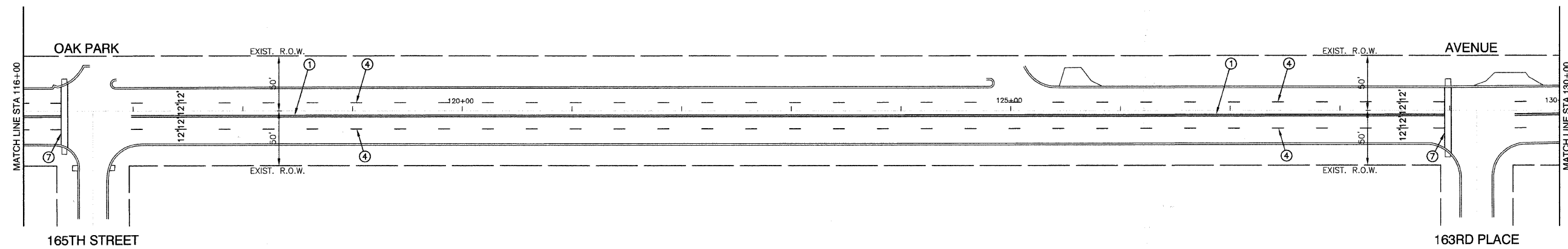
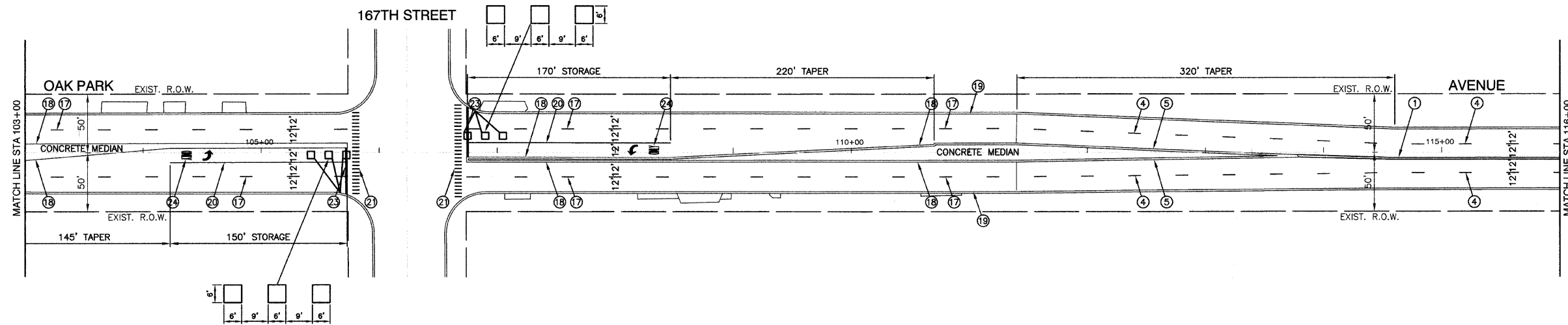
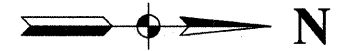
DATE 07/30/08

DRAWN BY EDG
CHECKED BY WPD

ROBINSON ENGINEERING, LTD.
17000 SOUTH PARK AVENUE SOUTH HOLLAND, ILLINOIS 60473
(708) 331-6700 FAX (708) 331-3808
ILLINOIS DESIGN FIRM REGISTRATION NO. 18400128 07504-PV/MK-01 - P04

F. A. U. RITE	SECTION	COUNTY	TOTAL SHEETS	SHEET NO.
2774	08-00106-00-RS	COOK	019	014
STA.		TO STA.		
FED. ROAD DIST. NO.	ILLINOIS	FED. AID PROJECT		

CONTRACT #63079



PAVEMENT MARKING LEGEND

- | | |
|--|---|
| ① THERMOPLASTIC DOUBLE 4" YELLOW CENTERLINE (11" C/C) | ⑮ PREFORMED PLASTIC DOUBLE 4" YELLOW CENTERLINE (11" C/C) |
| ② THERMOPLASTIC DOUBLE 4" YELLOW MEDIAN LINE (11" C/C) | ⑯ PREFORMED PLASTIC DOUBLE 4" YELLOW MEDIAN LINE (11" C/C) |
| ③ THERMOPLASTIC 4" YELLOW LINE W/ 4" YELLOW DASH LINE (10' LINE-30' SPACE)(5 1/2" C/C) | ⑰ PREFORMED PLASTIC 4" WHITE DASH LINE (10' LINE-30' SPACE) |
| ④ THERMOPLASTIC 4" WHITE DASH LINE (10' LINE-30' SPACE) | ⑱ PREFORMED PLASTIC 4" YELLOW MEDIAN LINE |
| ⑤ THERMOPLASTIC 4" YELLOW MEDIAN LINE | ⑲ PREFORMED PLASTIC 4" WHITE EDGE LINE |
| ⑥ THERMOPLASTIC 6" WHITE LANE LINE | ⑳ PREFORMED PLASTIC 6" WHITE LANE LINE |
| ⑦ THERMOPLASTIC DOUBLE 6" WHITE CROSSWALK LINE (6' APART) | ㉑ PREFORMED PLASTIC 12" WHITE CROSSWALK LINE (2' APART) |
| ⑧ THERMOPLASTIC 6" WHITE DASH LINE (2' LINE-6' SPACE) | ㉒ PREFORMED PLASTIC 12" YELLOW DIAGONAL (20' C/C) |
| ⑨ THERMOPLASTIC 12" WHITE CROSSWALK LINE (2' APART) | ㉓ PREFORMED PLASTIC 24" WHITE STOP BAR |
| ⑩ THERMOPLASTIC 12" YELLOW DIAGONAL (20' C/C) | ㉔ PREFORMED PLASTIC LETTERS AND SYMBOLS |
| ⑪ THERMOPLASTIC 12" WHITE LINE | |
| ⑫ THERMOPLASTIC 12" WHITE DIAGONAL (2' APART) | |
| ⑬ THERMOPLASTIC 24" WHITE STOP BAR | |
| ⑭ THERMOPLASTIC LETTERS AND SYMBOLS | |

NOTE

PLEASE REFER TO IDOT DISTRICT 1 STANDARD TC-10 (SHEET #18) FOR PLACEMENT OF RAISED REFLECTIVE PAVEMENT MARKERS FROM STA 27+06 TO STA 78+66 AND FROM STA 83+10 TO STA 99+96

ILLINOIS DEPARTMENT OF TRANSPORTATION

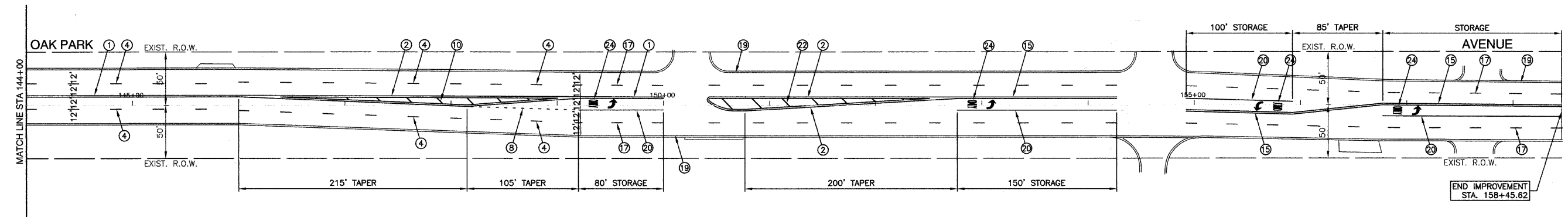
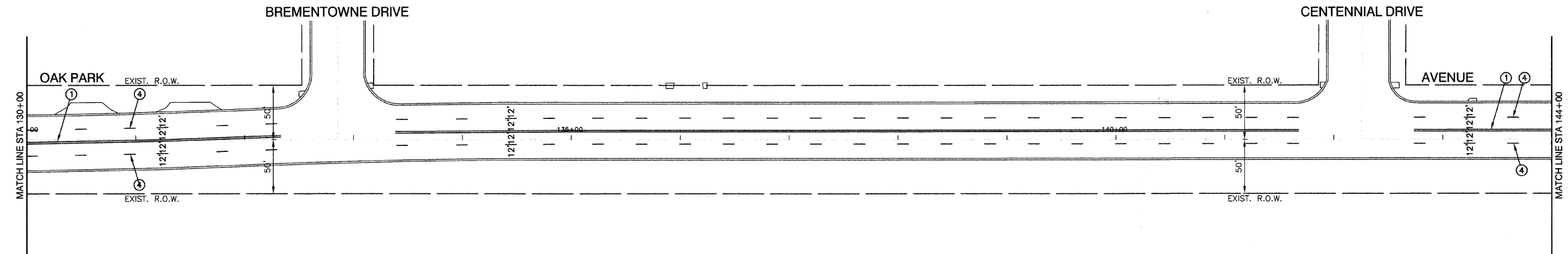
OAK PARK AVENUE STREET RESURFACING PAVEMENT MARKINGS

REVISIONS	
NAME	DATE

SCALE: VERT. NA
 HORIZ. 1"=50'
 DATE: 07/30/08
 DRAWN BY: EDG
 CHECKED BY: WPD

F. A. U. RITE	SECTION	COUNTY	TOTAL SHEETS	SHEET NO.
2774	08-00106-00-RS	COOK	019	015
STA.		TO STA.		
FED. ROAD DIST. NO.	ILLINOIS	FED. AID PROJECT		

CONTRACT #63079



PAVEMENT MARKING LEGEND

- | | |
|--|---|
| ① THERMOPLASTIC DOUBLE 4" YELLOW CENTERLINE (11" C/C) | ⑮ PREFORMED PLASTIC DOUBLE 4" YELLOW CENTERLINE (11" C/C) |
| ② THERMOPLASTIC DOUBLE 4" YELLOW MEDIAN LINE (11" C/C) | ⑯ PREFORMED PLASTIC DOUBLE 4" YELLOW MEDIAN LINE (11" C/C) |
| ③ THERMOPLASTIC 4" YELLOW LINE W/ 4" YELLOW DASH LINE (10' LINE-30' SPACE)(5 1/2" C/C) | ⑰ PREFORMED PLASTIC 4" WHITE DASH LINE (10' LINE-30' SPACE) |
| ④ THERMOPLASTIC 4" WHITE DASH LINE (10' LINE-30' SPACE) | ⑱ PREFORMED PLASTIC 4" YELLOW MEDIAN LINE |
| ⑤ THERMOPLASTIC 4" YELLOW MEDIAN LINE | ⑲ PREFORMED PLASTIC 4" WHITE EDGE LINE |
| ⑥ THERMOPLASTIC 6" WHITE LANE LINE | ⑳ PREFORMED PLASTIC 6" WHITE LANE LINE |
| ⑦ THERMOPLASTIC DOUBLE 6" WHITE CROSSWALK LINE (6' APART) | ㉑ PREFORMED PLASTIC 12" WHITE CROSSWALK LINE (2' APART) |
| ⑧ THERMOPLASTIC 6" WHITE DASH LINE (2' LINE-6' SPACE) | ㉒ PREFORMED PLASTIC 12" YELLOW DIAGONAL (20' C/C) |
| ⑨ THERMOPLASTIC 12" WHITE CROSSWALK LINE (2' APART) | ㉓ PREFORMED PLASTIC 24" WHITE STOP BAR |
| ⑩ THERMOPLASTIC 12" YELLOW DIAGONAL (20' C/C) | ㉔ PREFORMED PLASTIC LETTERS AND SYMBOLS |
| ⑪ THERMOPLASTIC 12" WHITE LINE | |
| ⑫ THERMOPLASTIC 12" WHITE DIAGONAL (2' APART) | |
| ⑬ THERMOPLASTIC 24" WHITE STOP BAR | |
| ⑭ THERMOPLASTIC LETTERS AND SYMBOLS | |

NOTE
PLEASE REFER TO IDOT DISTRICT 1 STANDARD TC-10 (SHEET #18) FOR PLACEMENT OF RAISED REFLECTIVE PAVEMENT MARKERS FROM STA 27+06 TO STA 78+66 AND FROM STA 83+10 TO STA 99+96

REVISIONS	
NAME	DATE

ILLINOIS DEPARTMENT OF TRANSPORTATION

**OAK PARK AVENUE
STREET RESURFACING
PAVEMENT MARKINGS**

SCALE: VERT. NA
HORIZ. 1"=50'

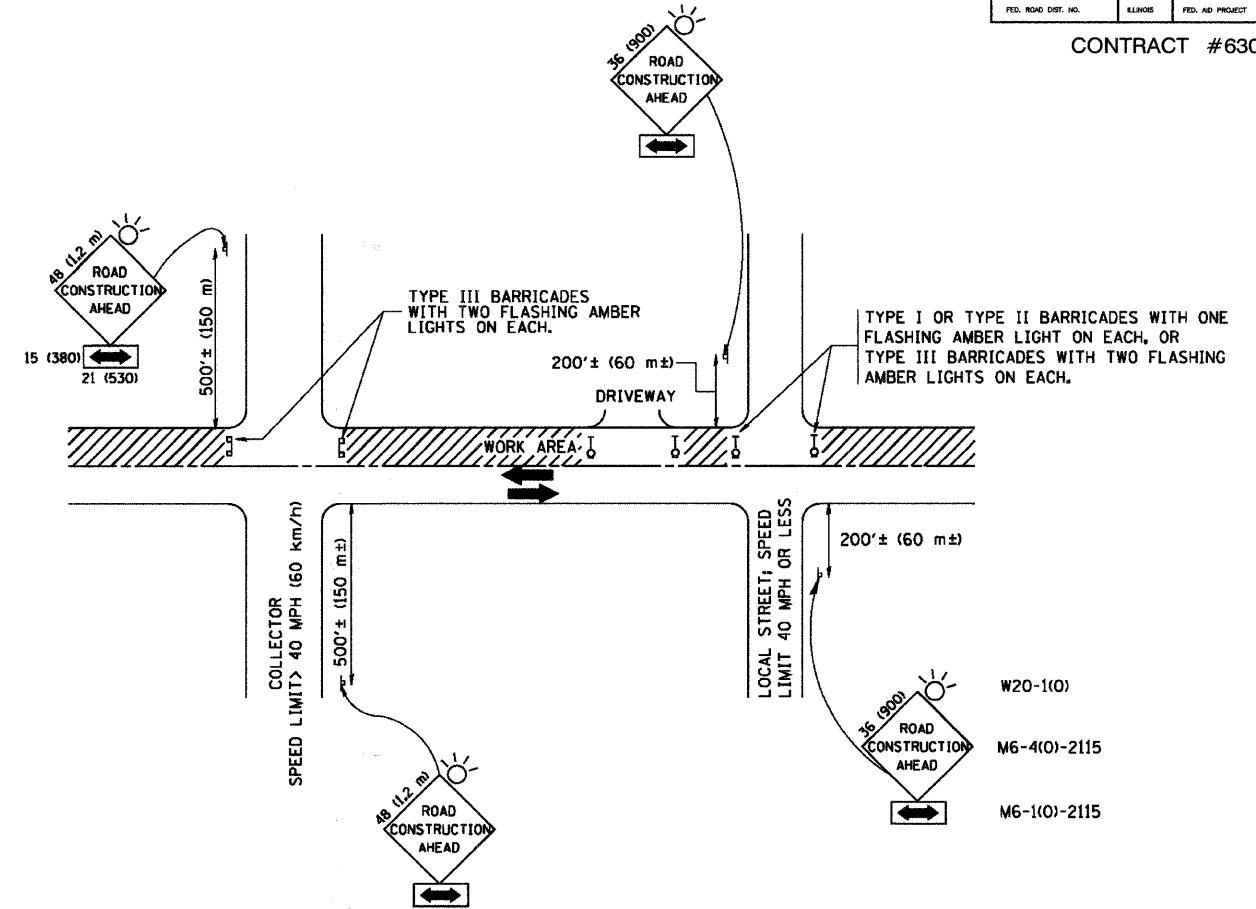
DATE: 07/30/08

DRAWN BY: EDG
CHECKED BY: WPD

ROBINSON ENGINEERING, LTD.
1700 SOUTH PARK AVENUE SOUTH HOLLAND, ILLINOIS 60473
(708) 381-6700 FAX (708) 381-9628
ILLINOIS DESIGN FIRM REGISTRATION NO. 19402108 07804-PVMK-01 - P06

F. A. U. RITE.	SECTION	COUNTY	TOTAL SHEETS	SHEET NO.
2774	08-00106-00-RS	COOK	019	016
STA.	TO STA.			
FED. ROAD DIST. NO.	ILLINOIS	FED. AID PROJECT		

CONTRACT #63079



TRAFFIC CONTROL AND PROTECTION FOR SIDE ROADS, INTERSECTIONS, AND DRIVEWAYS

NOTES:

- A. FOR NO LANE RESTRICTION ON THE SIDE ROAD OR DRIVEWAYS**
- SIDE ROAD WITH A SPEED LIMIT OF 40 MPH (60 km/h) OR LESS AS SHOWN ON THE DRAWING AND AS DIRECTED BY THE ENGINEER:
 - ONE ROAD CONSTRUCTION AHEAD SIGN 36 x 36 (900x900) WITH A FLASHER AND FLAG MOUNTED ON IT APPROXIMATELY 200' (60 m) IN ADVANCE OF THE MAIN ROUTE.
 - THE CLOSED PORTION OF THE MAIN ROUTE SHALL BE PROTECTED BY BLOCKING WITH TYPE I, TYPE II OR TYPE III BARRICADES, 1/3 OF THE CROSS SECTION OF THE CLOSED PORTION.
 - SIDE ROAD WITH A SPEED LIMIT GREATER THAN 40 MPH (60 km/h) AS SHOWN ON THE DRAWING AND AS DIRECTED BY THE ENGINEER:
 - ONE ROAD CONSTRUCTION AHEAD SIGN 48 x 48 (1.2 m x 1.2 m) WITH A FLASHER MOUNTED ON IT APPROXIMATELY 500' (150 m) IN ADVANCE OF THE MAIN ROUTE.
 - THE CLOSED PORTION OF THE MAIN ROUTE SHALL BE PROTECTED BY BLOCKING WITH TYPE III BARRICADES, 1/2 OF THE CROSS SECTION OF THE CLOSED PORTION.
 - WHEN THE SIDE ROAD LIES BETWEEN THE BEGINNING OF THE MAINLINE SIGNING AND THE WORK ZONE, A SINGLE HEADED ARROW (M6-1) SHALL BE USED IN LIEU OF THE DOUBLE HEADED ARROW (M6-4).
- B. FOR A LANE CLOSURE ON A SIDE ROAD OR DRIVEWAY:**
- USE APPLICABLE PORTIONS OF THE TYPICAL APPLICATION OF TRAFFIC CONTROL DEVICES (STD. 701501, STD. 701606 OR THE APPROPRIATE STANDARD). THE SPACING OF SIGNS AND BARRICADES SHALL BE ADJUSTED FOR FIELD CONDITIONS AS DIRECTED BY THE ENGINEER. THE DIRECTIONAL ARROW SHALL BE COVERED OR REMOVED WHEN NO LONGER CONSISTENT WITH THE SIDE ROAD LANE CLOSURE.
- C. ADVANCE WARNING SIGNS ARE TO BE OMITTED ON DRIVEWAY UNLESS OTHERWISE NOTED.**
- D. THE TRAFFIC CONTROL AND PROTECTION FOR SIDE ROADS, INTERSECTIONS, AND DRIVEWAYS SHALL BE INCIDENTAL TO THE COST OF SPECIFIED TRAFFIC CONTROL STANDARDS OR ITEMS.**

All dimensions are in millimeters (inches) unless otherwise shown.

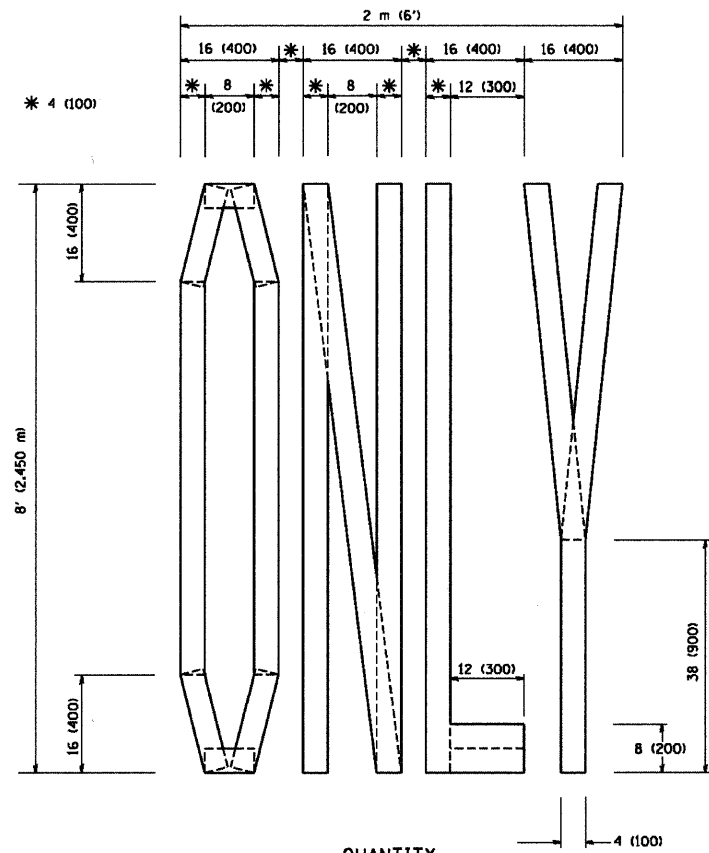
REVISIONS	
NAME	DATE
LHA	6/89
T. RAMMACHER	09/08/94
J. OBERLE	10/18/95
A. HOUSEH	03/06/96
A. HOUSEH	10/15/96
T. RAMMACHER	01/06/00

ILLINOIS DEPARTMENT OF TRANSPORTATION
 TRAFFIC CONTROL AND PROTECTION
 FOR
 SIDE ROADS, INTERSECTIONS, AND
 DRIVEWAYS

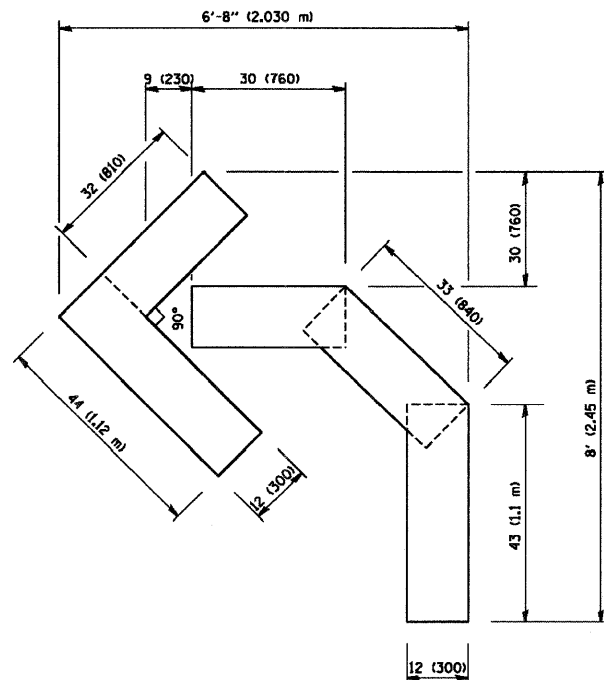
SCALE: NONE
 DRAWN BY
 CHECKED BY
 TC-10

F. A. U. RTE.	SECTION	COUNTY	TOTAL SHEETS	SHEET NO.
2774	08-00106-00-RS	COOK	019	017
STA.		TO STA.		
FED. ROAD DIST. NO.	ILLINOIS	FED. AID PROJECT		

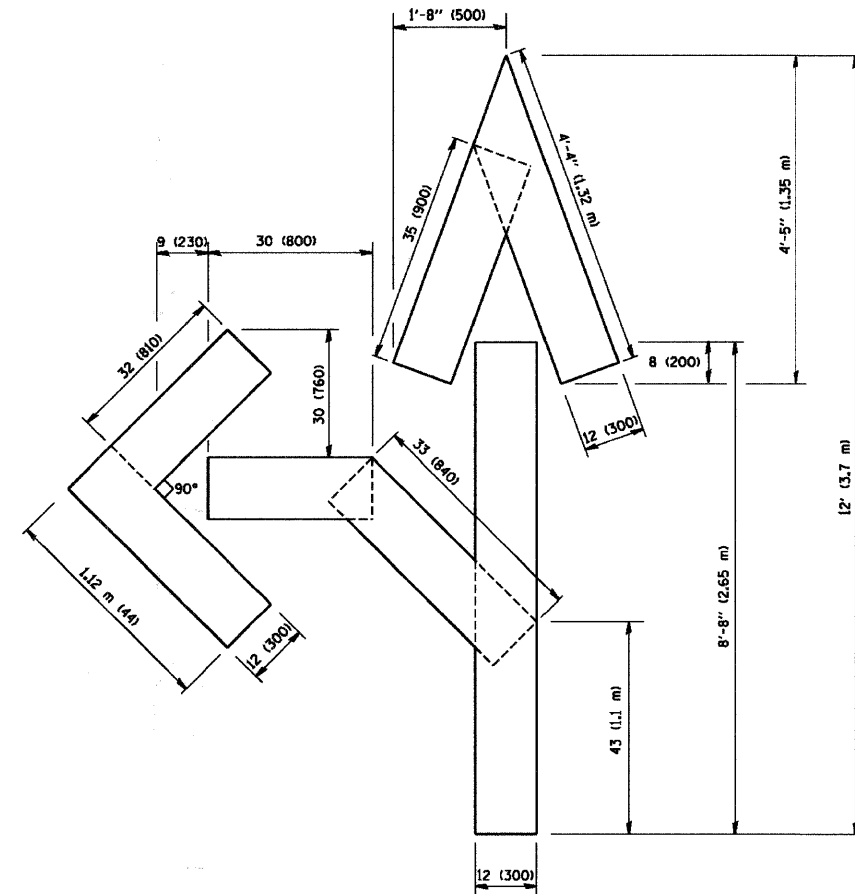
CONTRACT #63079



QUANTITY
4 (100) LINE = 64.1 ft. (19.7 m)
21.1 sq. ft. (1.97 sq. m)



QUANTITY
4 (100) LINE = 45.5 ft. (13.9 m)
15.2 sq. ft. (1.39 sq. m)



QUANTITY
4 (100) LINE = 82.5 ft. (25.3 m)
27.5 sq. ft. (2.53 sq. m)

All dimensions are in inches (millimeters) unless otherwise shown.

REVISIONS	
NAME	DATE
T. RAMMACHER	09/18/94
J. OBERLE	06/01/96
T. RAMMACHER	06/05/96
T. RAMMACHER	11/04/97
T. RAMMACHER	03/02/98
E. GOMEZ	08/28/00

ILLINOIS DEPARTMENT OF TRANSPORTATION

PAVEMENT MARKING
LETTERS AND SYMBOLS
FOR TRAFFIC STAGING

SCALE: NONE

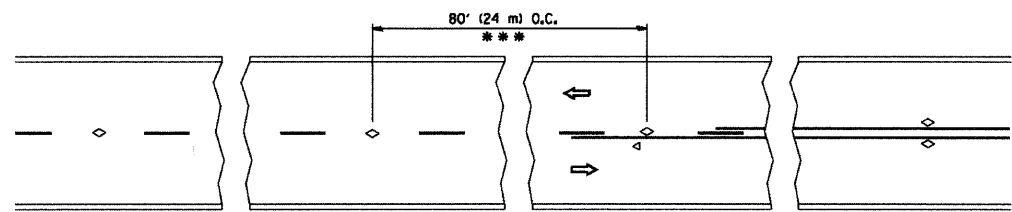
DRAWN BY CADD

CHECKED BY

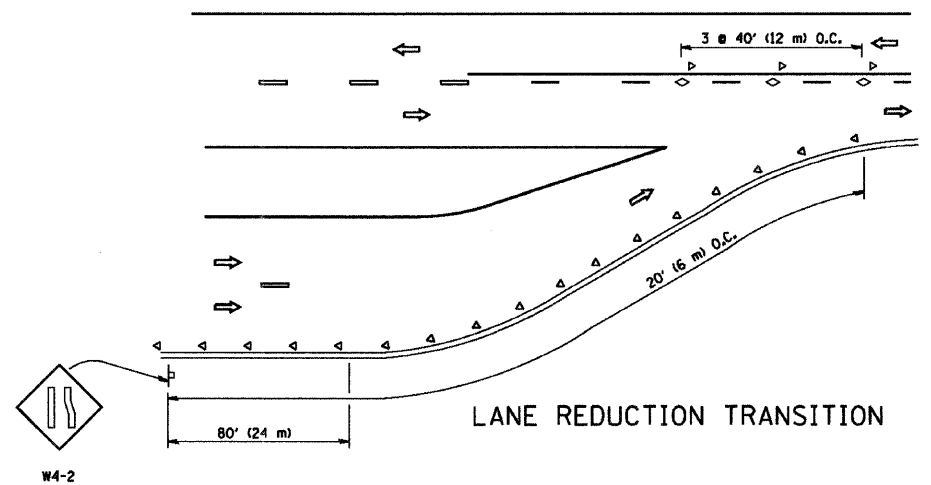
TC-16

P. A. II SITE	SECTION	COUNTY	TOTAL SHEETS	SHEET NO.
2774	08-00106-00-RS	COOK	019	018
STA.		TO STA.		
FED. ROAD DIST. NO.	ILLINOIS	FED. AID PROJECT		

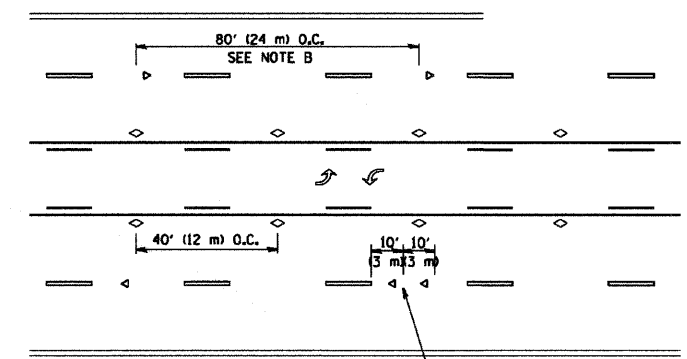
CONTRACT #63079



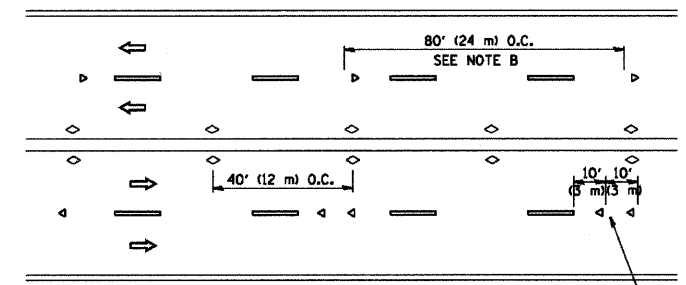
TWO-LANE/TWO-WAY



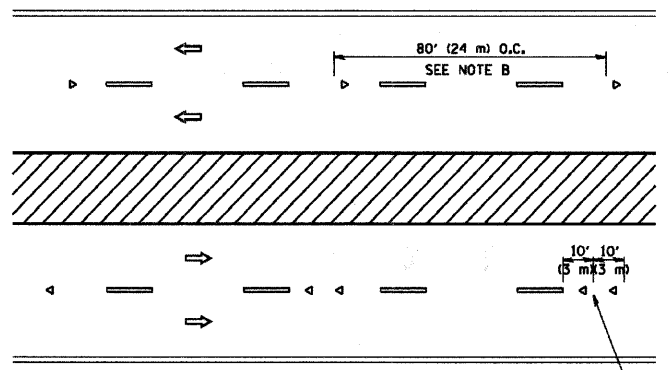
LANE REDUCTION TRANSITION



TWO-WAY LEFT TURN



MULTI-LANE/UNDIVIDED



MULTI-LANE/DIVIDED

GENERAL NOTES

1. MARKERS USED WITH DASHED LINES SHALL BE CENTERED IN THE GAP BETWEEN SEGMENTS.
2. MARKERS USED ADJACENT TO SOLID LINES SHALL BE OFFSET 2 TO 3 (50 TO 75) TOWARD TRAFFIC AS SHOWN.
3. MARKERS THROUGH TANGENTS LESS THAN 500' (150 m) IN LENGTH BETWEEN CURVES SHALL BE INSTALLED AT THE LESSER OF THE TWO CURVE SPACINGS.

SYMBOLS

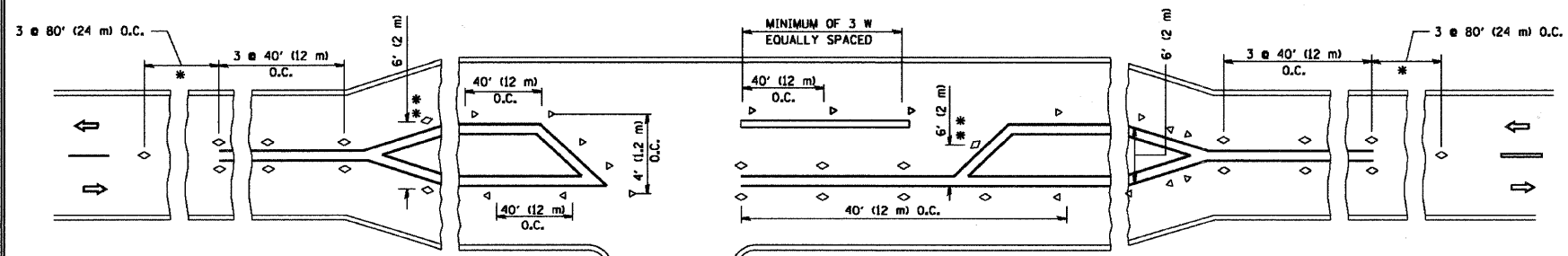
- YELLOW STRIPE
- WHITE STRIPE
- ◁ ONE-WAY AMBER MARKER
- ◁ ONE-WAY CRYSTAL MARKER (W/O)
- ◇ TWO-WAY AMBER MARKER

LANE MARKER NOTES

- B. REDUCE TO 40' (12 m) O.C. ON CURVES WHERE ADVISORY SPEEDS ARE 10 M.P.H (20 km/h) LOWER THAN POSTED SPEEDS.
- A. USE DOUBLE LANE LINE MARKERS SPACED AS SHOWN.

DESIGN NOTES

1. DOUBLE LANE LINE MARKERS SHALL BE USED UNLESS SPECIFIED OTHERWISE.
2. EXCEPT AS SHOWN ON THE LANE REDUCTION TRANSITION AND FREEWAY EXIT RAMP DETAIL, MARKERS ARE NOT TO BE SPECIFIED ON RIGHT EDGE LINES.
3. THE EXACT MARKER LIMITS, SPACING, AND COLOR SHOULD BE INCLUDED IN THE PLANS.
4. MARKERS SHOULD NOT BE USED ALONGSIDE CURBS EXCEPT FOR EXTREMELY SHORT SECTIONS OF CURBS WHERE NOT MORE THAN TWO MARKERS WOULD BE INVOLVED.



LEFT TURN

* SEE TWO-LANE/TWO-WAY WHERE MARKERS CONTINUE
 ** WHERE THE MEDIAN WIDTH IS 6' (2 m) OR LESS USE TWO-WAY MARKERS.

All dimensions are in Inches (millimeters) unless otherwise shown.

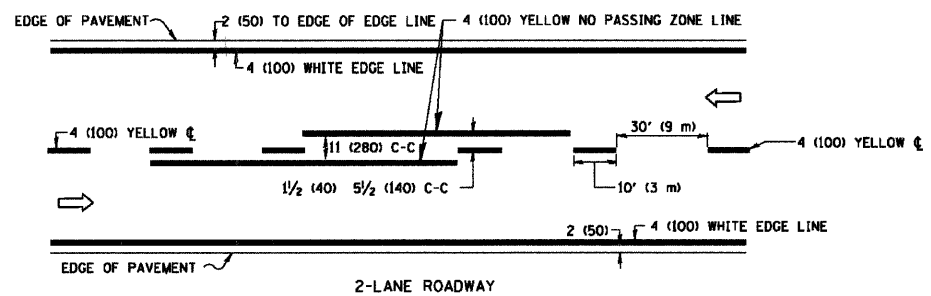
REVISIONS	
NAME	DATE
T. RAMMACHER	09-19-94
T. RAMMACHER	03-12-99
T. RAMMACHER	01-06-00

ILLINOIS DEPARTMENT OF TRANSPORTATION
 TYPICAL APPLICATIONS
 RAISED REFLECTIVE PAVEMENT
 MARKERS (SNOW-PLOW RESISTANT)

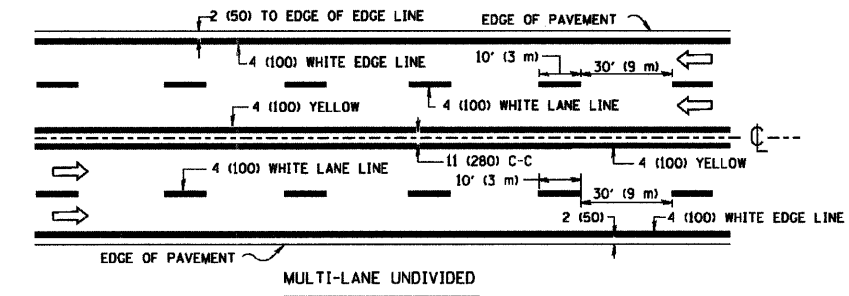
SCALE: NONE

DRAWN BY CADD
 CHECKED BY

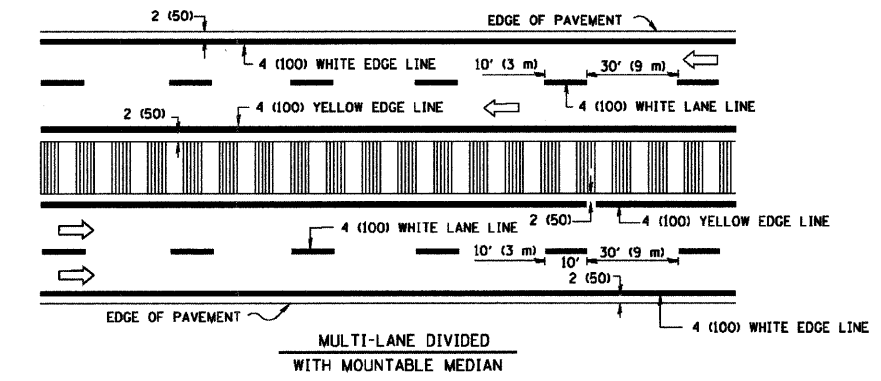
CONTRACT #63079



2-LANE ROADWAY



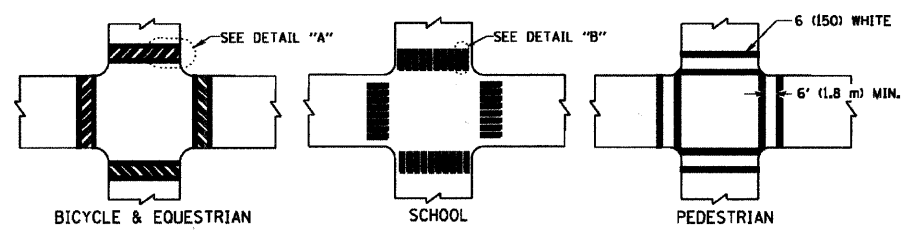
MULTI-LANE UNDIVIDED



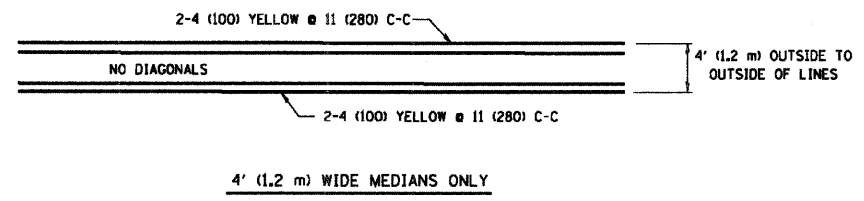
MULTI-LANE DIVIDED WITH MOUNTABLE MEDIUM

NOTE: MEDIANS WITH BARRIER CURB DO NOT REQUIRE AN EDGE LINE

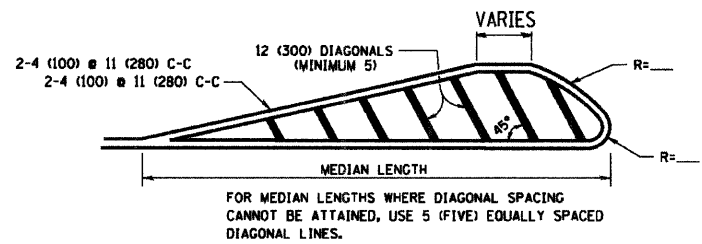
TYPICAL LANE AND EDGE LINE MARKING



TYPICAL CROSSWALK MARKING



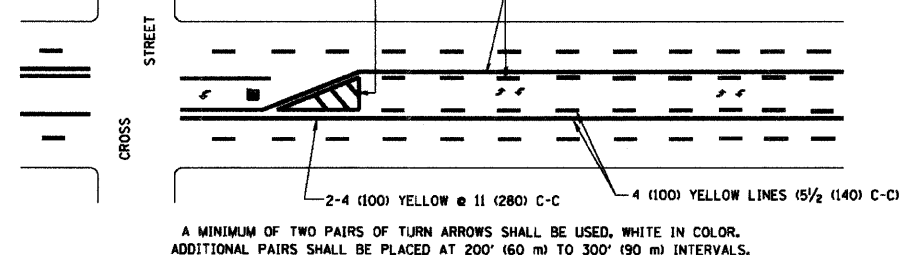
4' (1.2 m) WIDE MEDIANS ONLY



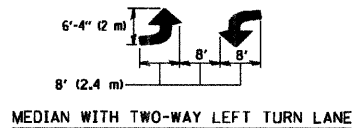
FOR MEDIAN LENGTHS WHERE DIAGONAL SPACING CANNOT BE ATTAINED, USE 5 (FIVE) EQUALLY SPACED DIAGONAL LINES.

DIAGONAL LINE SPACING: 50' (15 m) C-C (LESS THAN 30MPH (50 km/h))
75' (25 m) C-C 30MPH (50 km/h) TO 45MPH (70 km/h)
150' (45 m) C-C (MORE THAN 45MPH (70 km/h))

MEDIANS OVER 4' (1.2 m) WIDE

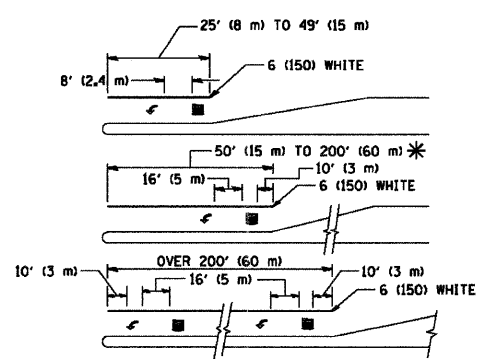


A MINIMUM OF TWO PAIRS OF TURN ARROWS SHALL BE USED, WHITE IN COLOR. ADDITIONAL PAIRS SHALL BE PLACED AT 200' (60 m) TO 300' (90 m) INTERVALS.



MEDIAN WITH TWO-WAY LEFT TURN LANE

TYPICAL PAINTED MEDIAN MARKING

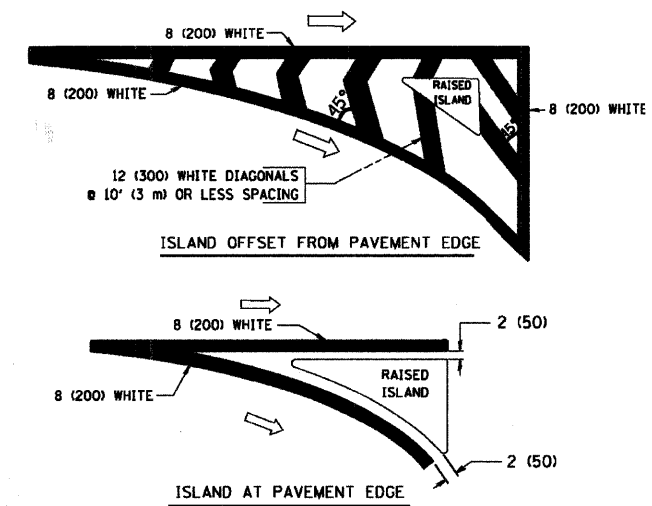


FULL SIZE LETTERS 8' (2.4 m) AND ARROWS SHALL BE USED. AREA = 15.6 SQ. FT. (1.5 m²) AREA = 20.8 SQ. FT. (1.9 m²)

* TURN LANES IN EXCESS OF 400' (120 m) IN LENGTH MAY HAVE AN ADDITIONAL SET OF ARROW - "ONLY" INSTALLED MIDWAY BETWEEN THE OTHER TWO SETS OF ARROW - "ONLY".

TYPICAL LEFT (OR RIGHT) TURN LANE

TYPICAL TURN LANE MARKING



TYPICAL ISLAND MARKING

TYPE OF MARKING	WIDTH OF LINE	PATTERN	COLOR	SPACING / REMARKS
CENTERLINE ON 2 LANE PAVEMENT	4 (100)	SKIP-DASH	YELLOW	10' (3 m) LINE WITH 30' (9 m) SPACE
CENTERLINE ON MULTI-LANE UNDIVIDED PAVEMENT	2 @ 4 (100)	SOLID	YELLOW	11 (280) C-C
NO PASSING ZONE LINES: FOR ONE DIRECTION	4 (100)	SOLID	YELLOW	5/2 (140) C-C FROM SKIP-DASH CENTERLINE
NO PASSING ZONE LINES: FOR BOTH DIRECTIONS	2 @ 4 (100)	SOLID	YELLOW	11 (280) C-C OMIT SKIP-DASH CENTERLINE BETWEEN
LANE LINES	4 (100)	SKIP-DASH	WHITE	10' (3 m) LINE WITH 30' (9 m) SPACE
LANE LINES	5 (125) ON FREEWAYS	SKIP-DASH	WHITE	
DOTTED LINES (EXTENSIONS OF CENTER, LANE OR TURN LANE MARKINGS)	SAME AS LINE BEING EXTENDED	SKIP-DASH	SAME AS LINE BEING EXTENDED	2' (600) LINE WITH 6' (1.8 m) SPACE
EDGE LINES	4 (100)	SOLID	YELLOW-LEFT WHITE-RIGHT	OUTLINE MOUNTABLE MEDIANS IN YELLOW; EDGE LINES ARE NOT USED NEXT TO BARRIER CURB
TURN LANE MARKINGS	6 (150) LINE; FULL SIZE LETTERS & SYMBOLS 18" (2.4m)	SOLID	WHITE	SEE TYPICAL TURN LANE MARKING DETAIL
TWO WAY LEFT TURN MARKING	2 @ 4 (100) EACH DIRECTION	SKIP-DASH AND SOLID	YELLOW	10' (3 m) LINE WITH 30' (9 m) SPACE FOR SKIP-DASH; 5/2 (140) C-C BETWEEN SOLID LINE AND SKIP-DASH LINE
TWO WAY LEFT TURN MARKING	8' (2.4m) LEFT ARROW	IN PAIRS	WHITE	SEE TYPICAL TWO-WAY LEFT TURN MARKING DETAIL
CROSSWALK LINES (PEDESTRIAN A. DIAGONALS (BIKE & EQUESTRIAN) B. LONGITUDINAL BARS (SCHOOL))	2 @ 6 (150) 12 (300) @ 45° 12 (300) @ 90°	SOLID SOLID SOLID	WHITE WHITE WHITE	NOT LESS THAN 6' (1.8 m) APART 2' (600) APART SEE TYPICAL CROSSWALK MARKING DETAILS.
STOP LINES	24 (600)	SOLID	WHITE	PLACE 4' (1.2 m) IN ADVANCE OF AND PARALLEL TO CROSSWALK, IF PRESENT. OTHERWISE, PLACE AT DESIRED STOPPING POINT, PARALLEL TO CROSSROAD CENTERLINE, WHERE POSSIBLE
PAINTED MEDIANS	2 @ 4 (100) WITH 12 (300) DIAGONALS @ 45° NO DIAGONALS USED FOR 4' (1.2 m) WIDE MEDIANS	SOLID	YELLOW; TWO WAY TRAFFIC WHITE; ONE WAY TRAFFIC	11 (280) C-C FOR THE DOUBLE LINE SEE TYPICAL PAINTED MEDIAN MARKING.
GORE MARKING AND CHANNELIZING LINES	8 (200) WITH 12 (300) DIAGONALS @ 45°	SOLID	WHITE	DIAGONALS: 15' (4.5 m) C-C (LESS THAN 30MPH (50 km/h)) 20' (6 m) C-C 30MPH (50 km/h) TO 45MPH (70 km/h) 30' (9 m) C-C (OVER 45MPH (70 km/h))
RAILROAD CROSSING	24 (600) TRANSVERSE LINES; "RR" IS 6' (1.8 m) AREA OF: "R"=3.6 SQ. FT. (0.33 m ²) EACH "X"=54.0 SQ. FT. (5.0 m ²)	SOLID	WHITE	SEE STATE STANDARD 780001
SHOULDER DIAGONALS	12 (300) @ 45°	SOLID	WHITE - RIGHT YELLOW - LEFT	50' (15 m) C-C (LESS THAN 30MPH (50 km/h)) 75' (25 m) C-C (30 MPH (50 km/h) TO 45MPH (70 km/h)) 150' (45 m) C-C (OVER 45MPH (70 km/h))

FOR FURTHER DETAILS ON PAVEMENT MARKING REFER TO STANDARD SPECIFICATIONS FOR ROAD AND BRIDGE CONSTRUCTION AND STATE STANDARD 780001.

All dimensions are in inches (millimeters) unless otherwise shown.

REVISIONS	
NAME	DATE
EVERS	03-19-90
T. RAMMACHER	10-27-94
ALEX HOUSEH	10-09-96
ALEX HOUSEH	10-17-96
T. RAMMACHER	01-06-00

ILLINOIS DEPARTMENT OF TRANSPORTATION
DISTRICT ONE
TYPICAL PAVEMENT MARKINGS

SCALE: NONE

DRAWN BY CADD
CHECKED BY