

Chain ARGOFAYRD contains:
20 CUR 200 22

Beginning chain ARGOFAYRD description
=====

Point 20 N 1,933,156.11 E 2,330,616.58 Sta 197+23.77

COURSE FROM 20 TO PC 200 32° 53' 21.66" DIST 3,817.43'

Curve Data

Curve 200

P.I. Station 238+51.42 N 1,936,622.19 E 2,332,857.98

DELTA = 4° 37' 54.13" (LT)

DEGREE = 0° 44' 48.92"

Tangent = 310.22'

Length = 620.11'

Radius = 7,670.93'

External = 6.27'

Long Chord = 619.94'

Mid. Ord. = 6.27'

P.C. Station 235+41.20 N 1,936,361.69 E 2,332,689.52

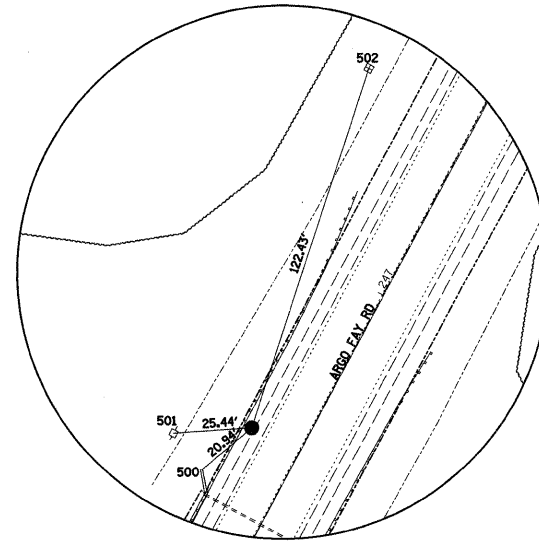
P.T. Station 241+61.30 N 1,936,895.44 E 2,333,004.85

C.C. N 1,940,527.14 E 2,326,248.08

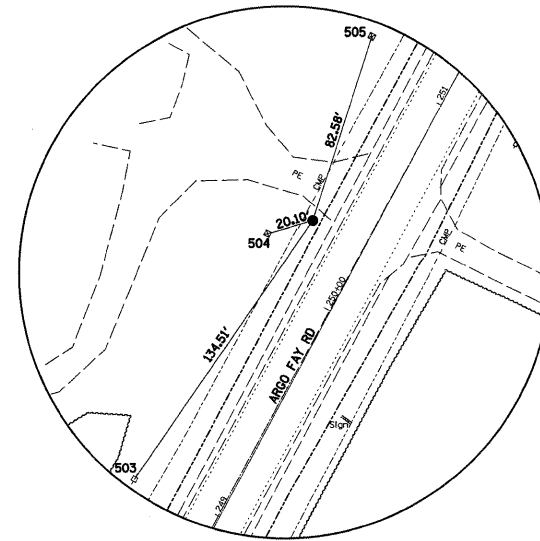
COURSE FROM PT 200 TO 22 28° 15' 27.54" DIST 2,094.15'

Point 22 N 1,938,740.02 E 2,333,996.29 Sta 262+55.45

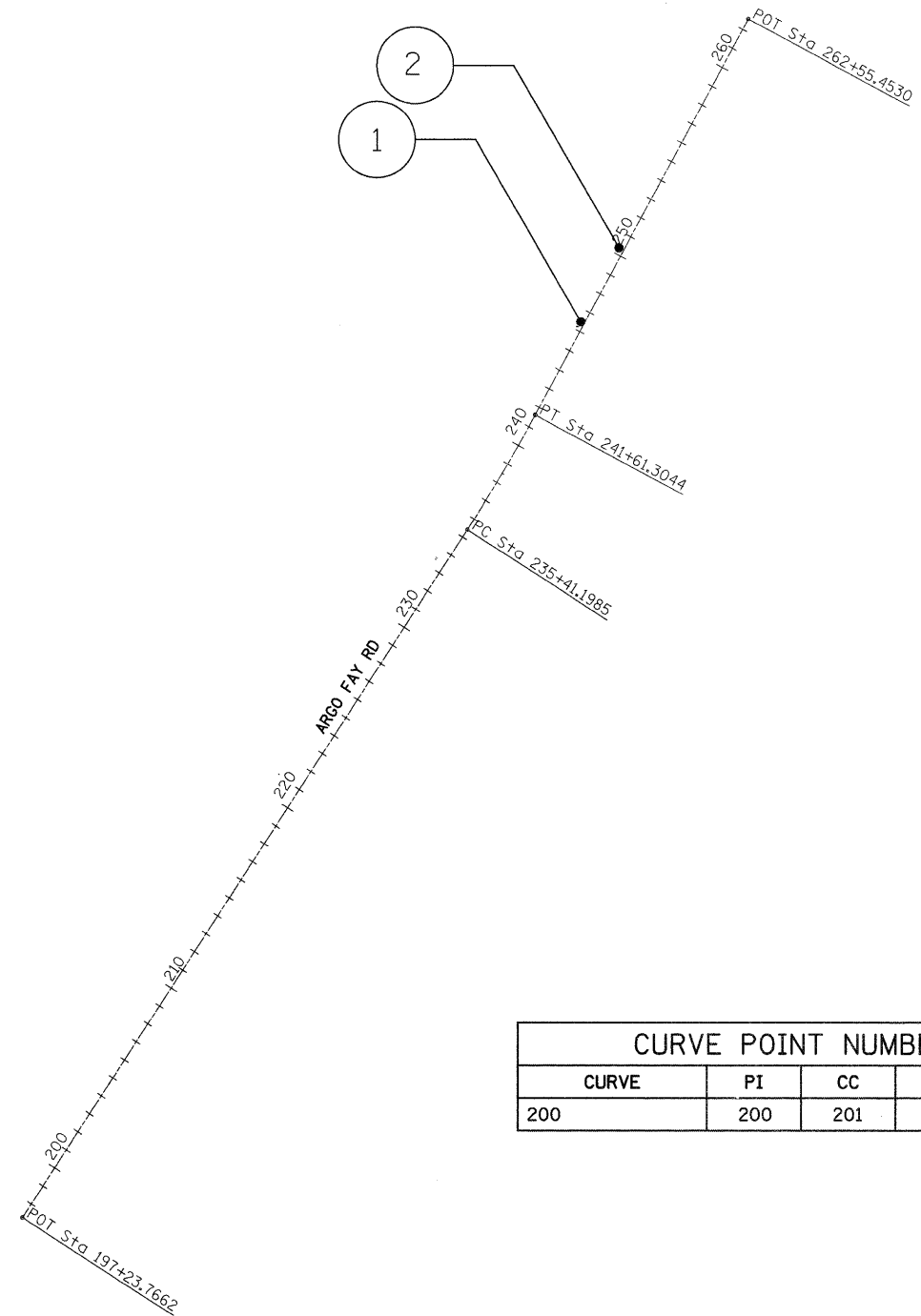
Ending chain ARGOFAYRD description
=====



HORIZONTAL CONTROL POINT NO. 1



HORIZONTAL CONTROL POINT NO. 2



HORIZONTAL CONTROL POINTS

POINT	NORTH	EAST	ELEVATION	CHAIN	STATION	OFFSET	DESCRIPTION
1	1937327.3379	2333217.1092	646.2357	ARGOFAYRD	246+42.2251	17.5093' LT	HORIZONTAL CONTROL STATION
2	1937672.8860	2333394.3790	645.9178	ARGOFAYRD	250+30.5195	24.9606' LT	HORIZONTAL CONTROL STATION

SURVEY WORK POINTS

POINT	NORTH	EAST	ELEVATION	CHAIN	STATION	OFFSET	DESCRIPTION
100	1937594.5811	2332965.8752	640.4999	ARGOFAYRD	247+58.6767	365.3260' LT	NAIL
101	1937171.8680	2332841.2724	640.4547	ARGOFAYRD	243+27.3478	274.9515' LT	NAIL
102	1936805.9560	2333627.1635	653.0401	ARGOFAYRD	243+77.1126	590.5194' RT	NAIL
103	1937463.0323	2333860.8377	654.2886	ARGOFAYRD	250+66.5135	485.2617' RT	NAIL
104	1936858.1672	2334074.0255	650.2212	ARGOFAYRD	246+34.6627	959.4090' RT	NAIL

BENCH MARKS

POINT	NORTH	EAST	ELEVATION	CHAIN	STATION	OFFSET	DESCRIPTION
401	1937305.9114	2333201.8293	646.3581	ARGOFAYRD	246+16.1180	20.8242' LT	VERTICAL CONTROL STATION

REFERENCE TIES

POINT	CHAIN	STATION	OFFSET	DESCRIPTION
500	ARGOFAYRD	246+22.7280	25.1515' LT	CORNER OF WINGWALL
501	ARGOFAYRD	246+28.6390	39.0208' LT	POWER POLE
502	ARGOFAYRD	247+62.7252	39.1549' LT	TELEPHONE SPLICE BOX
503	ARGOFAYRD	248+96.8223	39.7509' LT	POWER POLE
504	ARGOFAYRD	250+16.4692	39.3314' LT	RIGHT OF WAY MARKER
505	ARGOFAYRD	251+11.7220	39.9780' LT	RIGHT OF WAY MARKER

CURVE POINT NUMBERS				
CURVE	PI	CC	PC	PT
200	200	201	202	203

FILE NAME = c:\projects\p282684\d82684hvc.dgn

USER NAME = grantpm
PLOT SCALE = 105.0000' / IN.
PLOT DATE = Fri Aug 01 13:25:08 2008

DESIGNED -
DRAWN -
CHECKED -
DATE -

REVISED -
REVISED -
REVISED -
REVISED -

STATE OF ILLINOIS
DEPARTMENT OF TRANSPORTATION

HORIZONTAL & VERTICAL CONTROL

SCALE: SHEET NO. OF SHEETS STA. TO STA.

F.A.S. RTE. 2076	SECTION 101T-1	COUNTY CARROLL	TOTAL SHEETS 31	SHEET NO. 11
FED. ROAD DIST. NO. ILLINOIS FED. AID PROJECT				
CONTRACT NO. 64979				