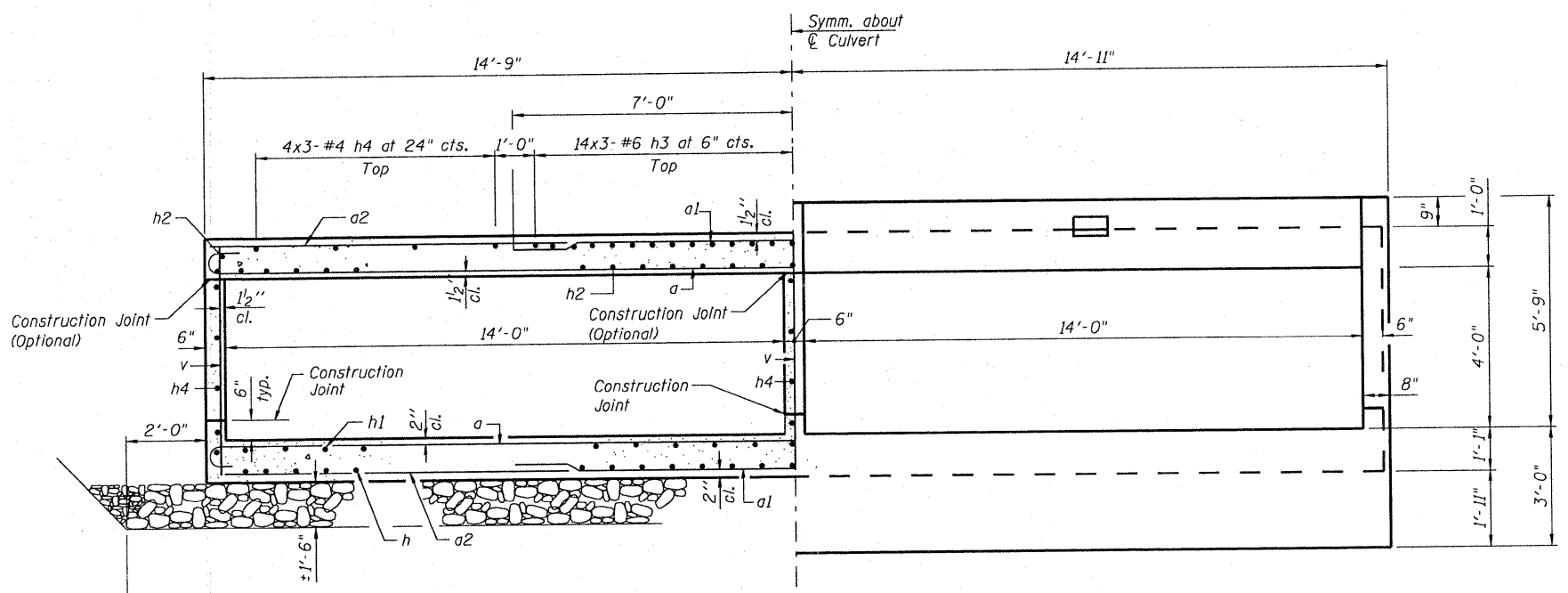


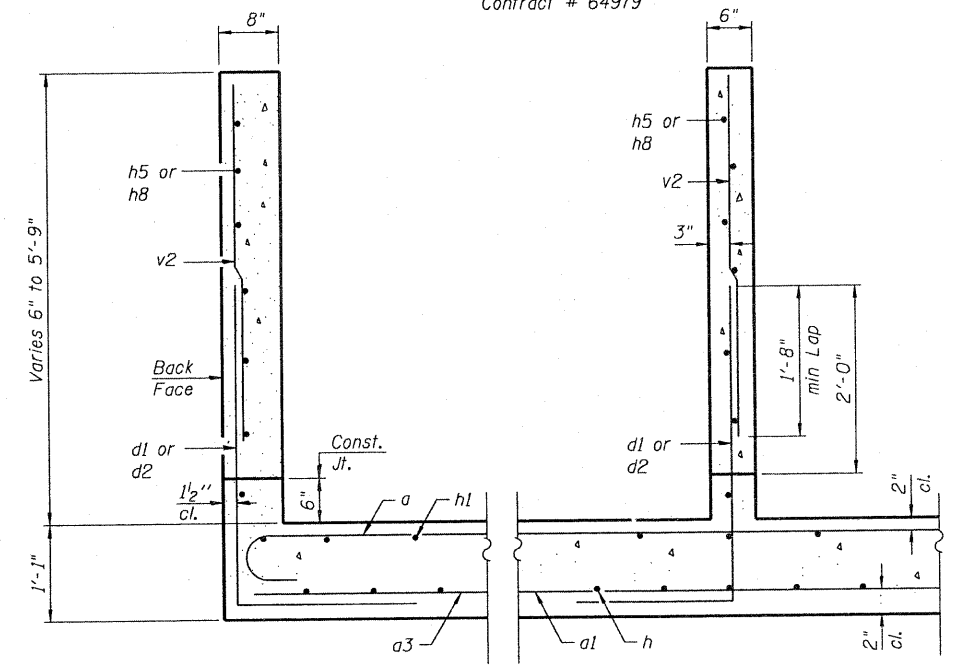
STATE OF ILLINOIS
DEPARTMENT OF TRANSPORTATION

ROUTE NO.	SECTION	COUNTY	STATION	SHEET NO.	SHEET NO. S-3
Argo Fay Road	101T-1	Carroll	31	17	S-6 SHEETS
FED. ROAD DIST. NO. 7	ILLINOIS	FED. AID PROJECT			

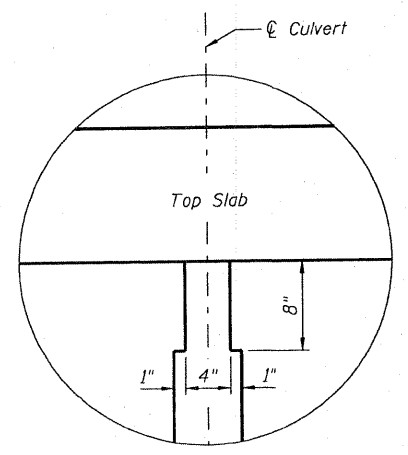
Contract # 64979



HALF SECTION THRU BARREL

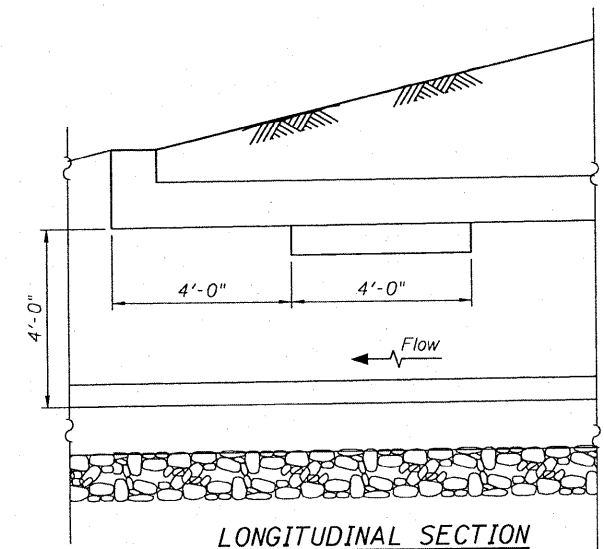


SECTION A-A



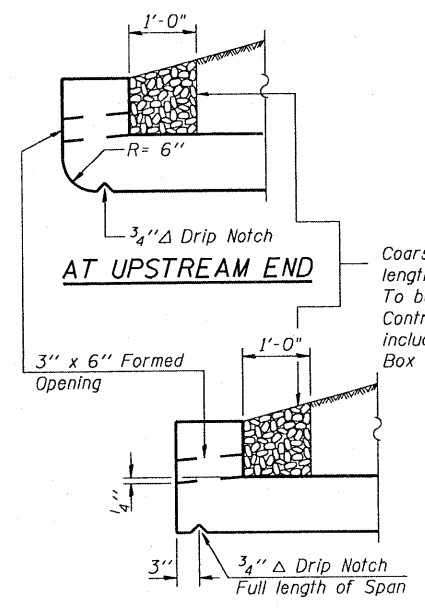
PHOEBE NESTING SITE NOTCH DETAIL
Downstream end only

Note:
Notch formed by rough-finished board attached to and removed with formwork.



LONGITUDINAL SECTION

HALF END ELEVATION



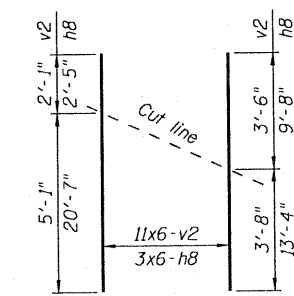
AT UPSTREAM END

AT DOWNSTREAM END DRAIN DETAIL

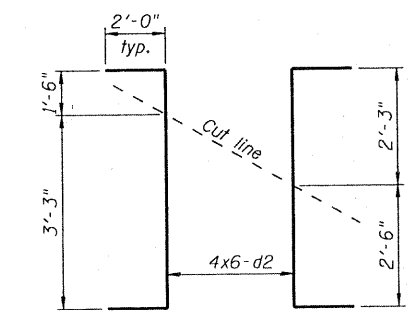
Coarse aggregate full length of both headwalls. To be placed by Grading Contractor. Cost included with Concrete Box Culverts.

SPLICE LENGTHS

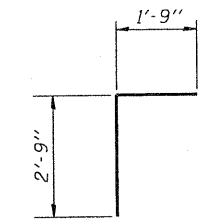
Size	Barrel	Wingwall
#4	1'-4"	1'-8"
#5	1'-8"	2'-2"
#6	2'-0"	2'-7"
#7	2'-9"	3'-5"



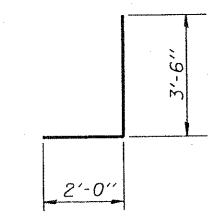
BAR v2, h8 CUTTING DIAGRAM



BAR d2 CUTTING DIAGRAM



BAR d



BAR d1

NOTES:

1. Bars indicated thus 12x4-#5 etc. indicates 12 lines of bars with 4 lengths per line.
2. Work this sheet with sheet S-2.

CULVERT DETAILS
ARGO FAY ROAD OVER
JOHNSON CREEK TRIBUTARY
FAS 2076 (ARGO FAY ROAD)
SECTION 101T-1
CARROLL COUNTY
STA. 246+04.68
S.N. 008-2020

DESIGNED	E. Mroczek
CHECKED	B. Sauter
DRAWN	R. Danley
CHECKED	E. Mroczek

CG Ciorba Group, Inc.
CONSULTING ENGINEERS
5507 North Cumberland Avenue, Suite 402 Chicago, Illinois 60656
Tel. 773.775.4009 Fax 773.775.4014 Email chicago@ciorba.com

8/1/2008 m:\pro\13317\3317_07\design\structural\cadd\3317-07-08.dgn