

WILLIAM A. SNYDER &
JOYCE SNYDER

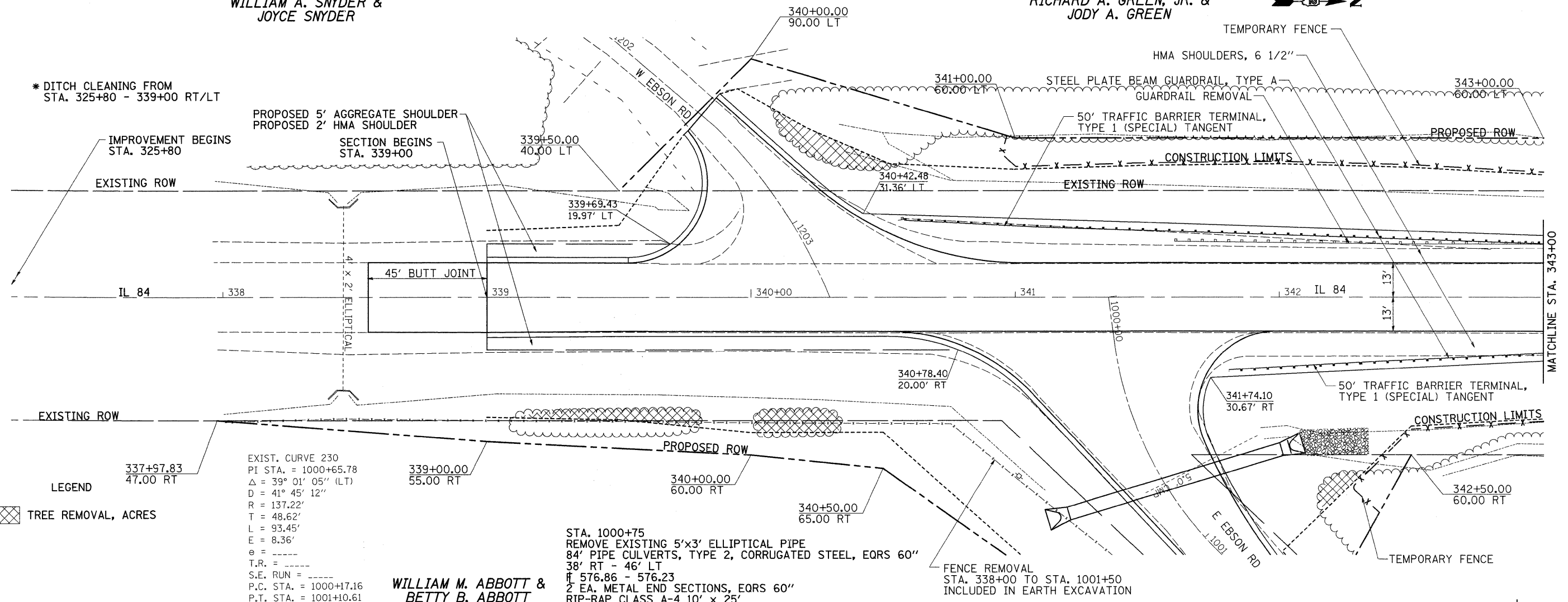
RICHARD A. GREEN, JR. &
JODY A. GREEN



* DITCH CLEANING FROM
STA. 325+80 - 339+00 RT/LT

PROPOSED 5' AGGREGATE SHOULDER
PROPOSED 2' HMA SHOULDER
SECTION BEGINS
STA. 339+00

IMPROVEMENT BEGINS
STA. 325+80

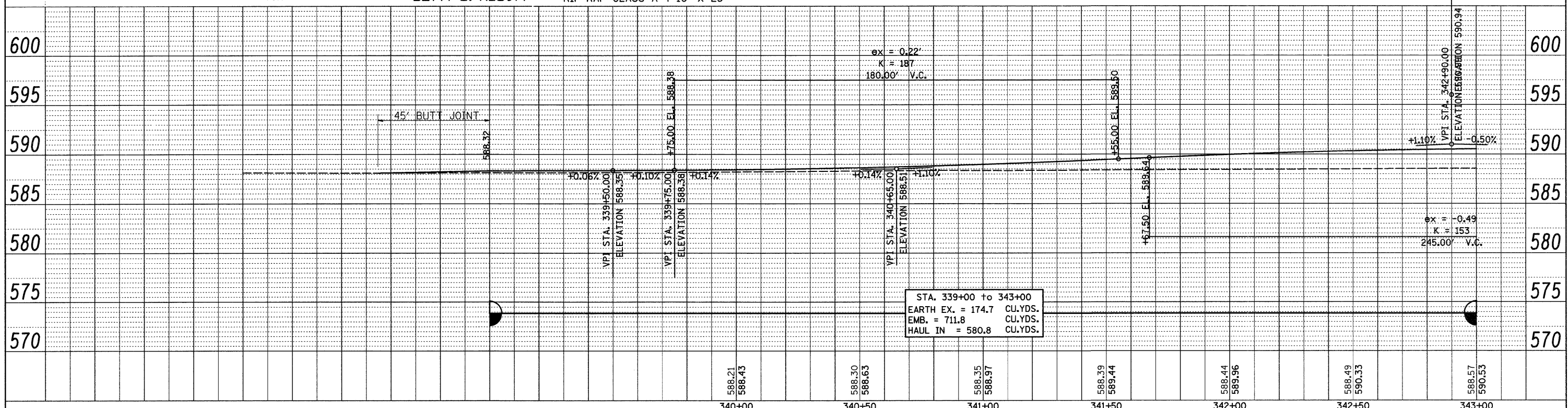


EXIST. CURVE 230
PI STA. = 1000+65.78
 $\Delta = 39^\circ 01' 05''$ (LT)
 $D = 41^\circ 45' 12''$
 $R = 137.22'$
 $T = 48.62'$
 $L = 93.45'$
 $E = 8.36'$
 $e = \text{---}$
T.R. = ---
S.E. RUN = ---
P.C. STA. = 1000+17.16
P.T. STA. = 1001+10.61

STA. 1000+75
REMOVE EXISTING 5'x3' ELLIPTICAL PIPE
84' PIPE CULVERTS, TYPE 2, CORRUGATED STEEL, EQRS 60"
38' RT - 46' LT
H 576.86 - 576.23
2 EA. METAL END SECTIONS, EQRS 60"
RIP-RAP CLASS A-4 10' x 25'

WILLIAM M. ABBOTT &
BETTY B. ABBOTT

LEGEND
TREE REMOVAL, ACRES



STA. 339+00 to 343+00
EARTH EX. = 174.7 CU.YDS.
EMB. = 711.8 CU.YDS.
HAUL IN = 580.8 CU.YDS.

PLAN	DATE
SURVEYED	BY
ALIGNED	BY
CHECKED	BY
RT. OF WAY	BY
CHECKED	BY
NO.	NO.
ADD. FILE NAME	

PROFILE	DATE
SURVEYED	BY
GRADES	BY
CHECKED	BY
NO. NOTED	BY
STRUCTURE	BY
NOTATNS	BY
CHRD	BY
NO.	NO.