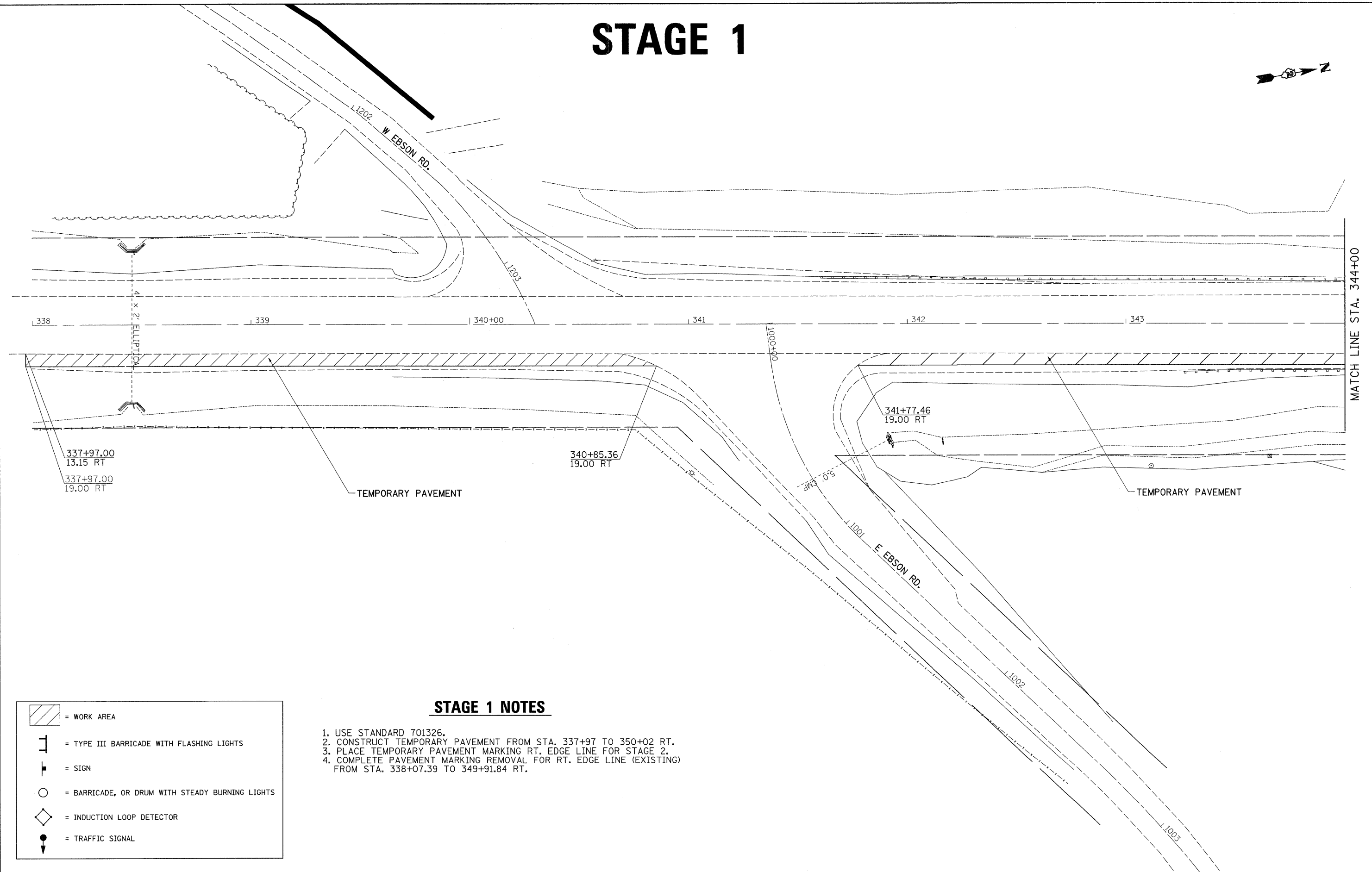
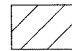







STAGE 1



STAGE 1 NOTES

1. USE STANDARD 701326.
2. CONSTRUCT TEMPORARY PAVEMENT FROM STA. 337+97 TO 350+02 RT.
3. PLACE TEMPORARY PAVEMENT MARKING RT. EDGE LINE FOR STAGE 2.
4. COMPLETE PAVEMENT MARKING REMOVAL FOR RT. EDGE LINE (EXISTING) FROM STA. 338+07.39 TO 349+91.84 RT.

	= WORK AREA
	= TYPE III BARRICADE WITH FLASHING LIGHTS
	= SIGN
	= BARRICADE, OR DRUM WITH STEADY BURNING LIGHTS
	= INDUCTION LOOP DETECTOR
	= TRAFFIC SIGNAL

FILE NAME = c:\projects\p206006\06006stg.dgn	USER NAME = hansonke	DESIGNED -	REVISED -	STATE OF ILLINOIS DEPARTMENT OF TRANSPORTATION	STAGING PLANS	F.A.P. RTE. 308	SECTION 109BR-5	COUNTY WHITESIDE	TOTAL SHEETS 83	SHEET NO. 22	
PLOT SCALE = 20.0000 ft / IN.	CHECKED -	REVISED -	SCALE:			SHEET NO. OF SHEETS	STA. TO STA.	CONTRACT NO. 64C25			
PLOT DATE = Thu Jul 31 09:41:11 2008	DATE -	REVISED -	FED. ROAD DIST. NO. ILLINOIS FED. AID PROJECT								