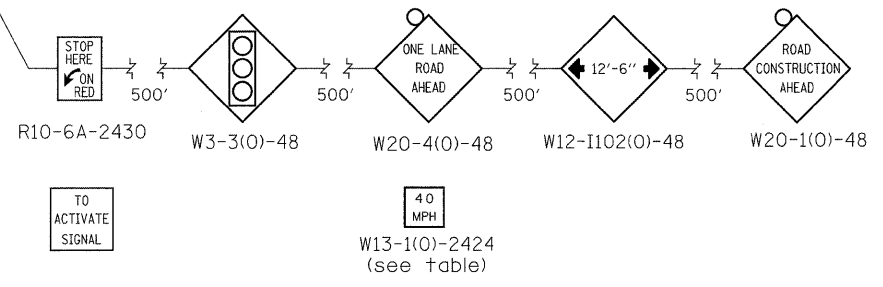
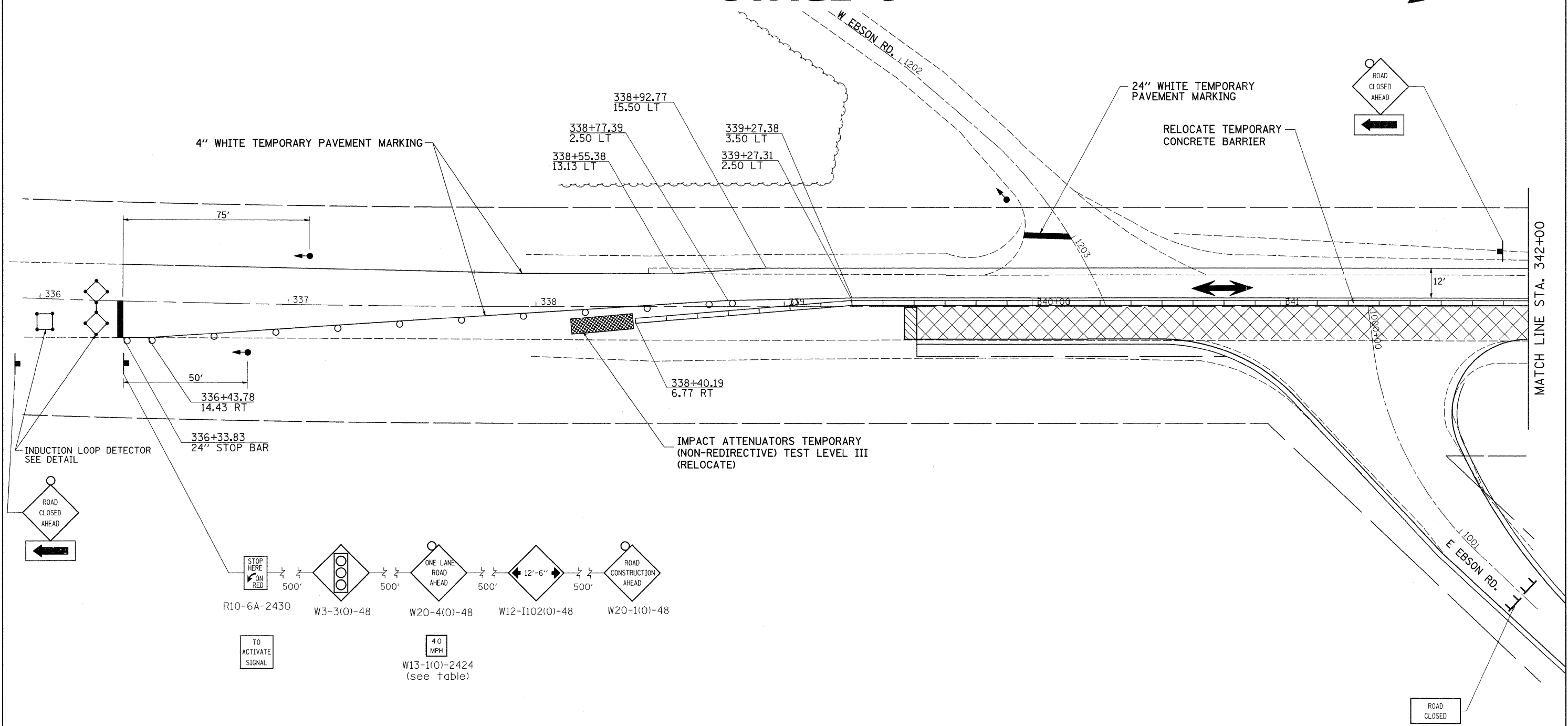


STAGE 3



- = WORK AREA
- = TYPE III BARRICADE WITH FLASHING LIGHTS
- = SIGN
- = BARRICADE, OR DRUM WITH STEADY BURNING LIGHTS
- = INDUCTION LOOP DETECTOR
- = TRAFFIC SIGNAL

STAGE 3 NOTES

1. USE STANDARD 701321.
2. CLOSE E. EBSON RD.
3. CONSTRUCT BRIDGE RT FROM STAGE CONSTRUCTION LINE.
4. CONSTRUCT FULL DEPTH PAVEMENT FROM STA. 345+58.61 RT TO STA. 348+55 RT
5. CONSTRUCT FULL WIDTH SHOULDERS AND GUARDRAIL FROM STA. 340+52.22 RT TO STA. 348+55.00 RT
6. CONSTRUCT TEMPORARY RAMPS.
7. INSTALL GUARDRAIL.
8. BARRIER WALL TO BE PINNED IN 6 LOCATIONS EACH SIDE OF THE BRIDGE.
9. STAGE 4 WILL CONSIST OF FINAL SURFACE COURSE AND PAVEMENT MARKINGS DONE UNDER FLAGGERS.

- TEMPORARY RAMP
STA 343+90 TO STA 343+95
STA 345+58.61 TO STA 345+63.61
STA 348+55 TO STA 348+60
STA. 339+48.50 TO STA. 339+53.50
- LEVEL BINDER (MACHINE METHOD)
STA 339+53.50 TO STA 343+95

FILE NAME = c:\projects\p206006\d06006stg.dgn	USER NAME = hensonke	DESIGNED -	REVISED -	STATE OF ILLINOIS DEPARTMENT OF TRANSPORTATION	STAGING PLANS			F.A.P RTE. 308	SECTION 109BR-5	COUNTY WHITESIDE	TOTAL SHEETS 83	SHEET NO. 27
PLOT SCALE = 20,000 ft / in.	CHECKED -	REVISIED -	REVISIED -		SCALE:	SHEET NO.	OF	SHEETS	STA.	TO STA.	CONTRACT NO. 64C25	
PLOT DATE = Thu Jul 31 09:41:12 2008	DATE -	REVISIED -	REVISIED -		FED. ROAD DIST. NO. ILLINOIS FED. AID PROJECT							