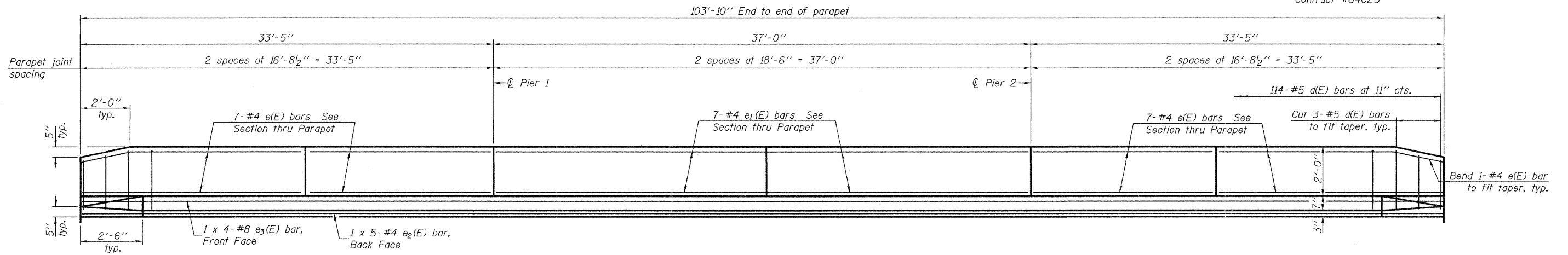


STATE OF ILLINOIS
DEPARTMENT OF TRANSPORTATION

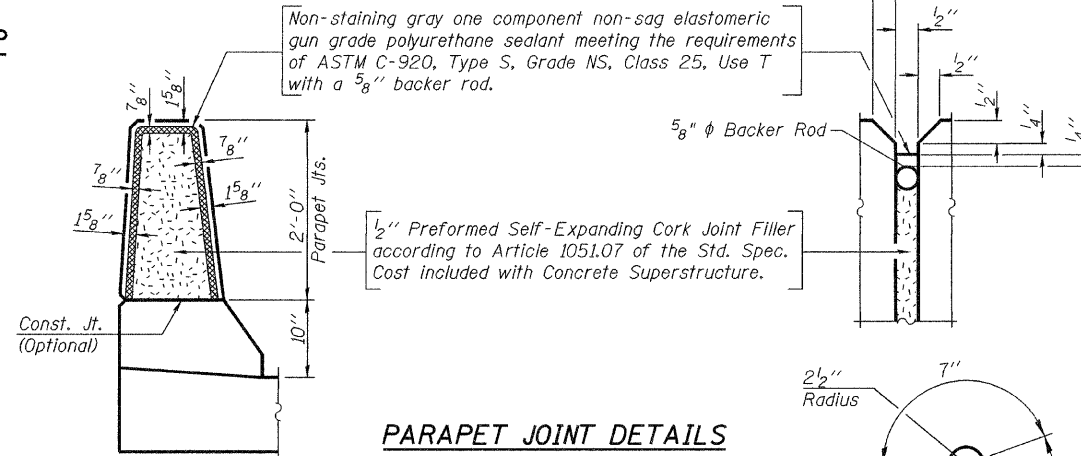
ROUTE NO.	SECTION	COUNTY	TOTAL SHEETS	SHEET NO.	SHEET NO. 10
FAP 308	109BR-5	WHITESIDE	83	44	19 SHEETS
FED. ROAD DIST. NO. 7		ILLINOIS		FED. AID PROJECT-	

Contract #64C25

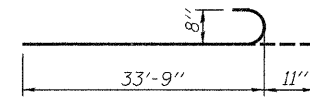


INSIDE ELEVATION OF PARAPET

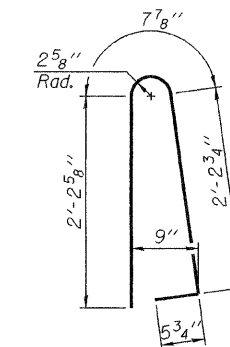
Non-staining gray one component non-sag elastomeric gun grade polyurethane sealant meeting the requirements of ASTM C-920, Type S, Grade NS, Class 25, Use T with a 5/8" backer rod.



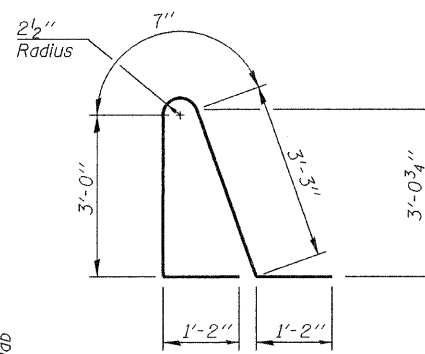
PARAPET JOINT DETAILS



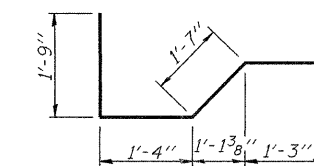
BAR b2(E)



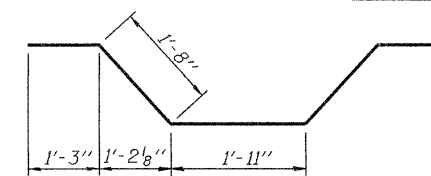
BAR d(E)



BAR d1(E)



BAR x(E)

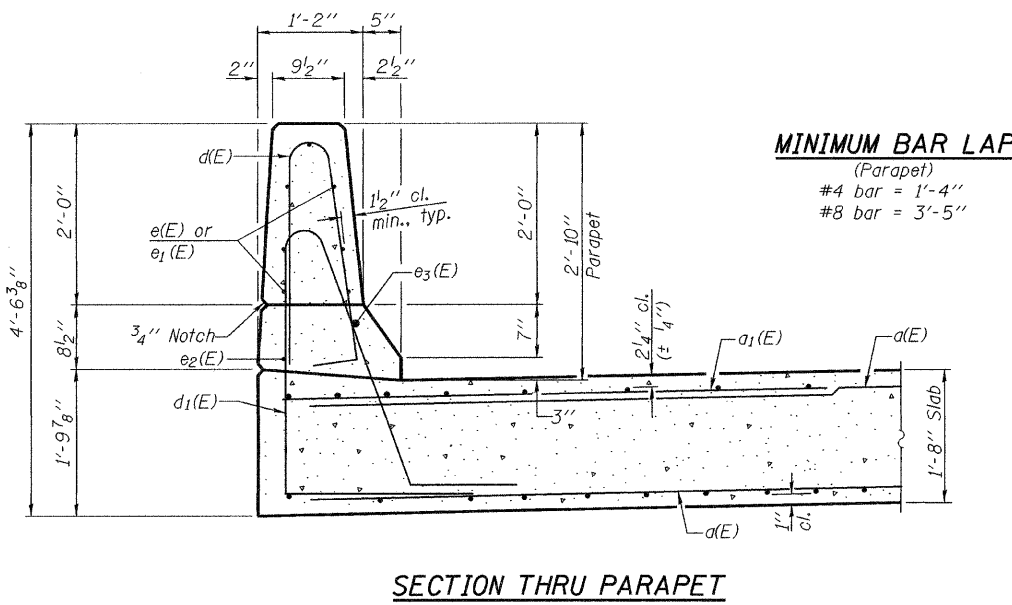


BAR x1(E)

SUPERSTRUCTURE
BILL OF MATERIAL

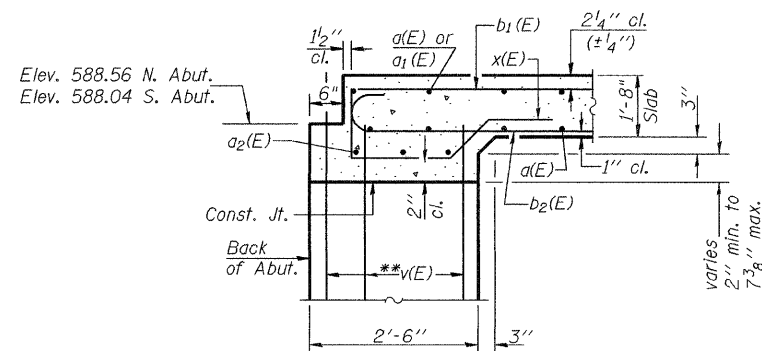
Bar	No.	Size	Length	Shape
a(E)	364	#5	21'-3"	—
a1(E)	154	#6	6'-0"	—
a2(E)	24	#5	24'-6"	—
b(E)	172	#8	34'-9"	—
b1(E)	88	#5	20'-8"	—
b2(E)	172	#8	34'-8"	—
b3(E)	86	#7	38'-0"	—
d(E)	228	#5	5'-7"	—
d1(E)	228	#5	9'-2"	—
e(E)	56	#4	16'-5"	—
e1(E)	28	#4	18'-2"	—
e2(E)	10	#4	21'-10"	—
e3(E)	8	#8	28'-6"	—
x(E)	88	#5	5'-11"	—
x1(E)	88	#5	7'-9"	—
Reinforcement Bars, Epoxy Coated			Pound	57,000
Concrete Superstructure			Cu. Yds.	310.4

Bars indicated thus 1 x 4 - #8 etc. Indicates 1 line of bars with 4 lengths per line.



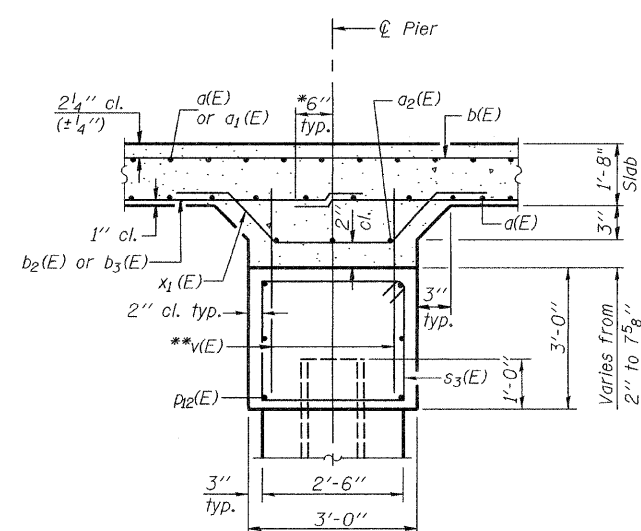
SECTION THRU PARAPET

MINIMUM BAR LAP
(Parapet)
#4 bar = 1'-4"
#8 bar = 3'-5"



SECTION A-A

**v(E) bars billed with abutments.
Horizontal Dimensions @ Rt. L's to Abutments.



SECTION B-B

*Measured along @ Roadway
**v(E) bars billed with piers.
Horizontal Dimensions @ Rt. L's to Pier

DESIGNED	Dewey H. Coultas
CHECKED	Stephen M. Ryan
DRAWN	BECKY M. LEACH
CHECKED	DHC/SMR

September 2, 2008
EXAMINED *Thomas J. Domagalak*
PASSED *Ralph E. Anderson*
ENGINEER OF BRIDGES AND STRUCTURES

SUPERSTRUCTURE DETAILS
F.A.P. ROUTE 308 - SECTION 109BR-5
WHITESIDE COUNTY
STATION 344+76.69
STRUCTURE NO. 098-0114