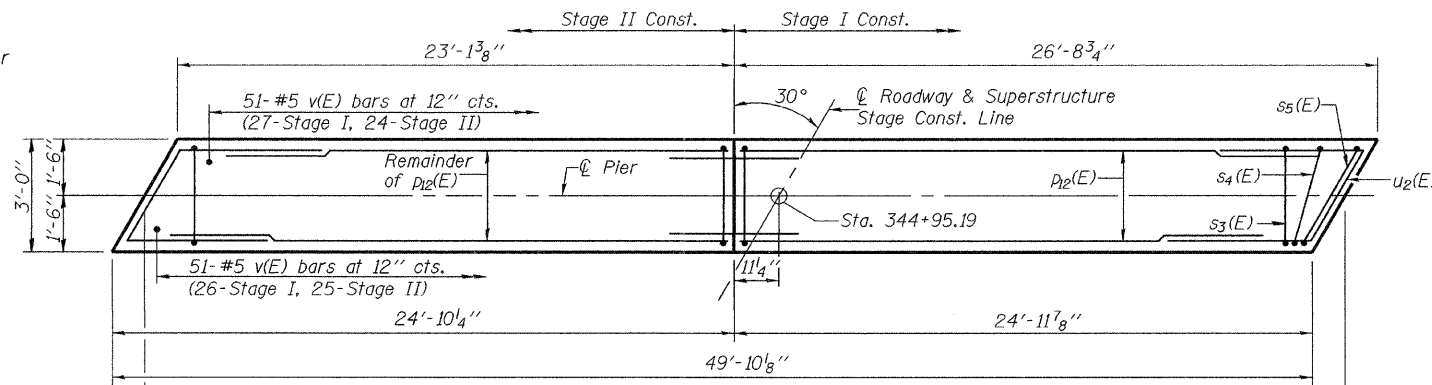


STATE OF ILLINOIS  
DEPARTMENT OF TRANSPORTATION

ROUTE NO.	SECTION	COUNTY	TOTAL SHEETS	SHEET NO.	SHEET NO. 14
FAP 308	109BR-5	WHITESIDE	83	48	19 SHEETS
FED. ROAD DIST. NO. 7	ILLINOIS		FED. AID PROJECT-		

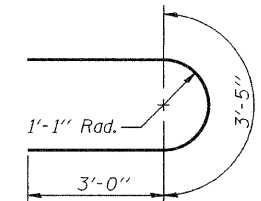
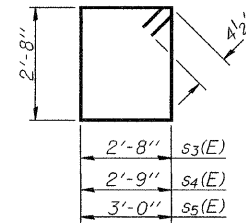
Contract #64C25

Note:  
Pier piles shall be driven to a tip elevation of at least 542.5 regardless of the attainment of Nominal Required Bearing. For details of piles, see sheet 15 of 19.  
For Bar Splicer Assembly details, see sheet 16 of 19.  
If a portion of the pier wall or concrete encasement is under water, reinforcement may be placed underwater into forms. Concrete shall be tremied according to Article 503.08 of the Standard Specifications to an elevation of 1'-0" above the water line at the time of construction.

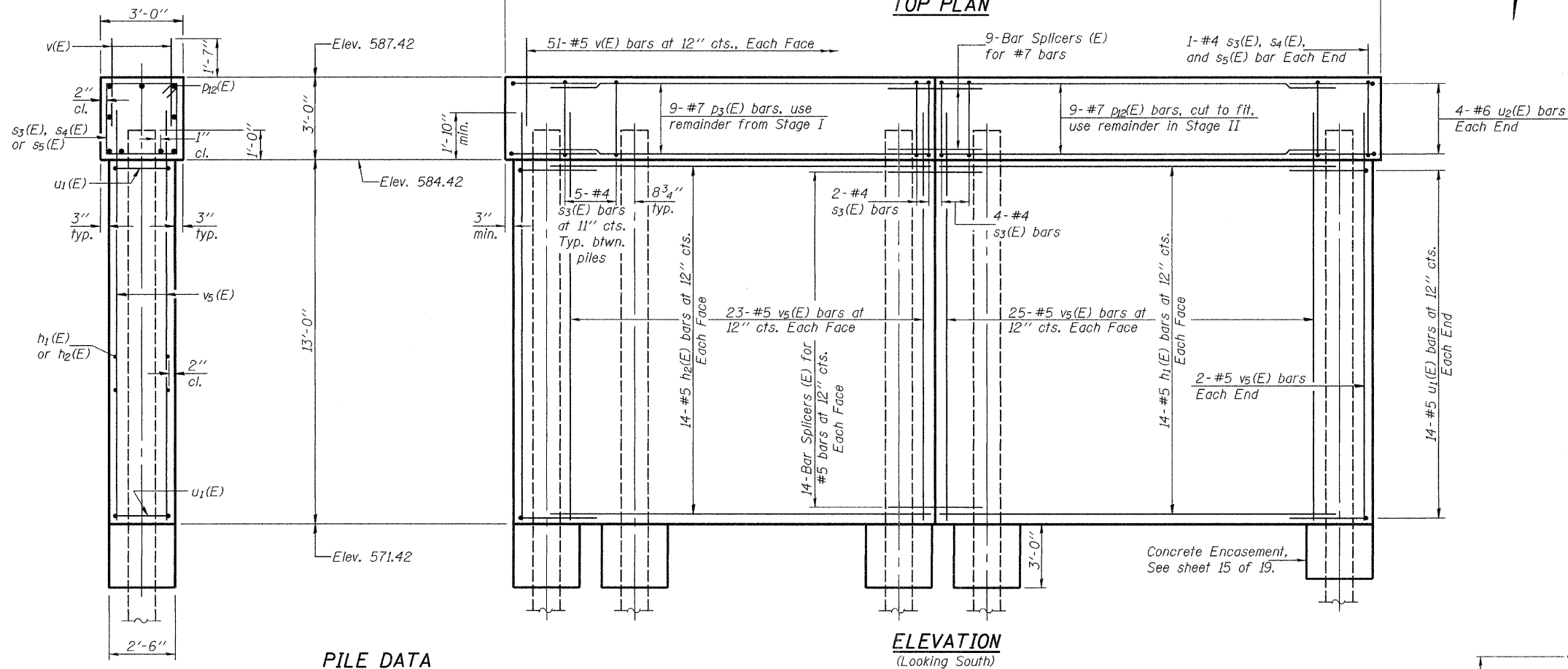


TOP PLAN

BAR s3(E), s4(E), and s5(E)



BARS u1(E)

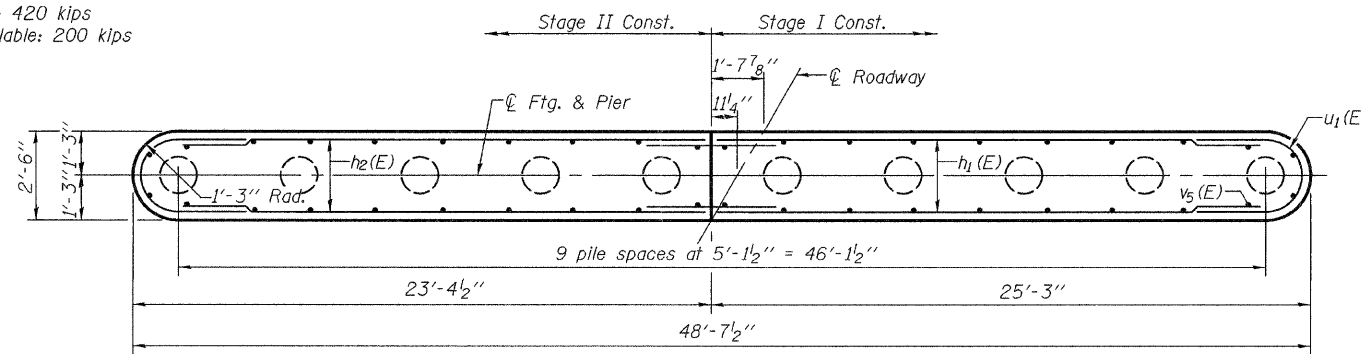


ELEVATION  
(Looking South)

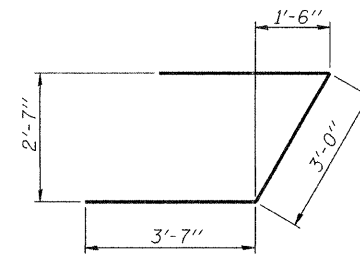
END VIEW

PILE DATA

Type: Metal Shell 14" x 0.312"  
Nominal Required Bearing: 420 kips  
Factored Resistance Available: 200 kips  
Est. Length: 67 ft.  
No. Production Piles: 10  
No. Test Piles: 0



FOOTING PLAN



BAR u2(E)

BILL OF MATERIAL

Bar	No.	Size	Length	Shape
h1(E)	28	#5	23'-10"	—
h2(E)	28	#5	22'-0"	—
p2(E)	9	#7	49'-1"	—
s3(E)	48	#4	11'-5"	□
s4(E)	2	#4	11'-7"	□
s5(E)	2	#4	12'-1"	□
u1(E)	28	#5	9'-5"	U
u2(E)	8	#6	10'-2"	U
v(E)	102	#5	3'-2"	—
v5(E)	100	#5	15'-0"	—
Structure Excavation		Cu. Yd.	13	
Concrete Structures		Cu. Yd.	74.5	
Reinforcement Bars, Epoxy Coated		Pound	4,940	
Furnishing Metal Shell Piles 14"x0.312"		Foot	670	
Driving Piles		Foot	670	
Concrete Encasement		Cu. Yd.	5.5	
Underwater Structure Excavation Protection - Location 2		Each	1	

PIER 2  
F.A.P. ROUTE 308 - SECTION 109BR-5  
WHITESIDE COUNTY  
STATION 344+76.69  
STRUCTURE NO. 098-0114

DESIGNED	Dewey H. Coultas
CHECKED	Stephen M. Ryan
DRAWN	BECKY M. LEACH
CHECKED	DHC/SMR

September 2, 2008  
EXAMINED *Thomas J. Donagale*  
PASSED *Ralph E. Anderson*  
ENGINEER OF BRIDGES AND STRUCTURES