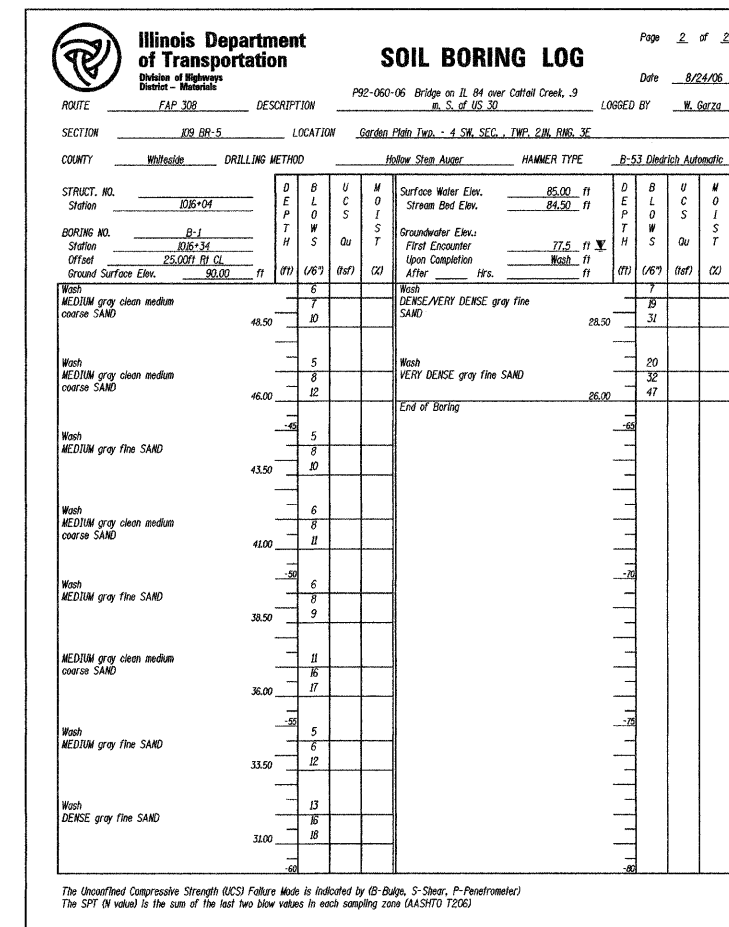
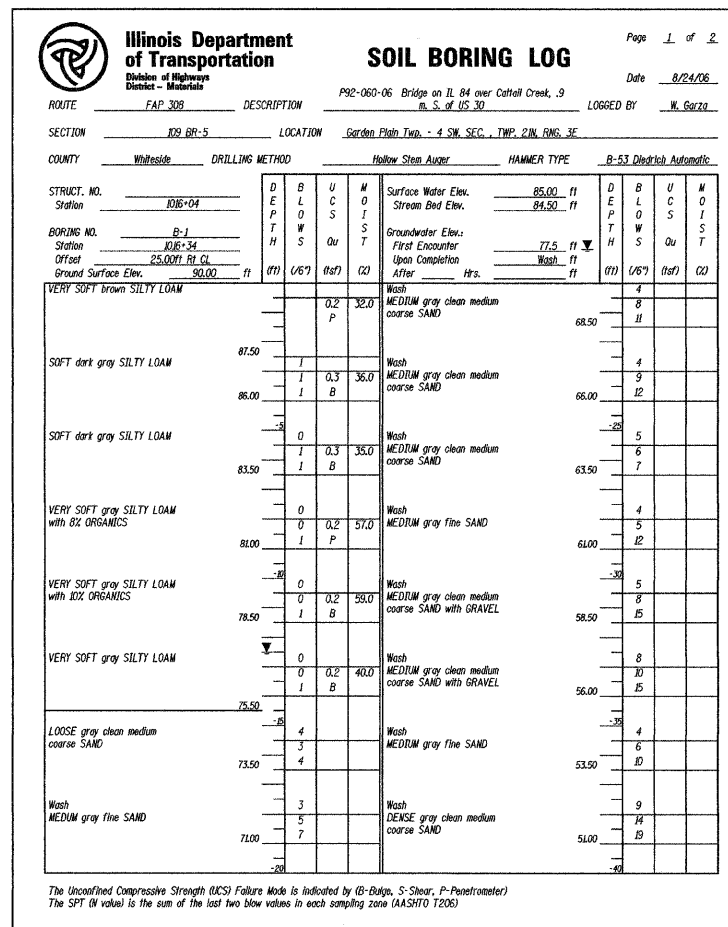


STATE OF ILLINOIS  
DEPARTMENT OF TRANSPORTATION



Note:  
Sta. 1016+34 = Sta. 345+11.69 on proposed  $\mathcal{L}$ .

**BORING LOGS**  
**F.A.P. ROUTE 308 - SECTION 109BR-5**  
**WHITESIDE COUNTY**  
**STATION 344+76.69**  
**STRUCTURE NO. 098-0114**