

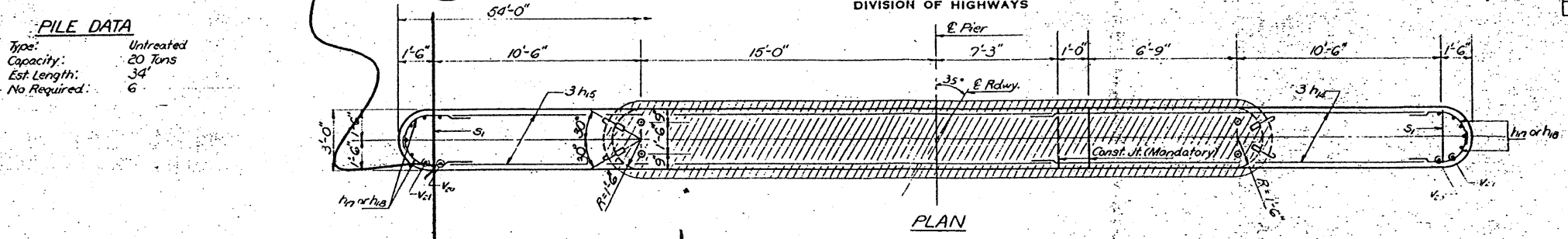
EXISTING STRUCTURE PLANS (FOR REFERENCE ONLY)

STATE OF ILLINOIS
DEPARTMENT OF PUBLIC WORKS & BUILDINGS
DIVISION OF HIGHWAYS

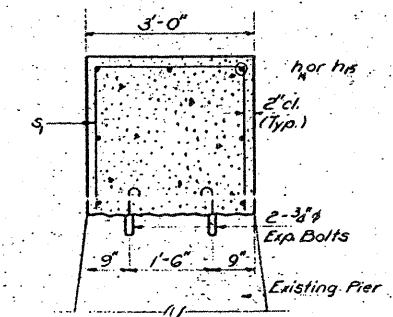
DATE	PROJECT	COUNTY	SHEET NO.	SHEET OF
10/90	109BR	WHITESIDE	10	10
				SHEET NO. 3 8 SHEETS

PILE DATA
 Type: Untreated
 Capacity: 20 Tons
 Est. Length: 34'
 No. Required: 6

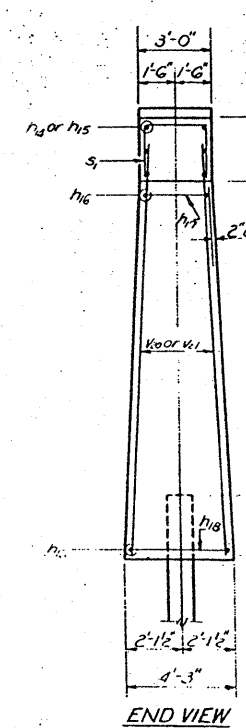
Ref Line C



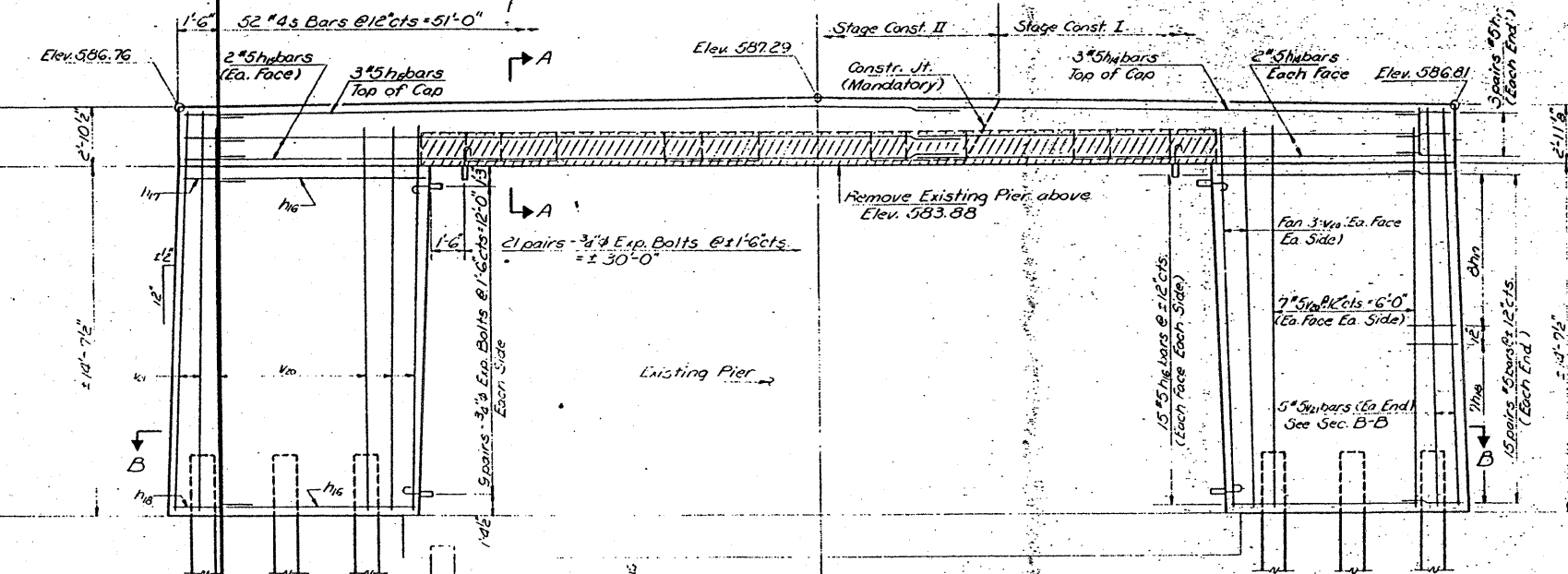
PLAN



SEC. A-A

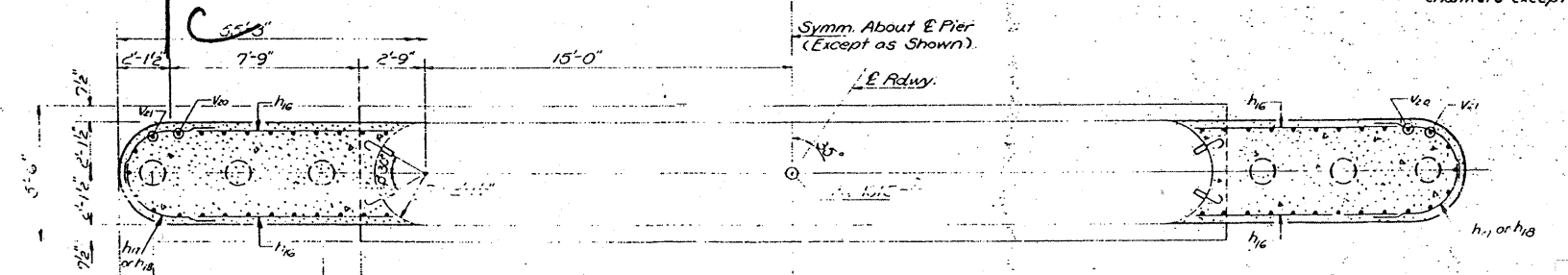


END VIEW



ELEVATION
Looking North

Note:
Hatched area indicates
Concrete Removal.
All edges shall be 3/8"
Chamfers except as shown.



SEC. B-B

BILL OF MATERIAL

Bar	No	Size	Length	Shape
h1a	7	#5	19'-6"	U
h1b	7	#5	32'-9"	U
h1c	60	#5	9'-6"	U
h1d	44	#5	5'-0"	U
h1e	28	#5	5'-6"	U
s1	52	#4	8'-0"	U
v1a	40	#5	16'-0"	U
v1b	10	#5	17'-3"	U
Class A Concrete		Cu. Yds.	993	
Reinforcement Bars		Lbs.	2490	
Concrete Removal		Cu. Yds.	6	
Untreated Piles		Lin. Ft.	204	
Expansion Bolts 3/8"		Ea.	78	

DESIGNED *Stanley S. Lin*
 CHECKED *Alan Coulter*
 DRAWN *J. Sutherland*
 CHECKED *JLL*

APPROVED
 EXAMINED
 PASSED
 APPROVED

FOR REFERENCE ONLY

PIER
S.B.I. RT. 80 SEC. 109 BR
WHITESIDE COUNTY
STATION 1015+99