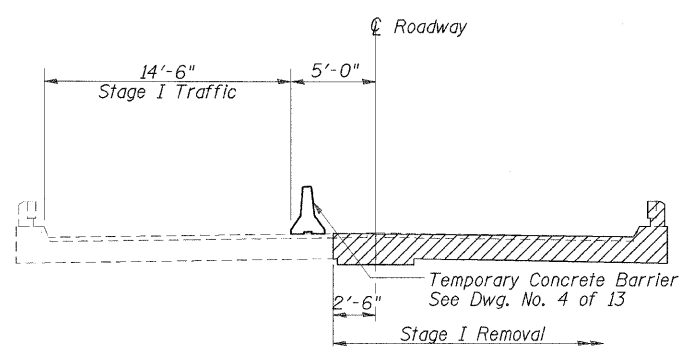


ROUTE NO.	SECTION	COUNTY	TOTAL SHEETS	SHEET NO.
FAS 338	34BR	IROQUOIS	49	26
STA	TO STA			
FED. ROAD DIST. NO. 3	ILLINOIS	FED. AID PROJECT-		

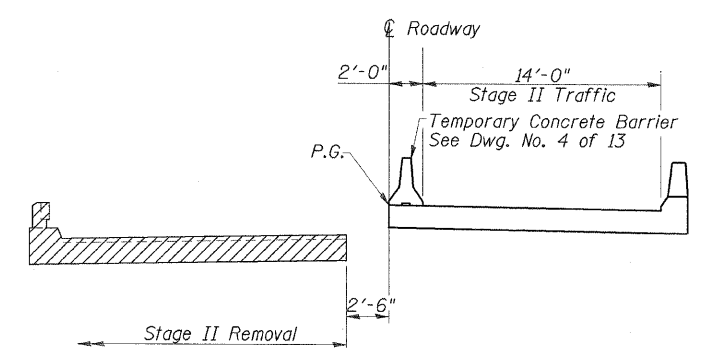
DWG. NO. 3 OF 13
CONTRACT NO. 66610

STRUCTURE INDEX OF SHEETS

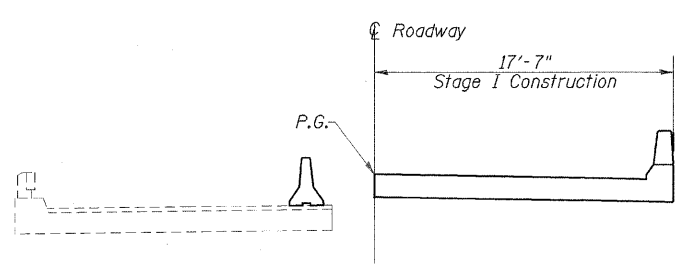
General Plan	Dwg. No. 1 of 13
General Data	Dwg. No. 2 of 13
Stage Construction Details	Dwg. No. 3 of 13
Temporary Concrete Barrier	Dwg. No. 4 of 13
Top of Slab Elevations	Dwg. No. 5 of 13
Superstructure	Dwg. No. 6 of 13
Superstructure Details	Dwg. No. 7-8 of 13
Abutments	Dwg. No. 9 of 13
Piers	Dwg. No. 10 of 13
Metal Shell Pile Details	Dwg. No. 11 of 13
Bar Splicer Assembly Details	Dwg. No. 12 of 13
Soil Borings	Dwg. No. 13 of 13



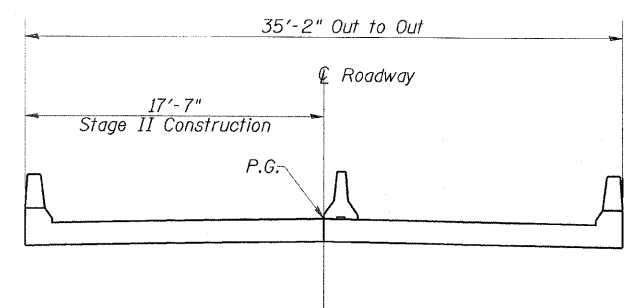
STAGE I REMOVAL



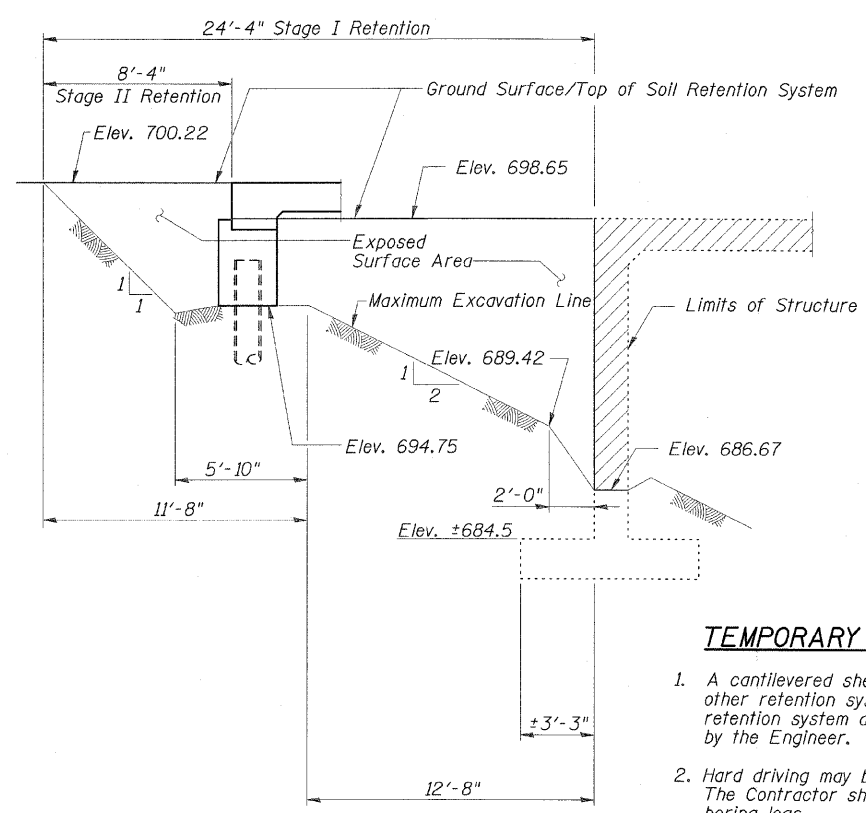
STAGE II REMOVAL



STAGE I CONSTRUCTION



STAGE II CONSTRUCTION



TEMPORARY SOIL RETENTION SYSTEM NOTES

1. A cantilevered sheet piling design does not appear feasible and additional members or other retention systems may be necessary. The Contractor shall submit a temporary soil retention system design including plan details and calculations for review and acceptance by the Engineer.
2. Hard driving may be encountered during the Temporary Soil Retention System installation. The Contractor shall provide driving equipment for the soil conditions indicated on the boring logs.

TEMPORARY SOIL RETENTION SYSTEM
(North Abutment Shown; South Abutment Similar)

STAGE CONSTRUCTION NOTES

1. Hatched areas indicate removal of existing concrete slab.
2. All staging sections are looking North.
3. For quantity of Temporary Concrete Barrier, see roadway plans.

ESCA
CONSULTANTS, INC.

DESIGNED BY:	ELH	12/04
DRAWN BY:	HAG	12/04
CHECKED BY:	ELH	04/06
APPROVED BY:	RDP	04/06

STAGE CONSTRUCTION DETAILS
US ROUTE 45 OVER
SPRING CREEK
FAS ROUTE 338 - SECTION 34BR
IROQUOIS COUNTY
STATION 2146+00
STRUCTURE NO. 038-0214