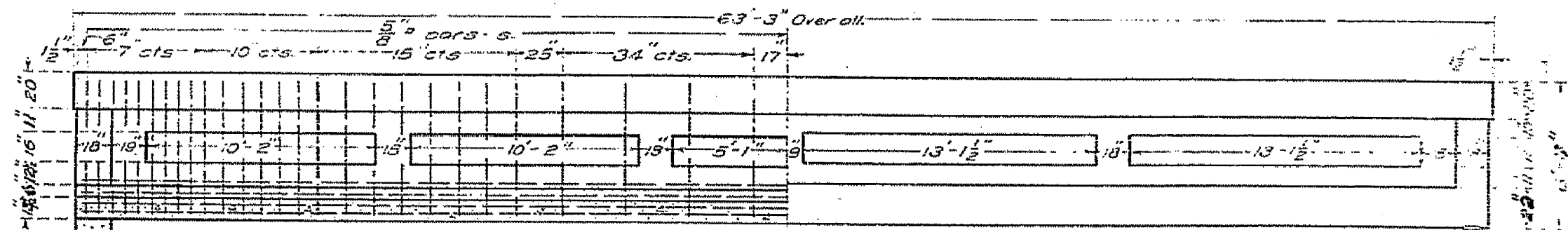


ROUTE NO.	SECTION	COUNTY	TOTAL SHEETS	SHEET NO.
FAS 338	34BR	IROQUOIS	49	38
STA.	TO STA.			
FED. ROAD DIST. NO. 3	ILLINOIS	FED. AID PROJECT		

CONTRACT NO. 66610

STATE OF ILLINOIS  
 DEPARTMENT OF TRANSPORTATION  
 STATE OF ILLINOIS  
 STATE HIGHWAY DEPARTMENT  
**REINFORCED CONCRETE GIRDER**  
**SPAN 60 FT. ROADWAY 20 FT.**

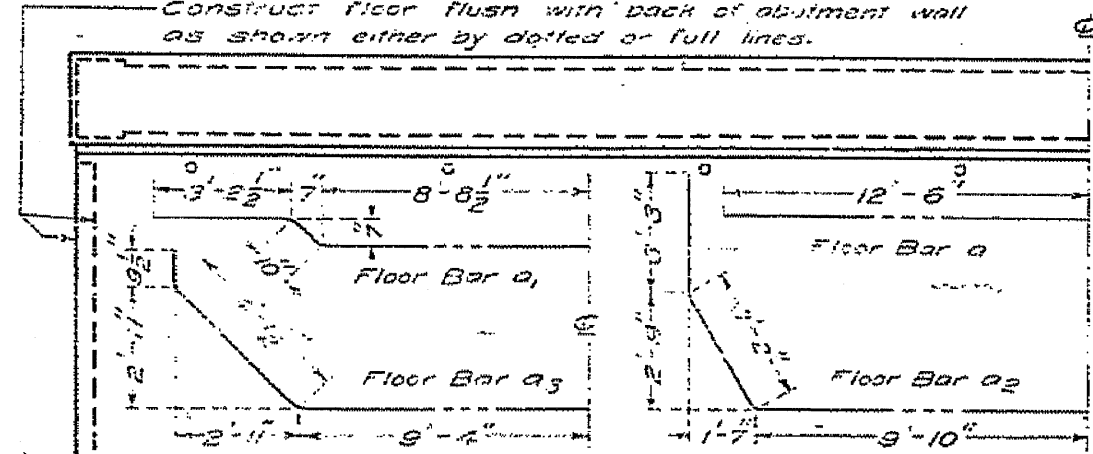
ROUTE NO.	COUNTY	SEC.	TOTAL SHEETS	SHEET NO.	SHEET NO. 1
25	IROQUOIS	34	31	28	2 sheets



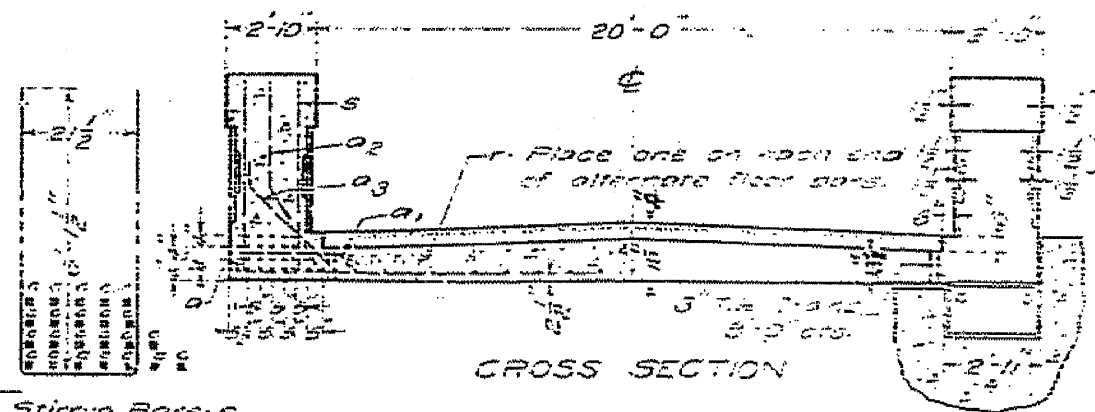
**ELEVATION**

Construct floor flush with back of abutment wall as shown either by dotted or full lines.

2" diameter for joint  
 Space around rockers to be filled with asphalt



**HALF PLAN**



**CROSS SECTION**

Stirrup Bars - s

Class A concrete to be used throughout. Proportions - 1 2/4

**BILL OF MATERIAL**

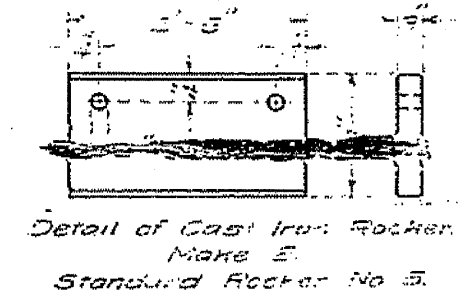
Bars	No.	Size	Length
a	36	1"	25'-0"
a1	36	1"	25'-6"
a2	37	1"	32'-6"
a3	37	1"	28'-6"
b	22	1/2"	32'-6"
b1	25	3/8"	32'-6"
c	46	1 1/2"	62'-6"
r	150	3/8"	8'-0"
s	108	5/8"	13'-0"
Steel - Lbs.			33100.
Concrete - Cu Yds			136.5
Weight of 2 Rockers Lbs			928.
Weight of 1 Plate Lbs			375.

STATION 2146+00  
 STATE BOND 1550E-ROUTE 25  
 SECTION 34-1200105 CO.

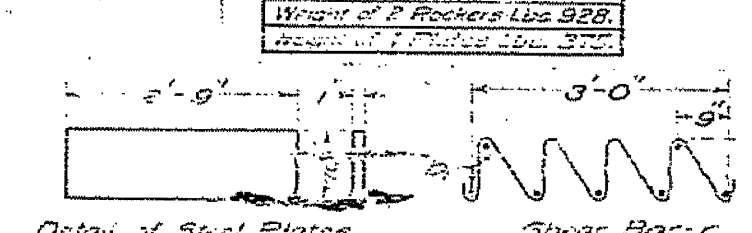
DESIGNED BY  
**J. J. [Signature]**  
 ENGINEER OF DESIGN

EXAMINED BY  
**[Signature]**  
 CIVIL ENGINEER

APPROVED BY  
**[Signature]**  
 STATE HIGHWAY ENGINEER



Detail of Cast Iron Rocker. Make #. Standard Rocker No. 5.



Detail of Steel Plates. Make #. Surface adjacent to rocker to be planed. Standard Plate No. 5.

655