

F.A.P. RTE.	SECTION	COUNTY	TOTAL SHEETS	SHEET NO.
80	06-1,2RS-3, I	BUREAU	116	45
STA. _____ TO STA. _____		FED. ROAD DIST. NO. ILLINOIS FED. AID PROJECT		

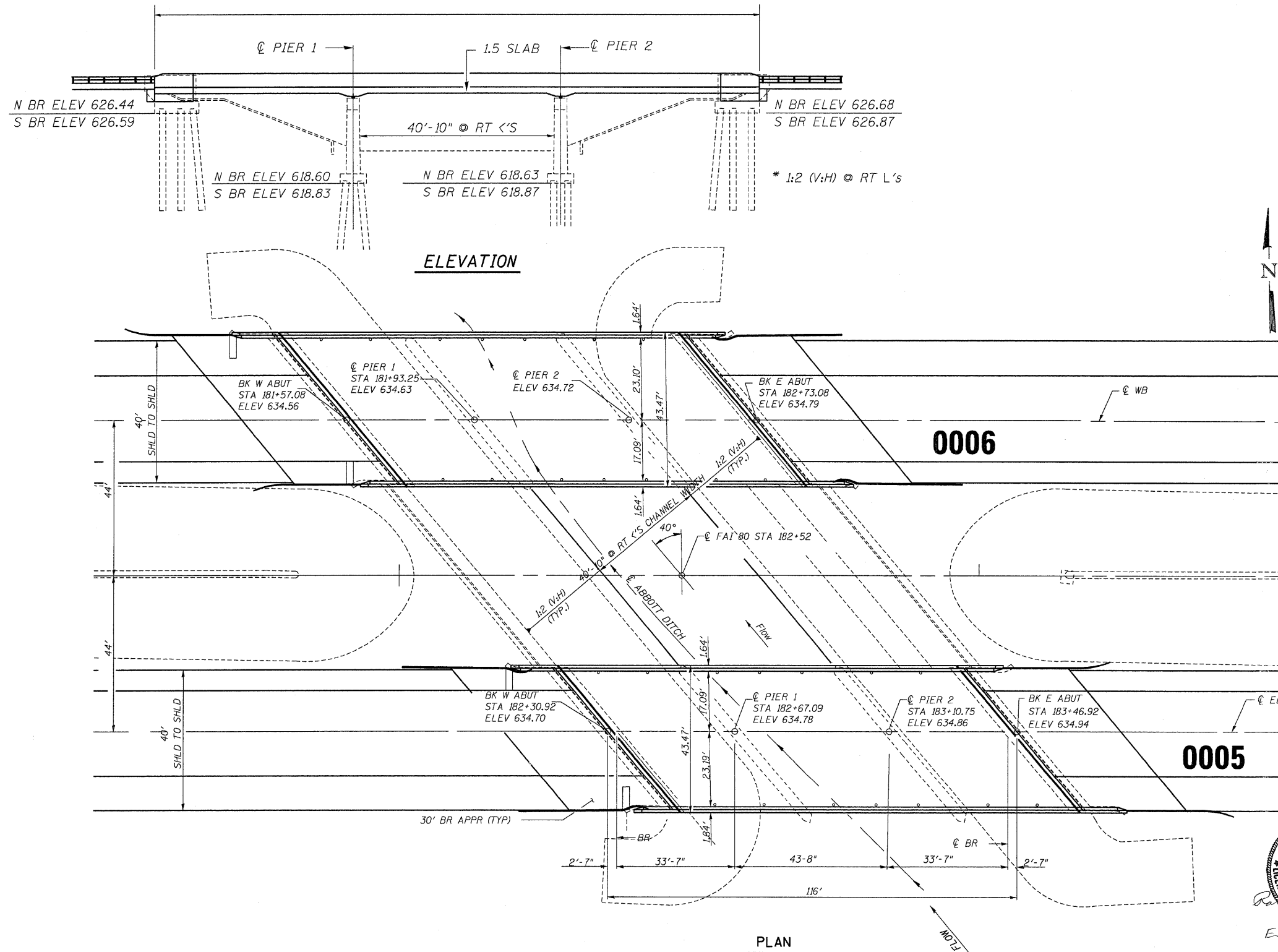
EXISTING STRUCTURE

THE EXISTING STRUCTURE CONSISTS OF A 3 SPAN CONTINUOUS CONCRETE SLAB W/SOLID FACE PIERS ON SPREAD FOOTINGS W/TIMBER PILING.

IT HAS A 116'-0" BACK TO BACK ABUTMENT LENGTH. THE STRUCTURE IS TO REMAIN IN PLACE WITH PROPOSED REPAIRS.

GENERAL NOTES

- 1.) PLAN DIMENSIONS AND DETAILS RELATIVE TO EXISTING PLANS ARE SUBJECT TO ROUTINE VARIATION. THE CONTRACTOR SHALL FIELD VERIFY EXISTING DIMENSIONS AND DETAILS AFFECTING NEW CONSTRUCTION AND MAKE NECESSARY APPROVED ADJUSTMENTS PRIOR TO CONSTRUCTION OR ORDERING OF MATERIALS. SUCH VARIATIONS SHALL NOT BE CAUSE FOR ADDITIONAL COMPENSATION FOR A CHANGE IN SCOPE OF THE WORK, HOWEVER, THE CONTRACTOR WILL BE PAID FOR THE QUANTITY ACTUALLY FURNISHED BASED UPON THE UNIT PRICE BID FOR THE WORK.
- 2.) LAYOUT OF THE SLOPE PROTECTION SYSTEM MAY BE VARIED TO SUIT GROUND CONDITIONS IN THE FIELDS AS DIRECTED BY THE ENGINEER.



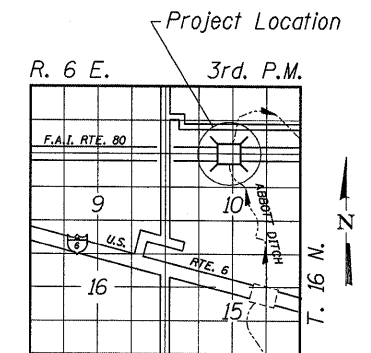
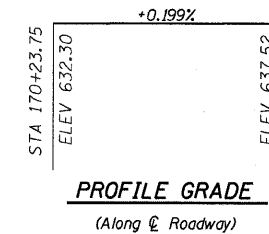
PROPOSED WORK

- 1.) CHANNEL EXCAVATION
- 2.) PLACEMENT OF SCOUR COUNTERMEASURE

EXISTING CONDITIONS

(TO BE USED FOR BLOCK DESIGN)

STREAM SLOPE	14.5 FT/MILE
MAX DESIGN VELOCITY	6 FT / SEC
SHEAR STRESS OF EXISTING SOIL	0.19 TONS/SQ FT



PROFILE GRADE
(Along @ Roadway)

LOCATION SKETCH
(NTS)

TOTAL BILL OF MATERIALS		
ITEM	UNIT	TOTAL
ARTICULATED BLOCK REVETMENT MAT	SQ YDS	1058
GEOTECHNICAL FABRIC (SPECIAL)	SQ YDS	1058
CHANNEL EXCAVATION	CU YDS	1103
BEDDING MATERIAL (SPECIAL)	CU YDS	190
SLOPE WALL REMOVAL	SQ YDS	180

GENERAL PLAN & ELEVATION

FAI ROUTE 80 OVER ABBOTT DITCH
SECTION 06-1B-2R
BUREAU COUNTY
STATION 182+52
SN 006-0005 EB
SN 006-0006 WB



PLOT DATE = Sep 04, 2008 - 08:02:03 AM
 FILE NAME = c:\p\work\p\182+52\182+52\182+52.dgn
 PLOT SCALE = 21.3144 / IN.
 USER NAME = bmboggs