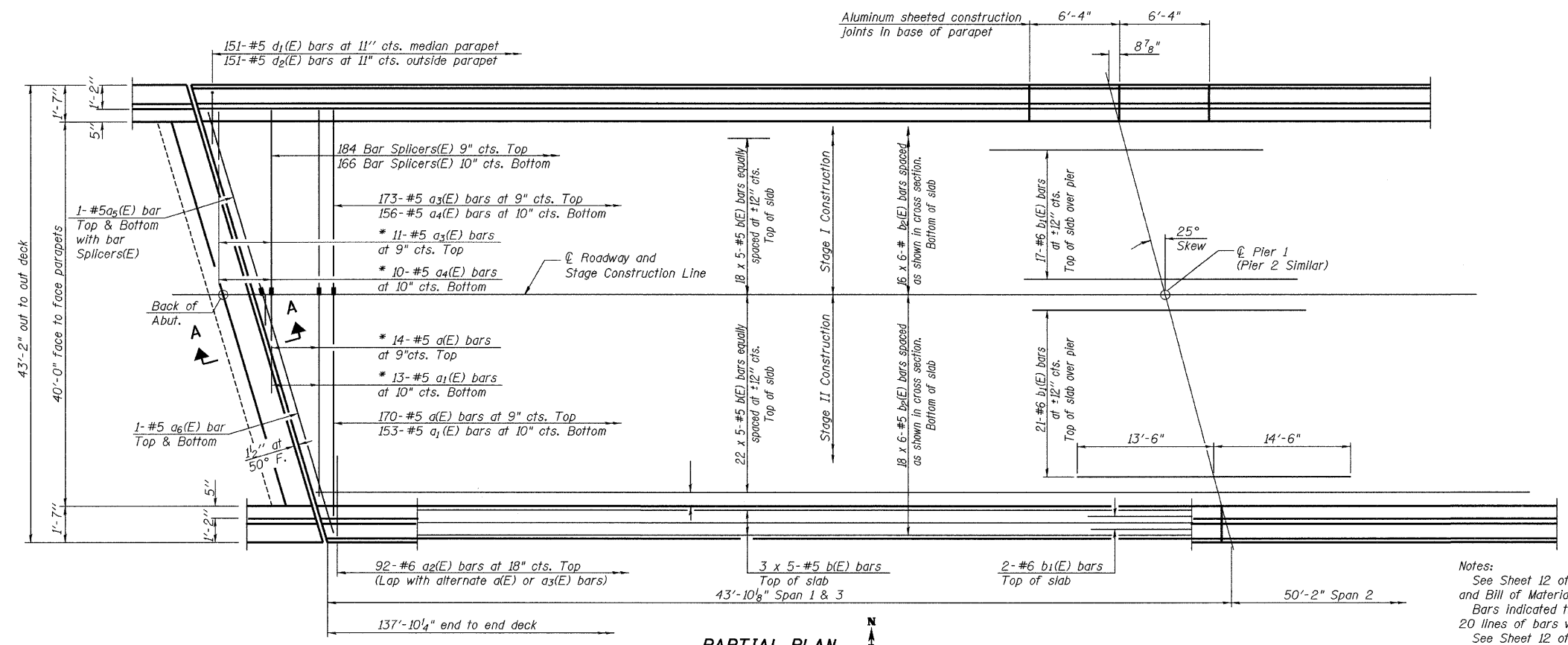


STATE OF ILLINOIS
DEPARTMENT OF TRANSPORTATION

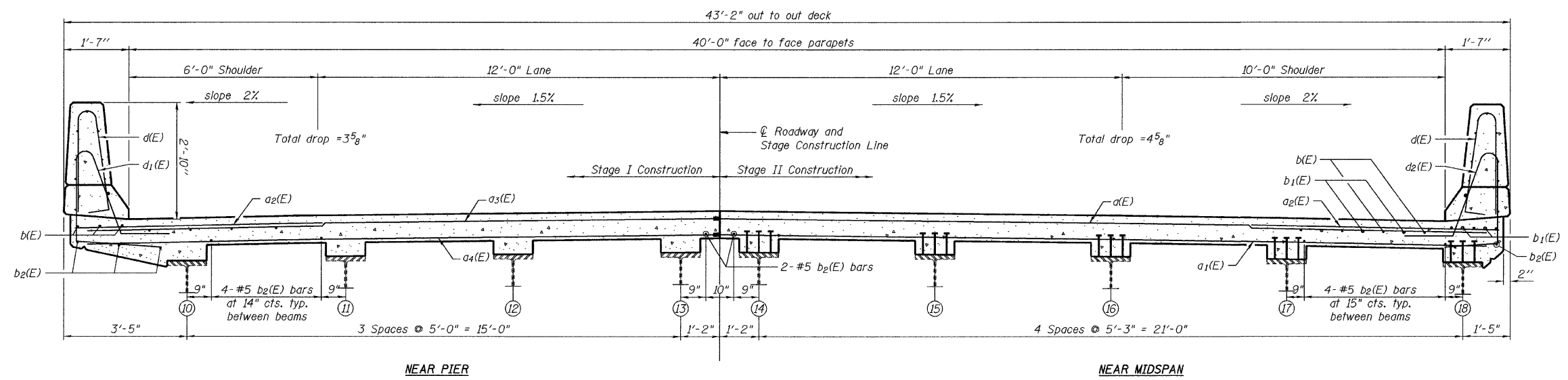
ROUTE NO.	SECTION	COUNTY	TOTAL SHEETS	SHEET NO.	SHEET NO. 11
F.A.I. 80	*	BUREAU	116	60	29 SHEETS
FED. ROAD DIST. NO. 7	ILLINOIS	FED. AID PROJECT			

Contract #66623
* (06-1, 2)RS-3, I

* Order a(E), a₁(E), a₃(E), & a₄(E) bars full length. Cut to fit skew and use remainder of bars in opposite end.



Notes:
See Sheet 12 of 29 for superstructure details and Bill of Material.
Bars indicated thus 20 x 3-#5 etc. indicates 20 lines of bars with 3 lengths per line.
See Sheet 12 of 29 for parapet reinforcement.



DESIGNED	JKC
CHECKED	JLS
DRAWN	NOE
CHECKED	JKC

EASTBOUND
SUPERSTRUCTURE PLAN & CROSS SECTION
F.A.I. 80 (I-80) OVER COAL CREEK
SECTION (06-1, 2)RS-3, I
BUREAU COUNTY
SN 006-0007 (EB)
SN 006-0008 (WB)
STA. 202+80

CHAMLIN & ASSOCIATES
PERU ILLINOIS MORRIS