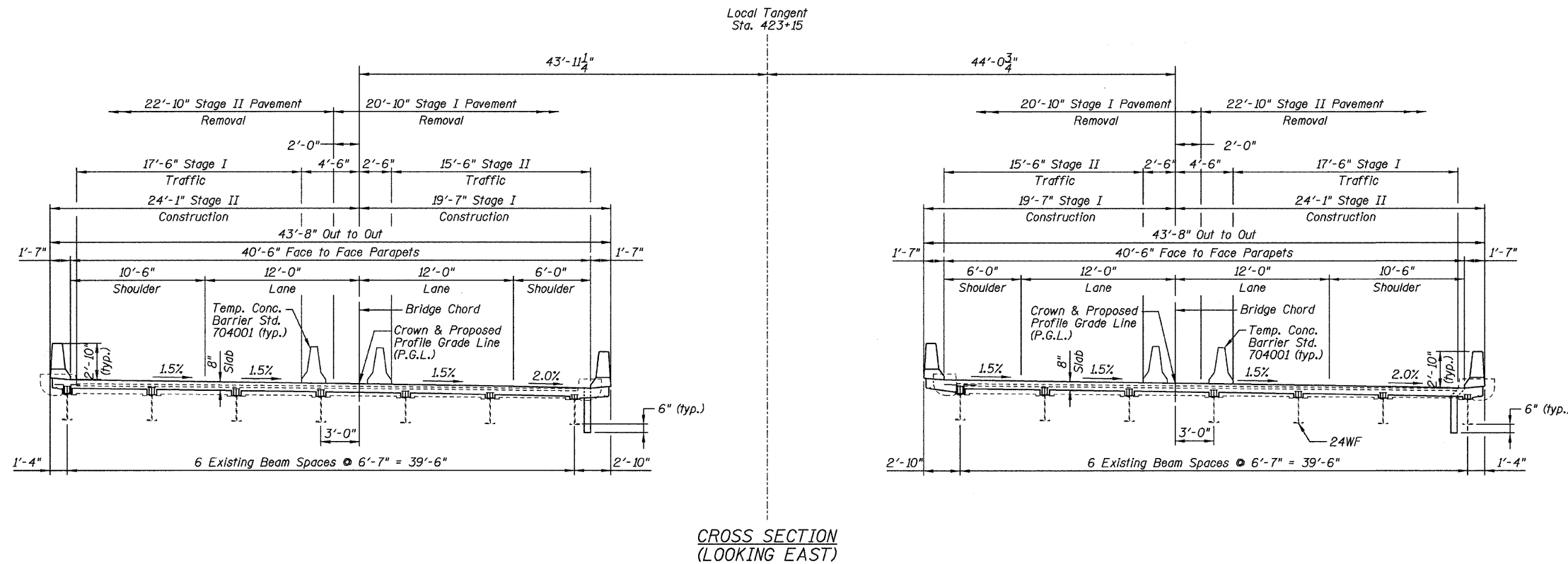


STATE OF ILLINOIS  
DEPARTMENT OF TRANSPORTATION

ROUTE NO.	SECTION	COUNTY	TOTAL SHEETS	SHEET NO.
F.A.I. 80	#	BUREAU	116	80
FED. ROAD DIST. NO. 7	ILLINOIS	FED. AID PROJECT-		

SHEET NO. 2  
29 SHEETS

Contract #66623  
\* (06-1, 2)RS-3, I



Index of Bridge Plans

1. General Plan
2. General Notes and Bill of Materials
- 3-5. Deck Elevations
- 6-9. Approach Pavement Elevations
- 10-11. Superstructure Plan and Section
12. Superstructure Details
13. Framing Details
14. Preformed Joint Strip Seal
15. Bearing Details
- 16-17. Abutment Details
18. Wingwall Details
19. Slope Wall Repair Plan
- 20-25. Foundation Repair Plans
26. Temporary Concrete Barrier
27. Bar Splicer Assembly Details
28. Cantilever Forming Brackets
29. Concrete Parapet Slipforming Option

GENERAL NOTES:

1. No field welding is permitted except as specified in the contract documents.
2. Reinforcement bars shall conform to the requirements of ASTM A 706 Gr 60 (IL Modified). See Special Provisions.
3. Reinforcement bars designated (E) shall be epoxy coated.
4. Prior to pouring the new concrete deck, all heavy or loose rust, loose mill scale, and other loose or potentially detrimental foreign material shall be removed from the surfaces in contact with concrete. Tightly adhered paint may remain unless otherwise noted. Removal shall be accomplished by methods that will not damage the steel and the cost will be included in the pay item covering removal of the existing concrete.  
  
As directed by the Engineer, existing construction accessories welded to the top flange of beams and girders shall be removed. The weld areas shall be ground flush and inspected for cracks using magnetic particle testing (MT) or dye penetrant testing (PT) by an individual acceptable to the Engineer. Any cracks that cannot be removed by grinding 1/4 inch deep shall be identified and reported to the Bureau of Bridges and Structures for further disposition. The cost of removing welded accessories, grinding and inspecting weld areas and grinding cracks will be paid for according to Article 109.04 of the Standard Specifications.
5. Plan dimensions and details relative to existing plans are subject to routine variations. The Contractor shall field verify existing dimensions and details affecting new construction and make necessary approved adjustments prior to construction or ordering of materials. Such variations shall not be cause for additional compensation for a change in scope of the work, however, the Contractor will be paid for the quantity actually furnished based upon the unit price bid for the work.
6. Cleaning and field painting of structural steel shall be done under a separate painting contract.
7. The existing structural steel coating contains lead. The Contractor shall take appropriate precautions to deal with the presence of lead on this project.
8. Layout of slope protection system may be varied in the field to suit ground conditions as directed by the Engineer.
9. If the Contractor elects to use cantilever forming brackets on the exterior beams or girders, the brackets shall be placed at the same locations as required for the hardwood blocks in Article 503.06(b) of the Standard Specifications. If additional cantilever forming brackets are required, hardwood blocking shall be wedged between the exterior and first interior beam at each of these additional bracket locations.
10. Clean and relocate existing name plate adjacent to new name plate. Cost included with name plate.
11. Partial depth saw cutting of existing concrete deck over the top of the existing beam flanges shall be permitted. See Special Provision for Removal of Existing Non-Composite Bridge Deck.
12. All new structural steel shall be shop painted with an inorganic zinc rich primer per AASHTO M300, Type 1.

DESIGNED	JKC
CHECKED	JLS
DRAWN	LAG/NOE
CHECKED	JKC

TOTAL BILL OF MATERIALS

DESCRIPTION	UNIT	SN 006-0009 (EB)		SN 006-0010 (WB)		TOTAL
		SUPER	SUB	SUPER	SUB	
STONE RIPRAP, CLASS A3	SQ. YD.	-	0	-	24	24
FILTER FABRIC	SQ. YD.	-	0	-	24	24
CONCRETE REMOVAL	CU. YD.	-	20	-	20	40
SLOPE WALL REMOVAL	SQ. YD.	-	9	-	16	25
REMOVAL OF EXISTING CONCRETE DECK NO. 2	EACH	1	-	1	-	2
STRUCTURE EXCAVATION	CU. YD.	-	115	-	116	231
FLOOR DRAINS	EACH	7	-	7	-	14
CONCRETE STRUCTURES	CU. YD.	-	32	-	32	64
CONCRETE SUPERSTRUCTURE	CU. YD.	154.8	-	154.9	-	309.5
BRIDGE DECK GROOVING	SQ. YD.	456.5	-	456.5	-	913
PROTECTIVE COAT	SQ. YD.	597.5	-	597.5	-	1195
FURNISHING AND ERECTING STRUCTURAL STEEL	POUND	2095	-	2095	-	4190
STUD SHEAR CONNECTORS	EACH	3178	-	3178	-	6356
JACK AND REMOVE EXISTING BEARINGS	EACH	14	-	14	-	28
REINFORCEMENT BARS, EPOXY COATED	POUND	31980	3600	31980	3600	71160
BAR SPLICERS	EACH	288	88	288	88	752
SLOPE WALL 4 INCH	SQ. YD.	-	9	-	16	25
NAME PLATES	EACH	1	-	1	-	2
PREFORMED JOINT STRIP SEAL	FOOT	85	-	85	-	170
ELASTOMERIC BEARING ASSEMBLY, TYPE I	EACH	14	-	14	-	28
ANCHOR BOLTS, 1"	EACH	28	-	28	-	56
EPOXY CRACK INJECTION	FOOT	-	68	-	65	133
STRUCTURAL REPAIR OF CONCRETE (DEPTH EQUAL TO OR LESS THAN 5 INCHES)	SQ. FT.	-	36	-	68.5	104.5

GENERAL NOTES AND BILL OF MATERIALS  
F.A.I. 80 (I-80) OVER DRAINAGE DITCH  
SECTION (06-1, 2)RS-3, I  
BUREAU COUNTY  
SN 006-0009 (EB)  
SN 006-0010 (WB)  
STA. 423+15

CHAMLIN  
ASSOCIATES  
PERU ILLINOIS MORRIS