

STATE OF ILLINOIS
DEPARTMENT OF TRANSPORTATION

ROUTE NO. F.A.I. 80	SECTION #	COUNTY BUREAU	TOTAL SHEETS 116	SHEET NO. 85
FED. ROAD DIST. NO. 7		ILLINOIS	FED. AID PROJECT	

SHEET NO. 7
29 SHEETS

Contract #66623
* (06-1, 2)RS-3, I

NORTH CURB LINE

Location	Station	Offset	Theoretical Grade Elevations
Bk. E. Abut.	423+69.62	25.93	643.48
A	423+79.65	25.88	643.49
B	423+89.67	25.82	643.50
End E. Appr. Pav't	423+99.69	25.75	643.51

NORTH EDGE OF PAVEMENT

Location	Station	Offset	Theoretical Grade Elevations
Bk. E. Abut.	423+69.65	31.93	643.39
A	423+79.68	31.88	643.40
B	423+89.71	31.82	643.41
End E. Appr. Pav't	423+99.74	31.75	643.42

STAGE CONSTRUCTION LINE

Location	Station	Offset	Theoretical Grade Elevations
Bk. E. Abut.	423+69.71	43.93	643.21
A	423+79.75	43.88	643.22
B	423+89.79	43.82	643.23
End E. Appr. Pav't	423+99.83	43.75	643.24

☉ ROADWAY & PG

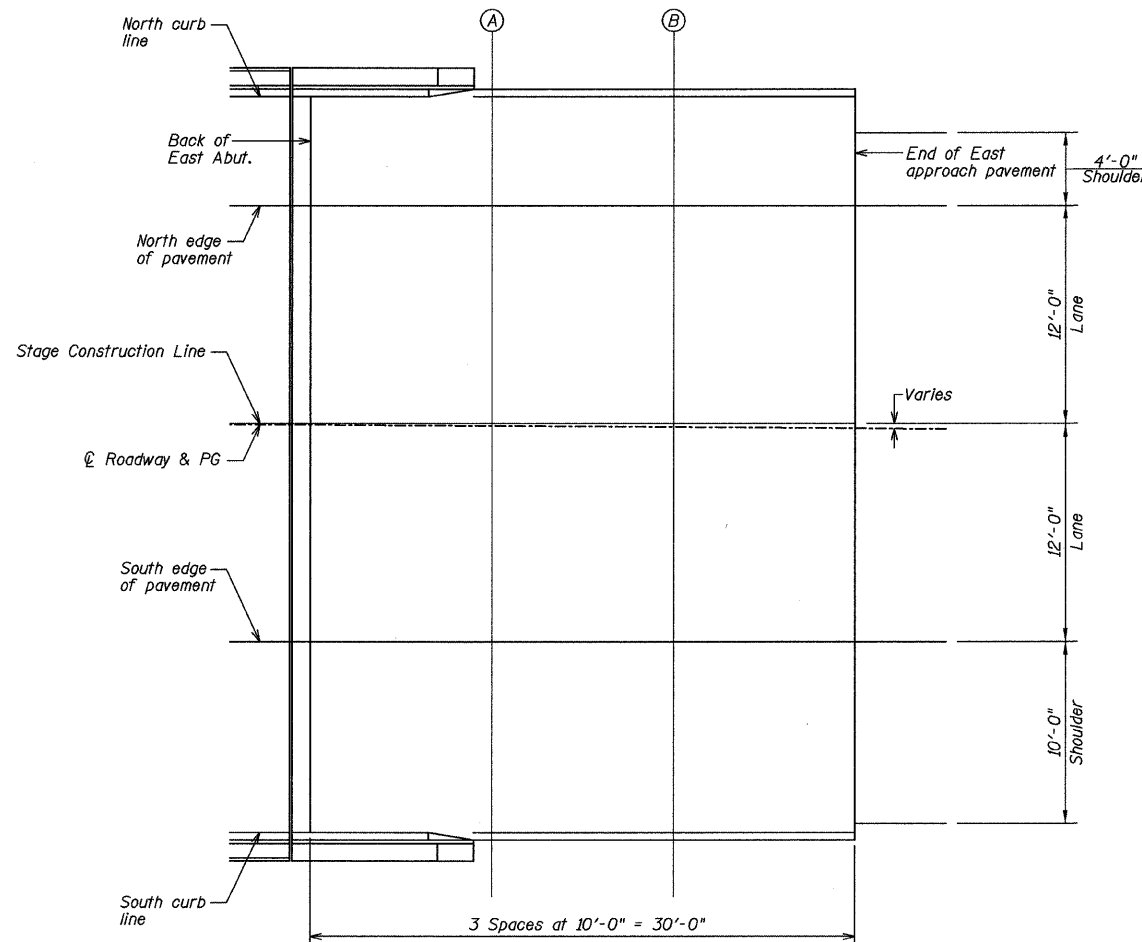
Location	Station	Offset	Theoretical Grade Elevations
Bk. E. Abut.	423+69.71	44.00	643.21
A	423+79.75	44.00	643.22
B	423+89.79	44.00	643.23
End E. Appr. Pav't	423+99.83	44.00	643.24

SOUTH EDGE OF PAVEMENT

Location	Station	Offset	Theoretical Grade Elevations
Bk. E. Abut.	423+69.77	55.93	643.03
A	423+79.82	55.88	643.04
B	423+89.87	55.82	643.05
End E. Appr. Pav't	423+99.91	55.75	643.06

SOUTH CURB LINE

Location	Station	Offset	Theoretical Grade Elevations
Bk. E. Abut.	423+69.82	66.43	642.82
A	423+79.88	66.38	642.83
B	423+89.93	66.32	642.84
End E. Appr. Pav't	423+99.99	66.25	642.85



PLAN

DESIGNED	NOE
CHECKED	NV
DRAWN	NOE
CHECKED	JKC

E-AS 5-16-08

TOP OF EAST APPROACH (EB)
SLAB ELEVATIONS
F.A.I. 80 (I-80) OVER DRAINAGE DITCH
SECTION (06-1, 2)RS-3, I
BUREAU COUNTY
SN 006-0009 (EB)
SN 006-0010 (WB)
STA. 423+15

CHAMLIN & ASSOCIATES
PERU ILLINOIS MORRIS