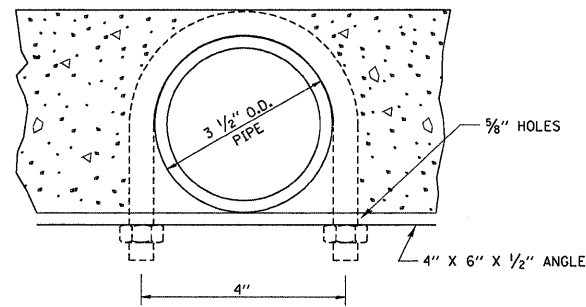
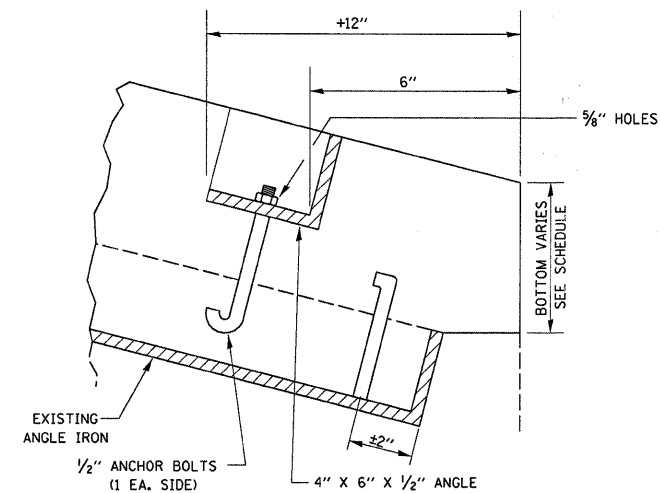


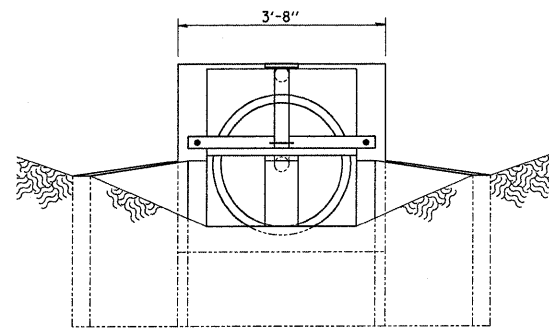
SECTION D-D



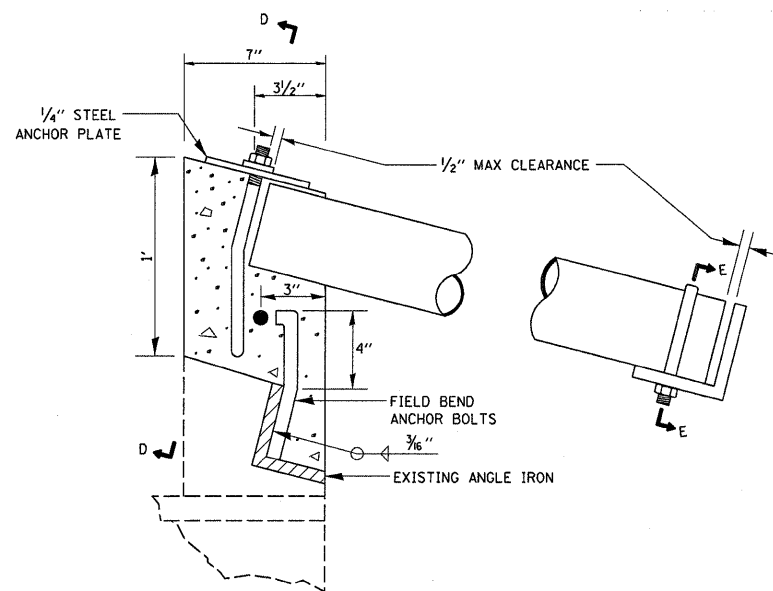
SECTION E-E



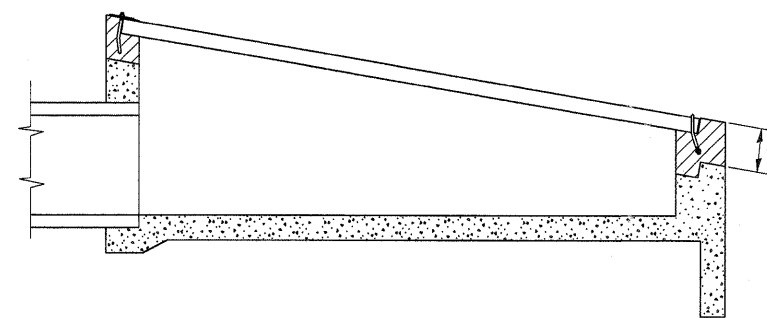
SECTION B-B



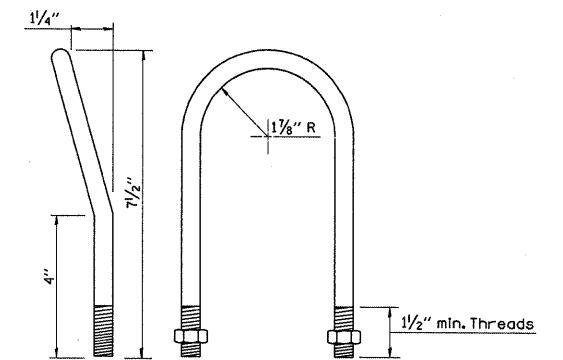
FRONT VIEW



DETAIL AT BLOCKOUTS



SECTION C-C



1/2" U BOLT
(1-required)

NOTES:

ALL DIMENSIONS ARE IN INCHES UNLESS OTHERWISE SHOWN
 ALL BOLTS SHALL BE TACK WELDED IN FINAL POSITION
 ALL BOLTS AND ANCHOR BOLTS SHALL BE IN ACCORDANCE WITH ARTICLE 1006.08 AND 1006.09
 STEEL PIPE SHALL BE IN ACCORDANCE WITH ARTICLE 1006.18

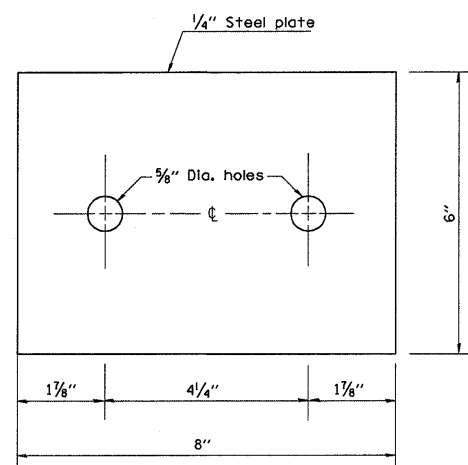
IT SHALL BE THE CONTRACTOR'S RESPONSIBILITY TO VERIFY DIMENSIONS IN THE FIELD AND MAKE NECESSARY APPROVED ADJUSTMENTS PRIOR TO CONSTRUCTION OR ORDERING MATERIALS

CLASS SI CONCRETE SHOULD BE USED THROUGHOUT
 SEE SPECIAL PROVISIONS FOR INLETS TO BE ADJUSTED, SPECIAL

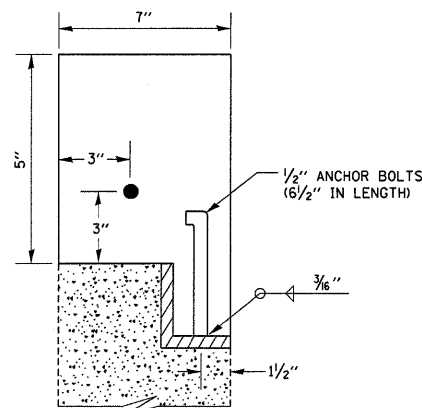
ALL MATERIALS SPECIFIED ARE INCLUDED IN THE COST OF INLETS TO BE ADJUSTED (SPECIAL)

EXISTING GRATE TO BE REMOVED BY CONTRACTOR AND WILL BECOME THE PROPERTY OF THE CONTRACTOR COST INCLUDED IN INLET TO BE ADJUSTED (SPECIAL)

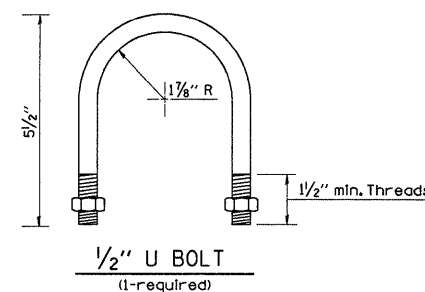
60260200 - INLETS TO BE ADJUSTED (SPECIAL)
 STA. 324+38 LT&RT



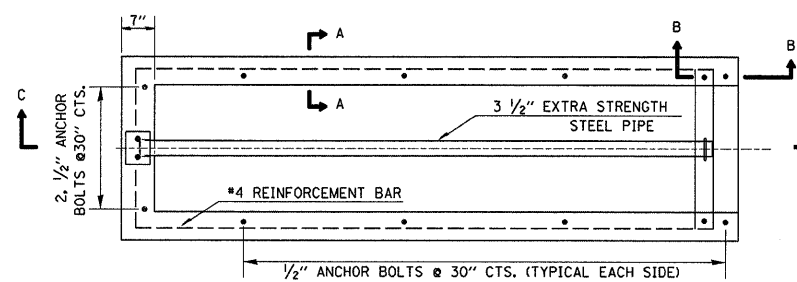
TOP ANCHOR PLATE
(1-required)



SECTION A-A
(TYPICAL)



1/2" U BOLT
(1-required)



PLAN VIEW

FILE NAME =	USER NAME = braboygo	DESIGNED -	REVISD -	STATE OF ILLINOIS DEPARTMENT OF TRANSPORTATION	DETAIL			F.A.I. RTE.	SECTION	COUNTY	TOTAL SHEETS	SHEET NO.
ct:\pw_work\pwwork\braboygo\dms32763\dets\ls.dgn		DRAWN -	REVISD -		SCALE: _____	SHEET NO. ____ OF ____ SHEETS	STA. _____ TO STA. _____	80	(06-1,2)RS-3, 1	BUREAU	116	115
		CHECKED -	REVISD -					CONTRACT NO. 66623				
		DATE -	REVISD -					FED. ROAD DIST. NO. [ILLINOIS] FED. AID PROJECT				