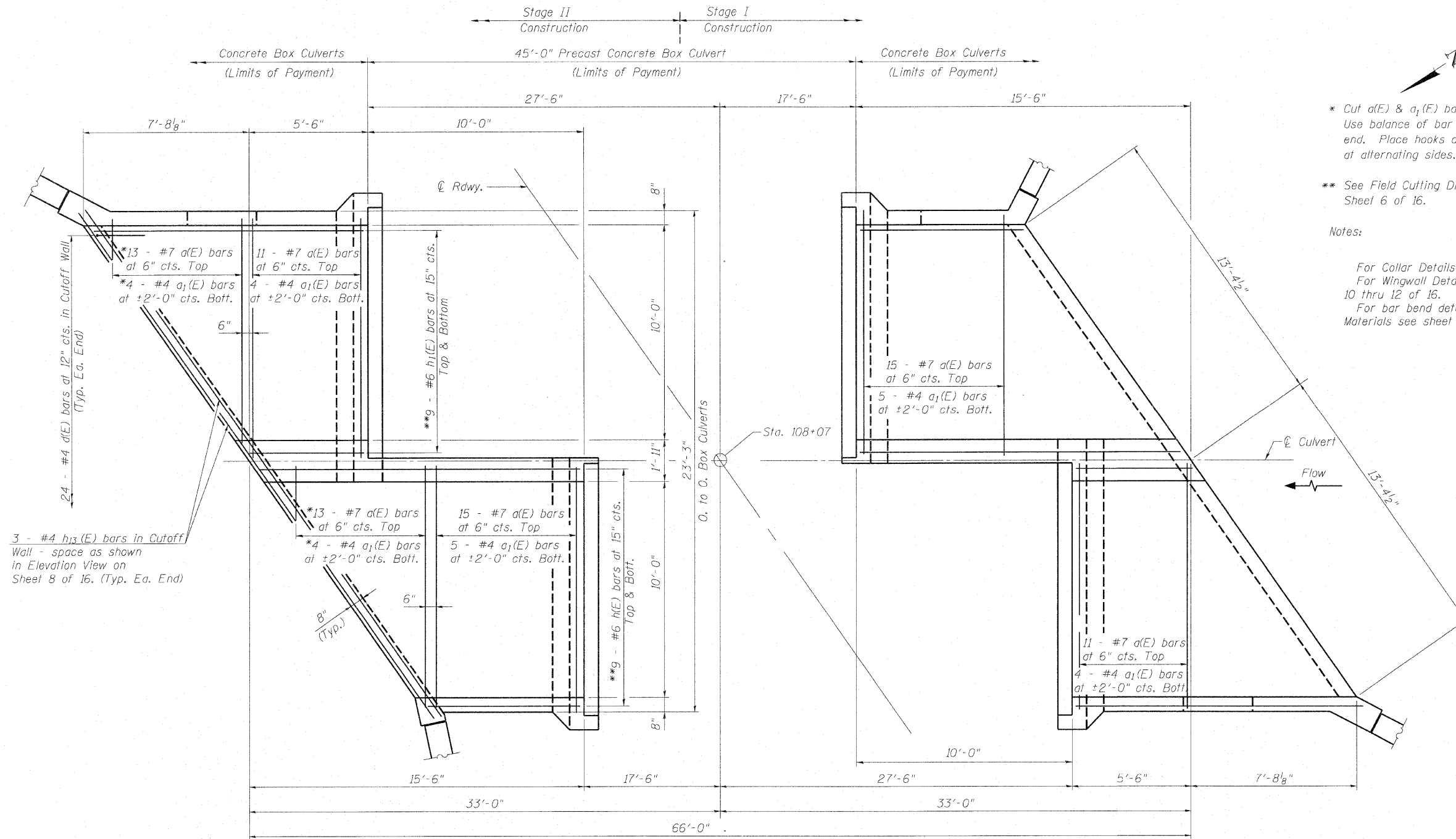


STATE OF ILLINOIS
DEPARTMENT OF TRANSPORTATION

ROUTE NO.	SECTION	COUNTY	TOTAL SHEETS	SHEET NO.
F.A.P. 607	I29BR	KENDALL	61	22
FED. ROAD DIST. NO.	ILLINOIS	FED. AID PROJECT		

SHEET NO. 7
16 SHEETS

Contract #66567



* Cut a(E) & a₁(E) bars to fit skew.
Use balance of bar in opposite
end. Place hooks of a(E) bars
at alternating sides.

** See Field Cutting Diagram on
Sheet 6 of 16.

Notes:

For Collar Details see Sheet 9 of 16.
For Wingwall Details see sheets
10 thru 12 of 16.
For bar bend details and Bill of
Materials see sheet 10 of 16.

PLAN BOTTOM SLAB

BOX CULVERT END SECTION BOTTOM SLAB DETAILS
U.S. RTE. 52 OVER WEST AUX SABLE CREEK
F.A.P. 607 - SECTION I29BR
KENDALL COUNTY
STATION 108+07
STRUCTURE NO. 047-2019

Operator: \$USERS\$

Date: 10/30/2007

Filename: \$FILES\$

DESIGNED	S.D.S.
CHECKED	C.W.C.
DRAWN	D.L.H.
CHECKED	S.D.S./C.W.C.

WHKS & CO.
ENGINEERS PLANNERS LAND SURVEYORS
MASON CITY, IOWA DUBUQUE, IOWA AMES, IOWA
E. DUBUQUE, ILLINOIS SPRINGFIELD, ILLINOIS ROCHESTER, MINNESOTA