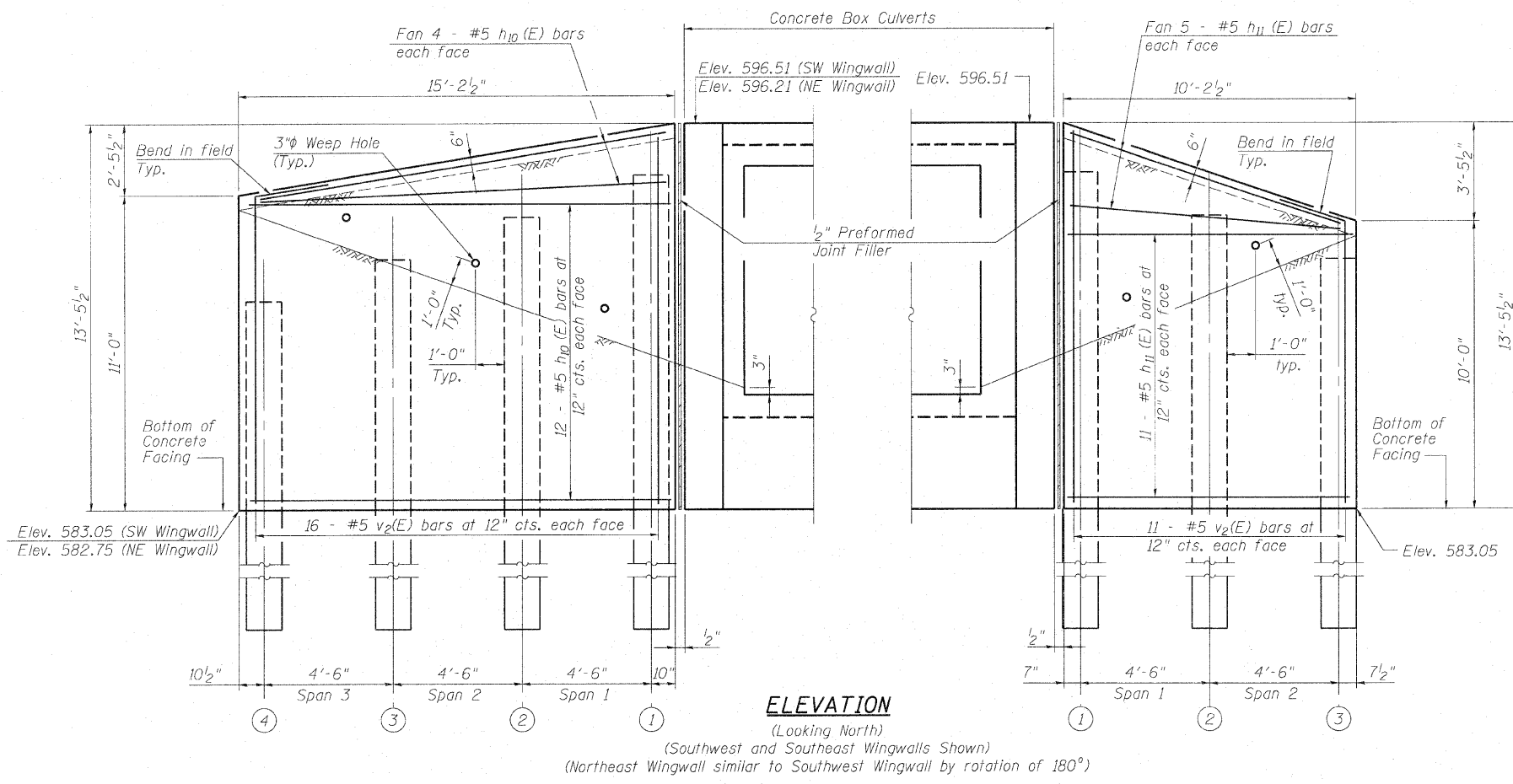


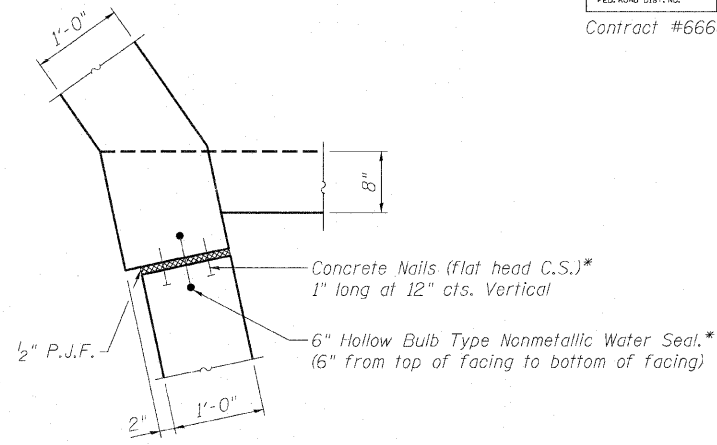
STATE OF ILLINOIS  
DEPARTMENT OF TRANSPORTATION

ROUTE NO.	SECTION	COUNTY	TOTAL SHEETS	SHEET NO.	SHEET NO. 10 16 SHEETS
F.A.P. 607	I29BR	KENDALL	61	25	
FED. ROAD DIST. NO.	ILLINOIS	FED. AID PROJECT			

Contract #66667



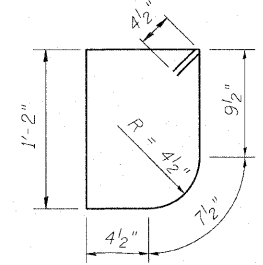
**ELEVATION**  
(Looking North)  
(Southwest and Southeast Wingwalls Shown)  
(Northeast Wingwall similar to Southwest Wingwall by rotation of 180°)



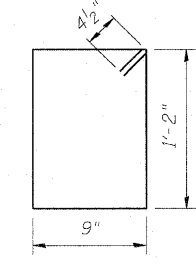
**CORNER DETAIL AT ALL WINGWALLS**  
\* Cost included with Concrete Structures.

**BILL OF MATERIAL**

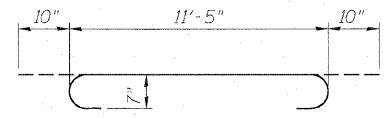
Bar	No.	Size	Length	Shape
a(E)	156	#7	13'-1"	U
a1(E)	26	#4	11'-2"	U
d(E)	48	#4	5'-6"	L
h(E)	33	#6	22'-4"	—
h1(E)	33	#6	18'-7"	—
h2(E)	16	#6	14'-2"	—
h3(E)	16	#6	5'-3"	—
h4(E)	16	#6	15'-3"	—
h5(E)	16	#6	7'-1"	—
h6(E)	16	#6	13'-4"	—
h7(E)	24	#4	13'-2"	—
h8(E)	12	#4	10'-9"	—
h9(E)	4	#4	2'-3"	—
h10(E)	64	#5	14'-11"	—
h11(E)	32	#5	9'-11"	—
h12(E)	32	#5	16'-9"	—
h13(E)	6	#4	28'-4"	—
s(E)	28	#4	4'-6"	□
s1(E)	28	#4	4'-7"	□
v(E)	116	#4	7'-9"	—
v1(E)	116	#4	3'-2"	—
v2(E)	124	#5	13'-2"	—
x(E)	132	#4	5'-1"	—
x1(E)	12	#4	4'-1"	—
Concrete Structures		Cu. Yd.	26.2	
Concrete Box Culverts		Cu. Yd.	64.8	
Reinforcement Bars, Epoxy Coated		Pound	13,400	



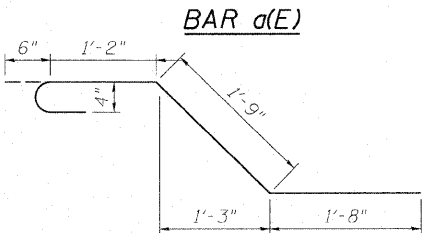
**BAR s(E)**  
(Upstream)



**BAR s1(E)**  
(Downstream)



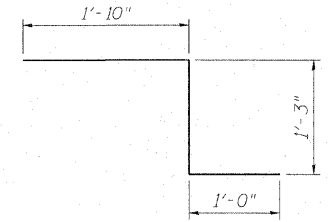
**BAR d(E)**



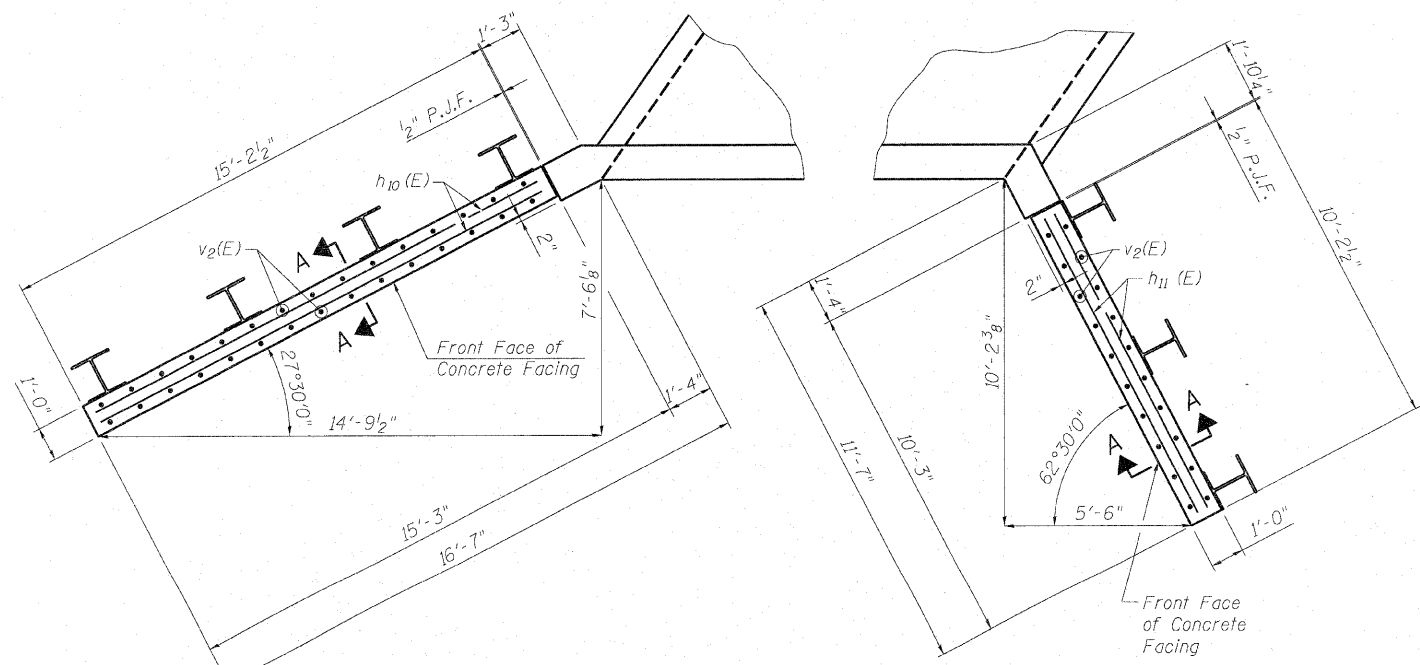
**BAR a(E)**



**BAR x(E)**



**BAR x1(E)**



**PLAN**

Notes:  
For Northwest Wingwall details see sheet 11 of 16.  
Concrete facing for soldier pile wingwalls is paid for as "Concrete Structures".  
The embankment material shall be placed against the rear face of the timber lagging prior to placement of the concrete facing.  
For Section A-A, see sheet 12 of 16.

**SOLDIER PILE WINGWALL PLAN & DETAILS**  
**U.S. RTE. 52 OVER WEST AUX SABLE CREEK**  
**F.A.P. 607 - SECTION I29BR**  
**KENDALL COUNTY**  
**STATION 108+07**  
**STRUCTURE NO. 047-2019**

Operator: \$USERS\$

Date: 10/30/2007

Filename: \$FILES\$

DESIGNED	S.D.S.
CHECKED	C.W.C.
DRAWN	D.L.H.
CHECKED	S.D.S./C.W.C.

**WHKS & CO.**  
ENGINEERS PLANNERS LAND SURVEYORS  
MASON CITY, IOWA DUBUQUE, IOWA AMES, IOWA  
E. DUBUQUE, ILLINOIS SPRINGFIELD, ILLINOIS ROCHESTER, MINNESOTA