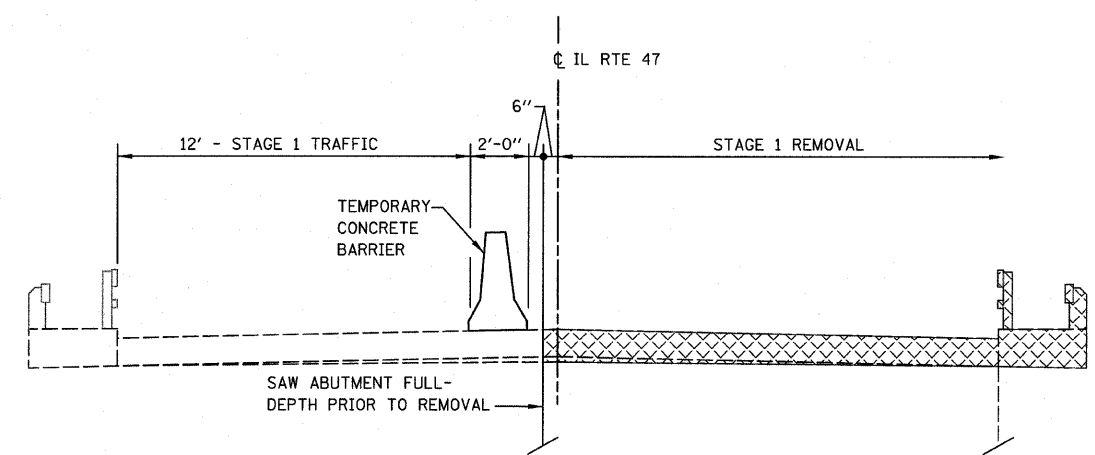
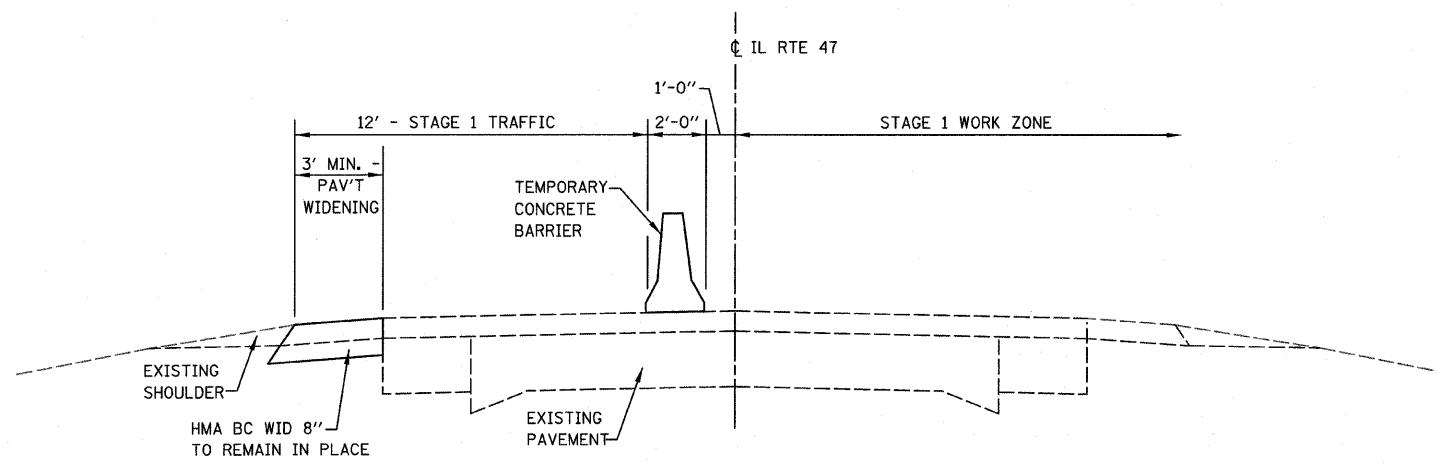


STAGE 1 CONSTRUCTION TYPICAL SECTION
(NORTH OF STRUCTURE, LOOKING NORTH)
STA. 583+42 TO STA. 587+24



STAGE 1 CONSTRUCTION TYPICAL SECTION
(LOOKING NORTH AT STRUCTURE)
STA. 581+91 TO STA. 583+42



STAGE 1 CONSTRUCTION TYPICAL SECTION
(SOUTH OF STRUCTURE, LOOKING NORTH)
STA. 578+00 TO STA. 581+91

STAGE CONSTRUCTION GENERAL NOTES

- ONE LANE OF TRAFFIC ON ILLINOIS ROUTE 47 SHALL BE MAINTAINED AT ALL TIMES.
- THE FURNISHING, PLACEMENT AND REMOVAL OF THE TYPE C BI-DIRECTIONAL REFLECTORS SHALL BE INCLUDED IN THE COST OF "TRAFFIC CONTROL AND PROTECTION, STANDARD 701321."
- EMERGENCY ACCESS SHALL BE PROVIDED AT ALL TIMES.
- PRIOR TO INSTALLATION OF TRAFFIC CONTROL AND PROTECTION, STANDARD 701321, A TEMPORARY SIGN STATING "DO NOT STOP ON TRACKS" SHOULD BE INSTALLED NORTH OF RAILROAD TRACK FOR THE SOUTHBOUND LANE.

SUGGESTED STAGE CONSTRUCTION

- SUGGESTED STAGE 1**
- PHASE 1
- UTILIZING TRAFFIC CONTROL AND PROTECTION, STANDARD 701326, CONSTRUCT THE HMA BASE COURSE WIDENING, 8" ON THE LT SIDE OF THE ROADWAY FROM STA. 578+00 TO STA. 581+78.
- PHASE 2
- UTILIZING TRAFFIC CONTROL AND PROTECTION, STANDARD 701006, CONSTRUCT TEMPORARY AGGREGATE ROAD CONNECTING THE PRIVATE ENTRANCE AT STA. 580+77 TO THE FIELD ENTRANCE AT STA. 579+44. OWNER WILL USE FIELD ENTRANCE FOR TEMPORARY ACCESS DURING STAGE 1 CONSTRUCTION. INSTALL TEMPORARY TRAFFIC SIGNALS PRIOR TO CLOSING RT HALF OF ROADWAY. ERECT TYPE 3 BARRICADES ACROSS THE ENTRANCE ON THE RT SIDE OF FAP ROUTE 326 AT STA. 580+77.
- PHASE 3
- UTILIZING TRAFFIC CONTROL AND PROTECTION, STANDARD 701321, DIRECT TRAFFIC ON THE LT LANE OF FAP ROUTE 326.
 - CONSTRUCT TEMPORARY SHEET PILING AT NORTH AND SOUTH SIDE OF EXISTING STRUCTURE.
 - REMOVE THE RT SIDE OF THE EXISTING STRUCTURE.
 - CONSTRUCT THE RT SIDE OF THE BRIDGE AND BRIDGE APPROACH PAVEMENT.
 - COMPLETE HMA SURFACE REMOVAL, 1/2" FOR THE RT LANE OF FAP ROUTE 326 FROM STA. 578+15 TO STA. 581+31 AND STA. 584+00 TO STA. 587+24.
 - CONSTRUCT B6.36 COMBINATION CONCRETE CURB & GUTTER ON THE RT SIDE FROM STA. 584+15 TO STA. 589+90.
 - CONSTRUCT THE PROPOSED HMA BINDER COURSE FOR THE RT LANE OF FAP ROUTE 326 FROM STA. 578+15 TO STA. 581+31 AND STA. 584+00 TO STA. 587+24.
 - CONSTRUCT THE HMA BASE COURSE WIDENING, 8" ON THE RT SIDE OF FAP ROUTE 326 FROM STA. 576+97 TO STA. 581+49 AND FROM STA. 584+16 TO STA. 587+94. PROVIDE TEMPORARY AGGREGATE RAMPS FOR RELOCATED PE AT STA. 579+44.
 - UTILIZING ENTRANCE DETAIL, CONSTRUCT PRIVATE ENTRANCE AT STA. 580+77.
 - INSTALL GUARD RAIL AND BITUMINOUS STABILIZATION ON RT SIDE OF FAP ROUTE 326.
 - INSTALL TEMPORARY PAVEMENT MARKING.
- SUGGESTED STAGE 2**
- UTILIZING TRAFFIC CONTROL AND PROTECTION, STANDARD 701321, DIRECT TRAFFIC ON THE RT LANE OF FAP ROUTE 326.
 - REMOVE THE TEMPORARY AGGREGATE ROAD CONNECTION THE PRIVATE ENTRANCE AT STA. 580+77 TO THE FIELD ENTRANCE AT STA. 579+44.
 - REMOVE THE LT SIDE OF THE EXISTING STRUCTURE.
 - CONSTRUCT THE LT SIDE OF THE BRIDGE AND BRIDGE APPROACH PAVEMENT.
 - COMPLETE HMA SURFACE REMOVAL, 1/2" FOR THE LT LANE OF FAP ROUTE 326 FROM STA. 578+80 TO STA. 581+31 AND STA. 584+00 TO STA. 586+61.
 - CONSTRUCT THE PROPOSED BINDER COURSE FOR THE LT LANE OF FAP ROUTE 326 STA. 578+80 TO STA. 581+31 AND STA. 584+00 TO STA. 586+61.
 - CONSTRUCT THE 1.5" HMA SHOULDER LIFT ON THE LT SIDE FROM STA. 578+00 TO STA. 581+31.
 - CONSTRUCT THE 3' HMA SHOULDER ON THE LT SIDE FROM STA. 578+00 TO STA. 581+31 AND FROM STA. 583+85 TO STA. 588+80.
 - CONSTRUCT THE B6.36 COMBINATION CONCRETE CURB & GUTTER ON THE LT SIDE FROM STA. 583+85 TO STA. 589+90.
 - INSTALL GUARD RAIL AND BITUMINOUS STABILIZATION ON THE LT SIDE OF FAP ROUTE 326.
- SUGGESTED STAGE 3**
- REMOVE 2 1/2" OF HMA BINDER COURSE ON THE RT SIDE FROM STA. 583+70 TO STA. 587+24.
 - UTILIZING TRAFFIC CONTROL AND PROTECTION, STANDARD 701306, CONSTRUCT THE PROPOSED HMA LEVELING BINDER & HMA SURFACE COURSE FOR THE LT AND RT LANES OF FAP ROUTE 326 FROM STA. 575+75 TO STA. 589+90.
 - CONSTRUCT THE 6' HMA SHOULDER ON THE LT SIDE FROM STA. 575+75 TO STA. 578+00.
 - CONSTRUCT THE 6' HMA SHOULDER ON THE RT SIDE FROM STA. 575+75 TO STA. 576+97.
 - CONSTRUCT THE HMA SHOULDER ON THE RT SIDE FROM STA. 576+97 TO STA. 577+83 (WIDTH VARIES 0' TO 3').
 - CONSTRUCT THE 1.5" HMA SHOULDER LIFT ON THE RT SIDE FROM STA. 576+97 TO STA. 581+48 AND FROM STA. 584+16 TO STA. 587+94.
 - UTILIZING TRAFFIC CONTROL AND PROTECTION, STANDARD 701326, REMOVE THE EXCESS WIDENING PAVEMENT ON THE RT SIDE OF FAP ROUTE 326 FROM STA. 577+83 TO STA. 580+58 TO A 6' WIDTH AND CONSTRUCT THE PROPOSED 2' AGGREGATE SHOULDERS.
 - UTILIZING TRAFFIC CONTROL AND PROTECTION, STANDARD 701326, CONSTRUCT THE PROPOSED AGGREGATE SHOULDER ON THE LT SIDE OF FAP ROUTE 326 FROM STA. 575+75 TO STA. 579+53 AND ON THE RT SIDE FROM STA. 575+75 TO STA. 576+97.

FILE NAME = sheets02.dgn	USER NAME = #USER#	DESIGNED -	REVISED -	STATE OF ILLINOIS DEPARTMENT OF TRANSPORTATION	STAGE 1 TYPICAL SECTIONS & STAGING NOTES				F.A.P. RTE.	SECTION	COUNTY	TOTAL SHEETS	SHEET NO.
	PLOT SCALE = 28,0000' / IN.	DRAWN -	REVISED -						326	119 BR	GRUNDY	68	9
	PLOT DATE = 8/13/2008	CHECKED -	REVISED -		SCALE: SHEET NO. OF SHEETS STA. TO STA.				CONTRACT NO. 66687				
		DATE -	REVISED -						FED. ROAD DIST. NO. ILLINOIS FED. AID PROJECT				