

STATE OF ILLINOIS  
DEPARTMENT OF TRANSPORTATION

ROUTE NO.	SECTION	COUNTY	TOTAL SHEETS	SHEET	SHEET NO.
FAP 326	119BR	GRUNDY	68	38	27 SHEETS
FED. ROAD DIST. NO. 7		ILLINOIS		FED. AID PROJECT	

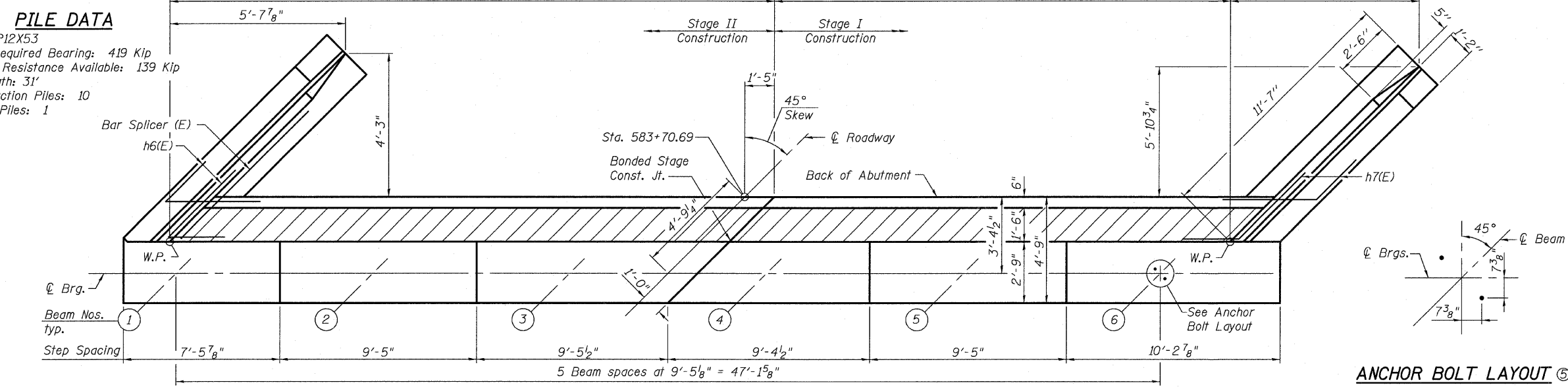
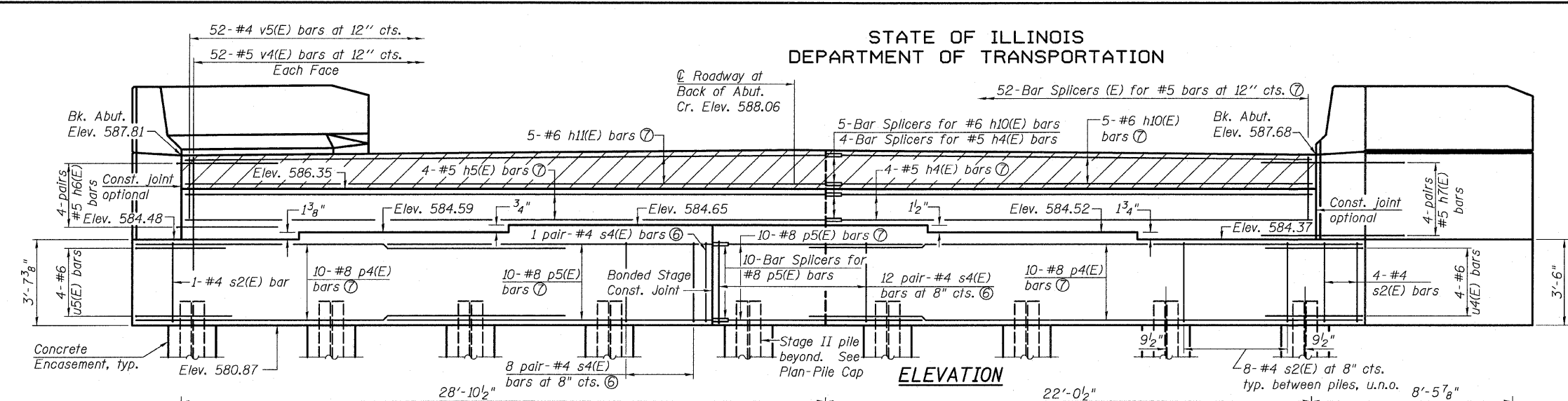
Contract #66687

**NORTH ABUTMENT  
BILL OF MATERIAL**

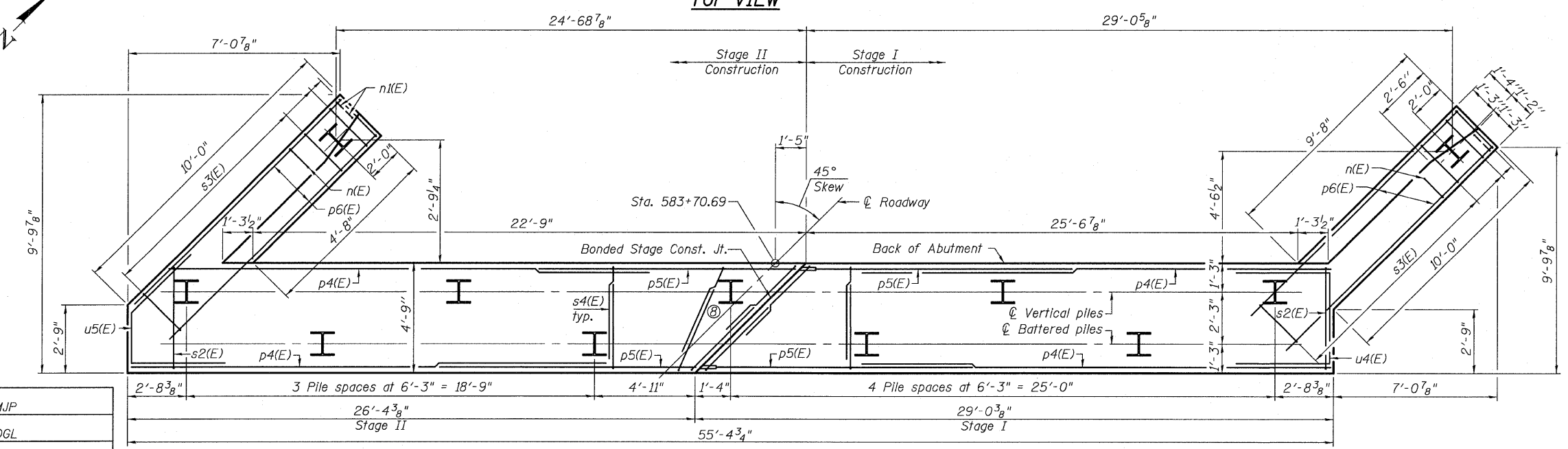
Bar	No.	Size	Length	Shape
h4(E)	4	#5	23'-8"	
h5(E)	4	#5	26'-6"	
h6(E)	8	#5	7'-4"	
h7(E)	8	#5	7'-4"	
h8(E)	8	#4	9'-10"	
h9(E)	8	#4	11'-1"	
h10(E)	5	#6	23'-0"	
h11(E)	5	#6	26'-6"	
h12(E)	8	#4	9'-6"	
h13(E)	8	#4	8'-3"	
n(E)	16	#6	11'-8"	
n1(E)	12	#6	5'-10"	
p4(E)	20	#8	23'-2"	
p5(E)	20	#8	12'-0"	
p6(E)	12	#7	11'-10"	
s2(E)	53	#4	15'-11"	
s3(E)	28	#4	9'-5"	
s4(E)	42	#4	11'-4"	
u4(E)	4	#6	11'-6"	
u5(E)	4	#6	9'-7"	
v4(E)	104	#5	4'-11"	
v5(E)	52	#4	3'-3"	
v6(E)	16	#6	5'-11"	
v7(E)	6	#6	5'-2"	
v8(E)	22	#6	5'-10"	
Structure Excavation		Cu. Yd.	149	
Concrete Structures		Cu. Yd.	50.4	
Concrete Encasement		Cu. Yd.	3.8	
Reinforcement Bars, Epoxy Coated		Pound	5,680	
Furnishing Steel Piles HP12x53		Foot	310	
Driving Piles HP12x53		Foot	310	
Test Pile Steel HP12x53		Each	1	
Pile Shoes		Each	11	
Concrete Sealer		Sq. Ft.	318	

**PILE DATA**

Type: HP12X53  
Nominal Required Bearing: 419 Kip  
Allowable Resistance Available: 139 Kip  
Est. Length: 31'  
No. Production Piles: 10  
No. Test Piles: 1



**ANCHOR BOLT LAYOUT**



- Notes:
- For details of Bar Splicers, see sheet 23 of 27.
  - For details of piles and Concrete Encasement, see sheet 22 of 27.
  - See sheet 19 of 27 for wingwall reinforcing locations and details.
  - All edges shall have standard 3/4" chamfer.
  - Space reinforcement in cap to miss anchor bolts.
  - Fan s4(E) bars as required. Lap length varies to accommodate skew. Minimum lap length is 1'-11".
  - See Sec. Thru Abut. on sheet 19 of 27 for bar locations.
  - Contractor shall drive during stage I if clearance allows or may move as approved by the Engineer.
  - Min. bar lap: #8 bars = 6'-4".

**NORTH ABUTMENT DETAILS  
IL 47 OVER JOHNNY RUN  
FAP ROUTE 326 - SECTION 119BR  
GRUNDY COUNTY  
STATION 582+65.75  
STRUCTURE NO. 032-0112**

DESIGNED	MJP
CHECKED	DGL
DRAWN	MJP
CHECKED	DGL

Eastport Business Center 1  
100 Lanter Court, Suite 1  
Collinsville, Illinois 62234  
618-345-2200  
Design Firm License No. 184.001115