

STATE OF ILLINOIS
DEPARTMENT OF TRANSPORTATION

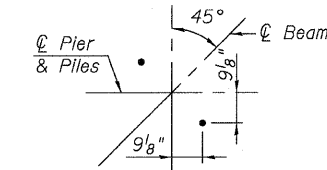
ROUTE NO.	SECTION	COUNTY	SHEET	SHEET
FAP 326	119BR	GRUNDY	68	40
FED. ROAD DIST. NO. 7	ILLINOIS	FED. AID PROJECT		

SHEET NO. 20
27 SHEETS

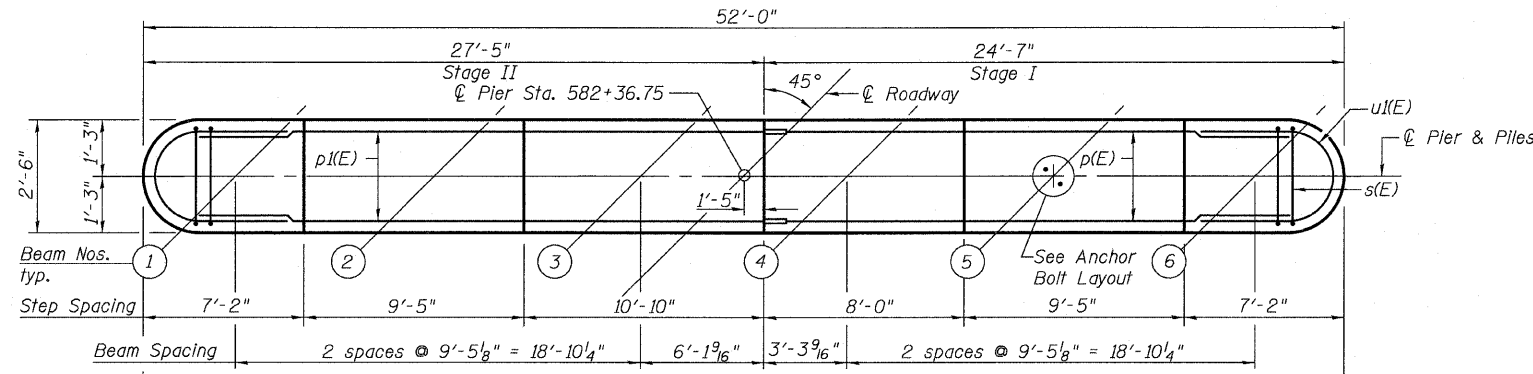
Contract #66687

BILL OF MATERIAL

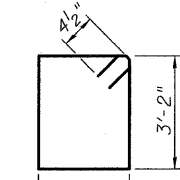
Bar	No.	Size	Length	Shape
h(E)	20	#5	23'-2"	—
h(I)	20	#5	26'-0"	—
p(E)	10	#7	23'-2"	—
p(I)	10	#7	26'-0"	—
s(E)	74	#4	11'-5"	□
u(E)	20	#5	8'-4"	U
u(I)	8	#6	9'-0"	U
v(E)	106	#5	10'-4"	—
Structure Excavation			Cu. Yd.	19
Concrete Structures			Cu. Yd.	53.5
Concrete Encasement			Cu. Yd.	2.8
Reinforcement Bars, Epoxy Coated			Pound	4,020
Furnishing Steel Piles HP12x53			Foot	287
Driving Piles			Foot	287
Test Pile HP12x53			Each	1
Pile Shoes			Each	8
Underwater Structure Excavation Protection, Location 1			Each	1



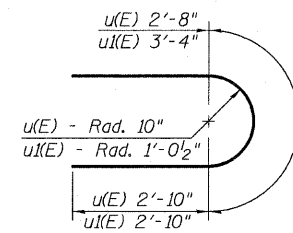
ANCHOR BOLT LAYOUT ⑤



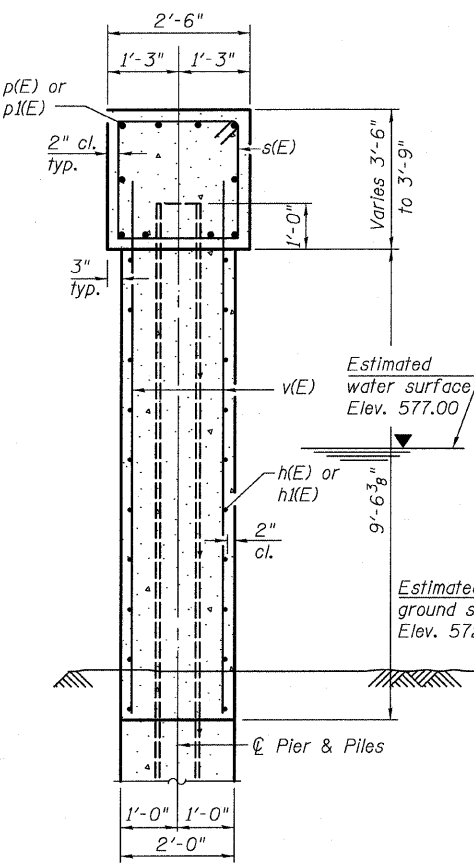
TOP PLAN



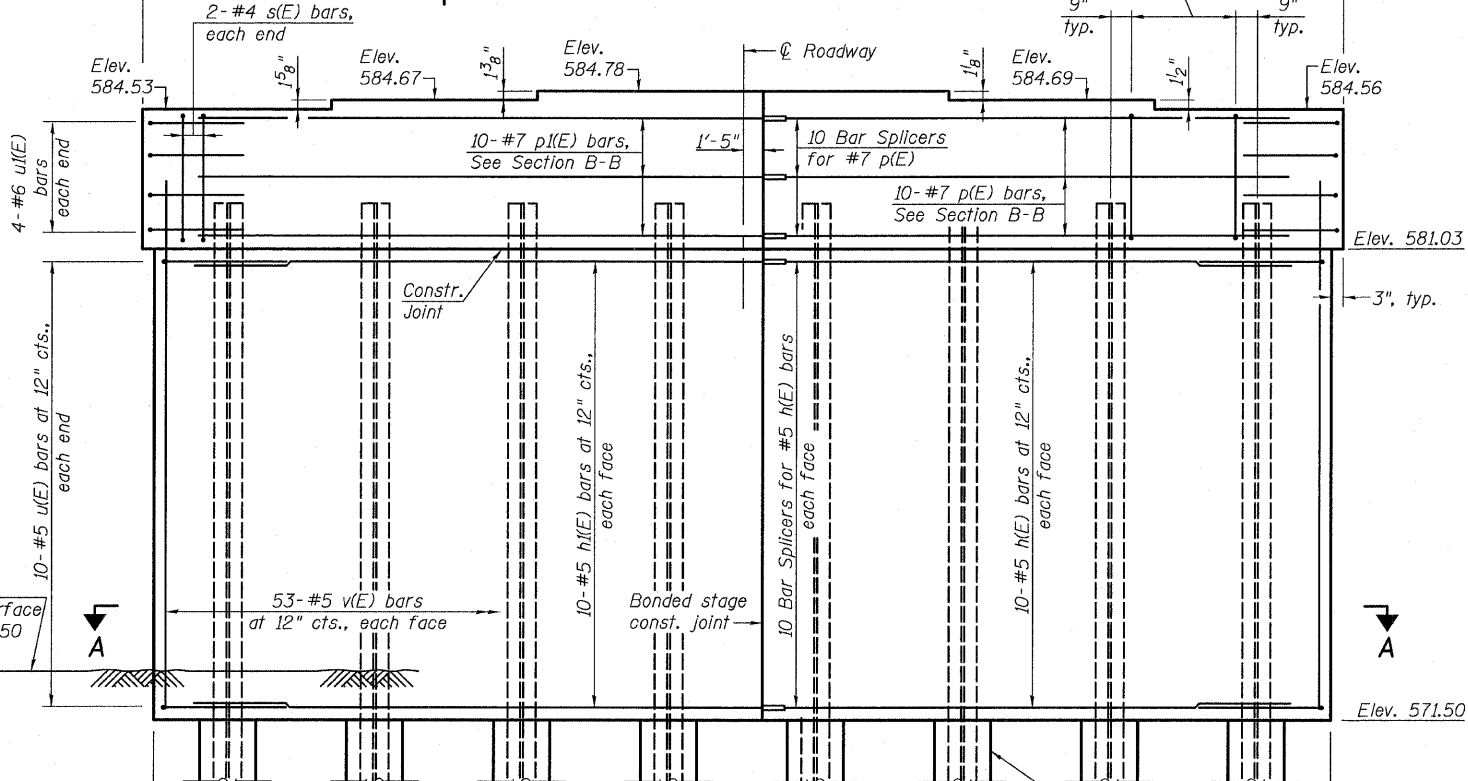
BAR s(E)



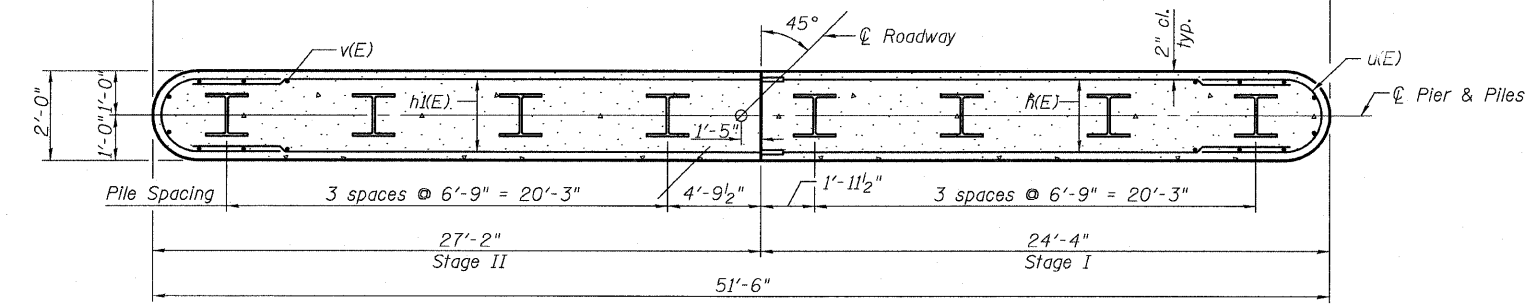
BARS u(E) & u(I)



SECTION B-B



ELEVATION
(Looking North)



SECTION A-A

- Notes:
- ① Pour steps monolithically with cap.
 - ② For details of Bar Splicers, see sheet 23 of 27.
 - ③ For details of piles and Concrete Encasement, see sheet 22 of 27.
 - ④ All edges shall have standard 3/4" chamfer.
 - ⑤ Space reinforcement in cap to miss anchor bolts.
 - ⑥ If a portion of the pier wall or concrete encasement is under water, reinforcement may be placed underwater into forms. Concrete shall be tremied according to Article 503.08 of the Standard Specifications to an elevation of 1'-0" above the water line at the time of construction.
 - ⑦ Exposed surface areas of the pier within 10'-0" of the outer edge of shoulder shall be treated with Concrete Sealer.

PILE DATA
Type: Steel HP12X53
Nominal Required Bearing: 419 Kips
Allowable Resistance Available: 139 Kips
Est. Length: 41'
No. Production Piles: 7
No. Test Piles: 1

DESIGNED	MJP
CHECKED	NEL
DRAWN	MJP
CHECKED	NEL

PIER 1 DETAILS
IL 47 OVER JOHNNY RUN CREEK
FAP ROUTE 326 - SECTION 119BR
GRUNDY COUNTY
STATION 582+65.75
STRUCTURE NO. 032-0112

Eastport Business Center 1
100 Lanter Court, Suite 1
Collinsville, Illinois 62234
618-345-2200
Design Firm License No. 184.001115