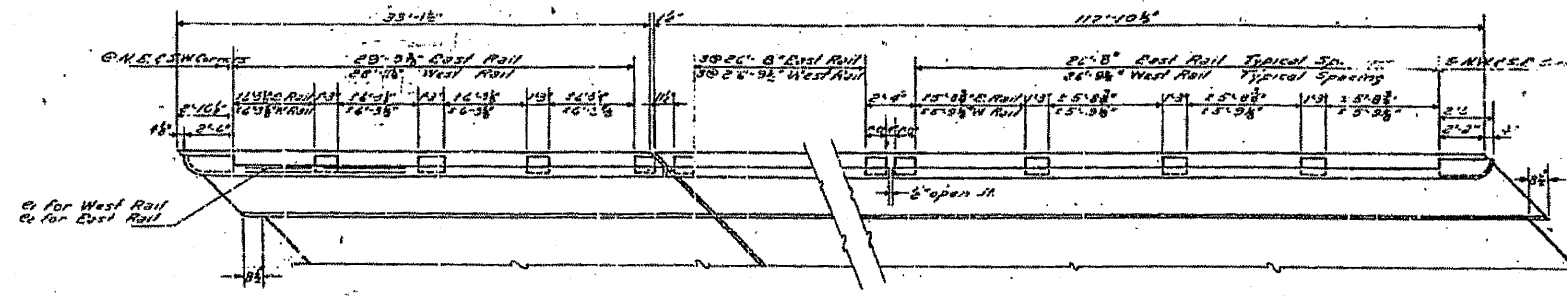
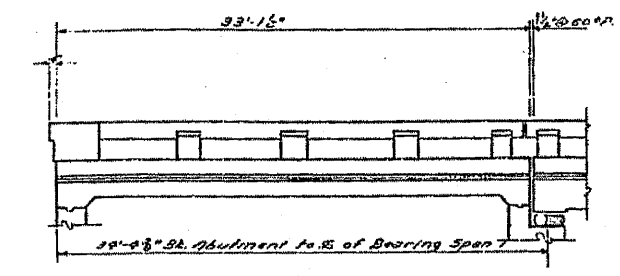


STATE OF ILLINOIS
DEPARTMENT OF PUBLIC WORKS & BUILDINGS
DIVISION OF HIGHWAYS

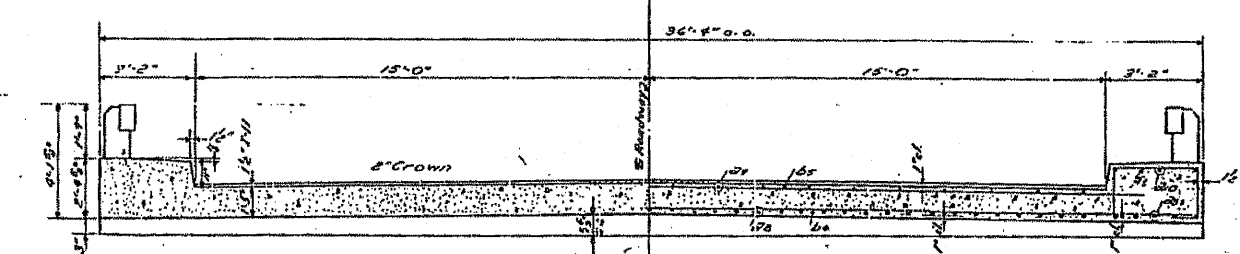
ROUTE NO.	SECTION	COUNTY	TOTAL SHEETS	SHEET NO.
119 BR	119 BR	GRUNDY	34	18
SHEET NO. 3				
7 SHEETS				



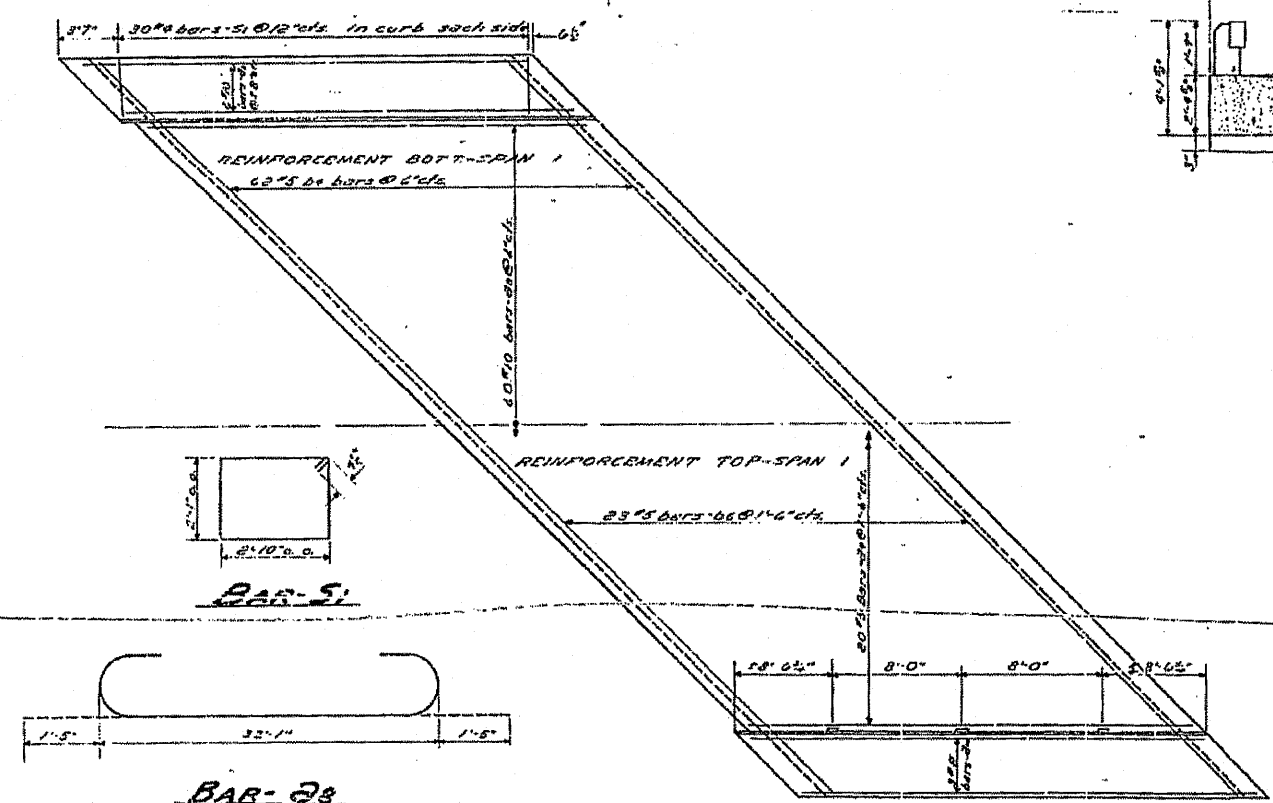
HANDRAIL & POST LAYOUT



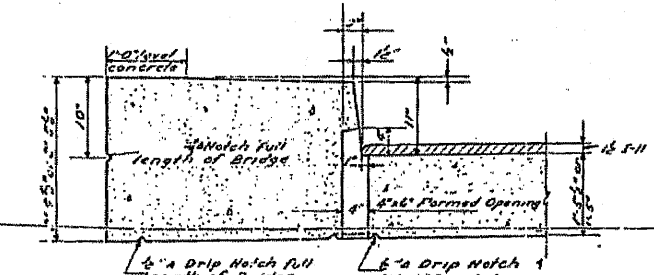
ELEV. SHOWING WEST HANDRAIL



TYPICAL CROSS SECTION



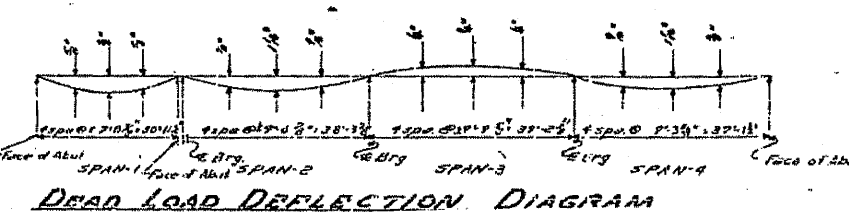
PLAN



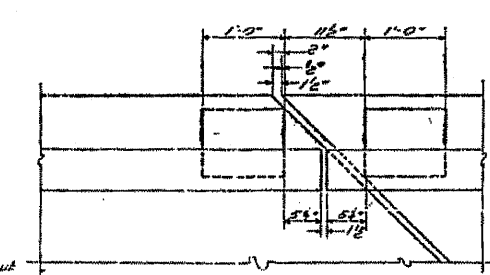
DRAIN DETAIL

BILL OF MATERIALS

BAR	NO.	SIZE	LENGTH	SHAPES
21	72	#10	34'-11"	
21	20	#5	32'-1"	
21a	16	#8	22'-1"	
22	62	#5	60'-4"	
22	23	#5	66'-4"	
d	82	#5	3'-3"	
e1	8	#5	30'-9"	
e2	4	#5	31'-6"	
f	20	#8	3'-4"	
g	10	#8	10'-2"	
Handrail Concrete Co. 12				
Class X Concrete Co. 217				
Reinforcement Bars 162 14,170				



DEAD LOAD DEFLECTION DIAGRAM



LAYOUT OF POSTS @ ELEV. T-

APPROACH SPAN
PROJ. F-209 (5)
S.B.I. RT. 97 SEC. 119-BY
GRUNDY COUNTY

DESIGNED: David J. Bellon
CHECKED: P.J. Johnson
DRAWN: D.S.S. R. Grossch
CHECKED: P.J. Johnson
EXAMINED: W.G. Howard
PASSED: [Signature]
APPROVED: [Signature]
DATE: Feb 17, 1954