

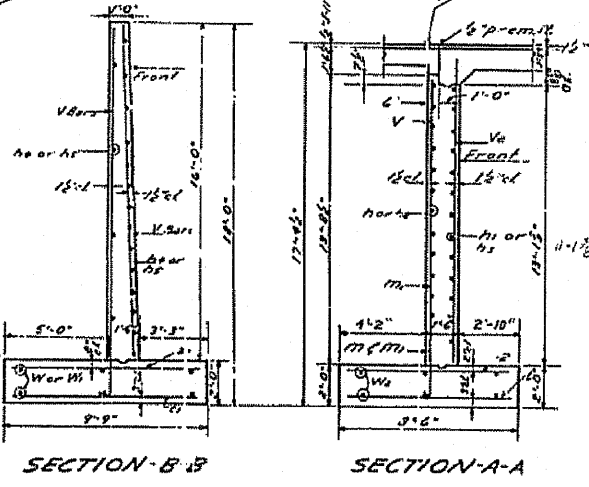
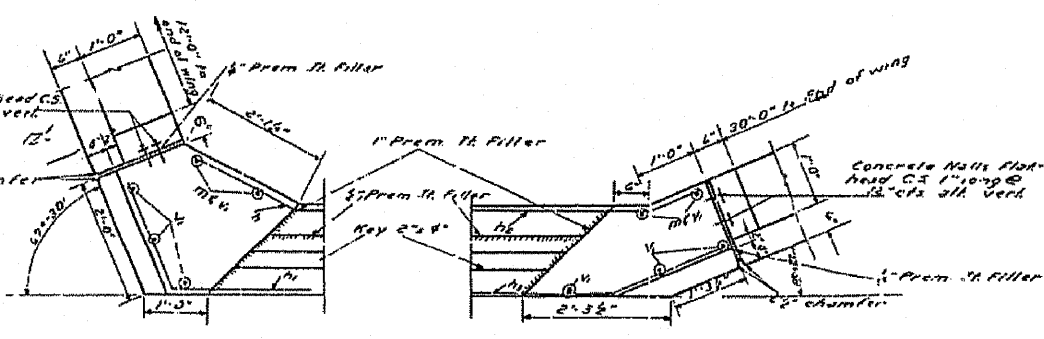
BAR	A	B	C
1	1'-2"	25'-0"	25'-0"
2	1'-8"	26'-7"	27'-30"
3	9"	28'-0"	22'-30"
4	1'-9"	27'-0"	22'-30"

BAR	A	B
M	3'-3"	8"
M1	7'-6"	7"
M2	3'-4"	1'-1"
M3	4'-9"	2"

BILL OF MATERIALS

BAR	NO	SIZE	LENGTH	SHAPE
A	14	#4	26'-9"	U
A1	14	#6	28'-6"	U
A2	14	#6	28'-9"	U
A3	14	#6	29'-3"	U
A4	17	#4	18'-0"	U
A5	34	#4	15'-6"	U
M	56	#6	3'-11"	C
M1	52	#5	8'-2"	C
M2	43	#8	4'-2"	C
M3	41	#5	8'-8"	C
E	64	#4	8'-0"	U
E1	51	#5	3'-1"	U
V	52	#4	13'-3"	U
V1	10	#8	13'-8"	U
V2	68	#5	11'-6"	U
V3	42	#6	2'-3"	U
V4	13	#4	13'-6"	U
V5	7	#4	12'-6"	U
V6	11	#4	11'-6"	U
V7	7	#4	10'-6"	U
V8	8	#4	1'-6"	U
V9	5	#4	8'-6"	U
W	12	#4	16'-6"	U
W1	4	#4	15'-6"	U
W2	12	#4	11'-6"	U
Z	70	#4	8'-0"	U
Z1	55	#4	8'-3"	U

Class 2 Concrete Cu Yds. 1397
Reinforcement Bars Lbs. 8000
Class A Estimation Cu Yds. 345
Class B Estimation Cu Yds. 270



DESIGNED *Erwin J. Sullivan*
CHECKED *R.H. Tolson*
DRAWN BY *E. Scaesch*
CHECKED *R.H. Tolson*

EXAMINED *W.E. Hanson*
PASSED *[Signature]*
APPROVED *R.H. Tolson*

Feb 17 1954

NORTH ABUTMENT
PROJ. F-204 (5)
S.B.I. RT. 47 SEC. 119-BY
GRUNDY COUNTY
STA. 385+20