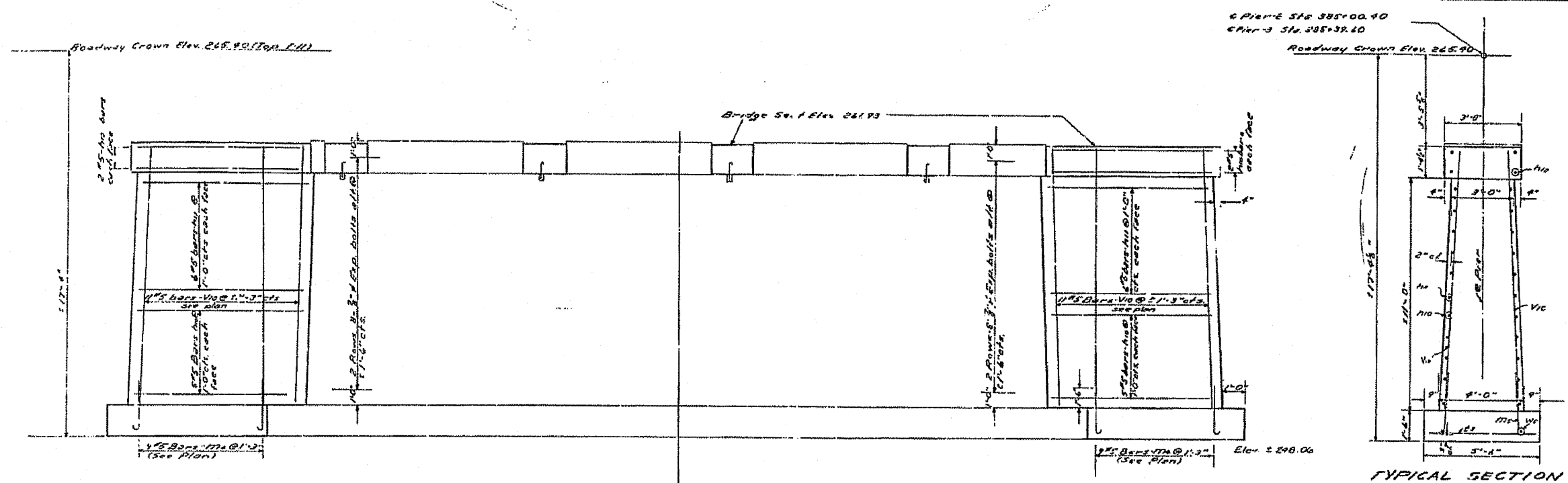
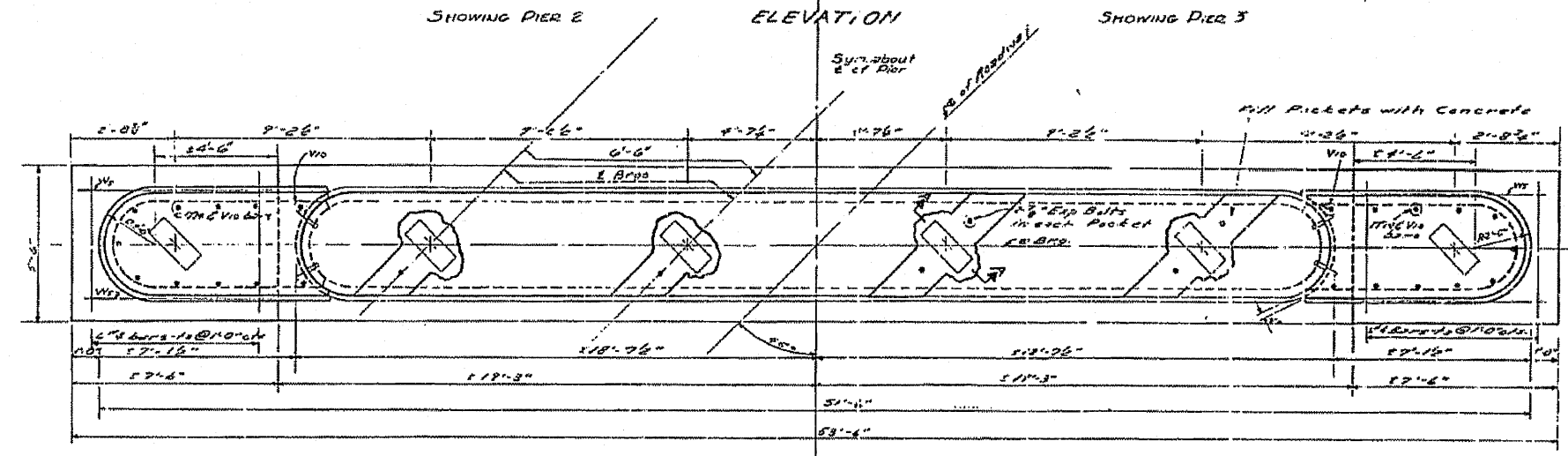


STATE OF ILLINOIS
DEPARTMENT OF PUBLIC WORKS & BUILDINGS
DIVISION OF HIGHWAYS

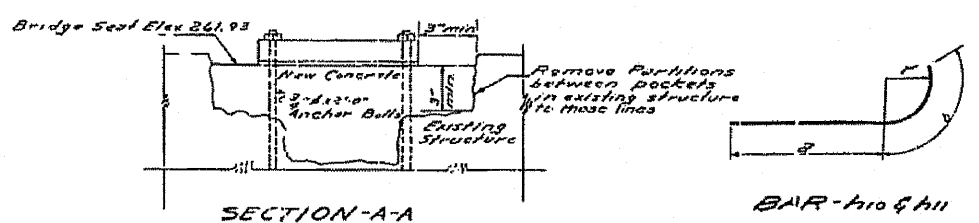
| | | | | | |
|--|---------|--------|--------------|-----------|-----------|
| ROUTE NO. | SECTION | COUNTY | TOTAL SHEETS | SHEET NO. | SHEET NO. |
| 47 | 119 | Grundy | 34 | 21 | 7 SHEETS |
| FED. ROAD DIST. NO. 7 ILLINOIS FED. AID PROJECT F-204(5) | | | | | |



TYPICAL SECTION



SHOWING PIER 3 PLAN SHOWING PIER 2



SECTION-A-A

BILL OF MATERIALS - 2 PIERS

| BAR | NO. | SIZE | LENGTH | SHAPE |
|-------------------------------------|-----|------|--------|-------|
| A12 | 56 | 25 | 8'-3" | U |
| A14 | 68 | 25 | 7'-10" | U |
| M16 | 26 | 25 | 3'-6" | U |
| E1 | 24 | 24 | 5'-0" | U |
| V10 | 18 | 25 | 12'-0" | U |
| V12 | 8 | 24 | 7'-0" | U |
| Reinforcement Bars Lbs. 4470 | | | | |
| Class X Concrete Cu Yds 558 | | | | |
| Class A Excess for Struct Cu Yds 76 | | | | |
| Class B Excess for Struct Cu Yds 90 | | | | |
| Concrete Removal Cu Yds 0.9 | | | | |
| Expansion Bolts Each 76 | | | | |

DESIGNED *L. J. Sullivan*
 EXAMINED *W. E. Hansen*
 CHECKED *R. H. Johnson*
 PASSED *[Signature]*
 DRAWN *D. S. S. Groeschel*
 APPROVED *R. H. Johnson*
 CHECKED *R. H. Johnson*

Feb 17 1954

PIERS 263
 PROJ F-204-(5)
 S.B.I. RT. 47 SEC. 119-BY
 GRUNDY CO.
 STA 385+20