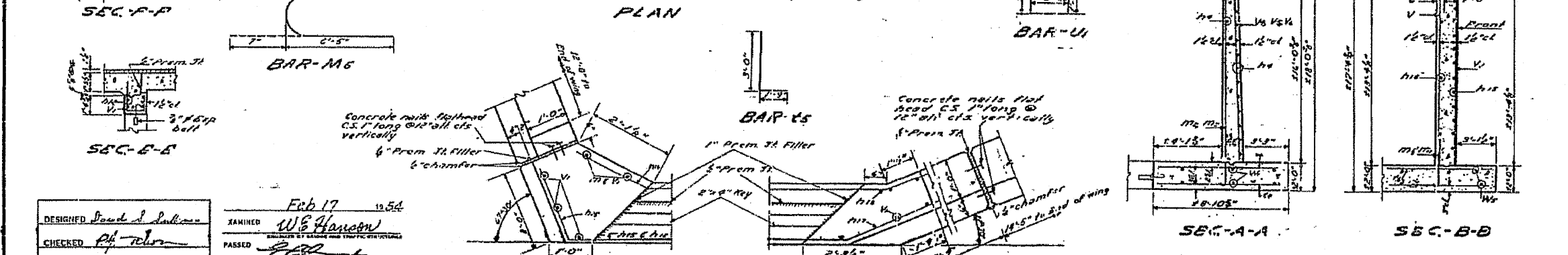
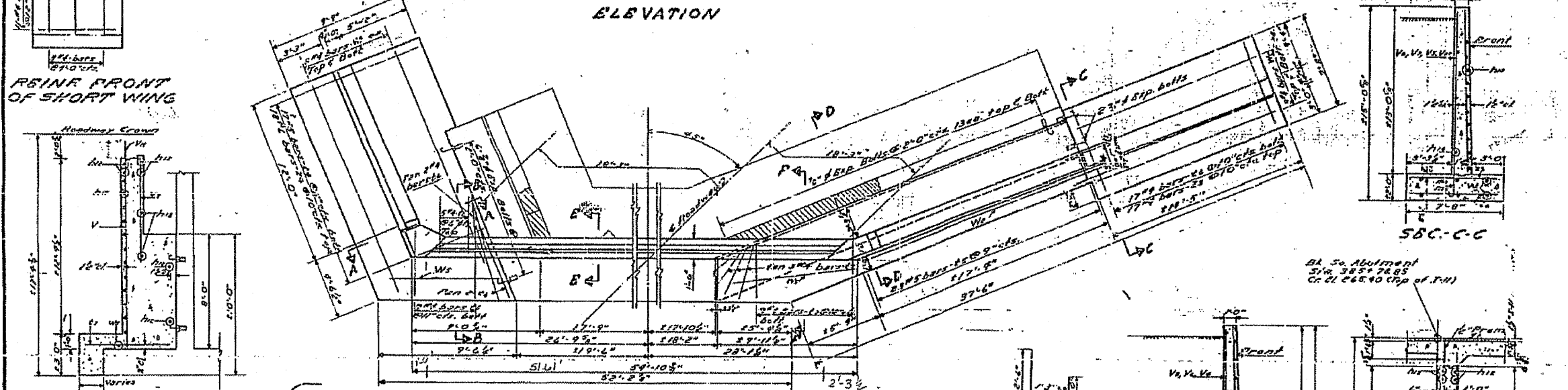
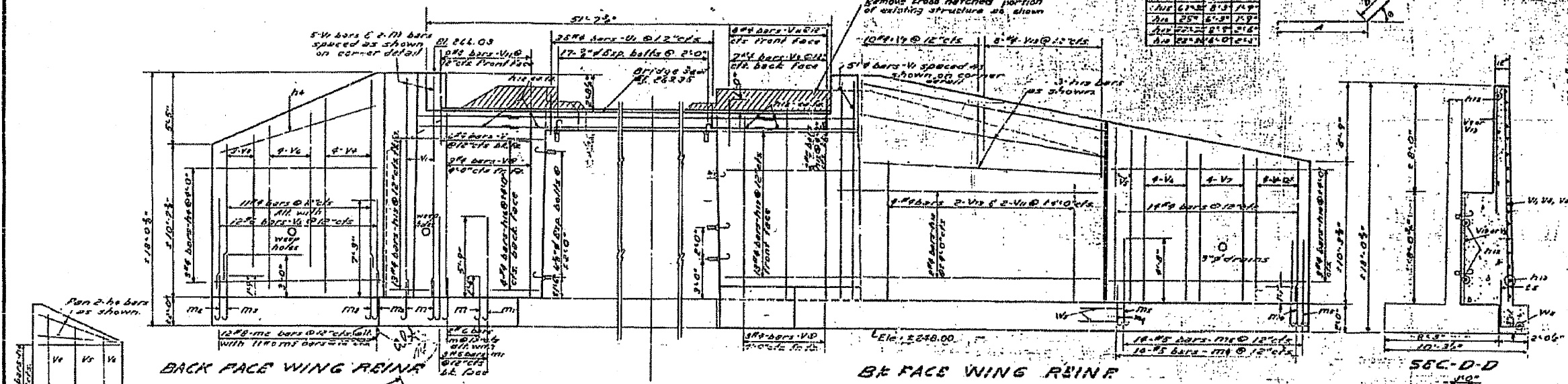


STATE OF ILLINOIS
DEPARTMENT OF PUBLIC WORKS & BUILDINGS
DIVISION OF HIGHWAYS

PROJECT NO.	BY	DATE	SHEET	SHEET NO.
34	Grundy	34	22	7 SHEETS



BILL OF MATERIAL

BAR NO	SIZE	LENGTH	SHAPE
10	#4	12'-0"	
11	#4	20'-0"	
12	#4	17'-0"	
13	#4	11'-0"	
14	#4	10'-0"	
15	#4	8'-0"	
16	#4	11'-0"	
17	#4	11'-0"	
18	#4	8'-0"	
19	#4	8'-0"	
20	#4	8'-0"	
21	#4	8'-0"	
22	#4	8'-0"	
23	#4	8'-0"	
24	#4	8'-0"	
25	#4	8'-0"	
26	#4	8'-0"	
27	#4	8'-0"	
28	#4	8'-0"	
29	#4	8'-0"	
30	#4	8'-0"	
31	#4	8'-0"	
32	#4	8'-0"	
33	#4	8'-0"	
34	#4	8'-0"	
35	#4	8'-0"	
36	#4	8'-0"	
37	#4	8'-0"	
38	#4	8'-0"	
39	#4	8'-0"	
40	#4	8'-0"	
41	#4	8'-0"	
42	#4	8'-0"	
43	#4	8'-0"	
44	#4	8'-0"	
45	#4	8'-0"	
46	#4	8'-0"	
47	#4	8'-0"	
48	#4	8'-0"	
49	#4	8'-0"	
50	#4	8'-0"	
51	#4	8'-0"	
52	#4	8'-0"	
53	#4	8'-0"	
54	#4	8'-0"	
55	#4	8'-0"	
56	#4	8'-0"	
57	#4	8'-0"	
58	#4	8'-0"	
59	#4	8'-0"	
60	#4	8'-0"	
61	#4	8'-0"	
62	#4	8'-0"	
63	#4	8'-0"	
64	#4	8'-0"	
65	#4	8'-0"	
66	#4	8'-0"	
67	#4	8'-0"	
68	#4	8'-0"	
69	#4	8'-0"	
70	#4	8'-0"	
71	#4	8'-0"	
72	#4	8'-0"	
73	#4	8'-0"	
74	#4	8'-0"	
75	#4	8'-0"	
76	#4	8'-0"	
77	#4	8'-0"	
78	#4	8'-0"	
79	#4	8'-0"	
80	#4	8'-0"	
81	#4	8'-0"	
82	#4	8'-0"	
83	#4	8'-0"	
84	#4	8'-0"	
85	#4	8'-0"	
86	#4	8'-0"	
87	#4	8'-0"	
88	#4	8'-0"	
89	#4	8'-0"	
90	#4	8'-0"	
91	#4	8'-0"	
92	#4	8'-0"	
93	#4	8'-0"	
94	#4	8'-0"	
95	#4	8'-0"	
96	#4	8'-0"	
97	#4	8'-0"	
98	#4	8'-0"	
99	#4	8'-0"	
100	#4	8'-0"	

DESIGNED: J. J. Sullivan
CHECKED: P. J. Tolson
DRAWN: A. S. S. C. G. G. G.
CHECKED: P. J. Tolson

EXAMINED: W. E. Hanson
PASSED: [Signature]
APPROVED: [Signature]

Feb 17 1934

SOUTH ABUTMENT
PROJ F-204(5)
SBI RT 47 SEC-119-BY
GRUNDY CO.
STA. 385+20