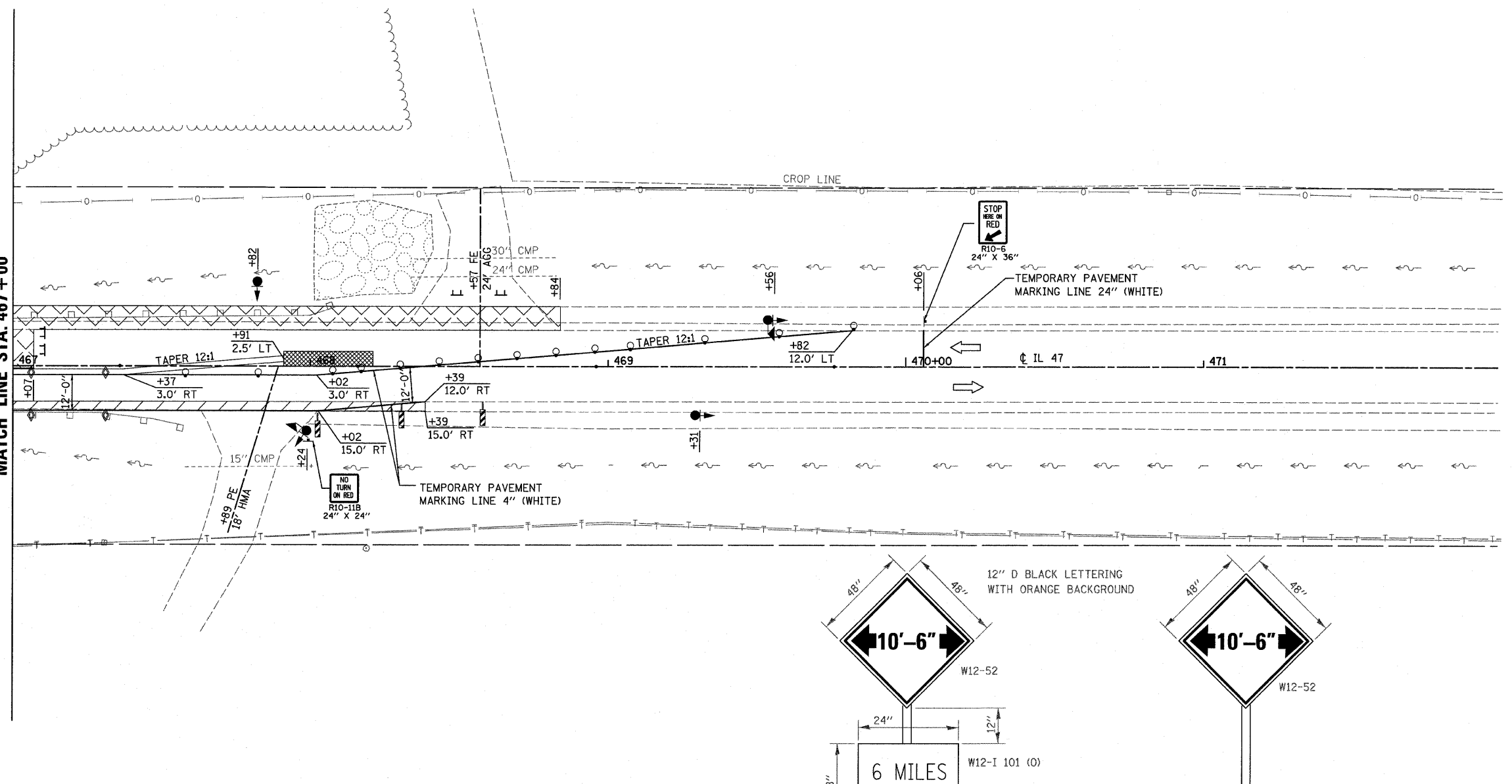


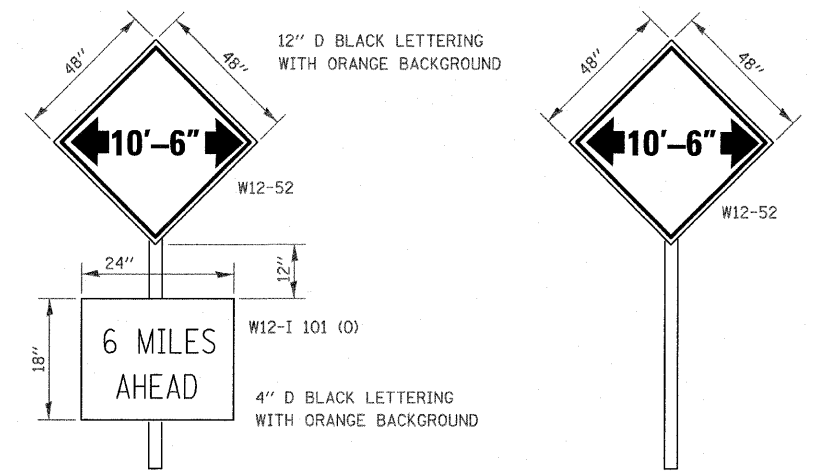
MATCH LINE STA. 467+00



NOTES:
 1. SIGNING AND BARRICADES OUTSIDE OF THE LIMITS OF THE STOP BARS SHALL BE IN ACCORDANCE WITH STANDARD 701321.

LEGEND

- TRAFFIC SIGNALS
- TRAFFIC SIGNALS WITH MICROWAVE DETECTORS
- DRUM WITH STEADY BURNING LIGHT
- STOP LINE 24"
- IMPACT ATTENUATORS, TEMPORARY (FULLY-REDIRECTIVE, NARROW) TEST LEVEL 3
- DOUBLE VERTICAL PANEL
- TYPE C BI-DIRECTIONAL REFLECTOR
- TEMPORARY SHEET PILE
- TYPE III BARRICADE WITH FLASHING LIGHTS
- STEADY BURNING LIGHTS AND DOUBLE VERTICAL PANELS
- WORK AREA
- SIGN
- HMA BASE COURSE WIDENING, 8"
- DIRECTION OF TRAFFIC



AT JUNCTION OF I-55 AND IL 47
 AT JUNCTION OF IL 113 AND IL 47

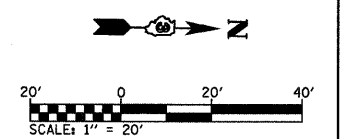
A W12-52 SIGN, WITH A W12-I101 SIGN, SHALL BE ERECTED AT THE JUNCTION OF IL 47 AND IL 113 AND AT THE JUNCTION OF I-55 AND IL 47. THE ACTUAL LOCATION OF THE SIGNS TO BE DETERMINED BY THE ENGINEER. AN ADDITIONAL W12-52 SIGN SHALL BE ERECTED 1000 FEET IN EACH DIRECTION FROM THE BRIDGE PRIOR TO STAGE 1 CONSTRUCTION. THESE SIGNS SHALL BE MAINTAINED BY THE CONTRACTOR DURING STAGE 1 CONSTRUCTION AND SHALL BE REMOVED WHEN TRAFFIC IS OPEN FOR STAGE 2.

THE ENGINEER WILL NOTIFY DISTRICT 3 BUREAU OF OPERATIONS 14 CALENDAR DAYS PRIOR TO INSTALLING ANY TRAFFIC CONTROL DEVICES THAT WILL RESTRICT THE PAVEMENT WIDTH.

THE CONTRACTOR SHALL BE RESPONSIBLE FOR COORDINATING WITH THE ENGINEER TO MEET THIS REQUIREMENT.

COST OF SUPPLYING, INSTALLING, MAINTAINING AND REMOVING WIDTH RESTRICTION SIGNS SHALL BE INCLUDED IN THE COST OF THE TRAFFIC CONTROL AND PROTECTION PAY ITEMS.

WIDTH RESTRICTION SIGNING DETAILS



FILE NAME = H:\jeff delete\26854.004.grosser\Technic	USER NAME = #USER# Production\Civil\sheets\02.dgn	DESIGNED -	REVISED -	STATE OF ILLINOIS DEPARTMENT OF TRANSPORTATION	STAGE 1 CONSTRUCTION & TRAFFIC CONTROL				F.A.P. RTE. 326	SECTION 119 BR-2	COUNTY GRUNDY	TOTAL SHEETS 52	SHEET NO. 10
PLOT SCALE = 20.0000' / IN.	CHECKED -	REVISED -	REVISED -		SCALE: 1"=20'	SHEET NO. OF	SHEETS	STA. 467+00 TO STA. 472+00	CONTRACT NO. 66688				
PLOT DATE = 8/8/2008	DATE -	REVISED -	REVISED -		FED. ROAD DIST. NO. ILLINOIS FED. AID PROJECT								