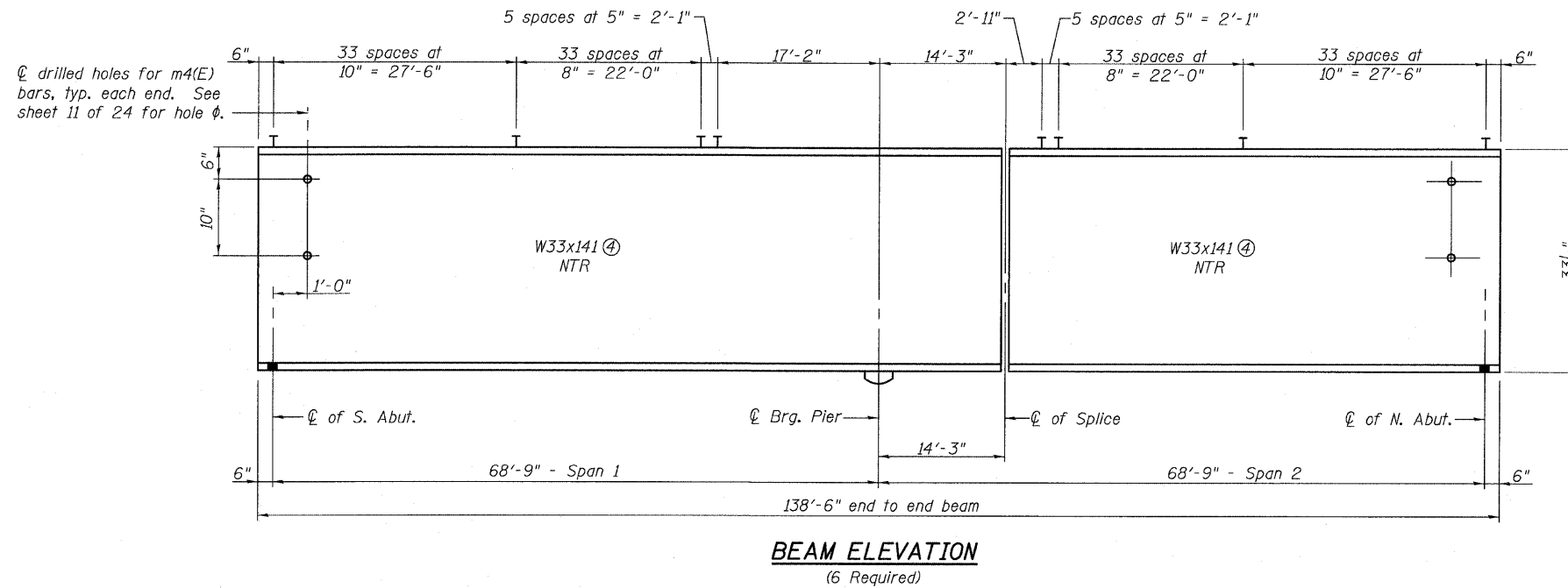


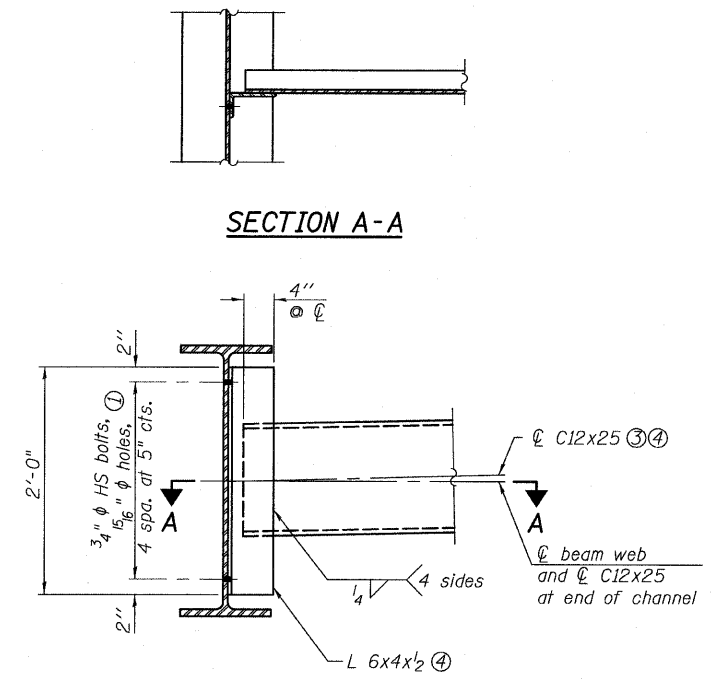
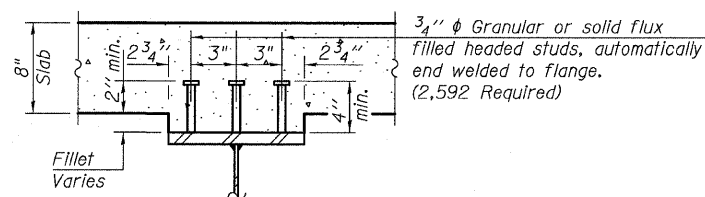
STATE OF ILLINOIS
DEPARTMENT OF TRANSPORTATION

ROUTE NO.	SECTION	COUNTY	TOTAL SHEETS	SHEET NO.	SHEET NO. 13 24 SHEETS
FAP 326	119BR-2	GRUNDY	52	29	
FED. RDWG. DIST. NO. 7	ILLINOIS	FED. AID PROJECT-	Contract #66688		



	Beam #1	Beam #2	Beam #3	Beam #4	Beam #5	Beam #6
⊘ of S. Abut.	586.66	586.81	586.93	586.93	586.81	586.66
⊘ Brg. Pier	586.74	586.89	587.00	587.00	586.89	586.74
⊘ of Splice	586.76	586.91	587.02	587.02	586.91	586.76
⊘ of N. Abut.	586.82	586.97	587.08	587.08	586.97	586.82

*For fabrication only



Notes:

- ① Use two hardened washers per bolt for all oversized holes in diaphragm connections.
- ② Load carrying components designated "NTR" shall conform to the Supplemental Requirements for Notch Toughness, Zone 2.
- ③ Alternate C12x30 channels are permitted to facilitate material acquisition. Calculated weight of structural steel is based on the lighter section. The alternate, if utilized, shall be provided at no additional cost to the Department.
- ④ AASHTO M 270 Grade 50W Steel.

BEAM & FRAMING DETAILS
IL 47 OVER WEST FORK MAZON RIVER
FAP ROUTE 326 - SECTION 119BR-2
GRUNDY COUNTY
STATION 466+07.00
STRUCTURE NO. 032-0116



Eastport Business Center 1
100 Lanter Court, Suite 1
Collinsville, Illinois 62234
618-345-2200
Design Firm License No. 184.001115